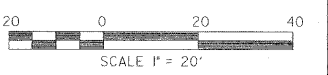


BM #1 - R.R. Spike in power pole at STA 8+21, 26.5' RT., Elev. 103.34  
BM #2 - Chiseled "X" in top of the east curb at the center of the bridge, Elev. 100.63  
BM #3 - R.R. Spike in power pole at STA 10+69.5, 26' RT., Elev. 100.09

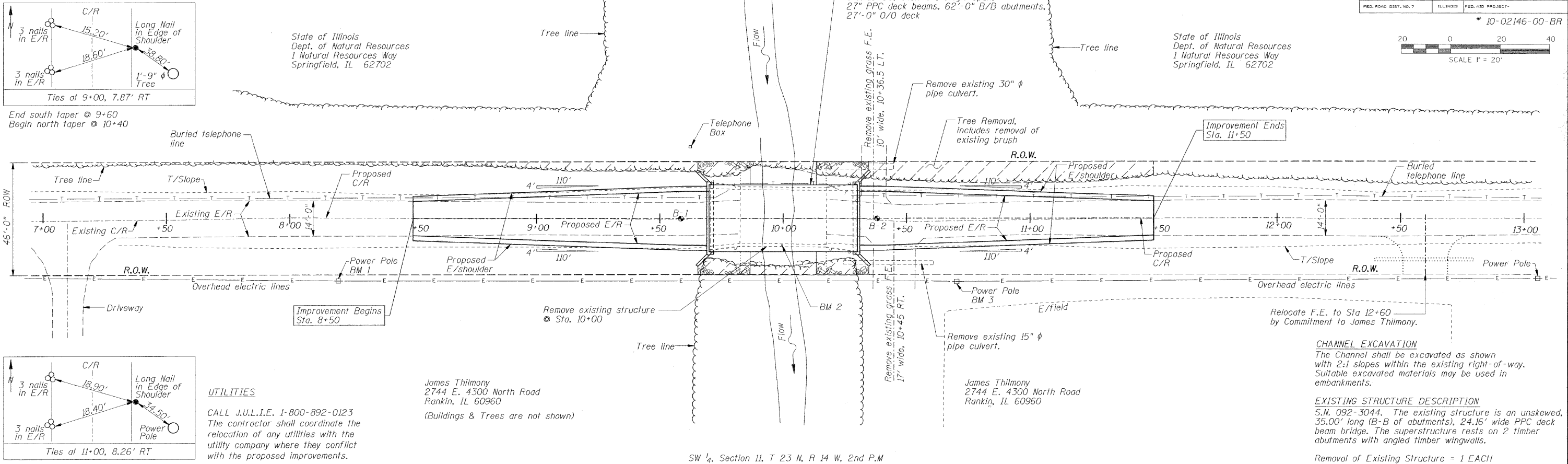
SE 1/4, Section 10, T 23 N, R 14 W, 2nd P.M.

ROUTE NO.	SECTION	COUNTY	TOTAL SHEETS	SHEET NO.
TR 16	*	Vermilion	12	3
FED. ROAD DIST. NO. 7 ILLINOIS FED. AID PROJECT-				

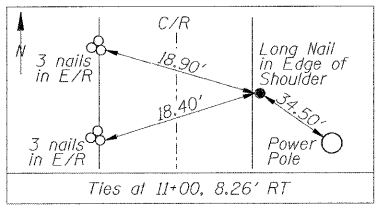
\* 10-02146-00-BR



State of Illinois  
Dept. of Natural Resources  
1 Natural Resources Way  
Springfield, IL 62702



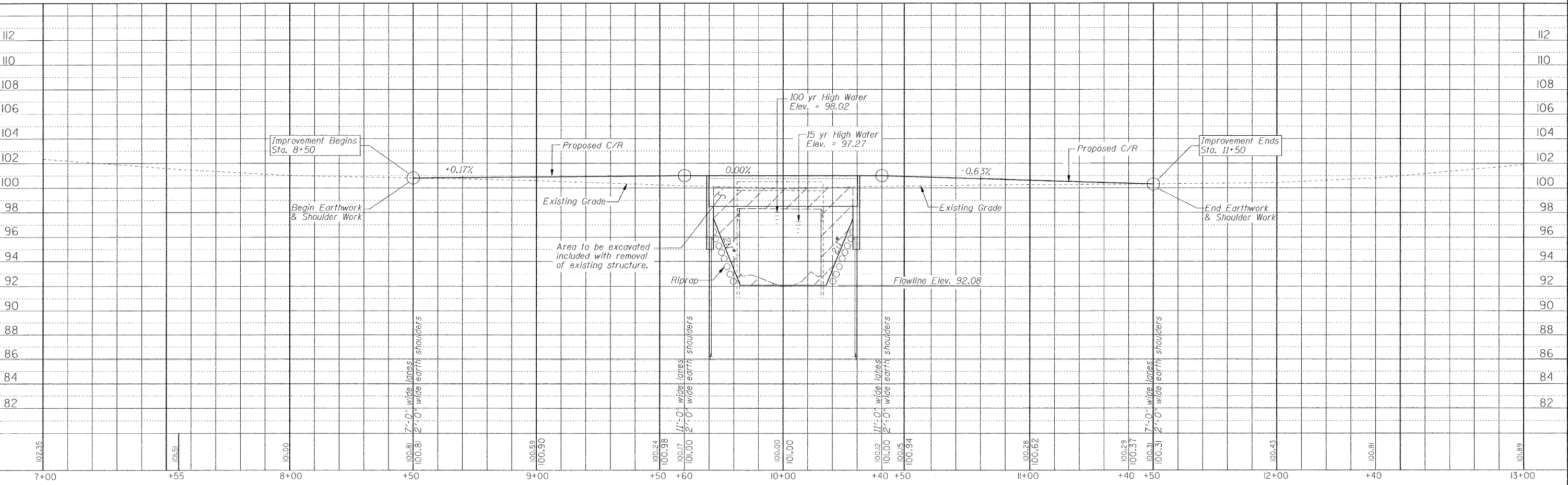
DATE	
BY	
SURVEYED	
NOTE BOOK	
ALIGNED	
CHECKED	
RT. OF WAY	
CHECKED	
PAID FILE	
NAME	
NO.	



**UTILITIES**  
CALL J.U.L.I.E. 1-800-892-0123  
The contractor shall coordinate the relocation of any utilities with the utility company where they conflict with the proposed improvements.

**James Thilmory**  
2744 E. 4300 North Road  
Rankin, IL 60960  
(Buildings & Trees are not shown)

SW 1/4, Section 11, T 23 N, R 14 W, 2nd P.M.



DATE	
BY	
SURVEYED	
NOTE BOOK	
GRADES CHECKED	
BLANK NOTED	
STRUCTURE NOTATIONS OK'D	

**FRAUENHOFFER & ASSOCIATES**  
A Division of Engineering Resources Associates, Inc.  
Consulting Engineers, Scientists, & Surveyors