

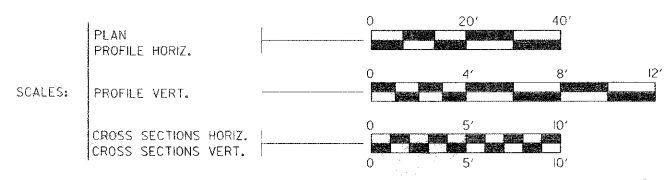
ROUTE NO.	SECTION	COUNTY	TOTAL SHEETS	SHEET NO.
TR 16	*	Vermilion	12	1

FED. ROAD DIST. NO. 7 ILLINOIS FED. AID PROJECT- *10-02146-00-BR

INDEX OF SHEETS

SHEET NO.	DESCRIPTION
1	COVER SHEET
2	SUMMARY OF QTYS & TYPICAL SECTIONS
3	PLAN & PROFILE
4	EROSION CONTROL PLAN
5-II	BRIDGE PLANS
12	CROSS SECTIONS

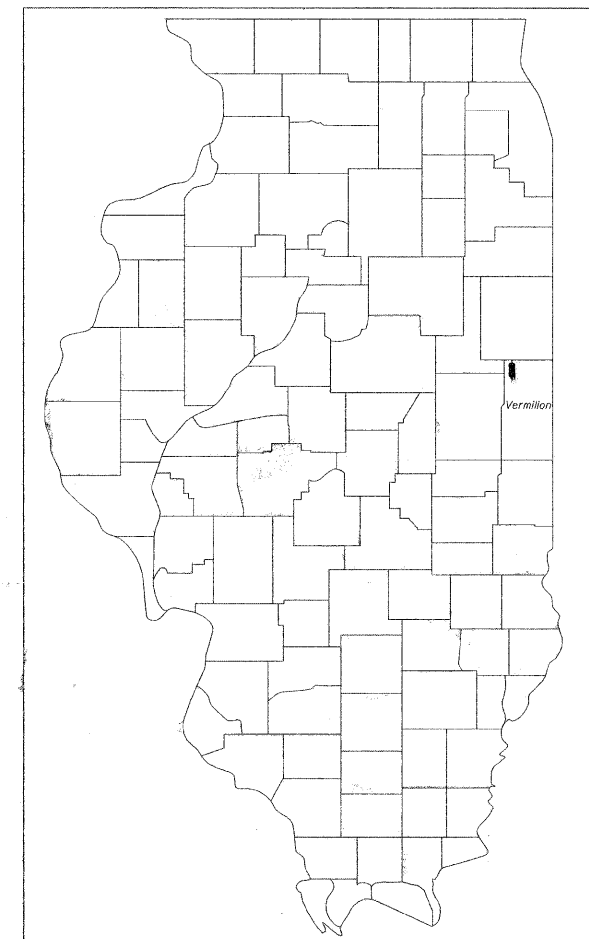
STATE OF ILLINOIS DEPARTMENT OF TRANSPORTATION PLANS FOR PROPOSED BRIDGE REPLACEMENT



VERMILION COUNTY
SECTION 10-02146-00-BR
TR 16 (170 E)
BROS-0183(313)
JOB NO. C-95-311-12

LIST OF STANDARD DRAWINGS

STANDARD NO.	DESCRIPTION
000001-06	STANDARD SYMBOLS, ABBREVIATIONS, AND PATTERNS
280001-06	TEMPORARY EROSION CONTROL SYSTEMS
515001-03	NAME PLATE FOR BRIDGES
542401-01	METAL END SECTION FOR PIPE CULVERTS
701006-03	OFF ROAD OPERATIONS, 2 L, 2 W, 15' TO 24' FROM PAVEMENT EDGE
701301-04	LANE CLOSURE, 2L, 2W SHORT TIME OPERATIONS
701901-02	TRAFFIC CONTROL DEVICES
BLR 21-9	TYPICAL APPLICATION OF TRAFFIC CONTROL DEVICES FOR CONSTRUCTION OF RURAL LOCAL HIGHWAYS



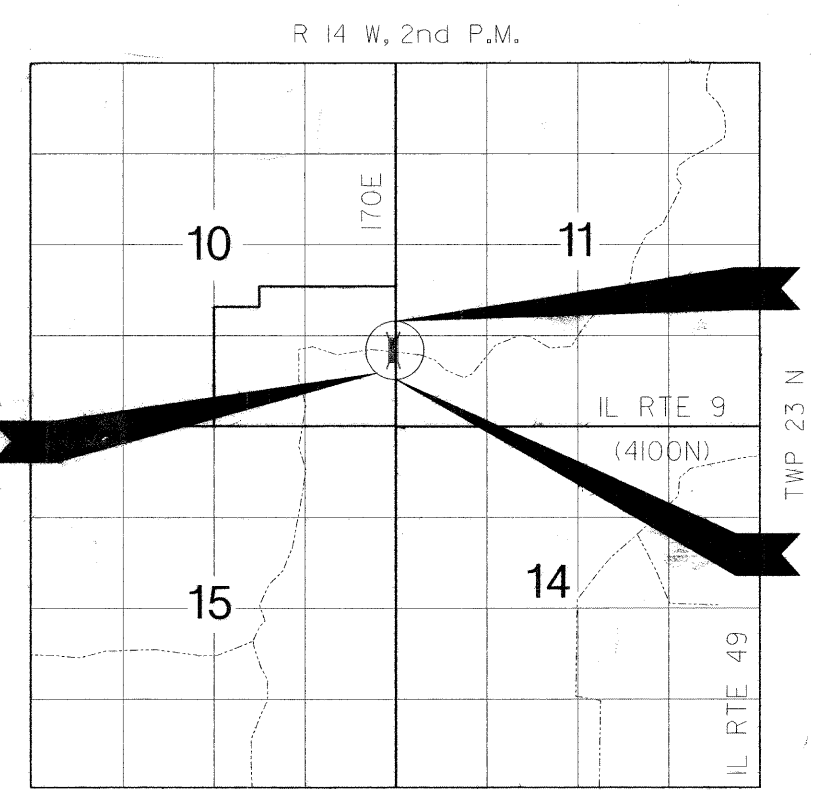
LOCATION OF SECTION INDICATED THIS:

APPROVED February 27 20 12
Mam Rumble
BUTLER TOWNSHIP ROADWAY COMMISSIONER

APPROVED February 27 20 12
Douglas R. Staska
DOUG SASKA, PE VERMILION COUNTY ENGINEER

PASSED 3/7 20 12
D.H.L.
DISTRICT FIVE ENGINEER OF LOCAL ROADS & STREETS

Releasing For Bid Based on Limited Review
James S. 20 12
DEPUTY DIRECTOR OF HIGHWAYS, REGION THREE ENGINEER
STATE OF ILLINOIS DEPARTMENT OF TRANSPORTATION



Project Ends Sta. 11+50.00

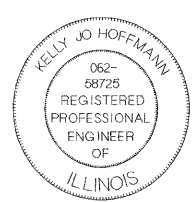
Project Begins Sta. 8+50.00

EXISTING S.N. 092-3044.
PROPOSED S.N. 092-3450

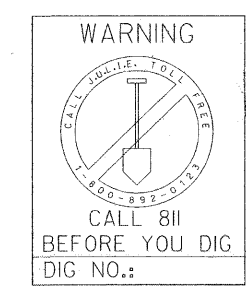
LOCATION MAP

ADT = 59 (CURRENT), 59 (DESIGN)
FUNCTIONAL CLASS = LOCAL ROAD

NET LENGTH OF SECTION = 300 FEET = 0.056 MILES



Kelly Jo Hoffmann
KELLY JO HOFFMANN
Illinois Licensed Professional Engineer Number 58725
License Expires 11/30/2013



FRAUENHOFER & ASSOCIATES
A Division of Engineering Resource Associates, Inc.
Consulting Engineers, Scientists, & Surveyors
3002 CROSSING COURT
CHAMPAIGN, IL 61822
PHONE (217) 351-6268
FAX (217) 355-1902