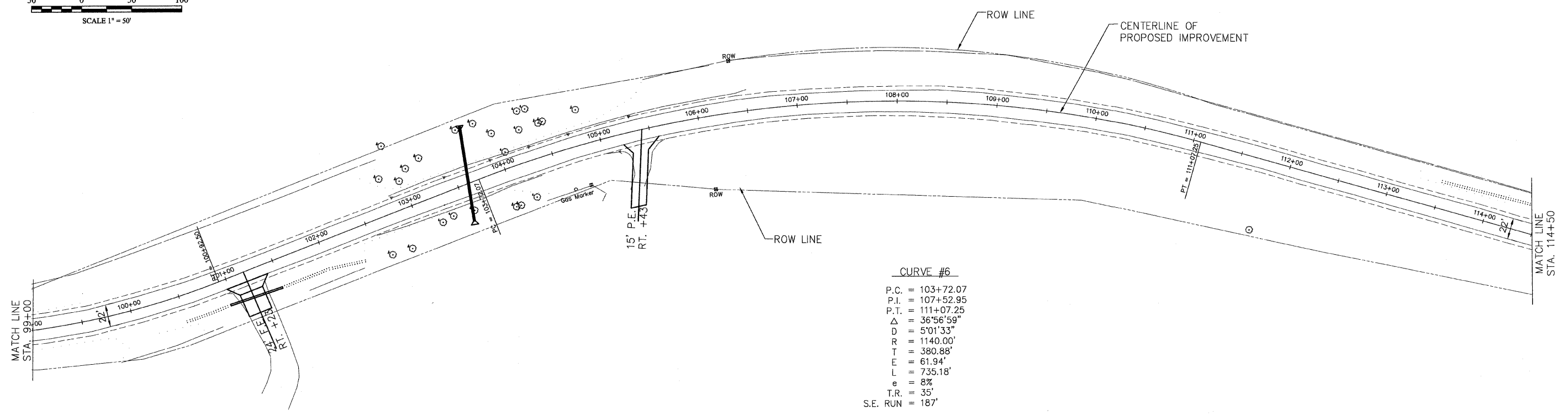
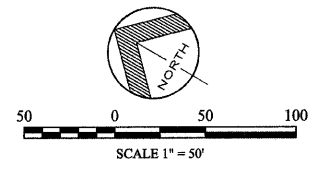


F.A.S. RTE.	SECTION	COUNTY	TOTAL SHEETS	SHEET NO.
206	04-00094-02-RS	MERCER COUNTY	18	11
STA. 99+00 TO STA. 114+50				
FED. ROAD DIST. NO. 7 ILLINOIS				



CURVE #6

P.C.	=	103+72.07
P.I.	=	107+52.95
P.T.	=	111+07.25
Δ	=	36°56'59"
D	=	5'01'33"
R	=	1140.00'
T	=	380.88'
E	=	61.94'
L	=	735.18'
e	=	8%
T.R.	=	35'
S.E. RUN	=	187'

