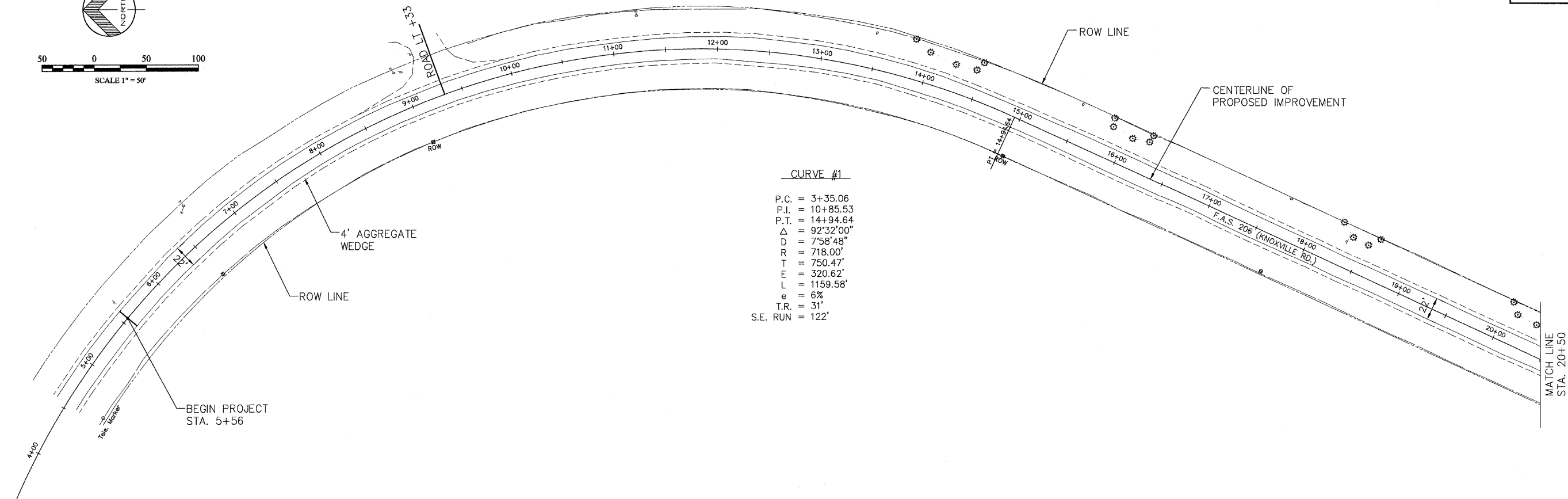
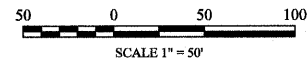
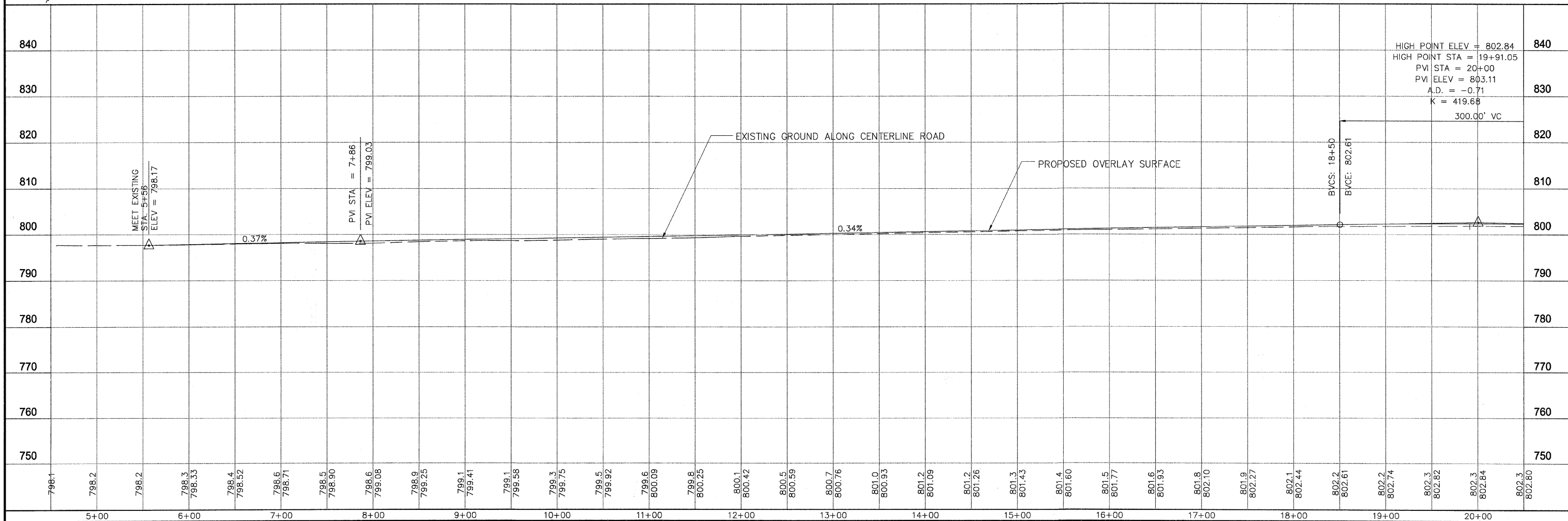


F.A.S. RTE.	SECTION	COUNTY	TOTAL SHEETS	SHEET NO.
206	04-00094-02-RS	MERCER COUNTY	18	5
STA. 5+56 TO STA. 20+50				
FED. ROAD DIST. NO. 7 ILLINOIS				



CURVE #1
 P.C. = 3+35.06
 P.I. = 10+85.53
 P.T. = 14+94.64
 $\Delta = 92^{\circ}32'00''$
 $D = 7^{\circ}58'48''$
 $R = 718.00'$
 $T = 750.47'$
 $E = 320.62'$
 $L = 1159.58'$
 $e = 6\%$
 $T.R. = 31'$
 $S.E. RUN = 122'$



HIGH POINT ELEV = 802.84
 HIGH POINT STA = 19+91.05
 PVI STA = 20+00
 PVI ELEV = 803.11
 A.D. = -0.71
 $K = 419.68$
 300.00' VC