

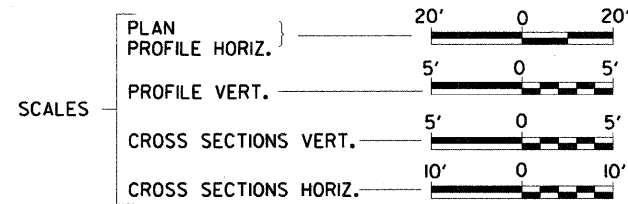
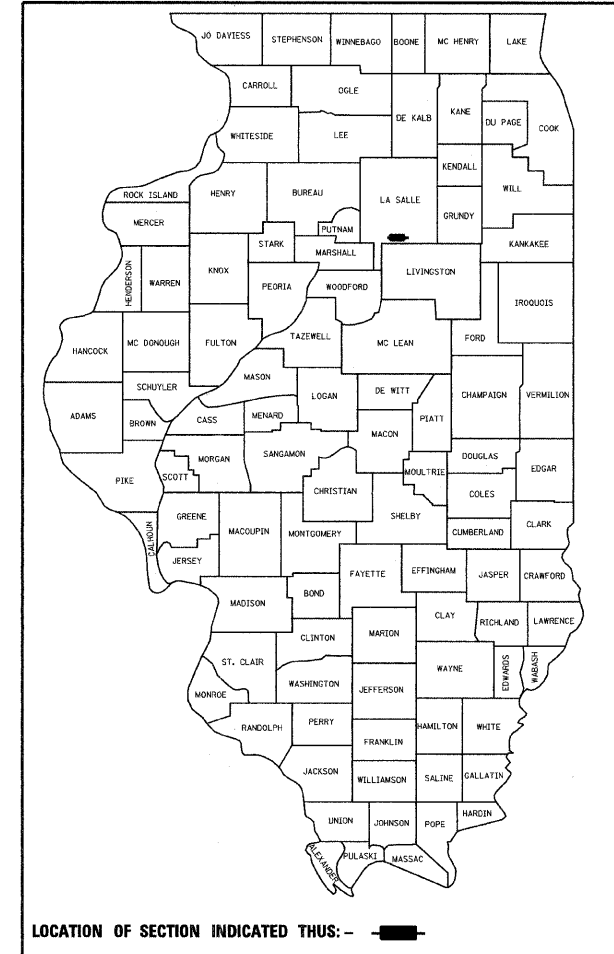
06-15-12 LETTING ITEM 052

**STATE OF ILLINOIS
DEPARTMENT OF TRANSPORTATION
PLANS FOR PROPOSED
HIGHWAY BRIDGE PROGRAM
LA SALLE COUNTY
SECTION 11-00692-00-DR
DIVISION ST. OVER
PRAIRIE CREEK IN STREATOR
PROJECT NO. BRM-5066(017)
JOB NUMBER C-93-055-12**

F.A. RTE.	SECTION	COUNTY	TOTAL SHEETS	SHEET NO.
N/A	11-00692-00-DR	LA SALLE	15	1
FED. ROAD DIST. NO. 7	ILLINOIS	CONTRACT NO. 87521		

INDEX OF SHEETS

SHEET NO.	DESCRIPTION
1	COVER SHEET
2	LIST OF STANDARDS, GENERAL NOTES AND LEGEND
3	SUMMARY OF QUANTITIES
4-5	TYPICAL SECTIONS
6	SCHEDULES OF QUANTITIES
7	PLAN & PROFILE, EROSION CONTROL & PAVEMENT MARKING PLAN
8	SPECIAL DETAILS
9-13	STRUCTURE PLANS
14-15	CROSS SECTIONS

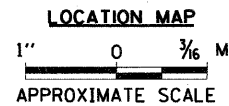
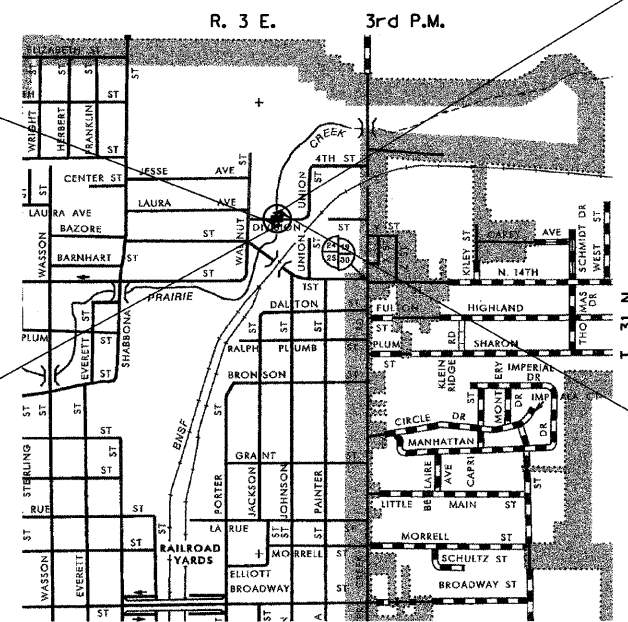


SECTION 11-00692-00-DR
BEGINS
STATION 102+55.14

EXISTING STRUCTURE NO. 050-8005
TRIPLE 15.5' X 6'-9 7/8" VARIABLE
HEIGHT CAST IN PLACE REINFORCED
BOX CULVERT,
50' IN LENGTH 32' OUT-TO-OUT

PROPOSED STRUCTURE NO. 050-8025
TRIPLE 16' X 7'-6 3/4" VARIABLE HEIGHT
CAST IN PLACE REINFORCED BOX CULVERT
WITH CANTILEVER WING WALLS,
50' IN LENGTH 29' OUT-TO-OUT

SECTION 11-00692-00-DR
ENDS
STATION 103+90.14



NET LENGTH OF PROJECT = 135.00 FEET = 0.03 MILES
DESIGN CLASSIFICATION: URBAN LOCAL STREET
DESIGN ADT = 520 (2012)
DESIGN SPEED = 30 MPH

UTILITY COMPANIES

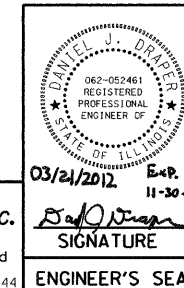
- COMED
JOLIET, ILLINOIS
- NICOR GAS
OTTAWA, ILLINOIS
- MEDIACOM
ELBURN, ILLINOIS
- FRONTIER
SYCAMORE, ILLINOIS
- ILLINOIS AMERICAN WATER CO.
STREATOR, ILLINOIS
- CITY OF STREATOR
STREATOR, ILLINOIS

J.U.L.I.E.
JOINT UTILITY LOCATION INFORMATION FOR EXCAVATION
1-800-892-0123
OR 811

CONTRACT NO. 87521

PLANS DESIGNED IN ACCORDANCE WITH BUREAU OF LOCAL ROADS AND STREETS MANUAL GUIDELINES FOR TWO LANE RURAL LOCAL ROADS - RECONSTRUCTION

APPROVED	<i>James D. Cantel</i>	2012
MAYOR, CITY OF STREATOR		
APPROVED	<i>3/28/12</i>	2012
<i>James F. Kain</i> LA SALLE COUNTY ENGINEER		
PASSED	<i>April 9, 2012</i>	2012
<i>David J. Dwyer</i> DISTRICT THREE IMPLEMENTATION ENGINEER		
Released For Bid Based on Limited Review	<i>April 9, 2012</i>	2012
<i>David J. Dwyer</i> DEPUTY DIRECTOR OF HIGHWAYS, REGION TWO ENGINEER		
STATE OF ILLINOIS DEPARTMENT OF TRANSPORTATION		



Hutchison Engineering, Inc.
Jacksonville - Since 1945 - Shorewood
2012 JOB #3044

3044C001

GENERAL NOTES

THE CONTRACTOR WILL BE REQUIRED TO COMPLY WITH ALL STATE REGULATIONS REGARDING AIR, WATER AND NOISE POLLUTION. HE WILL NOT BE ALLOWED TO BUILD FIRES ON THE SITE.

THE SCALE SHOWN ON THE DRAWINGS APPLIES ONLY TO FULL SIZE PLANS AND NOT TO THE REDUCED SIZE PLANS.

IT IS THE CONTRACTOR'S RESPONSIBILITY TO ASCERTAIN EXISTING FIELD CONDITIONS BEFORE BIDDING ON THIS PROJECT, SPECIFICALLY AS THEY RELATE TO THE LUMP SUM PAY ITEMS.

THE LOCATIONS OF KNOWN UTILITIES AS SHOWN ON THE PLANS ARE APPROXIMATE AND DOES NOT GUARANTEE THEIR ACCURACY. THE CONTRACTOR SHALL VERIFY THE LOCATION OF THESE UTILITIES AND THE EXISTENCE AND LOCATION OF ANY UTILITY NOT SHOWN ON THE PLANS.

THE CONTRACTOR SHALL NOTIFY THE UTILITIES AT LEAST TEN (10) DAYS PRIOR TO ANY CONSTRUCTION IN THE AREA AND SHALL COMPLY WITH ALL RESTRICTIONS FOR EQUIPMENT MOVEMENTS AND CLEARANCES AS REGARDS TO THEIR FACILITIES.

BEFORE STARTING ANY EXCAVATION, THE CONTRACTOR MUST CALL J.U.L.I.E. AT 1-800-892-0123 FOR FIELD LOCATIONS OF BURIED ELECTRICAL, TELEPHONE, GAS FACILITIES, AND ALL PUBLIC UTILITIES. A 48 HOUR NOTIFICATION IS REQUIRED.

THE CONTRACTOR SHALL USE ALL NECESSARY PRECAUTIONS AND PROTECTIVE MEASURES REQUIRED TO MAINTAIN EXISTING UTILITIES, SEWER AND APPURTENANCES THAT MUST BE KEPT IN OPERATION. IN PARTICULAR, THE CONTRACTOR WILL TAKE ADEQUATE MEASURES TO PREVENT THE UNDERMINING OF UTILITIES AND SEWERS WHICH ARE STILL IN SERVICE.

IT IS THE CONTRACTOR'S RESPONSIBILITY TO VERIFY ALL DIMENSIONS AND CONDITIONS EXISTING IN THE FIELD PRIOR TO CONSTRUCTION AND ORDERING MATERIALS.

THE CONTRACTOR SHALL BE REQUIRED TO PROVIDE ACCESS TO ABUTTING PROPERTIES AT ALL TIMES DURING CONSTRUCTION OF THE PROJECT.

IF ANY LOOSE MATERIAL IS DEPOSITED DURING CONSTRUCTION OPERATIONS IN THE FLOW LINE OF DITCHES, GUTTERS OR DRAINAGE STRUCTURES SO THAT IT RESTRICTS THE NATURAL FLOW OF WATER, IT SHALL BE REMOVED AT THE CLOSE OF EACH WORKING DAY. AT THE CONCLUSION OF CONSTRUCTION OPERATIONS, ALL DRAINAGE STRUCTURES SO AFFECTED SHALL BE FREE FROM ALL DEBRIS. THIS WORK SHALL BE CONSIDERED INCLUDED IN THE COST OF THIS CONTRACT.

ALL FRAMES, GRATES, SIGNS, FENCES AND DELINEATORS, NEW OR EXISTING, DAMAGED BY THE CONTRACTOR DURING CONSTRUCTION SHALL BE REPLACED BY THE CONTRACTOR AT HIS EXPENSE.

EXISTING PAVEMENT, SIDEWALK, DRIVEWAY PAVEMENT, CURB AND GUTTER AND EXISTING DRAINAGE STRUCTURES NOT INCLUDED IN THE PLANS FOR REMOVAL, BUT DAMAGED DUE TO THE CONTRACTOR'S OPERATIONS SHALL BE REPLACED AT THE EXPENSE OF THE CONTRACTOR.

TRAFFIC SIGNS REMOVED MUST BE RESET AT THEIR PERMANENT LOCATIONS IN A WORKMANLIKE MANNER AND BE VISIBLE TO TRAFFIC ON THE ROADWAY AS DIRECTED BY THE ENGINEER. THESE SIGNS SHALL BE RESET BEFORE THE ROADWAY IS OPEN TO TRAFFIC. COST OF SUCH WORK SHALL BE CONSIDERED INCLUDED IN THE COST OF THE CONTRACT.

NO WORK SHALL COMMENCE UNTIL TRAFFIC CONTROL REQUIREMENTS ARE MET.

ALL SCHOOL DISTRICTS, LOCAL POLICE DEPARTMENTS AND FIRE DEPARTMENTS SHALL BE NOTIFIED BY THE CONTRACTOR AT LEAST TEN (10) DAYS PRIOR TO THE START OF CONSTRUCTION.

WHERE SECTION OR SUB-SECTION MONUMENTS ARE ENCOUNTERED, THE ENGINEER SHALL BE NOTIFIED BEFORE SUCH MONUMENTS ARE REMOVED. THE CONTRACTOR SHALL PROTECT AND CAREFULLY PRESERVE ALL PROPERTY MARKS AND MONUMENTS UNTIL THE OWNER AND AUTHORIZED SURVEYOR OR AGENT HAS WITNESSED OR OTHERWISE REFERENCED THEIR LOCATION.

ALL EXISTING GRANULAR MATERIAL AND HOT-MIX ASPHALT MATERIALS TO BE REMOVED AND NOT PAID AS A SPECIFIC ITEM SHALL BE CONSIDERED EARTH EXCAVATION AND WILL BE PAID FOR AT THE UNIT PRICE FOR EARTH EXCAVATION. THE CONTRACTOR WILL HAVE THE OPTION OF REMOVING THE EXISTING HOT-MIX ASPHALT MATERIAL BY GRINDING OR EXCAVATING THE MATERIAL. IF THE HOT-MIX ASPHALT MATERIAL IS REMOVED BY EXCAVATION, NO SUCH MATERIAL MAY BE USED IN EMBANKMENT AREAS UNLESS SPECIFICALLY AUTHORIZED BY THE ENGINEER.

EXCAVATION FOR PLACEMENT OF RIPRAP SHALL BE INCLUDED IN THE COST OF THE RIPRAP.

ALL EMBANKMENTS AND SUB-GRADE SHALL BE COMPACTED TO THE SATISFACTION OF THE ENGINEER PRIOR TO PLACING SUB-BASE GRANULAR MATERIAL.

UTILITY POLES, PEDESTALS, MANHOLES AND FIRE HYDRANTS TO REMAIN IN PLACE SHALL NOT BE DISTURBED BY THE CONTRACTOR. FINISHING AROUND THESE POLES, PEDESTALS, MANHOLES OR HYDRANTS SHALL BE THE RESPONSIBILITY OF THE CONTRACTOR AND SHALL BE INCLUDED IN THE COST OF EARTH EXCAVATION.

THE MAXIMUM COMPACTED THICKNESS OF A LIFT OF BASE COURSE WILL BE 4" UNLESS OTHERWISE AUTHORIZED BY THE ENGINEER.

ADJUSTMENTS OF STRUCTURES MAINTAINED BY OTHER AGENCIES SHALL BE MADE TO THE SATISFACTION OF THE ENGINEER AND THE AGENCY MAINTAINING THE SYSTEM OF THE STRUCTURE INVOLVED.

ALL FIELD TILES ENCOUNTERED SHALL BE CAREFULLY PRESERVED AND CONNECTED TO PROPOSED DRAINAGE STRUCTURES, SEWERS OR DITCHES AS DIRECTED BY THE ENGINEER. THIS WORK WILL BE PAID IN ACCORDANCE WITH ARTICLE 109.04.

TREES NOT MARKED FOR REMOVAL SHALL BE CONSIDERED AS DESIGNATED TO BE SAVED AND SHALL BE PROTECTED UNDER THE PROVISIONS OF ARTICLE 201.05.

ALL CLEARING, REMOVAL OF BUSHES, HEDGES AND TREES UNDER 6" DIAMETER WILL BE INCLUDED IN THE COST OF EARTH EXCAVATION.

TOPSOIL SHALL BE PLACED AT A DEPTH OF FOUR INCHES (4").

THE CROSS SECTIONS INDICATE THE FINISHED GRADE OF TOP SOIL.

ALL CONSTRUCTION PERSONNEL WILL BE REQUIRED TO WEAR FLUORESCENT ORANGE VESTS AT ALL TIMES WHILE ON THE CONSTRUCTION SITE. COMPLIANCE WITH THIS REQUIREMENT SHALL BE CONSIDERED INCLUDED IN THE COST OF THE CONTRACT.

EXCEPT AS NOTED ON THE PLANS, PAVEMENT GRADES SHOWN ARE AT THE TOP OF PAVEMENT SURFACES.

THE ENGINEER WILL BE THE SOLE JUDGE CONCERNING CURING TIME FOR THE VARIOUS HMA LIFTS.

FOR STABILIZATION, ALL TYPE III BARRICADES SHALL REQUIRE A MINIMUM OF FOUR SAND BAGS PER BARRICADE.

SEEDING SHALL NOT BE PERMITTED AT ANY TIME WHEN THE GROUND IS FROZEN, WET, OR IN AN UNTILLABLE CONDITION. LOCATIONS TO BE SEEDED WILL BE DETERMINED BY THE ENGINEER.

ALL ELEVATIONS REFER TO U.S.G.S. MEAN SEA LEVEL DATUM.

ABANDONED UNDERGROUND UTILITIES THAT CONFLICT WITH CONSTRUCTION SHALL BE DISPOSED OF OUTSIDE THE LIMITS OF THE RIGHT OF WAY ACCORDING TO ARTICLE 202.03 OF THE STANDARD SPECIFICATIONS AND AS DIRECTED BY THE ENGINEER. THIS WORK WILL NOT BE PAID FOR SEPARATELY, BUT SHALL BE INCLUDED IN THE COST OF EARTH EXCAVATION.

ANY REFERENCE TO A STANDARD IN THESE PLANS SHALL BE INTERPRETED TO MEAN THE EDITION AS INDICATED BY THE SUBNUMBER SHOWN IN THE LIST OF STANDARDS OR THE COPY INCLUDED IN THESE PLANS.

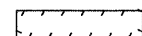
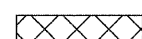
THE FOLLOWING RATES OF APPLICATION HAVE BEEN ASSUMED IN CALCULATING PLAN QUANTITIES:

GRANULAR MATERIALS	2.05 TONS/CU YD	
BITUMINOUS MATERIALS PRIME COAT	0.08 GAL/SQ YD OR	
	0.375 GAL/SQ YD	
AGGREGATE PRIME COAT	0.002 TONS/SQ YD	
HOT-MIX ASPHALT SURFACE COURSE	112 LBS/SQ YD/INCH	
HOT-MIX ASPHALT BINDER COURSE	115 LBS/SQ YD/INCH	
LEVELING BINDER (MACHINE METHOD)	112 LBS/SQ YD/INCH	
NITROGEN FERTILIZER NUTRIENT	60 LBS/ACRE (SODDING)	90 LBS/ACRE (SEEDING)
PHOSPHORUS FERTILIZER NUTRIENT	60 LBS/ACRE (SODDING)	90 LBS/ACRE (SEEDING)
POTASSIUM FERTILIZER NUTRIENT	60 LBS/ACRE (SODDING)	90 LBS/ACRE (SEEDING)

LIST OF STANDARDS

000001-06	STANDARD SYMBOLS, ABBREVIATIONS AND PATTERNS
001001-02	AREAS OF REINFORCEMENT BARS
280001-06	TEMPORARY EROSION CONTROL SYSTEMS
515001-03	NAME PLATE FOR BRIDGES
606001-04	CONCRETE CURB TYPE B AND COMBINATION CONCRETE CURB AND GUTTER
602401-03	MANHOLE, TYPE A
602701-02	MANHOLE STEPS
630001-10	STEEL PLATE BEAM GUARDRAIL
630301-05	SHOULDER WIDENING FOR TYPE 1 (SPECIAL) GUARDRAIL TERMINALS
631032-07	TRAFFIC BARRIER TERMINAL, TYPE 6A
635006-03	REFLECTOR AND TERMINAL MARKER PLACEMENT
635011-02	REFLECTOR MARKER AND MOUNTING DETAILS
701501-06	URBAN LANE CLOSURE, 2L, 2W, UNDIVIDED
701901-02	TRAFFIC CONTROL DEVICES
780001-03	TYPICAL PAVEMENT MARKINGS
B.L.R. 21-9	TYPICAL APPLICATION OF TRAFFIC CONTROL DEVICES FOR CONSTRUCTION ON RURAL LOCAL HIGHWAYS
B.L.R. 22-7	TYPICAL APPLICATION OF TRAFFIC CONTROL DEVICES FOR CONSTRUCTION ON RURAL LOCAL HIGHWAYS (TWO-LANE TWO-WAY RURAL TRAFFIC) (ROAD CLOSED TO THRU TRAFFIC)

LEGEND

	PCC SIDEWALK, CURB, CURB & GUTTER REMOVAL
	HOT-MIX ASPHALT SURFACE REMOVAL

FILE NAME = v:\3044\3044g001.dgn	USER NAME = bdcraene	DESIGNED -	REVISED -	STATE OF ILLINOIS DEPARTMENT OF TRANSPORTATION	DIVISION ST. LIST OF STANDARDS, GENERAL NOTES AND LEGEND			F.A. RTE.	SECTION	COUNTY	TOTAL SHEETS	SHEET NO.	
		DRAWN -	REVISED -		SCALE: N/A	SHEET NO. 1 OF 1 SHEETS	STA. N/A	TO STA. N/A	N/A	11-00692-00-DR	LA SALLE	15	2
		CHECKED -	REVISED -		CONTRACT NO. 87521								
		DATE -	REVISED -		FED. ROAD DIST. NO. 7 (ILLINOIS) FED. AID PROJECT BRM-5066(017)								

SUMMARY OF QUANTITIES

ITEM NO.	SPECIALTY ITEM &/OR SPECIAL PROVISION	CODE NO.	DESCRIPTION	UNIT	TOTAL QUANTITY	CONSTRUCTION TYPE CODE		ITEM NO.	SPECIALTY ITEM &/OR SPECIAL PROVISION	CODE NO.	DESCRIPTION	UNIT	TOTAL QUANTITY	CONSTRUCTION TYPE CODE	
						ROADWAY 0004	STRUCTURE 0011							ROADWAY 0004	STRUCTURE 0011
1		20100210	TREE REMOVAL (OVER 15 UNITS DIAMETER)	UNIT	48		48	41	RSP	Z0013798	CONSTRUCTION LAYOUT	L SUM	1		1
2		20200100	EARTH EXCAVATION	CU YD	97	97		42	SP, SI	Z0059700	SANITARY SEWER, TYPE 2 10"	FOOT	80		80
3		20201200	REMOVAL AND DISPOSAL OF UNSUITABLE MATERIAL	CU YD	57		57	43	SP, SI	XX006199	STEEL BRIDGE RAIL, TYPE SM (SPECIAL)	FOOT	102		102
4		20700220	POROUS GRANULAR EMBANKMENT	CU YD	140		140								
5		21101615	TOPSOIL FURNISH AND PLACE, 4"	SQ YD	166	166									
6		25000210	SEEDING, CLASS 2A	ACRE	0.04	0.04									
7		25000400	NITROGEN FERTILIZER NUTRIENT	POUND	4	4									
8		25000500	PHOSPHORUS FERTILIZER NUTRIENT	POUND	4	4									
9		25000600	POTASSIUM FERTILIZER NUTRIENT	POUND	4	4									
10		25100115	MULCH, METHOD 2	ACRE	0.08	0.08									
11		25100630	EROSION CONTROL BLANKET	SQ YD	166	166									
12	BDE	28000250	TEMPORARY EROSION CONTROL SEEDING	POUND	16	16									
13		28000305	TEMPORARY DITCH CHECKS	FOOT	24	24									
14		28000400	PERIMETER EROSION BARRIER	FOOT	301	301									
15		28100109	STONE RIPRAP, CLASS A5	SQ YD	118		118								
16		28200200	FILTER FABRIC	SQ YD	118		118								
17	SP	30300112	AGGREGATE SUBGRADE IMPROVEMENT 12"	SQ YD	124	124									
18		40600100	BITUMINOUS MATERIALS (PRIME COAT)	GALLON	55	55									
19	BDE	40603080	HOT-MIX ASPHALT BINDER COURSE, IL-19.0, N50	TON	28	28									
20	BDE	40603310	HOT-MIX ASPHALT SURFACE COURSE, MIX "C", N50	TON	14	14									
21		42001300	PROTECTIVE COAT	SQ YD	20	20									
22		44000100	PAVEMENT REMOVAL	SQ YD	124	124									
23		44000157	HOT-MIX ASPHALT SURFACE REMOVAL, 2"	SQ YD	108	108									
24		44000500	COMBINATION CURB AND GUTTER REMOVAL	FOOT	88	88									
25	SP	50100100	REMOVAL OF EXISTING STRUCTURES	EACH	1		1								
26		50300300	PROTECTIVE COAT	SQ YD	172		172								
27		50800205	REINFORCEMENT BARS, EPOXY COATED	POUND	32400		32400								
28		51500100	NAME PLATES	EACH	1		1								
29		54003000	CONCRETE BOX CULVERTS	CU YD	193.3		193.3								
30		60604400	COMBINATION CONCRETE CURB AND GUTTER, TYPE B-6.18	FOOT	88	88									
31	SI	63100087	TRAFFIC BARRIER TERMINAL, TYPE 6A	EACH	2	2									
32	SI	63100167	TRAFFIC BARRIER TERMINAL, TYPE 1 (SPECIAL) TANGENT	EACH	2	2									
33		67100100	MOBILIZATION	L SUM	1		1								
34	SI	78000200	THERMOPLASTIC PAVEMENT MARKING - LINE 4"	FOOT	34	34									
35	RSP, SI	78200410	GUARDRAIL MARKERS, TYPE A	EACH	8	8									
36	SI	78201000	TERMINAL MARKER - DIRECT APPLIED	EACH	2	2									
37	SP	X0325323	MANHOLES, TYPE A, SANITARY, 4'-DIAMETER, TYPE 1 FRAME, CLOSED LID	EACH	1	1									
38	SP, SI	X0487700	SANITARY SEWER REMOVAL 10"	FOOT	80	80									
39	SP, SI	X6026054	SANITARY MANHOLES TO BE REMOVED	EACH	1	1									
40	SP	X7010216	TRAFFIC CONTROL AND PROTECTION, (SPECIAL)	L SUM	1	1									

SP=SPECIAL PROVISION RSP=RECURRING SPECIAL PROVISIONS SI=SPECIALITY ITEM BDE=BUREAU OF DESIGN AND ENVIRONMENT

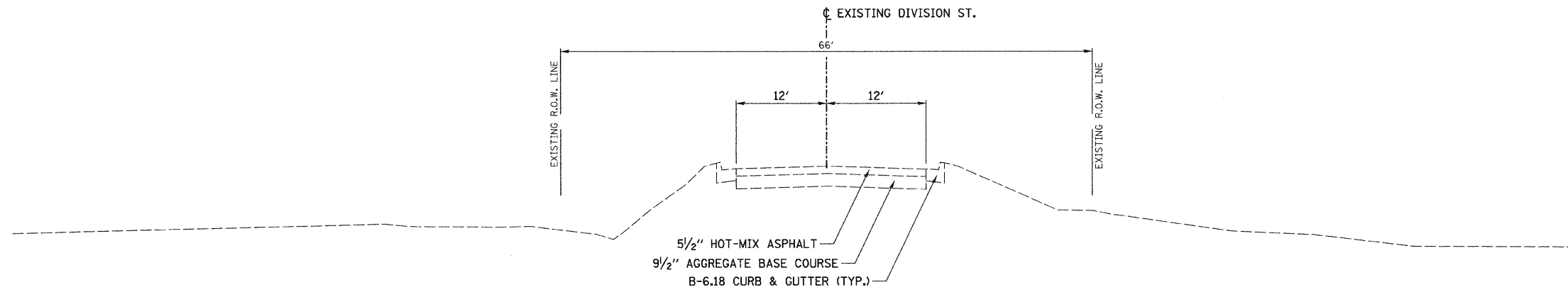
FILE NAME = V:\3044\3044q001.dgn

USER NAME = bdeoraene	DESIGNED -	REVISED -
PLOT SCALE = 1.000' / IN.	DRAWN -	REVISED -
PLOT DATE = 3/27/2012	CHECKED -	REVISED -
	DATE -	REVISED -

STATE OF ILLINOIS
DEPARTMENT OF TRANSPORTATION

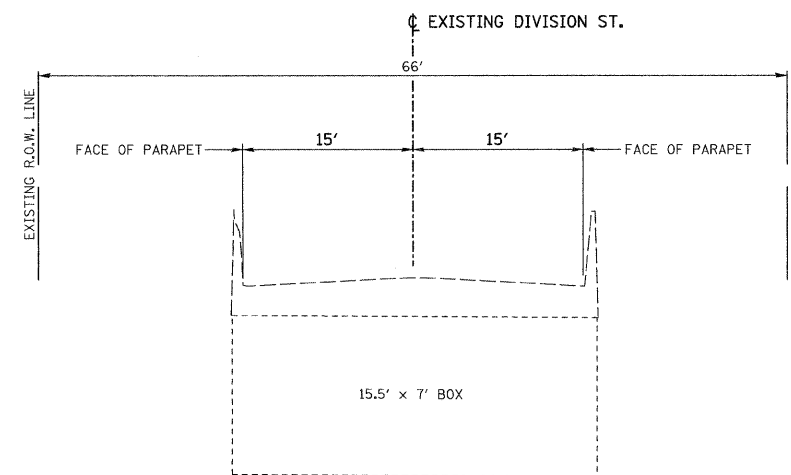
DIVISION ST. SUMMARY OF QUANTITIES			
SCALE: N/A	SHEET NO. 1 OF 1 SHEETS	STA. N/A	TO STA. N/A

F.A. RTE.	SECTION	COUNTY	TOTAL SHEETS	SHEET NO.
N/A	11-00692-00-DR	LA SALLE	15	3
FED. ROAD DIST. NO. 7 [ILLINOIS] FED. AID PROJECT BRM-5066(017)			CONTRACT NO. 87521	



**EXISTING TYPICAL SECTION
DIVISION ST.**

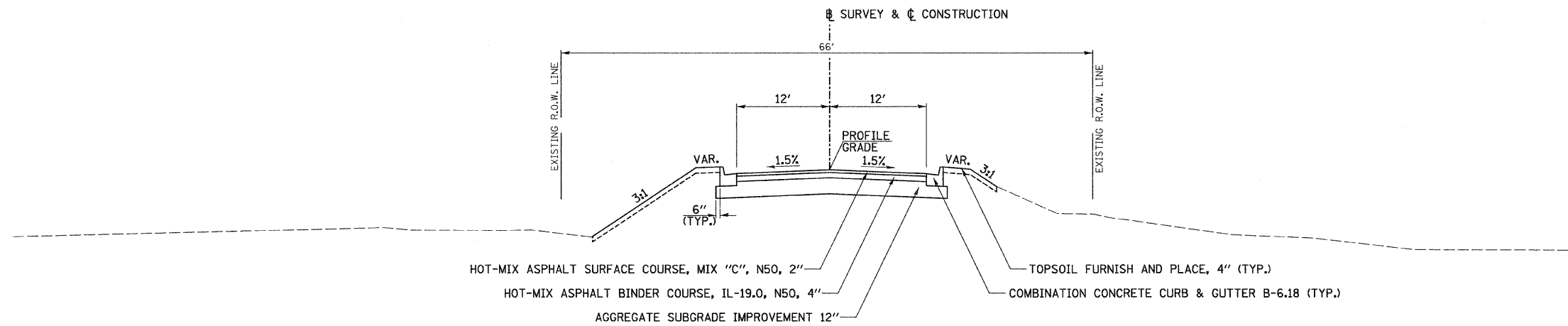
STA. 102+55.14 TO STA. 102+96.27
STA. 103+46.53 TO STA. 103+90.14



**EXISTING STRUCTURE TYPICAL SECTION
DIVISION ST.**

STA. 102+96.27 TO STA. 103+46.53

FILE NAME = v:\3044\3044+001.dgn	USER NAME = bdeoraene	DESIGNED -	REVISED -	STATE OF ILLINOIS DEPARTMENT OF TRANSPORTATION	DIVISION ST. EXISTING TYPICAL SECTIONS		F.A. RTE.	SECTION	COUNTY	TOTAL SHEETS	SHEET NO.
	PLOT SCALE = 8,000' / IN.	DRAWN -	REVISED -				N/A	11-00692-00-DR	LA SALLE	15	4
	PLOT DATE = 3/21/2012	CHECKED -	REVISED -		SCALE: N/A	SHEET NO. 1 OF 2 SHEETS	STA. N/A	TO STA. N/A	CONTRACT NO. 87521		FED. ROAD DIST. NO. 7 (ILLINOIS)



**PROPOSED TYPICAL SECTION
DIVISION ST.**

STA. 102+55.14 TO STA. 102+96.24
STA. 103+46.87 TO STA. 103+90.14

DIVISION ST. STRUCTURAL PAVEMENT DESIGN	
STRUCTURAL DESIGN TRAFFIC (S.D.T.) YEAR 2012	
PV = 458	SU = 37 MU = 26
CLASS III ROAD	
SUB-GRADE SUPPORT RATING: POOR	
PERCENT OF S.D.T. IN DESIGN LANE: 50%	
TRAFFIC FACTOR = 0.14	
PAVEMENT STRUCTURE MATERIALS RECONSTRUCTION:	
SURFACE COURSE TYPE:	HOT-MIX ASPHALT SURFACE COURSE, MIX "C", N50, 2"
BASE COURSE TYPE:	HOT-MIX ASPHALT BINDER COURSE, IL-19.0, N50, 4"
SUB-BASE TYPE:	AGGREGATE SUBGRADE IMPROVEMENT 12"

LOCATION: DIVISION ST.			
	HOT-MIX ASPHALT BINDER	HOT-MIX ASPHALT LEVELING BINDER	HOT-MIX ASPHALT SURFACE
PG GRADE	PG64-22	PG64-22	PG64-22
DESIGN AIR VOIDS	4% @ N50	4% @ N50	4% @ N50
MIXTURE COMPOSITION	IL-19.0	IL-9.5	IL-9.5
FRICTION AGGREGATE	N/A	N/A	MIX "C"
DENSITY TEST METHOD	CORES	SATISFACTION OF ENGINEER	CORES

THE UNIT WEIGHT USED TO CALCULATE ALL HOT-MIX ASPHALT SURFACE MIXTURE IS 112 LBS/SQ YD/IN.

(SEE STRUCTURE PLANS FOR TYPICAL SECTION.)

**PROPOSED STRUCTURE TYPICAL SECTION
DIVISION ST.**

STA. 102+96.24 TO STA. 103+46.87

FILE NAME = v:\3844\3844\802.dgn	USER NAME = bdeoraene	DESIGNED -	REVISIONS -	STATE OF ILLINOIS DEPARTMENT OF TRANSPORTATION	DIVISION ST. PROPOSED TYPICAL SECTIONS	F.A. RTE.	SECTION	COUNTY	TOTAL SHEETS	SHEET NO.		
		DRAWN -	REVISIONS -			N/A	11-00692-00-DR	LA SALLE	15	5		
		CHECKED -	REVISIONS -			SCALE: N/A		SHEET NO. 2 OF 2 SHEETS		STA. N/A	TO STA. N/A	FED. ROAD DIST. NO. 7 (ILLINOIS)
		DATE -	REVISIONS -					FED. AID PROJECT BRM-5066(017)				

TREE REMOVAL			
LOCATION			OVER 15 UNITS DIAMETER
STATION	OFFSET	SIDE	
102+72.9	18.1	LT	16
102+72.9	18.1	LT	16
102+72.9	18.1	LT	16
TOTAL			48

PERIMETER EROSION BARRIER				
STATION	TO	STATION	SIDE	LENGTH FOOT
102+00.82	TO	103+08.72	RT	117
102+53.63	TO	102+75.00	LT	29
103+42.64	TO	103+83.23	RT	48
103+42.87	TO	104+42.34	LT	107
TOTAL				301
PERIMETER EROSION BARRIER IS SILT FENCE.				

PAVEMENT								
LOCATION			BITUMINOUS MATERIALS (PRIME COAT) (0.08 GAL/SY)	BITUMINOUS MATERIALS (PRIME COAT) (0.375 GAL/SY)	HOT-MIX ASPHALT BINDER COURSE, IL-19.0, N50	HOT-MIX ASPHALT SURFACE COURSE, MIX "C", N50	AGGREGATE SUBGRADE IMPROVEMENT, 12"	HOT-MIX ASPHALT SURFACE REMOVAL, 2"
STATION	TO	STATION	GALLON	GALLON	TON	TON	SQ YD	SQ YD
102+55.14	TO	102+96.24	5	22	13	7	59	54
103+46.87	TO	103+90.14	5	23	15	7	65	54
TOTAL			10	45	28	14	124	108

EARTHWORK						
1		2		3	4	5
STATION	TO	STATION	EARTH EXCAVATION	EARTH EXCAVATION TO BE USED IN EMBANKMENT ADJUSTED FOR SHRINKAGE	EMBANKMENT	EARTHWORK BALANCE WASTE(+) OR SHORTAGE(-)
CU YD						
102+75.0	TO	102+96.2	25.1	18.8	6.1	12.7
103+46.9	TO	103+70.1	71.4	53.6	0.0	53.6
TOTAL			97	72	6	66
SHRINKAGE FACTORS: 0.25%						
EARTH EXCAVATION:						
COLUMN 1, 2, 3, & 4 - LOCATION AND QUANTITIES FROM CROSS SECTIONS.						
CUT = EARTH EXCAVATION AND FILL = EMBANKMENT						
COLUMN 3 = COLUMN 2 x (1 - EARTH EXCAVATION SHRINKAGE FACTOR)						
COLUMN 5 = COLUMN 3 - COLUMN 4						
PAY ITEM:						
COLUMN 2 IS EARTH EXCAVATION = 97 CU YD						

PAVEMENT REMOVAL			
LOCATION		AREA	
STATION	TO	SQ YD	
102+72.75	TO	102+96.27	59
103+46.53	TO	103+70.46	65
TOTAL		124	
WHERE IT IS REQUIRED TO REMOVE ANY OR ALL OF THE EXISTING SUB-BASE IT IS TO BE CONSIDERED INCLUDED IN THE COST OF THE PAVEMENT REMOVAL.			

COMBINATION CURB & GUTTER REMOVAL				
LOCATION		SIDE	FOOT	
STATION +/-	TO	STATION +/-		
102+75.14	TO	102+96.21	21	
102+75.14	TO	102+96.21	21	
103+46.87	TO	103+70.14	23	
103+46.87	TO	103+70.14	23	
TOTAL			88	

TOPSOIL, SEEDING, MULCH & NUTRIENTS										
STATION +/-		TO	STATION +/-	SIDE	TOPSOIL FURNISH AND PLACE, 4"	SEEDING, CLASS 2A	MULCH, METHOD 2	NITROGEN FERTILIZER NUTRIENT	PHOSPHORUS FERTILIZER NUTRIENT	POTASSIUM FERTILIZER NUTRIENT
					SQ YD	ACRE	ACRE	POUND	POUND	POUND
102+01.0	TO	102+96.0	RT	60	0.01	0.01	0.9	0.9	0.9	
102+54.0	TO	102+96.0	LT	50	0.01	0.01	0.9	0.9	0.9	
102+54.0	TO	102+96.0	RT	18	0.01	0.01	0.9	0.9	0.9	
103+47.0	TO	104+42.0	LT	38	0.01	0.01	0.9	0.9	0.9	
TOTAL					166	0.04	0.04	4	4	4
FERTILIZER NUTRIENTS ARE FIGURED AT THE RATE OF APPLICATION OF 90 POUNDS/ACRE.										

COMBINATION CONCRETE CURB AND GUTTER				
LOCATION		SIDE	TYPE B-6.18 FOOT	PROTECTIVE COAT SQ YD
102+75.14	TO	102+96.21	LT	4.9
102+75.14	TO	102+96.21	RT	4.9
103+46.87	TO	103+70.14	LT	5.3
103+46.87	TO	103+70.14	RT	5.3
TOTAL				20
*SEE SPECIAL PROVISIONS AND SPECIAL DETAILS.				

STEEL PLATE BEAM GUARDRAIL					
LOCATION	TRAFFIC BARRIER TERMINAL TYPE 1 (SPECIAL) TANGENT	TRAFFIC BARRIER TERMINAL, TYPE 6A	TERMINAL MARKER DIRECT APPLIED	GUARDRAIL MARKERS, TYPE A	
EACH					
SOUTHWEST SIDE	1	1	1	4	
NORTHEAST SIDE	1	1	1	4	
TOTAL					8

EROSION CONTROL BLANKET						
LOCATION		LENGTH	WIDTH	AREA		
STATION +/-	TO	STATION +/-	SIDE	SQ YD		
102+01	TO	102+96	RT	60		
102+54	TO	102+96	LT	50		
103+47	TO	103+70	RT	18		
103+47	TO	104+42	LT	38		
TOTAL				166		

SANITARY MANHOLES TO BE REMOVED		
STATION	SIDE	EACH
103+50.0	LT	1
TOTAL		1

THERMOPLASTIC PAVEMENT MARKING			
LOCATION			LINE
STATION	TO	STATION	4" SKIP DASH
			CENTERLINE FOOT
102+55.14	TO	103+90.14	34
TOTAL			34

SANITARY SEWER REMOVAL 10"							
STATION	OFFSET (FT)	SIDE	TO	STATION	OFFSET (FT)	SIDE	LENGTH FOOT
102+80.90	7.5	LT	TO	103+60.87	9.1	LT	80
TOTAL							80

TEMPORARY EROSION CONTROL SEEDING									
STATION +/-		TO	STATION +/-	SIDE	ACRES	POUNDS PER APPLICATION PER ACRE	NUMBER OF APPLICATIONS	TOTAL POUND	MULCH, METHOD 2 ACRE
102+01.0	TO	102+96.0	RT	0.01	100.0	4	4	0.01	
102+54.0	TO	102+96.0	LT	0.01	100.0	4	4	0.01	
102+54.0	TO	102+96.0	RT	0.01	100.0	4	4	0.01	
103+47.0	TO	104+42.0	LT	0.01	100.0	4	4	0.01	
TOTAL								16	0.04
MULCH METHOD 2 IS USED FOR TEMPORARY MULCHING, ONLY ONE APPLICATION OF MULCHING HAS BEEN INCLUDED. SEEDING CLASS 7 WILL BE USED FOR TEMPORARY EROSION CONTROL SEEDING.									

SANITARY SEWER & MANHOLES									
STATION	OFFSET (FT)	SIDE	TO	STATION	OFFSET (FT)	SIDE	SANITARY SEWER, TYPE 2 10"	MANHOLES, TY A, SANITARY, 4'-DIA, TYPE 1 FRAME, CLOSED LID	
							FOOT	EACH	
102+80.90	7.5	LT	TO	103+61.87	9.1	LT	80		
103+61.87	9.1	LT						1	
TOTAL							80	1	

TEMPORARY DITCH CHECKS		
STATION	SIDE	FOOT
102+75.0	LT	24
TOTAL		24

FILE NAME = V:\3844\3844q002.dgn

USER NAME = bdecrone
 PLOT SCALE = 1:800 @ 1/4" IN.
 PLOT DATE = 3/21/2012

DESIGNED -
 DRAWN -
 CHECKED -
 DATE -

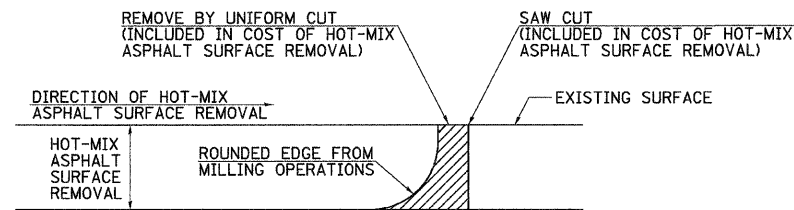
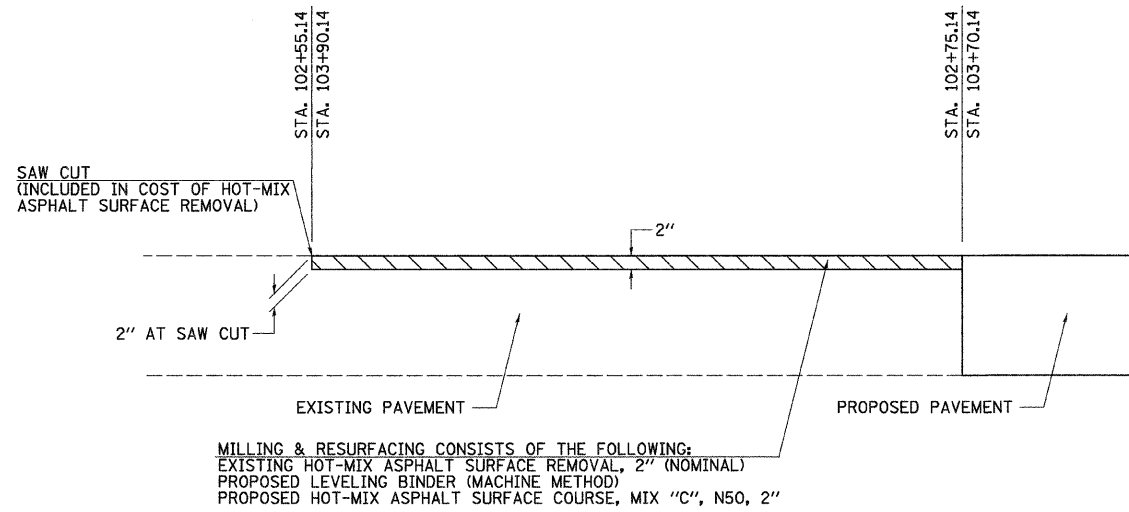
REVISED -
 REVISED -
 REVISED -
 REVISED -

STATE OF ILLINOIS
 DEPARTMENT OF TRANSPORTATION

DIVISION ST.
 SCHEDULES OF QUANTITIES

SCALE: N/A SHEET NO. 1 OF 1 SHEETS STA. N/A TO STA. N/A

F.A. RTE. SECTION COUNTY TOTAL SHEETS SHEET NO.
 N/A 11-00692-00-DR LA SALLE 15 6
 CONTRACT NO. 87521
 FED. ROAD DIST. NO. 7 [ILLINOIS] FED. AID PROJECT BRM-5066(017)



NOTE: WHEN MILLING OPERATIONS PRODUCE A ROUNDED EDGE, THEN A SAW CUT SHALL BE USED TO MANUFACTURE A PERPENDICULAR EDGE AS SHOWN IN THE DETAIL. THE ENGINEER SHALL BE THE SOLE JUDGE CONCERNING THE USE OF THIS DETAIL.

HOT-MIX ASPHALT SURFACE REMOVAL DETAILS

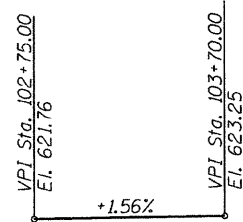
FILE NAME = v:\3844\3844h001.dgn	USER NAME = bdecaene	DESIGNED -	REVISED -	STATE OF ILLINOIS DEPARTMENT OF TRANSPORTATION	DIVISION ST. SPECIAL DETAILS		F.A. RTE.	SECTION	COUNTY	TOTAL SHEETS	SHEET NO.
		DRAWN -	REVISED -				N/A	11-00692-00-DR	LA SALLE	15	8
		CHECKED -	REVISED -		SCALE: N/A	SHEET NO. 1 OF 1 SHEETS	STA. N/A	TO STA. N/A	FED. ROAD DIST. NO. 7 [ILLINOIS] FED. AID PROJECT BRM-5066017)		
		DATE -	REVISED -		CONTRACT NO. 87521						

B.M.: RR Spike in PP Sta. 99+84, 20' Rt. Elev. 626.51
 B.M.: RR Spike in PP Sta. 104+50, 16' Rt. Elev. 623.87
 B.M.: Chiseled "X" S.W. bolt of F.H. Sta. 106+94, 23' Rt. Elev. 629.31

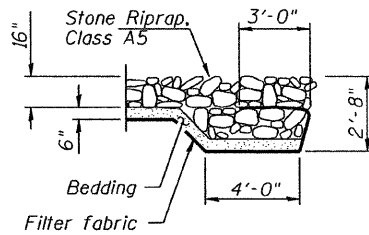
Existing Structure:
 Triple 15.5'x7' (varying) reinforced concrete box culvert.
 The structure is 31'-8" out to out, and is not skewed.
 Str. No. 050-8005

Salvage: None

Road to be closed to traffic during construction.



PROPOSED PROFILE GRADE



SECTION A-A

**PRAIRIE CREEK
 BUILT 201 BY
 LASALLE COUNTY
 SEC. 11-00692-00-DR
 STATION 103+21.54
 STR. NO. 050-8025 LOADING HL-93**

NAME PLATE

Locate Name Plate at South Headwall
 S.W. Corner of Culvert (See Std. 515001)

WATERWAY INFORMATION

Drainage Area = 6.04 Sq. Mi. Low Grade Elev. = 621.07 @ Sta. 102+21.40

Flood	Freq. Yr.	C.F.S.	Opening Sq. Ft.		Nat. H.W.E.	Head - Ft.		Headwater El.	
			Exist.	Prop.		Exist.	Prop.	Exist.	Prop.
Design	30	1467	307	318	620.62	0.54	0.50	621.16	621.12
Base	100	1940	326	349	621.55	0.79	0.74	622.34	622.29

Construction of this project complies with IDNR,
 Office of Water Resources Statewide Permit No. 12.

OVER THE ROAD FLOW

Freq. Yr.	Existing (Sq. Ft.)	Proposed (Sq. Ft.)
30	0	0
100	103	103

DESIGN SPECIFICATIONS

2010 AASHTO & Interims

DESIGN STRESSES

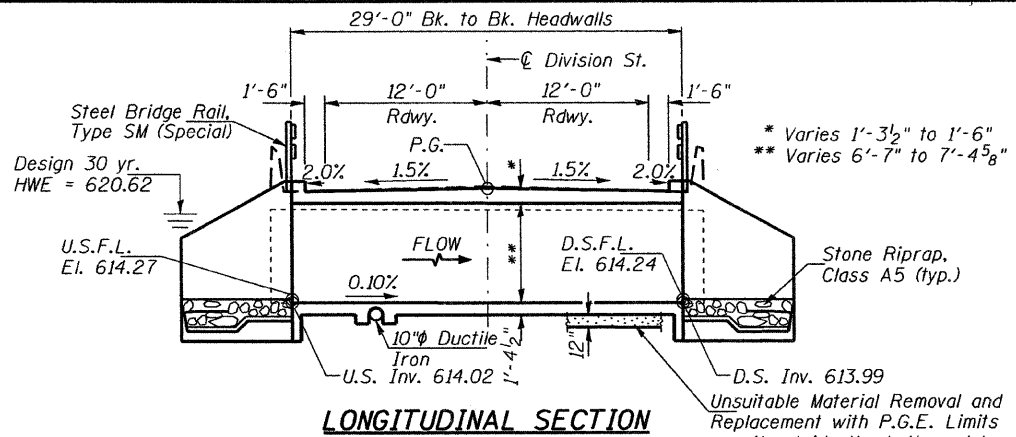
FIELD UNITS

$f'c = 3,500$ psi
 $f_y = 60,000$ psi (Reinforcement)

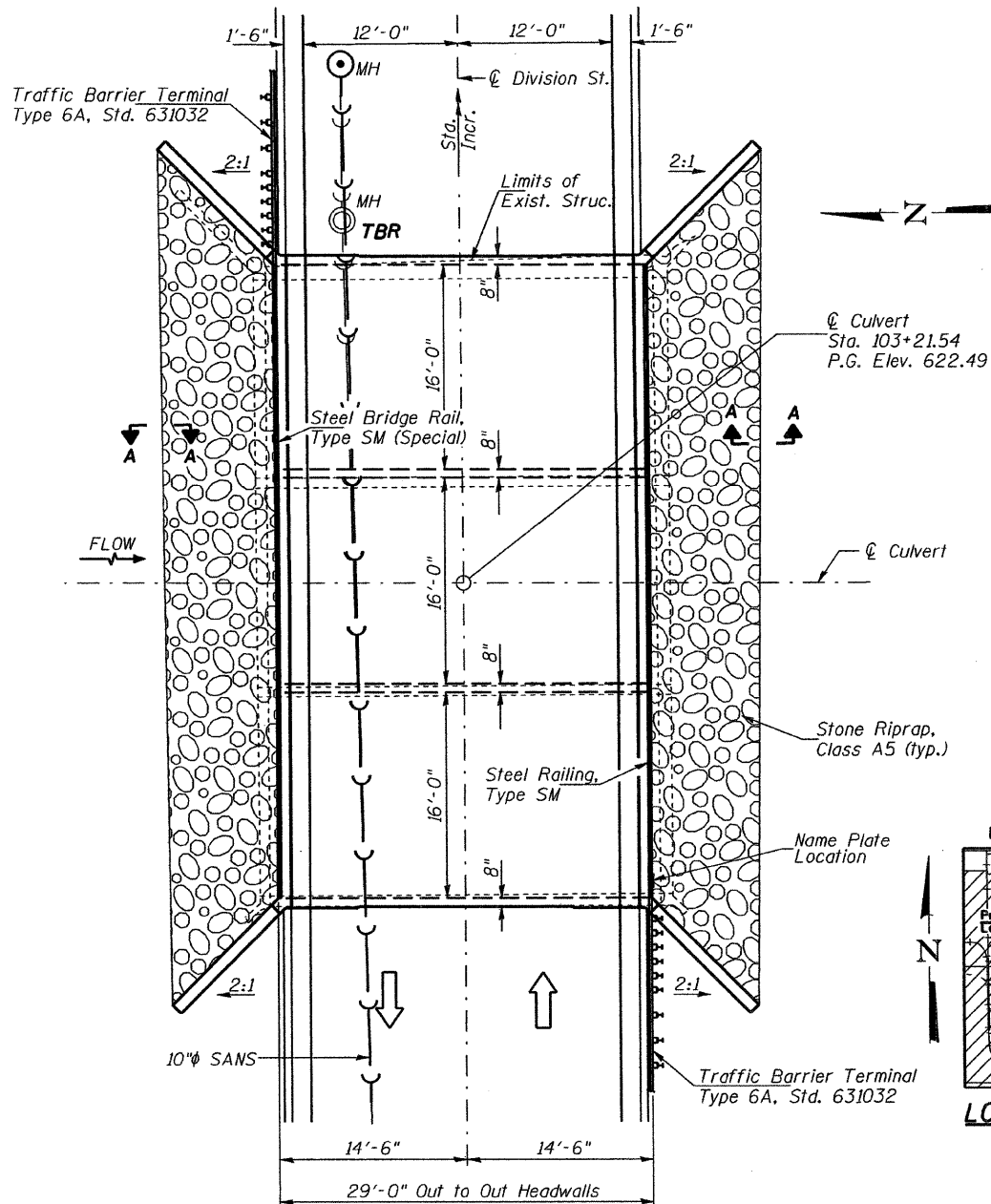
LOADING HL-93

Allow 50#/sq. ft. for future wearing surface.

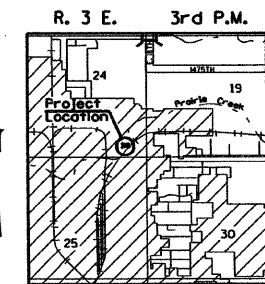
DESIGNED	NPH
CHECKED	BAN
DRAWN	RMD
CHECKED	BAN



LONGITUDINAL SECTION



PLAN



LOCATION SKETCH

GENERAL NOTES

Reinforcement Bars shall conform to the requirements of ASTM A 706 Grade 60.
 For backfilling and embankment see Standard Specifications.
 Exposed concrete edges shall have a 3/4" chamfer unless otherwise noted.
 Precast culvert option will not be allowed.
 Layout of stone riprap may be varied in the field to suit ground conditions as directed by the Engineer.
 A distance of half the length of the wingwall, but not less than 6 feet of the barrel shall be poured monolithically with the wingwall.
 All excavation required for construction of the culvert in accordance with the Standard Specifications shall be included in the cost of Concrete Box Culverts.
 Reinforcement bars designated (E) shall be epoxy coated.
 Areas of excavation required for removal of the existing structure or construction of the new culvert shall be backfilled with P.G.E. See Special Provisions for more detailed information.
 Actual quantity, if any, of Removal & Disposal of Unsuitable Material shall be determined in the field by the Engineer.

TOTAL BILL OF MATERIAL

ITEM	UNIT	TOTAL
Concrete Box Culverts	CU YD	193.3
Reinforcement Bars, Epoxy Coated	POUND	32,400
① Removal of Existing Structures	EACH	1
Name Plates	EACH	1
Stone Riprap, Class A5	SQ YD	118
Filter Fabric	SQ YD	118
Steel Bridge Rail, Type SM (Special)	FOOT	102
Porous Granular Embankment	CU YD	140
Protective Coat	SQ YD	172
Removal & Disposal of Unsuitable Material	CU YD	57

① See Special Provisions

DESIGN SCOUR TABLE

Location	Upstream	Downstream
Design Scour Elevation	614.02	613.99

I certify that to the best of my knowledge, information and belief, this bridge design is structurally adequate for the design loading shown on the plans. The design is an economical one for the style of structure and complies with requirements of the current AASHTO Standard Specification for Highway Bridges.
 This design complies with all requirements of the current AASHTO Guide Specifications for Seismic Design of Highway Bridges.

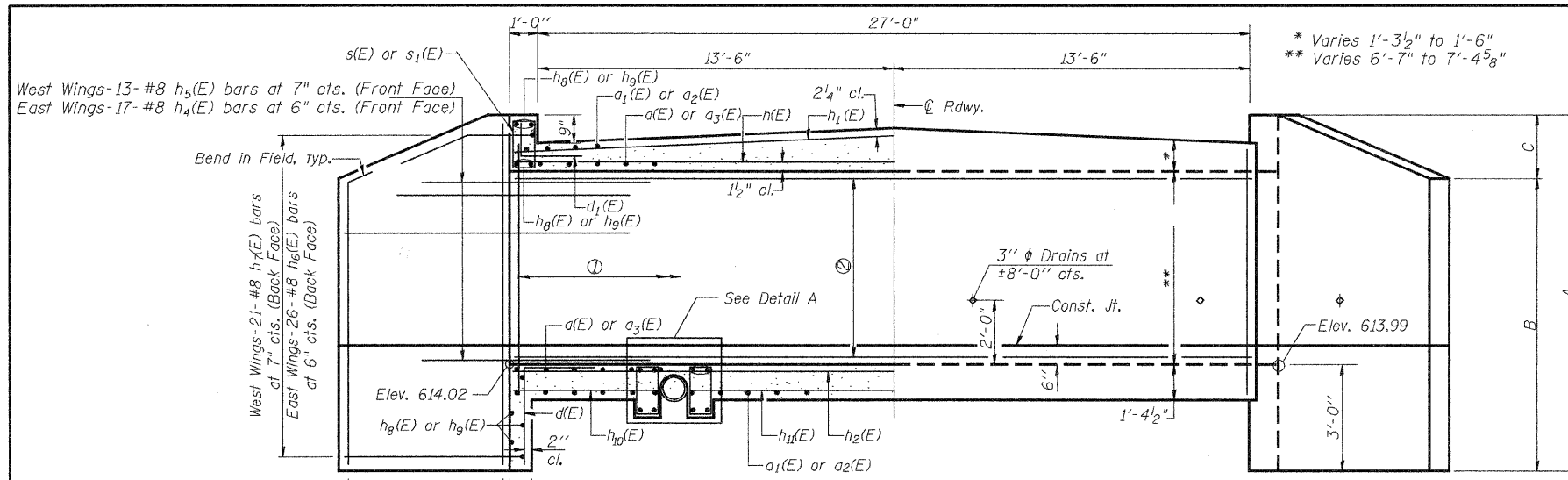
Benjamin A. Nebel 3/20/2012
 Illinois Structural No. 6527
 Expires 11/30/2012



Lic. Exp. 11/30/2012

GENERAL PLAN & ELEVATION

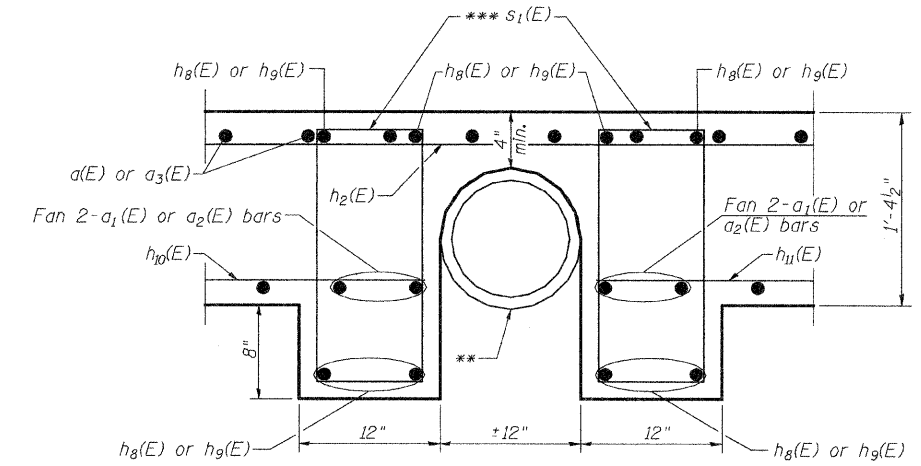
SHEET NO. 1	RTE.	SECTION	COUNTY	TOTAL SHEETS	SHEET NO.
5 SHEETS	DIVISION ST.	11-00692-00-DR	LA SALLE	15	9
	S.N. 050-8025		CONTRACT NO. 87521		
	FED. ROAD DIST. NO. 7 ILLINOIS		FED. AID PROJECT BRM-5066(017)		



	A	B	C
NW	12'-0 7/8"	8'-0 3/8"	4'-0 1/2"
NE	12'-10 1/2"	8'-5"	4'-5 1/2"
SW	12'-1 1/4"	8'-0 3/4"	4'-0 1/2"
SE	12'-10 3/4"	8'-5 1/4"	4'-5 1/2"

- 39-#4 v(E) bars at 9" cts. West Exterior Wall
- 39-#4 v1(E) bars at 9" cts. West Interior Wall
- 39-#4 v2(E) bars at 9" cts. East Interior Wall
- 39-#4 v3(E) bars at 9" cts. East Exterior Wall

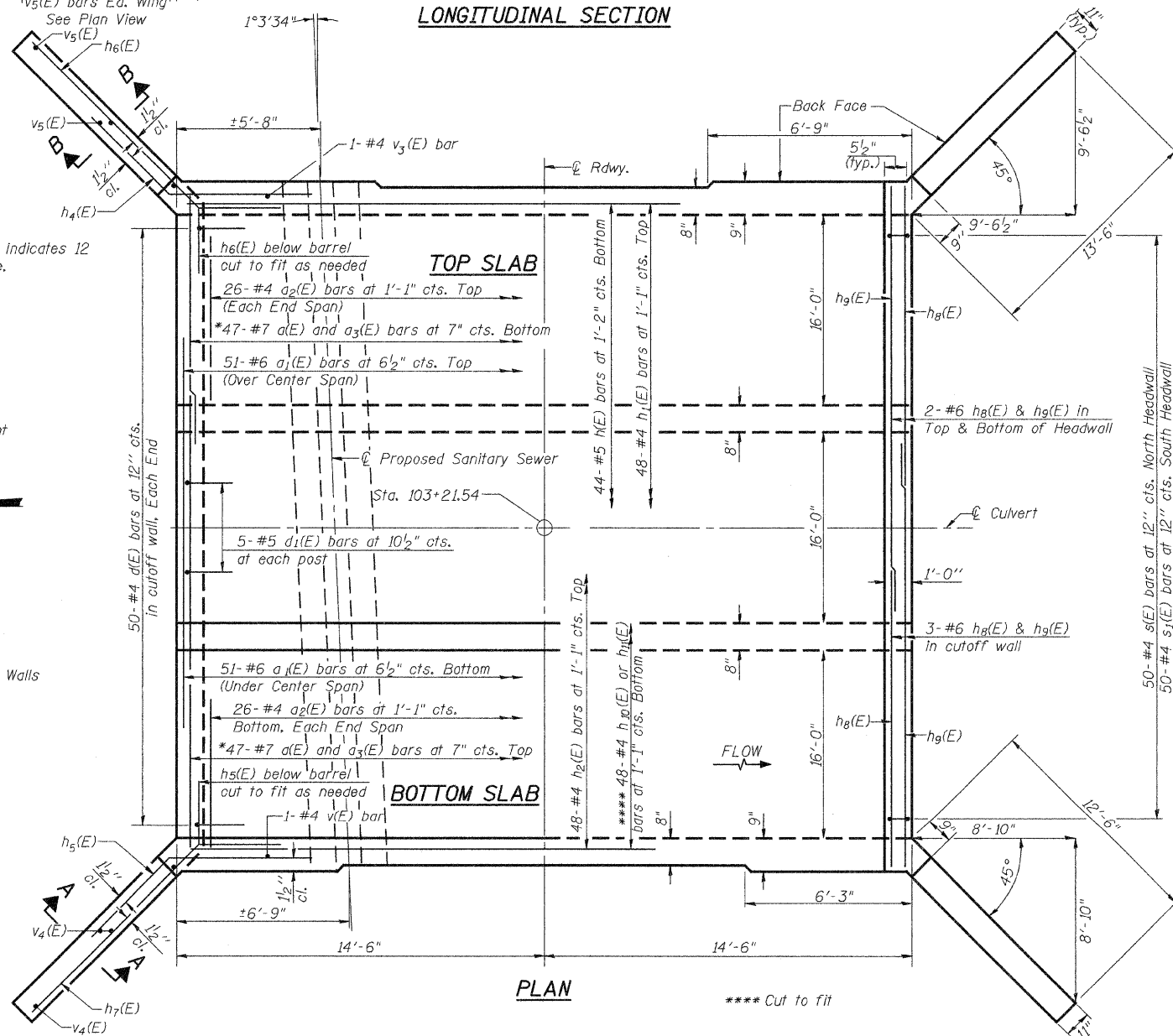
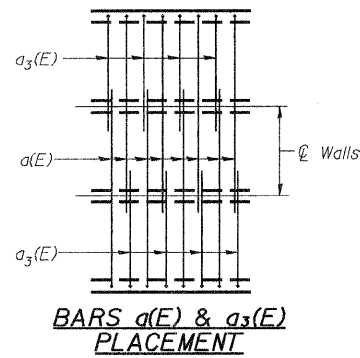
- 9-#5 h3(E) bars at 9 1/2" cts. West Exterior Wall
- 9-#5 h3(E) bars at 9 1/2" cts. West Interior Wall
- 9-#5 h3(E) bars at 10" cts. East Interior Wall
- 10-#5 h3(E) bars at 9 1/2" cts. East Exterior Wall



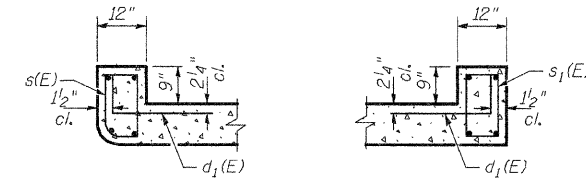
MIN. BAR LAP
 #6 = 3'-0"
 #7 = 3'-11"

Notes:
 Bars indicated thus 12x4-#5 etc. indicates 12 lines of bars with 4 lengths per line.

* Alternate Bar Placement (See Below)



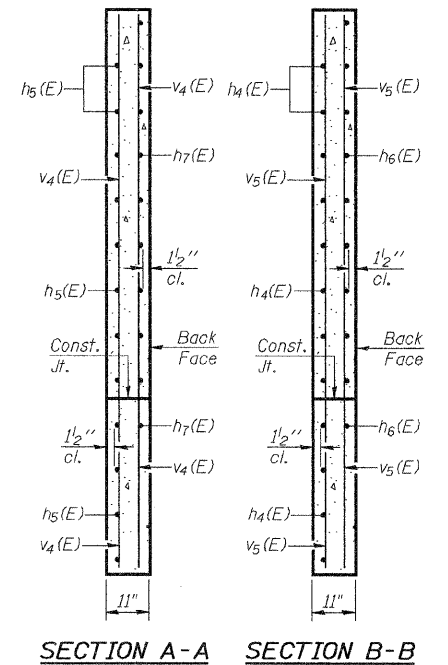
Proposed sanitary sewer.
 ** See special provisions.
 *** 50-#4 s1(E) bars at 12" cts. along sanitary sewer



NORTH HEADWALL SOUTH HEADWALL

HEADWALL DETAIL

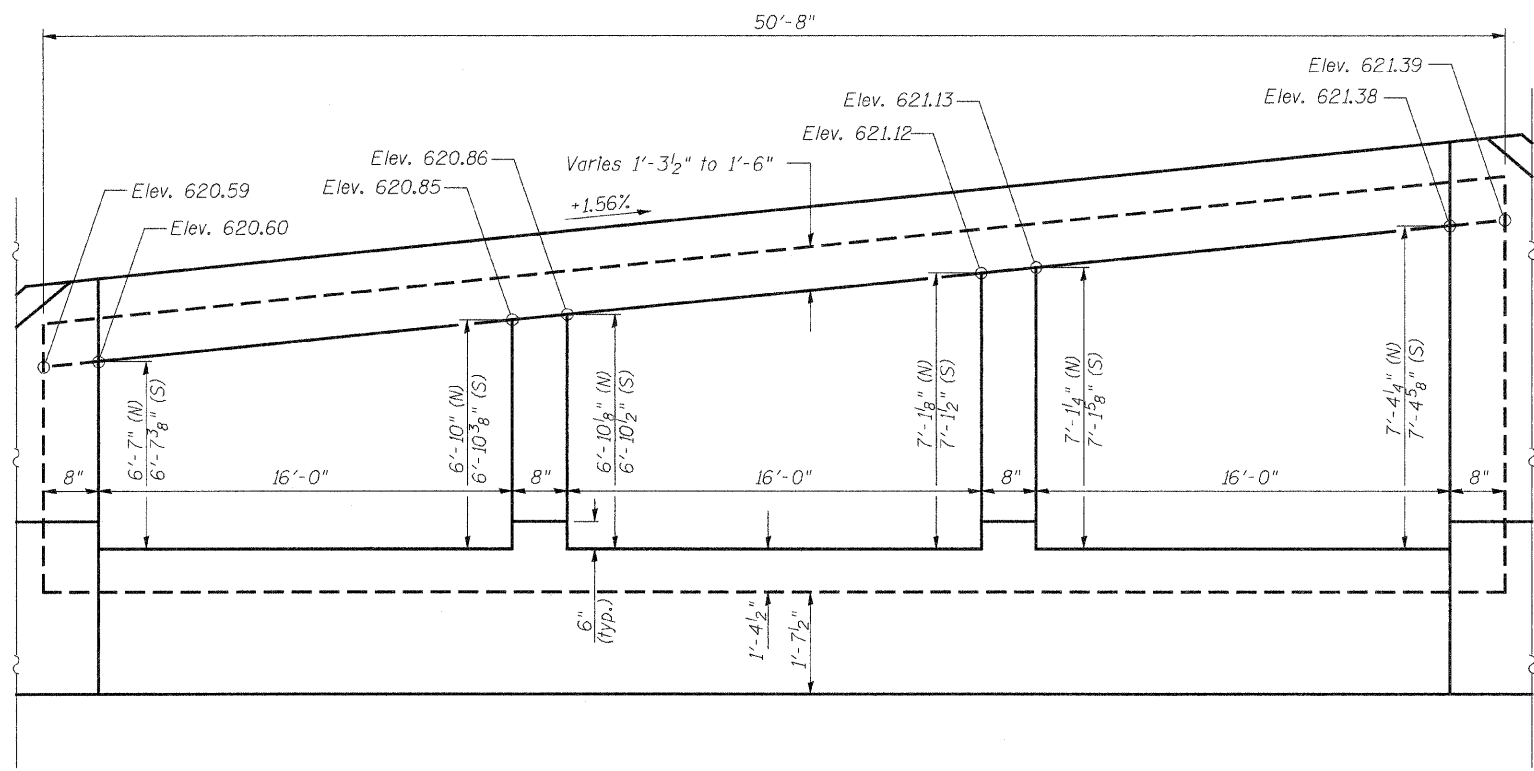
The headwalls will extend for the full length of the slab. They will not end at the intersection of the headwall and wingwall.



SECTION A-A SECTION B-B

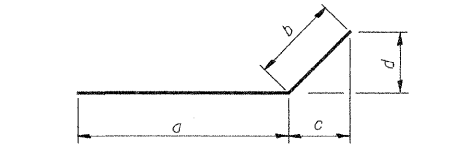
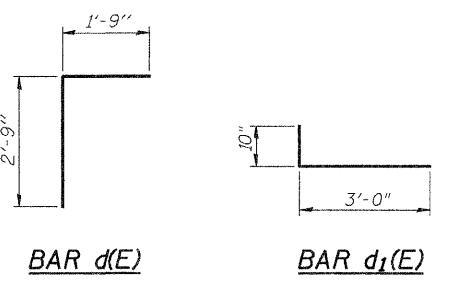
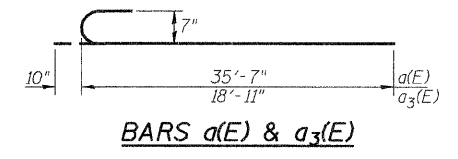
CULVERT DETAILS

SHEET NO. 2	RTE.	SECTION	COUNTY	TOTAL SHEETS	SHEET NO.
5 SHEETS	DIVISION ST.	11-00692-00-DR	LA SALLE	15	10
	S.N. 050-8025		CONTRACT NO. 87521		
	FED. ROAD DIST. NO. 7	ILLINOIS	FED. AID PROJECT BRM-5066(017)		



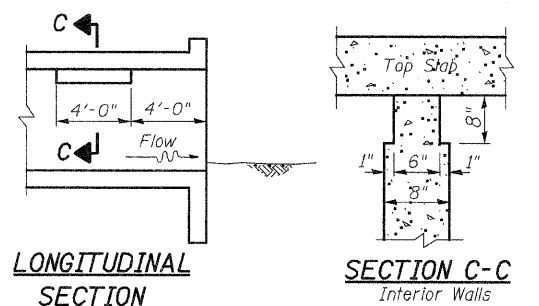
END ELEVATION

Showing Dimensions (Downstream Looking Upstream)



Bar	a	b	c	d
h4(E)	5'-0"	3'-0"	2'-1 1/2"	2'-1 1/2"
h5(E)	5'-0"	3'-0"	2'-1 1/2"	2'-1 1/2"
h6(E)	13'-6"	3'-0"	2'-1 1/2"	2'-1 1/2"
h7(E)	12'-6"	3'-0"	2'-1 1/2"	2'-1 1/2"

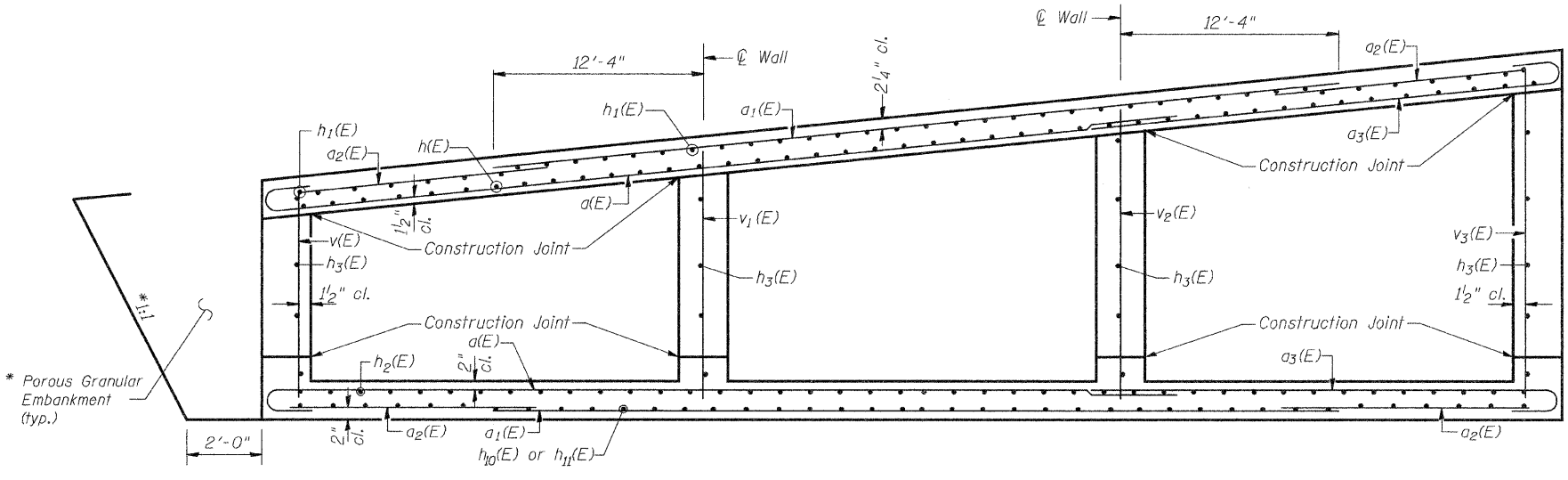
BARS h4(E), h5(E), h6(E), & h7(E)



PHOEBE NESTING SITE DETAIL
(Downstream End Only - Cost Included with Concrete Box Culverts)

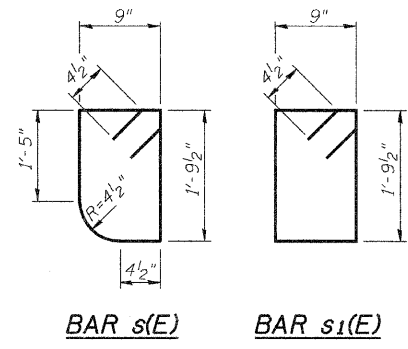
BILL OF MATERIAL

Bar	No.	Size	Length	Shape
a(E)	94	#7	36'-5"	C
a1(E)	102	#6	41'-4"	—
a2(E)	104	#4	7'-2"	—
a3(E)	94	#7	19'-9"	C
d(E)	100	#4	4'-6"	L
d1(E)	90	#5	3'-10"	L
h(E)	44	#5	28'-9"	—
h1(E)	48	#4	28'-9"	—
h2(E)	48	#4	28'-9"	—
h3(E)	37	#5	28'-9"	—
h4(E)	34	#8	8'-0"	—
h5(E)	26	#8	8'-0"	—
h6(E)	52	#8	16'-6"	—
h7(E)	42	#8	15'-6"	—
h8(E)	22	#6	23'-0"	—
h9(E)	22	#6	30'-6"	—
h10(E)	48	#4	6'-0"	—
h11(E)	48	#4	21'-6"	—
s(E)	50	#4	5'-8"	U
s1(E)	150	#4	5'-10"	U
v(E)	41	#4	8'-10"	—
v1(E)	39	#4	9'-1"	—
v2(E)	39	#4	9'-4"	—
v3(E)	41	#4	9'-7"	—
v4(E)	8	#4	11'-9"	—
v5(E)	8	#4	12'-7"	—
Concrete Box Culverts	CU YD		193.3	
Reinforcement Bars, Epoxy Coated	POUND		32,400	



SECTION THRU BARREL

Showing Reinforcement (Downstream Looking Upstream)

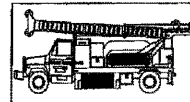


BAR s(E)

BAR s1(E)

CULVERT DETAILS

SHEET NO. 3	RTE.	SECTION	COUNTY	TOTAL SHEETS	SHEET NO.
5 SHEETS	DIVISION ST.	11-00692-00-DR	LA SALLE	15	11
	S.N. 050-8025		CONTRACT NO. 87521		
	FED. ROAD DIST. NO. 7 ILLINOIS		FED. AID PROJECT BRM-5066(017)		



Midwest Testing Services, Inc.
3705 Progress Blvd.
Peru, IL 61354

BORING LOG

Sheet 1 of 2

Phone: 815-223-6696
Fax: 815-223-6659
e-mail: mts37@comcast.net

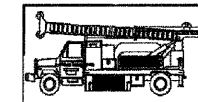
Client: Hutchison Engineering, Inc.
Project Name: Division St. Over Prairie Creek S.N. 050-8005
Project Site: Streator, Illinois

Boring No. B-1
Surface Elev. 622.95
Auger Depth 31' Rotary Depth NA
Start Date 10/12/11 Finish Date 11/12/11

Location: 7' Rt. of centerline station 103+51

(DEPTH) ELEV.	DESCRIPTION OF MATERIALS	Graphic Log	Depth in feet	SAMPLES						DRILLED BY		REMARKS
				Sample No.	Sample Type	Qu (TSF)	N Value (Blows)	Bulge / Shear	Moisture (%)	Dry Density (PCF)		
622.95												
621.95	Stiff Black And Brown Clay (Fill)		1							Randy Safranski Diedrich D-120		
620.95		2										
619.95	Stiff Brown Clay		3	1	SS	1.3	7	B	20			
618.95		4										
617.95	Stiff Brown Clay		5									
616.95		6	2	SS	1.4	9	B	20				
615.95	Stiff Brown Clay		7									
614.95		8	3	SS	1.1	8	B	22				
613.95	Medium Brown Gray Silt		9									
612.95		10	4	SS	--	11	--	19				
611.95	Medium Gray Silty Clay Loam Till		11									
610.95		12										
609.95	Medium Gray Silty Clay Loam Till		13	5	SS	0.8	6	B	21			
608.95		14										
607.95	Stiff Gray Silty Clay Loam Till		15									
606.95		16	6	SS	1.5	12	B	17				
605.95	Very Stiff Gray Silty Clay Loam Till		17									
604.95		18	7	SS	3.7	20	S	15				
603.95	Very Stiff Gray Silty Clay Loam Till		19									
602.95		20	8	SS	2.6	19	S	14				

Groundwater Data: No groundwater encountered at time of subsurface investigation.
Comments:



Midwest Testing Services, Inc.
3705 Progress Blvd.
Peru, IL 61354

BORING LOG

Sheet 2 of 2

Phone: 815-223-6696
Fax: 815-223-6659
e-mail: mts37@comcast.net

Client: Hutchison Engineering, Inc.
Project Name: Division St. Over Prairie Creek S.N. 050-8005
Project Site: Streator, Illinois

Boring No. B-1
Surface Elev. 622.95
Auger Depth 31' Rotary Depth NA
Start Date 10/12/11 Finish Date 11/12/11

Location: 7' Rt. of centerline station 103+51

(DEPTH) ELEV.	DESCRIPTION OF MATERIALS	Graphic Log	Depth in feet	SAMPLES						DRILLED BY		REMARKS
				Sample No.	Sample Type	Qu (TSF)	N Value (Blows)	Bulge / Shear	Moisture (%)	Dry Density (PCF)		
601.95												
600.95	Very Stiff Gray Silty Clay Loam Till		22							Randy Safranski Diedrich D-120		
599.95		23	9	SS	2.8	18	S	15				
598.95	Very Stiff Gray Silty Clay Loam Till		24									
597.95		25	10	SS	3.3	21	S	13				
596.95	Very Stiff Gray Silty Clay Loam Till		26									
595.95		27										
594.95	Very Stiff Gray Silty Clay Loam Till		28									
593.95		29										
592.95	Very Stiff Gray Silty Clay Loam Till		30									
591.95		31	11	SS	2.8	19	S	14				
590.95	Bottom of Boring		32									
589.95		33										
588.95	Bottom of Boring		34									
587.95		35										
586.95	Bottom of Boring		36									
585.95		37										
584.95	Bottom of Boring		38									
583.95		39										
582.95	Bottom of Boring		40									
581.95		41										

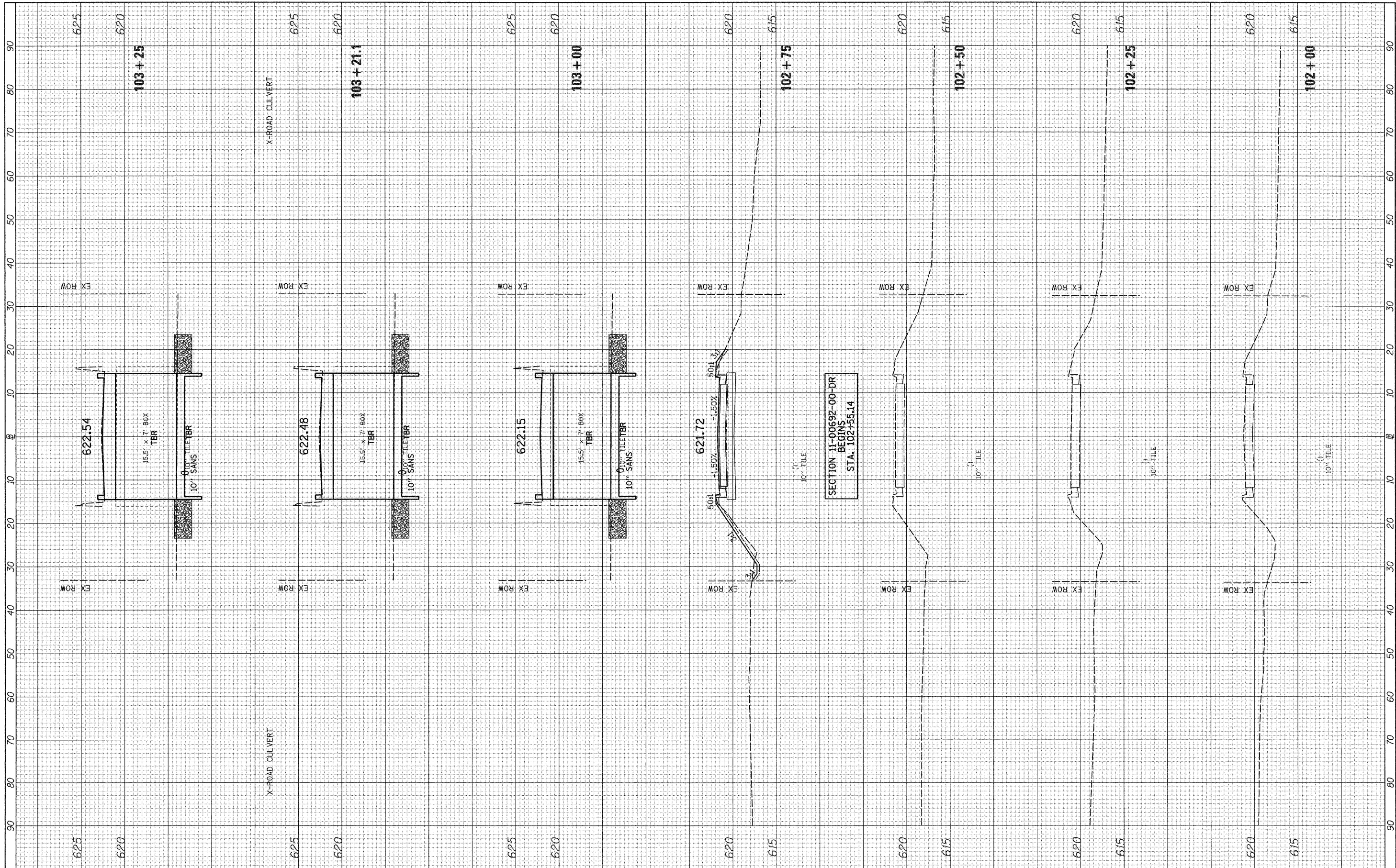
Groundwater Data: No groundwater encountered at time of subsurface investigation.
Comments:

SOIL BORING LOGS

SHEET NO. 5 5 SHEETS	RTE.	SECTION	COUNTY	TOTAL SHEETS	SHEET NO.
	DIVISION ST.	11-00692-00-DR	LA SALLE	15	13
	S.N. 050-8025		CONTRACT NO. 87521		
FED. ROAD DIST. NO. 7 ILLINOIS			FED. AID PROJECT BRM-5066(017)		

FINAL SURVEY	SURVEYED	DATE
NOTE BOOK	PLOTTED	BY
NO.	TEMPLATE	
	AREAS CHECKED	

ORIGINAL SURVEY	SURVEYED	DATE
NOTE BOOK	PLOTTED	BY
NO.	TEMPLATE	
	AREAS CHECKED	



SECTION 11-00692-00-DR
 BEGINS
 STA. 102+55.14

FILE NAME =
 v:\3044\3044xhsta.dgn

USER NAME = bdecrane
 PLOT SCALE = 10.0000' / IN.
 PLOT DATE = 3/21/2012

DESIGNED -	REVISED -
DRAWN -	REVISED -
CHECKED -	REVISED -
DATE -	REVISED -

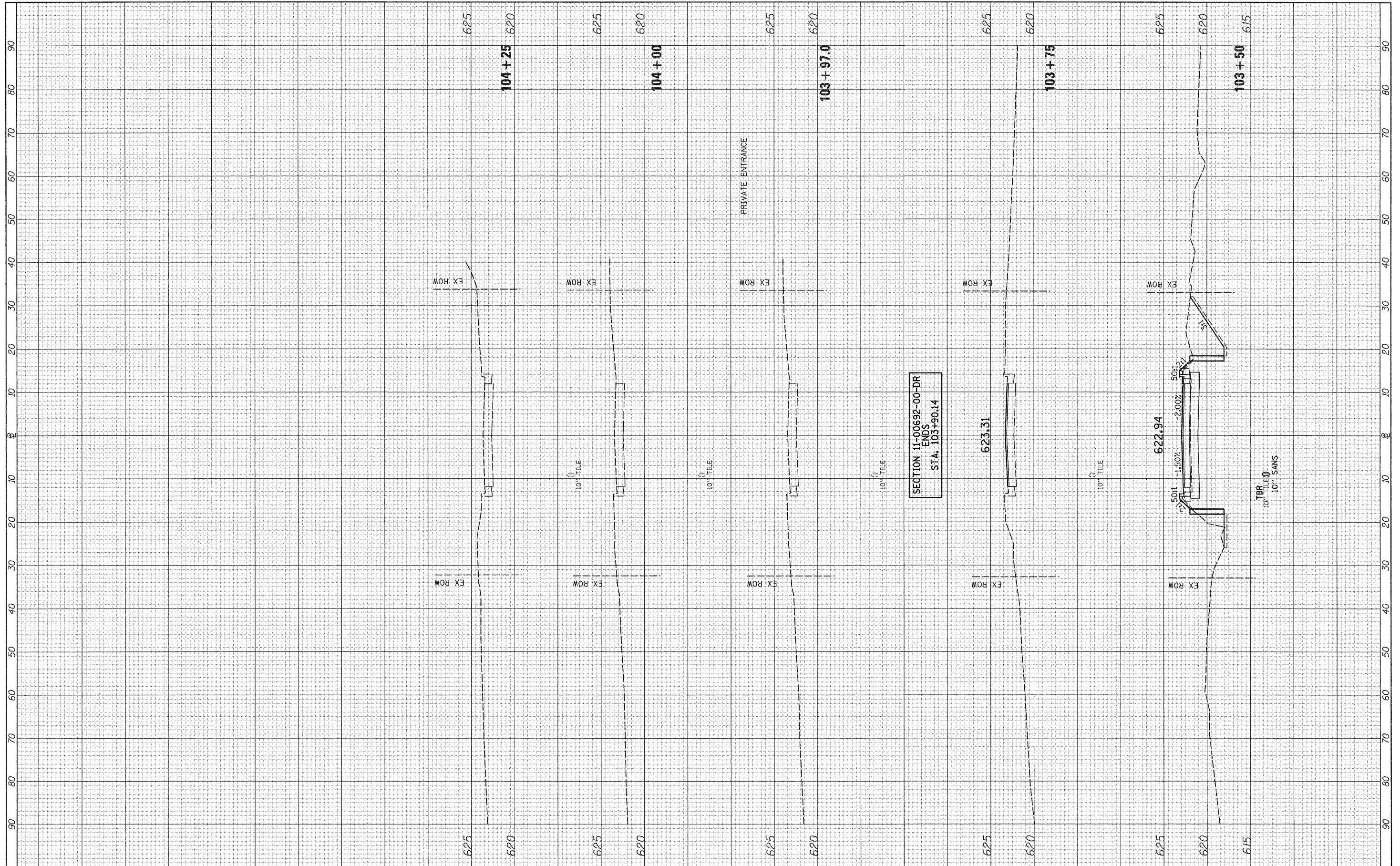
**STATE OF ILLINOIS
 DEPARTMENT OF TRANSPORTATION**

DIVISION ST. CROSS SECTIONS
 SCALE: H=10 V=5 SHEET NO. 1 OF 2 SHEETS STA. 102+00 TO STA. 103+25

F.A. RTE.	SECTION	COUNTY	TOTAL SHEETS	SHEET NO.
N/A	11-00692-00-DR	LA SALLE	15	14
FED. ROAD DIST. NO. 7 [ILLINOIS] FED. AID PROJECT BRM-5066(017)			CONTRACT NO. 87521	

FINAL SURVEY	SURVEYED	DATE
NOTE BOOK NO.	PLOTTED	BY
AREAS CHECKED	TEMPLATE	

ORIGINAL SURVEY	SURVEYED	DATE
NOTE BOOK NO.	PLOTTED	BY
AREAS CHECKED	TEMPLATE	



FILE NAME =
v:\3044\3044xhta.dgn

USER NAME = bdeoraene
PLOT SCALE = 10.0000' / IN.
PLOT DATE = 3/21/2012

DESIGNED -	REVISED -
DRAWN -	REVISED -
CHECKED -	REVISED -
DATE -	REVISED -

**STATE OF ILLINOIS
DEPARTMENT OF TRANSPORTATION**

DIVISION ST. CROSS SECTIONS

SCALE: H=10 V=5 SHEET NO. 2 OF 2 SHEETS STA. 103+50 TO STA. 104+25

F.A. RTE.	SECTION	COUNTY	TOTAL SHEETS	SHEET NO.
N/A	11-00692-00-DR	LA SALLE	15	15
CONTRACT NO. 87521			FED. ROAD DIST. NO. 7 (ILLINOIS) FED. AID PROJECT BRM-5066(017)	