

STATE OF ILLINOIS
DEPARTMENT OF TRANSPORTATION
DIVISION OF HIGHWAYS
**PROPOSED
HIGHWAY PLANS**

F.A.P. RTE.	SECTION	COUNTY	TOTAL SHEETS	SHEET NO.
317	20 RS-6	IROQUOIS	14	1
		ILLINOIS	CONTRACT NO. 66C27	

INDEX OF SHEETS

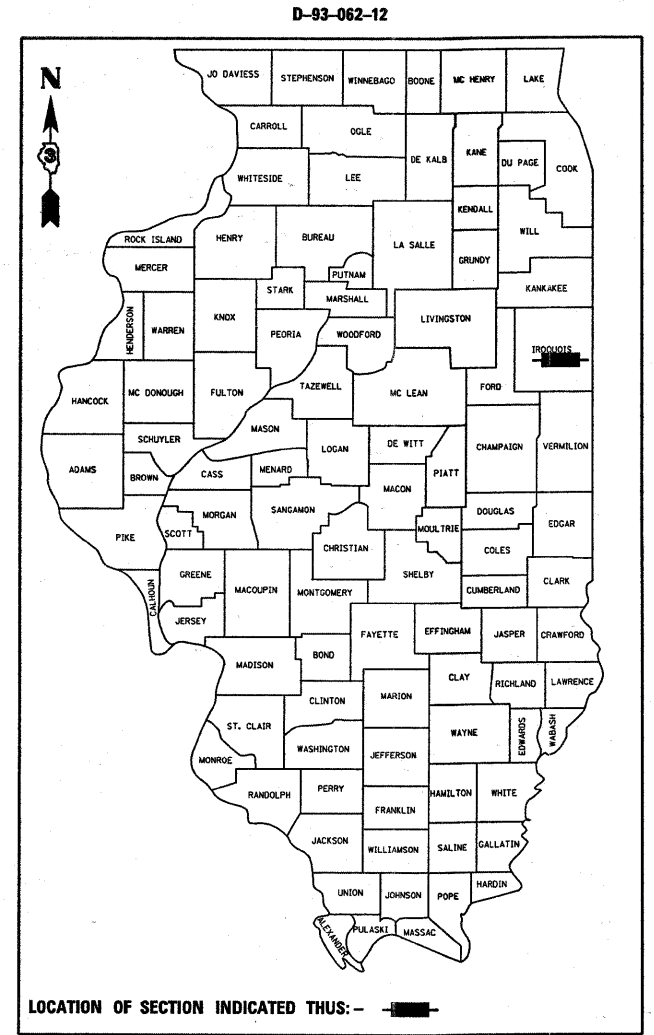
1	COVER SHEET
2	GENERAL NOTES
3-6	SUMMARY OF QUANTITIES
7-8	TYPICAL SECTIONS
9-11	SCHEDULES
12	PROJECT LAYOUT
13-14	MISCELLANEOUS DETAILS

LIST OF ILLINOIS DOT HIGHWAY STANDARDS

000001-06	STANDARD SYMBOLS, ABBREVIATIONS AND PATTERNS
001001-02	AREAS OF REINFORCEMENT BARS
001008	DECIMAL OF AN INCH AND OF A FOOT
406201-01	MAILBOX TURNOUT
424001-06	PERPENDICULAR CURB RAMPS FOR SIDEWALKS
424006	DIAGONAL CURB RAMPS FOR SIDEWALKS
424011	CORNER PARALLEL CURB RAMPS FOR SIDEWALKS
424016	MID-BLOCK CURB RAMPS FOR SIDEWALKS
424021	DEPRESSED CORNER FOR SIDEWALKS
424026	ENTRANCE / ALLEY PEDESTRIAN CROSSINGS
442201-03	CLASS C AND D PATCHES
606001-04	CONCRETE CURB TYPE B AND COMBINATION CONCRETE CURB AND GUTTER
701001-02	OFF-ROAD OPERATIONS 2L, 2W, MORE THAN 15' (4.5 m) AWAY
701006-03	OFF-ROAD OPERATIONS 2L, 2W, 15' (4.5 m) TO 24" (600 mm) FROM PAVEMENT EDGE
701201-04	LANE CLOSURE, 2L, 2W, DAY ONLY, FOR SPEEDS ≥ 45 MPH
701301-04	LANE CLOSURE, 2L, 2W, SHORT TIME OPERATIONS
701306-03	LANE CLOSURE, 2L, 2W, SLOW MOVING OPERATIONS DAY ONLY, FOR SPEEDS ≥ 45 MPH
701311-03	LANE CLOSURE, 2L, 2W, MOVING OPERATIONS - DAY ONLY
701801-05	SIDEWALK, CORNER OR CROSSWALK CLOSURE
701901-02	TRAFFIC CONTROL DEVICES
780001-03	TYPICAL PAVEMENT MARKINGS
781001-03	TYPICAL APPLICATIONS RAISED REFLECTIVE PAVEMENT MARKERS

**FAP 317 (US 24)
SECTION 20 RS-6
PROJECT : NHF-0317(093)
3P MILLING & RESURFACING
IROQUOIS COUNTY**

C-93-119-12



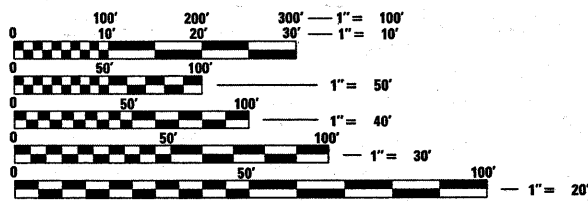
OTHER PRINCIPAL ARTERIAL
2011 ADT = 5,300
P.V. = 83.5%
S.U. = 5.2%
M.U. = 11.3%

STATE OF ILLINOIS
DEPARTMENT OF TRANSPORTATION
DIVISION OF HIGHWAYS

SUBMITTED March 23 2012
Eric S. Theriault
DEPUTY DIRECTOR OF HIGHWAYS, REGION ENGINEER

May 11 2012
John D. Baronselli, P.E.
acting ENGINEER OF DESIGN AND ENVIRONMENT

May 11 2012
William R. Freese
acting DIRECTOR OF HIGHWAYS, CHIEF ENGINEER

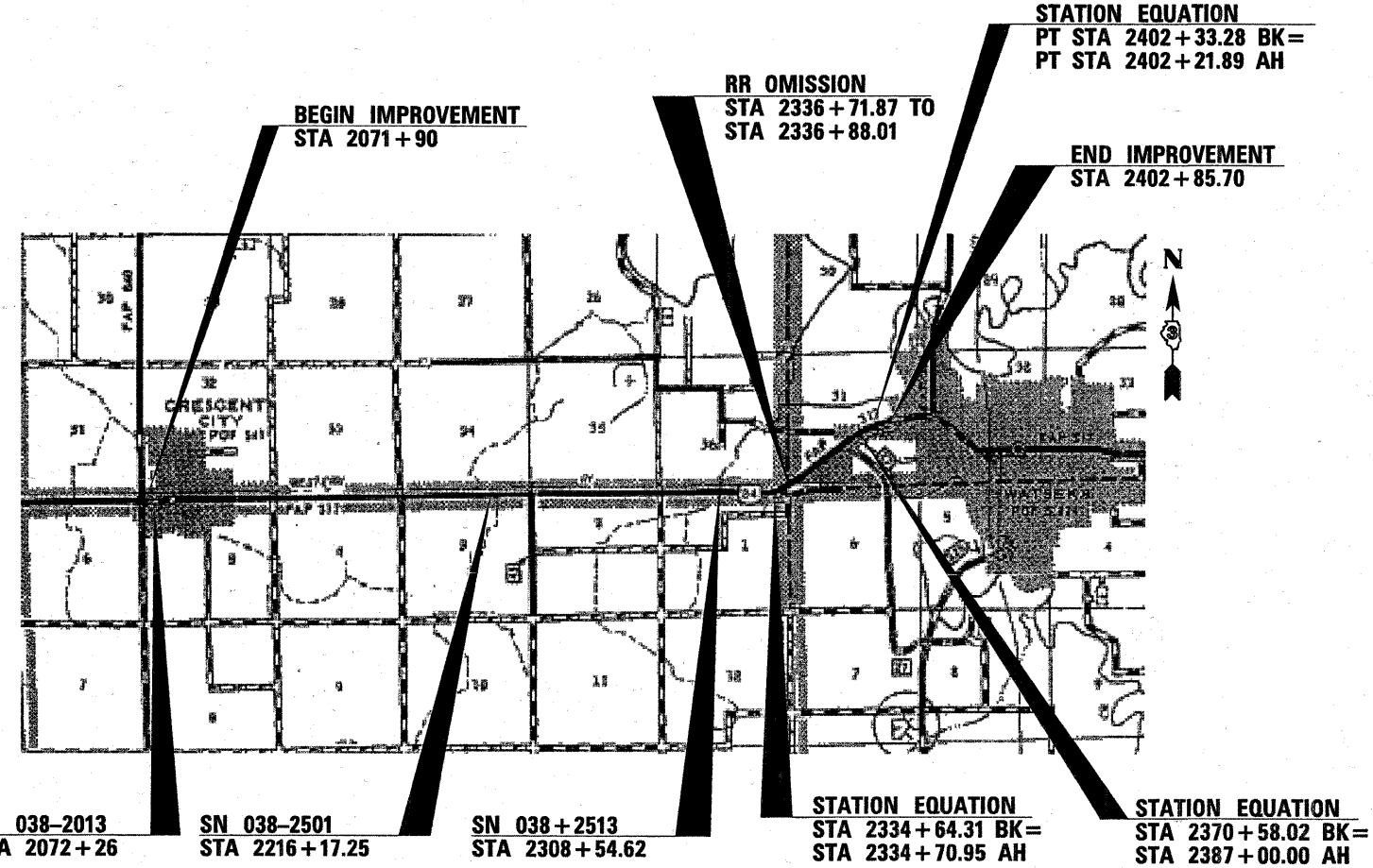


FULL SIZE PLANS HAVE BEEN PREPARED USING STANDARD ENGINEERING SCALES. REDUCED SIZED PLANS WILL NOT CONFORM TO STANDARD SCALES. IN MAKING MEASUREMENTS ON REDUCED PLANS, THE ABOVE SCALES MAY BE USED.

J.U.L.I.E.
JOINT UTILITY LOCATION INFORMATION FOR EXCAVATION
1-800-892-0123
OR 811

PROJECT ENGINEER: JOE KANNEL, PE
UNIT CHIEF: MICHELE LINDEMANN, PE

CONTRACT NO. 66C27



GROSS LENGTH = 31458.47 FT. = 5.958 MILE
NET LENGTH = 31442.33 FT. = 5.955 MILE

**PRINTED BY THE AUTHORITY
OF THE STATE OF ILLINOIS**

GENERAL NOTES

THE THICKNESS OF HMA SHOWN ON THE PLANS IS THE NOMINAL THICKNESS. DEVIATIONS FROM THE NOMINAL THICKNESS WILL BE PERMITTED WHEN SUCH DEVIATIONS OCCUR DUE TO IRREGULARITIES IN THE EXISTING SURFACE OR BASE ON WHICH THE HMA IS PLACED.

THE HMA SURFACE OF ALL MAILBOX TURNOUTS, PRIVATE ENTRANCES, COMMERCIAL ENTRANCES, AND SIDE ROADS SHALL BE MADE NEATLY, IN A WORKMANLIKE MANNER, AND SHALL ACCURATELY CONFORM TO THE SHAPES AND DIMENSIONS SHOWN ON THE PLAN DETAILS. IF REQUIRED BY THE ENGINEER, THE CONTRACTOR SHALL BE REQUIRED TO SAW CUT THE HMA SURFACE TO CONFORM TO THE SHAPES AND DIMENSIONS SHOWN ON THE PLAN DETAILS. THIS WORK SHALL BE INCLUDED IN THE COST OF THE HMA SURFACE.

THE ENGINEER WILL BE THE SOLE JUDGE CONCERNING CURING TIME FOR THE VARIOUS HMA LIFTS.

SEEDING SHALL NOT BE PERMITTED AT ANY TIME WHEN THE GROUND IS FROZEN, WET, OR IN AN UNTILLABLE CONDITION. LOCATIONS TO BE SEEDED WILL BE DETERMINED BY THE ENGINEER.

THE FINISHED EARTHWORK SHALL HAVE A VEGETATION SUSTAINING SOIL COVERING THE TOP FOUR INCHES IN AREAS TO BE SEEDED OR SODDED. THE VEGETATION SUSTAINING SOIL REQUIRED WILL NOT BE PAID FOR SEPARATELY BUT SHALL BE INCLUDED IN THE COST OF FURNISHED EXCAVATION.

FOR NEW CONSTRUCTION, PLACE CURB RAMPS FOR SIDEWALKS AT ALL LOCATIONS WHERE PROPOSED SIDEWALK ABUTS CURB AT STREET ENTRANCES

ALL SOILS DISTURBED BY ANY CONSTRUCTION OPERATION SHALL BE LEFT ON, AND INCORPORATED WITHIN, THE PROJECT LIMITS AND EXISTING RIGHT OF WAY

ON EXISTING PAVEMENT WHICH MAY BE SUPERELEVATED, THE NEW HMA PAVEMENT SHALL BE BUILT WITH THE SAME SUPERELEVATION UNLESS NEW SUPERELEVATION RATES ARE GIVEN ON THE PLANS.

ANY REFERENCE TO A STANDARD IN THESE PLANS SHALL BE INTERPRETED TO MEAN THE EDITION AS INDICATED BY THE SUBNUMBER SHOWN IN THE LIST OF STANDARDS OR THE COPY INCLUDED IN THESE PLANS.

THE FOLLOWING RATES OF APPLICATION HAVE BEEN USED IN CALCULATING PLAN QUANTITIES:

GRANULAR MATERIALS	2.05	TONS / CU YD
AGGREGATE (PRIME COAT)	0.002	TONS / SQ YD
HMA RESURFACING	112	LBS / SQ YD / IN
SHORT TERM PAVEMENT MARKING	10	FT / 100 FT OF APPLICATION
MIX FOR CRACKS, JTS & FLGWYS	0.0003	TONS / SQ YD
LEVEL BINDER (HAND METHOD)	0.0005	TONS / SQ YD
SUPPLEMENTAL WATERING	3	GAL / SQ YD / APPLICATION
CALCIUM CHLORIDE	2	LB / SQ YD / APPLICATION
AGGREGATE DITCH CHECKS	5	TONS AGGREGATE

BITUMINOUS MATERIALS (PRIME COAT) RATES		
SURFACE TYPE	ESTIMATED TRUCK APPLICATION RATE	RESIDUAL RATE
AGGREGATE BASES	0.375 GAL / SQ YD	N/A
MILLED HMA OR PCC PAVEMENT	0.08 GAL / SQ YD	0.04 GAL / SQ YD
EXISTING PAVEMENT	0.05 GAL / SQ YD	0.025 GAL / SQ YD
FOG COAT (BETWEEN ADDITIONAL HMA LIFTS)	0.05 GAL / SQ YD	0.025 GAL / SQ YD

ESTIMATED TRUCK APPLICATION RATE USED FOR CALCULATING PLAN QUANTITIES

THE CONTRACTOR SHALL CONTACT JULIE AT LEAST 48 HOURS PRIOR TO EXCAVATION TO DETERMINE WHICH UTILITIES ARE IN THE AREA.

COMMITMENTS

STATE OF ILLINOIS
DEPARTMENT OF TRANSPORTATION
DISTRICT THREE

PREPARED BY: Dave Prorak
DISTRICT STUDIES & PLANS ENGINEER

DATE: March 23, 2012

EXAMINED BY: Richard J. [Signature]
DISTRICT CONSTRUCTION ENGINEER

Wade A. Phillips
DISTRICT MATERIALS ENGINEER

Deanna A. [Signature]
DISTRICT OPERATIONS ENGINEER

FILE NAME =	USER NAME = carpenterdj	DESIGNED -	REVISED -	STATE OF ILLINOIS DEPARTMENT OF TRANSPORTATION	GENERAL NOTES	F.A.P. RTE.	SECTION	COUNTY	TOTAL SHEETS	SHEET NO.
366C27-sht-cover.dgn	DRAWN -	REVISED -	317			20 RS-6	IROQUOIS	14	2	
PLOT SCALE = 50,0000' / in.	CHECKED -	REVISED -	CONTRACT NO. 66C27							
PLOT DATE = 3/22/2012	DATE -	REVISED -	ILLINOIS FED. AID PROJECT							
					SCALE: _____	SHEET NO. _____ OF _____ SHEETS		STA. _____ TO STA. _____		

CODE NO.	ITEM	UNIT	TOTAL QUANTITY	CONSTR. CODE	
				IROQUOIS CO.	
				ROADWAY 0005 RURAL	ROADWAY 0005 URBAN
20200100	EARTH EXCAVATION	CU YD	9	8	1
20400800	FURNISHED EXCAVATION	CU YD	39	32	7
25000200	SEEDING, CLASS 2	ACRE	0.14	0.11	0.03
25000400	NITROGEN FERTILIZER NUTRIENT	POUND	14	11	3
25000500	PHOSPHORUS FERTILIZER NUTRIENT	POUND	14	11	3
25000600	POTASSIUM FERTILIZER NUTRIENT	POUND	14	11	3
25100630	EROSION CONTROL BLANKET	SQ YD	702	572	130
25200110	SODDING, SALT TOLERANT	SQ YD	55	53	2
40600100	BITUMINOUS MATERIALS (PRIME COAT)	GALLON	13975	11700	2275
40600300	AGGREGATE (PRIME COAT)	TON	218	183	35
40600400	MIXTURE FOR CRACKS, JOINTS, AND FLANGEWAYS	TON	31.5	26.3	5.2
40600725	POLYMERIZED LEVELING BINDER (HAND METHOD), N50	TON	52	44	8
40600827	POLYMERIZED LEVELING BINDER (MACHINE METHOD), IL 4.75, N50	TON	4390	3682	708
40600895	CONSTRUCTING TEST STRIP	EACH	2	1.7	0.3

80% FED.
20% STATE

* SPECIALTY ITEMS

FILE NAME =	USER NAME = carpenterdj	DESIGNED -	REVISED -	STATE OF ILLINOIS DEPARTMENT OF TRANSPORTATION	SUMMARY OF QUANTITIES	F.A.P. RTE.	SECTION	COUNTY	TOTAL SHEETS	SHEET NO.
ci:\pv_work\pwidot\carpenterdj\40302301\366C27-sht-500-schedule.dgn	DRAWN -	REVISED -	317			20 RS-6	IROQUOIS	14	3	
PLOT SCALE = 50.0000' / in.	CHECKED -	REVISED -	SCALE: _____ SHEET NO. _____ OF _____ SHEETS STA. _____ TO STA. _____							
PLOT DATE = 3/22/2012	DATE -	REVISED -	ILLINOIS FED. AID PROJECT CONTRACT NO. 66C27							

CODE NO.	ITEM	UNIT	TOTAL QUANTITY	CONSTR. CODE	
				IROQUOIS CO.	
				ROADWAY 0005 RURAL	ROADWAY 0005 URBAN
40600990	TEMPORARY RAMP	SQ YD	446	337	109
40601005	HOT-MIX ASPHALT REPLACEMENT OVER PATCHES	TON	135.1	112.6	22.5
40603340	HOT-MIX ASPHALT SURFACE COURSE, MIX "D", N70	TON	8780	7364	1416
40800050	INCIDENTAL HOT-MIX ASPHALT SURFACING	TON	430	356	74
42400100	PORTLAND CEMENT CONCRETE SIDEWALK 4 INCH	SQ FT	872	822	50
42400800	DETECTABLE WARNINGS	SQ FT	136	128	8
44000155	HOT-MIX ASPHALT SURFACE REMOVAL, 1 1/2"	SQ YD	4484	3709	755
44000158	HOT-MIX ASPHALT SURFACE REMOVAL, 2 1/4"	SQ YD	104521	87668	16853
44000500	COMBINATION CURB AND GUTTER REMOVAL	FOOT	124	110	14
44000600	SIDEWALK REMOVAL	SQ FT	872	822	50
44002248	HOT-MIX ASPHALT REMOVAL OVER PATCHES, 12"	SQ YD	201	167.5	33.5
48101200	AGGREGATE SHOULDER, TYPE B	TON	1109	937.6	171.4
60605000	COMBINATION CONCRETE CURB AND GUTTER, TYPE B-6.24	FOOT	14	0	14
60605519	COMBINATION CONCRETE CURB AND GUTTER, TYPE B-6.36	FOOT	110	110	0

80% FED.
20% STATE

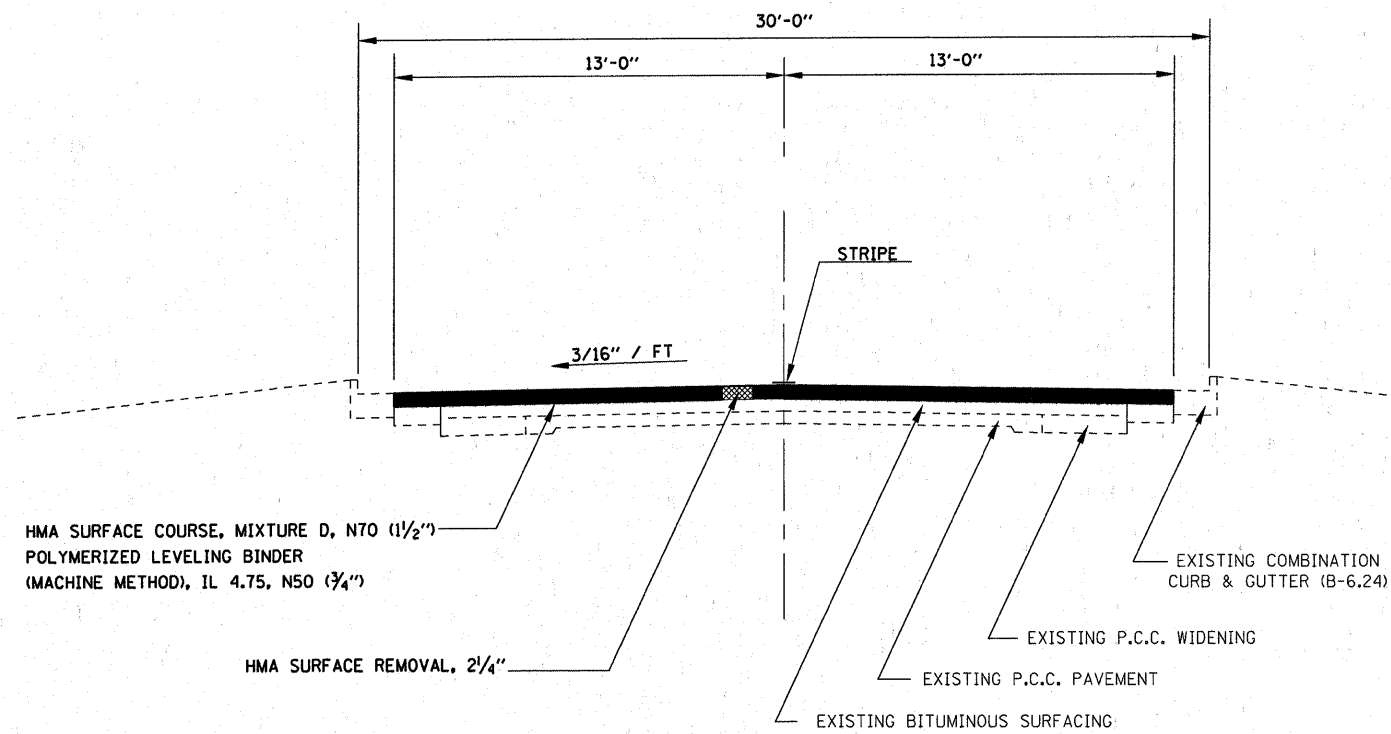
* SPECIALTY ITEMS

FILE NAME =	USER NAME = carpenterdj	DESIGNED -	REVISED -	STATE OF ILLINOIS DEPARTMENT OF TRANSPORTATION	SUMMARY OF QUANTITIES	F.A.P. RTE.	SECTION	COUNTY	TOTAL SHEETS	SHEET NO.	
cr\pv\work\pvidot\carpentard\108302301\366C27-sht-500-schedule.dgn	PLOT SCALE = 50.0000' / in.	DRAWN -	REVISED -			317	20 RS-6	IROQUOIS	14	4	
	PLOT DATE = 3/22/2012	CHECKED -	REVISED -			CONTRACT NO. 66C27					
		DATE -	REVISED -			ILLINOIS FED. AID PROJECT					

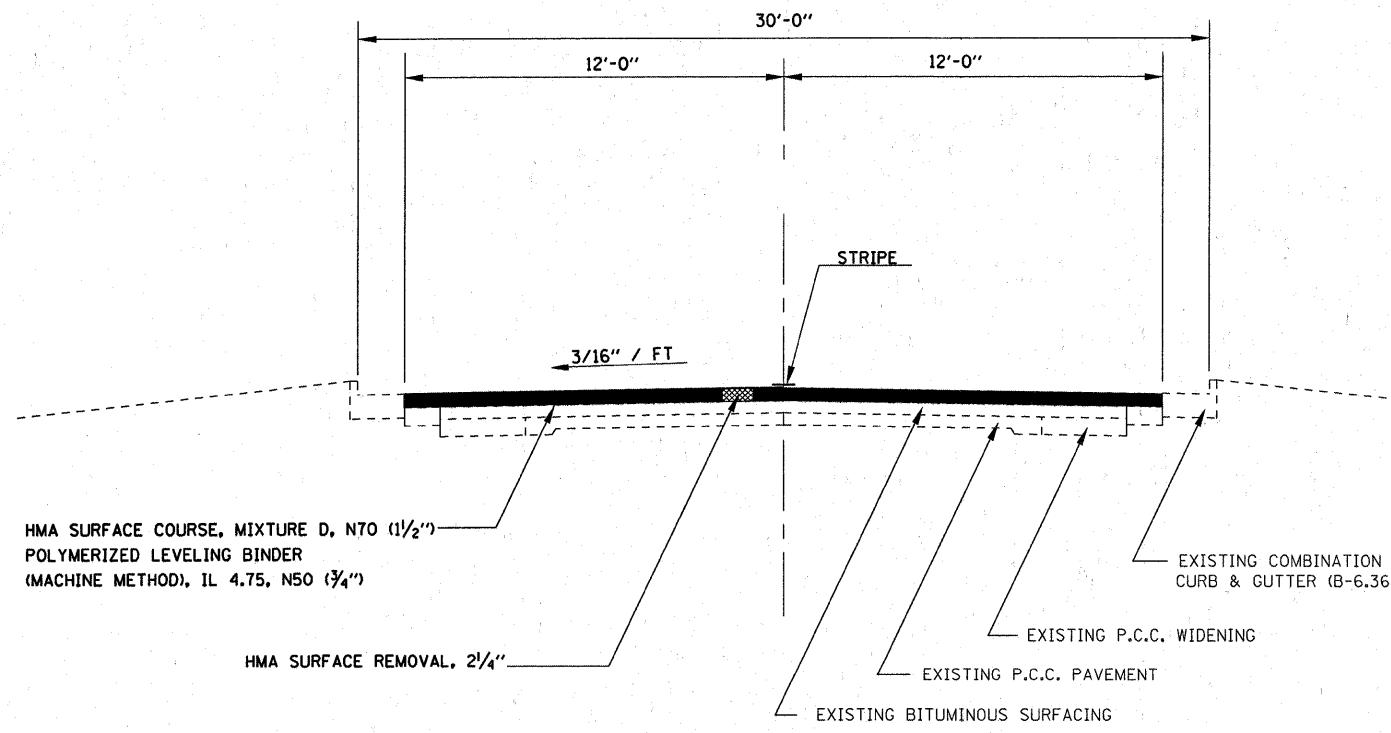
CODE NO.	ITEM	UNIT	TOTAL QUANTITY	CONSTR. CODE	
				IROQUOIS CO.	
				ROADWAY 0005 RURAL	ROADWAY 0005 URBAN
67000400	ENGINEER'S FIELD OFFICE, TYPE A	CAL MO	3	2.6	0.4
67100100	MOBILIZATION	L SUM	1	0.84	0.16
70100450	TRAFFIC CONTROL AND PROTECTION, STANDARD 701201	L SUM	1	0.84	0.16
70100460	TRAFFIC CONTROL AND PROTECTION, STANDARD 701306	L SUM	1	0.84	0.16
70102640	TRAFFIC CONTROL AND PROTECTION, STANDARD 701801	L SUM	1	0.95	0.05
70300100	SHORT-TERM PAVEMENT MARKING	FOOT	9432	7890	1542
70300210	TEMPORARY PAVEMENT MARKING - LETTERS AND SYMBOLS	SQ FT	122.4	0	122.4
70300220	TEMPORARY PAVEMENT MARKING - LINE 4"	FOOT	62249	50551	11698
70300240	TEMPORARY PAVEMENT MARKING - LINE 6"	FOOT	7771	6576	1195
70300280	TEMPORARY PAVEMENT MARKING - LINE 24"	FOOT	264	120	144
70301000	WORK ZONE PAVEMENT MARKING REMOVAL	SQ FT	1047	876	171
78000100	THERMOPLASTIC PAVEMENT MARKING - LETTERS AND SYMBOLS	SQ FT	122.4	0	122.4
78000400	THERMOPLASTIC PAVEMENT MARKING - LINE 6"	FOOT	402	402	0
78000650	THERMOPLASTIC PAVEMENT MARKING - LINE 24"	FOOT	264	120	144

80% FED.
20% STATE

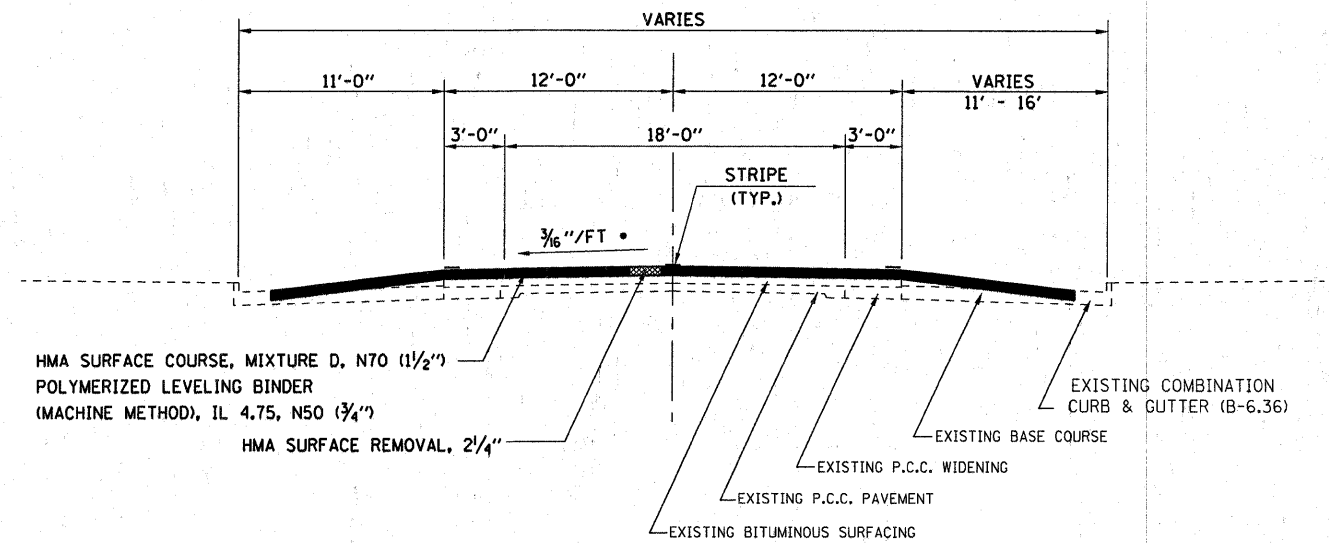
* SPECIALTY ITEMS



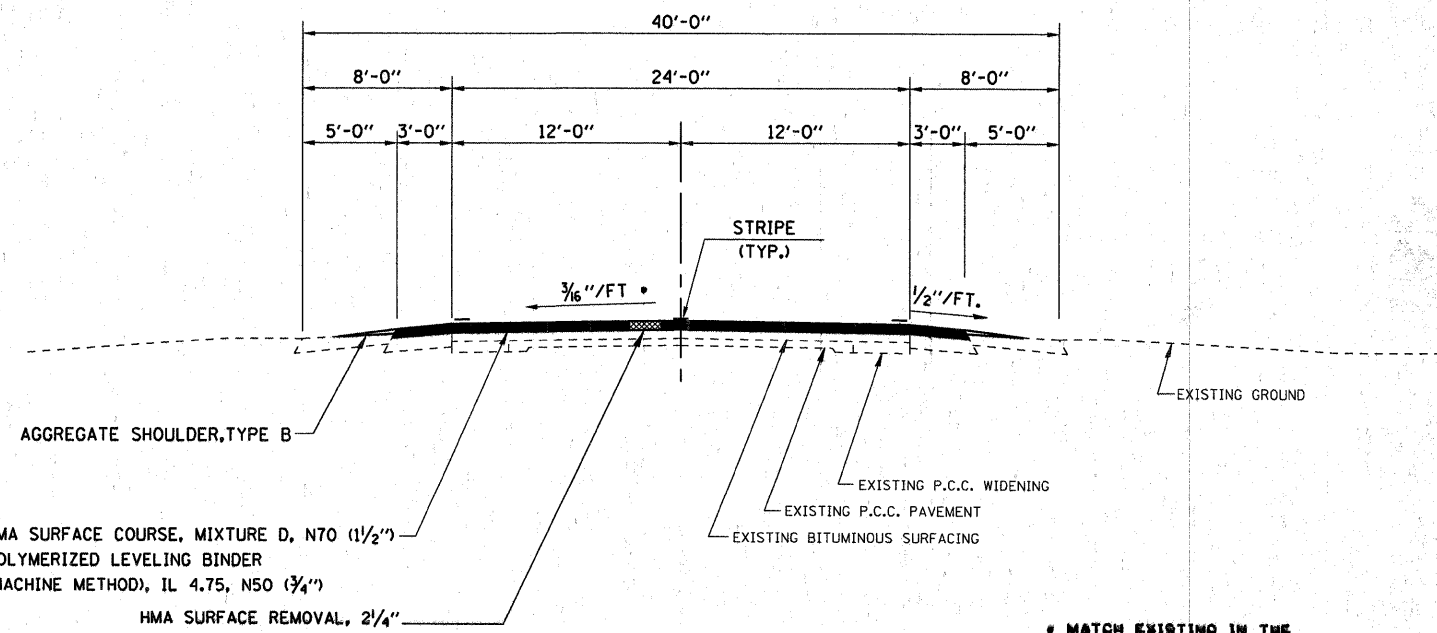
TYPICAL SECTION
STA. 2071+90 TO STA. 2072+62



TYPICAL SECTION
STA. 2072+62 TO STA. 2083+93



TYPICAL SECTION
STA. 2083+93 TO STA. 2087+95



TYPICAL SECTION
STA. 2087+95 TO STA. 2394+15

* MATCH EXISTING IN THE AREAS OF SUPERELEVATION

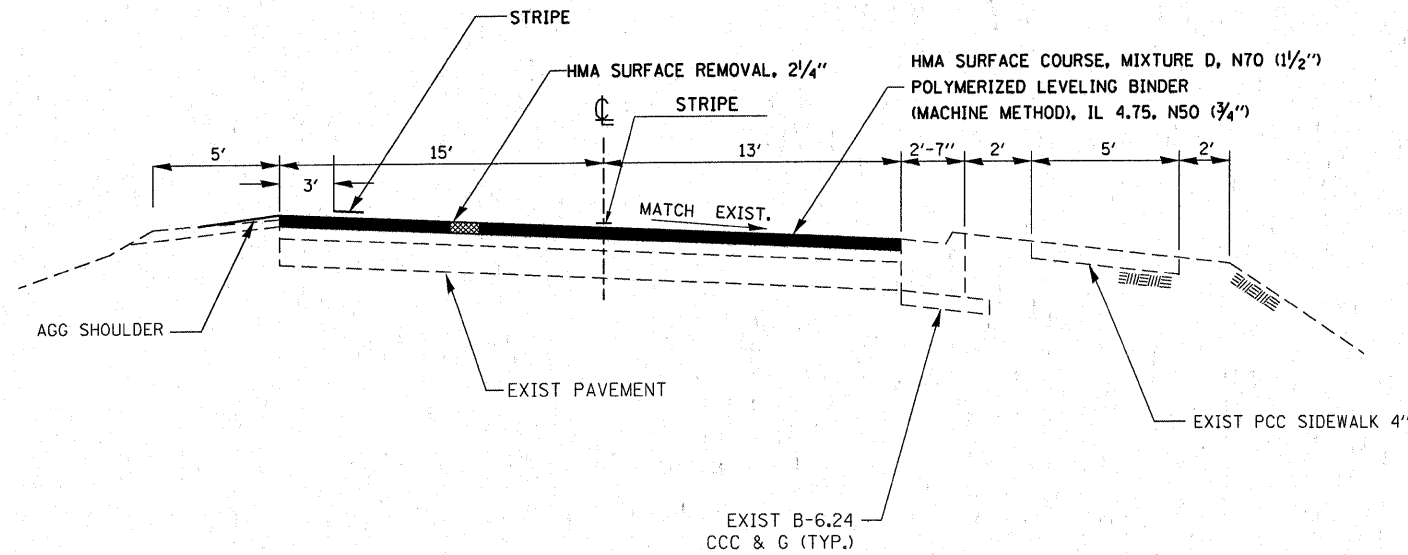
FILE NAME =	USER NAME = carpenterdj	DESIGNED -	REVISED -
c:\pwork\pwork\carpenterd\ad0302301\366C27-sht-typicel.dgn		DRAWN -	REVISED -
PLOT SCALE = 50.0000' / 1"		CHECKED -	REVISED -
PLOT DATE = 3/22/2012		DATE -	REVISED -

**STATE OF ILLINOIS
DEPARTMENT OF TRANSPORTATION**

TYPICALS SECTIONS

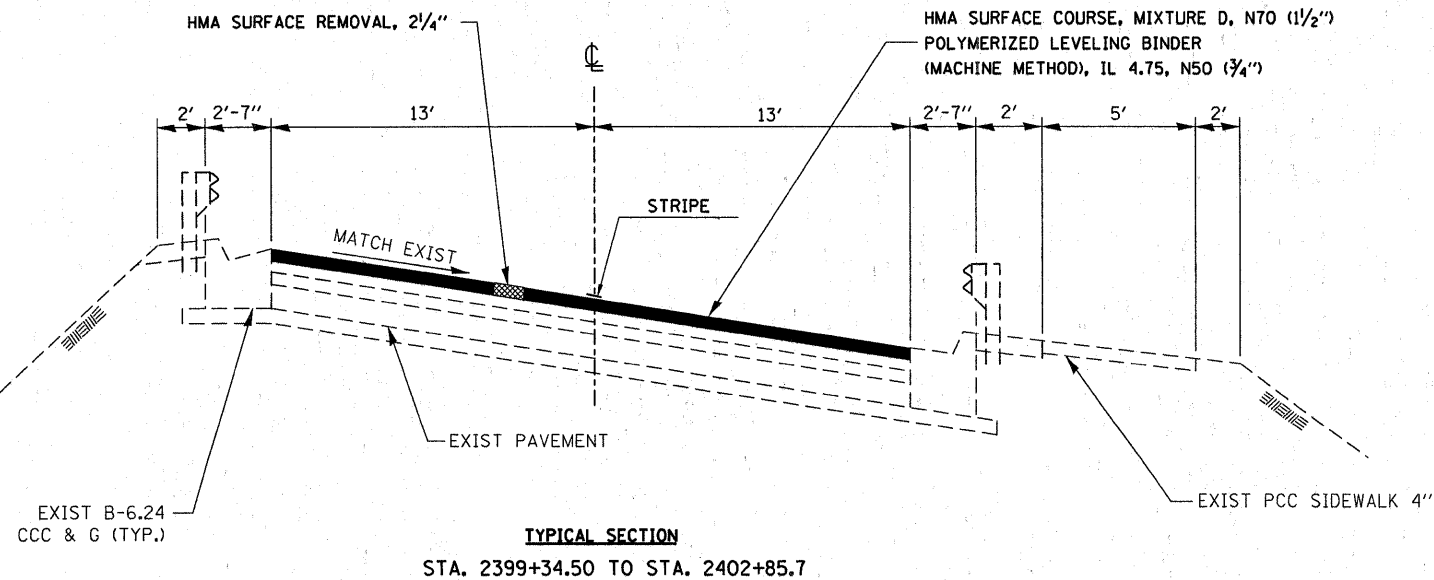
SCALE: _____ SHEET NO. _____ OF _____ SHEETS STA. _____ TO STA. _____

F.A.P. RTE.	SECTION	COUNTY	TOTAL SHEETS	SHEET NO.
317	20 RS-6	IROQUOIS	14	7
ILLINOIS FED. AID PROJECT			CONTRACT NO. 66C27	



TYPICAL SECTION
STA. 2394+15 TO STA. 2399+34.50

MIX DESIGN					
MIX	PG GRADE	DESIGN AIR VOIDS	MIX COMPOSITION	FRICTION AGG	DENSITY CONTROL
HOT-MIX ASPHALT SURFACE COURSE	PG 64-22	4.0% @N70	IL 9.5	MIXTURE D	CORRELATION
HOT-MIX ASPHALT LEVELING BINDER	SBS PG 70-22	4.0% @N60	IL 4.75		CORES/CORRELATION
PATCHING	PG64-22	4.0% @N70	IL 19.0		CORES



TYPICAL SECTION
STA. 2399+34.50 TO STA. 2402+85.7

FILE NAME =	USER NAME = carpentardj	DESIGNED -	REVISED -	STATE OF ILLINOIS DEPARTMENT OF TRANSPORTATION	TYPICAL SECTIONS			F.A.P. RTE.	SECTION	COUNTY	TOTAL SHEETS	SHEET NO.
366C27-sht-typical.dgn	PLOT SCALE = 50.0000' / in.	DRAWN -	REVISED -					317	20 RS-6	IROQUOIS	14	8
PLOT DATE = 3/22/2012	DATE -	CHECKED -	REVISED -		SCALE: _____ SHEET NO. _____ OF _____ SHEETS STA. _____ TO STA. _____			CONTRACT NO. 66C27				
								ILLINOIS FED. AID PROJECT				

MAINLINE SCHEDULE												
LOCATION	DESCRIPTION	LENGTH	AREA	HMA SURF REM 2 1/4"	HMA SURF CSE	LEVEL BINDER (MM)	BIT MATL (PR CT)	AGG (PR CT)	MIX FOR CRACKS, JTS & FLGWYS	LEVEL BINDER (HM)	TEMP RAMP	AGG SHLD TY B
STA.		FOOT	SQ YD	SQ YD	TON	TON	GALLON	TON	TON	TON	SQ YD	TON
RURAL												
2071+90 TO 2072+62		72	208	208.0	17.5	8.7	27.0	0.4	0.1	0.1	21.7	
2072+62 TO 2083+93		1131	3016	3016.0	253.3	128.7	392.1	6.0	0.9	1.5		
2083+93 TO 2087+95		402	2115.8	2115.8	177.7	88.9	275.1	4.2	0.6	1.1		
2087+95 TO 2334+64.31BK		24669.31	82231	82231.0	6907.4	3453.7	10690.0	164.5	24.7	41.1		936.5
2334+70.95AH TO 2335+00		29.05	96.8	96.8	8.1	4.1	12.6	0.2	0.0	0.0		1.1
RURAL SUBTOTALS				87667.6	7364.0	3682.1	11396.8	175.3	26.3	43.8	21.7	937.6
URBAN												
2335+00 TO 2336+71.87		171.87	572.9	572.9	48.1	24.1	74.5	1.1	0.2	0.3	20.0	6.5
2336+71.87 TO 2336+88.01	R.R. OMISSION											
2336+88.01 TO 2370+58.02BK		3370.01	11233.4	11233.4	943.6	471.8	1460.3	22.5	3.4	5.6	20.0	127.9
2387+00.00AH TO 2394+15		715	2383.3	2383.3	200.2	100.1	309.8	4.8	0.7	1.2		27.1
2394+15 TO 2399+34.50		519.5	1616.2	1616.2	135.8	67.9	210.1	3.2	0.5	0.8		9.9
2399+34.50 TO 2402+33.28BK		298.78	863.1	863.1	72.5	36.3	112.2	1.7	0.3	0.4		
2402+21.89AH TO 2402+85.70		63.81	184.3	184.3	15.5	7.7	24.0	0.4	0.1	0.1	21.7	
URBAN SUBTOTALS				16853.2	1415.7	707.9	2190.9	33.7	5.2	8.4	61.7	171.4
TOTALS				104520.8	8779.7	4390	13587.7	209	31.5	52.2	83.4	1109

PATCHING		
	HMA REMOVAL OVER PATCHES, 12"	HMA REPLACEMENT OVER PATCHES
	SQ YD	TON
THROUGHOUT PROJECT		
RURAL	167.5	112.6
URBAN	33.5	22.5
TOTAL	201.0	135.1

SIDEWALK SCHEDULE													
LOCATION	DESCRIPTION	STANDARD NUMBER	SIDEWALK REMOVAL	PCC SIDEWALK 4"	COMB C&G REM	COMB CC&G, TYPE B-6.24	COMB CC&G, TYPE B-6.36	DETECTABLE WARNINGS	SOD SALT TOLERANT	NIT FERT NUT	PHOS FERT NUT	POT FERT NUT	EARTH EXC
STREET			SQ FT	SQ FT	FT	FT	FT	SQ FT	SQ YD	LB	LB	LB	CU YD
RURAL SECTION													
S. COLFAX	SE QUADRANT	424016	40	40	10		10	8	3.56	0.07	0.07	0.07	0.6
N. COLFAX	NE QUADRANT	424001	30	30	10		10	8	2.67	0.05	0.05	0.05	0.4
GRANT ST.	NE QUADRANT	424001	32	32	10		10	8	1.78	0.03	0.03	0.03	0.3
GRANT ST.	SE QUADRANT	424006	100	100	20		20	8	0	0	0	0	0
MAPLE ST.	SW QUADRANT	424001	200	200	40		40	16	2.22	0.04	0.04	0.04	0.4
MAPLE ST.	NW QUADRANT	424001	50	50	10		10	8	2.22	0.04	0.04	0.04	0.4
MAPLE ST.	SE QUADRANT	424001	50	50	10		10	8	4.44	0.08	0.08	0.08	0.7
ASH ST.	SW QUADRANT	424001	40	40				8	4.44	0.08	0.08	0.08	0.7
ASH ST.	SE QUADRANT	424001	40	40				8	4.44	0.08	0.08	0.08	0.7
CHURCH ST.	SW QUADRANT	424001	40	40				8	4.44	0.08	0.08	0.08	0.7
CHURCH ST.	SE QUADRANT	424001	40	40				8	4.44	0.08	0.08	0.08	0.7
BUTLER ST.	SW QUADRANT	424001	40	40				8	4.44	0.08	0.08	0.08	0.7
BUTLER ST.	SE QUADRANT	424001	40	40				8	4.44	0.08	0.08	0.08	0.7
CHESTNUT ST.	SW QUADRANT	424001	40	40				8	4.44	0.08	0.08	0.08	0.7
CHESTNUT ST.	SE QUADRANT	424001	40	40				8	4.44	0.08	0.08	0.08	0.7
RURAL SUBTOTAL			822	822	110	0	110	128	52.41	0.95	0.95	0.95	8.4
URBAN SECTION													
SIDEROAD	SE QUADRANT	424011	50	50	14	14		8	2.22	0.04	0.04	0.04	0.4
URBAN SUBTOTAL			50	50	14	14	0	8	2.22	0.04	0.04	0.04	0.4
TOTALS			872	872	124	14	110	136	54.63	0.99	0.99	0.99	8.8

SEEDING SCHEDULE							
LOCATION		FURN EXC	SEEDING CL 2	EROSION CONTROL BLANKET	NIT FERT NUT	PHOS FERT NUT	POT FERT NUT
		CU YD	ACRE	SQ YD	LB	LB	LB
RURAL							
CHESTNUT STREET	RT	2.9	0.01	52.0	0.9	0.9	0.9
1500 E. ROAD	LT	2.9	0.01	52.0	0.9	0.9	0.9
1500 E. ROAD	RT	2.9	0.01	52.0	0.9	0.9	0.9
1600 E. ROAD	LT	2.9	0.01	52.0	0.9	0.9	0.9
1600 E. ROAD	RT	2.9	0.01	52.0	0.9	0.9	0.9
1700E. ROAD	RT	2.9	0.01	52.0	0.9	0.9	0.9
1800 E. ROAD	LT	2.9	0.01	52.0	0.9	0.9	0.9
1800 E. ROAD	RT	2.9	0.01	52.0	0.9	0.9	0.9
1850 E. ROAD	RT	2.9	0.01	52.0	0.9	0.9	0.9
SIDEROAD	RT	2.9	0.01	52.0	0.9	0.9	0.9
1900 E. ROAD	RT	2.9	0.01	52.0	0.9	0.9	0.9
RURAL SUBTOTAL		31.9	0.11	572	9.9	9.9	9.9
URBAN							
1950 E. ROAD	RT	2.9	0.01	52	0.9	0.9	0.9
1840 N. ROAD	LT	2.9	0.01	52	0.9	0.9	0.9
SIDEROAD	RT	1.4	0.01	26	0.9	0.9	0.9
URBAN SUBTOTAL		7.2	0.03	130	2.7	2.7	2.7
TOTALS		39.1	0.14	702	12.6	12.6	12.6

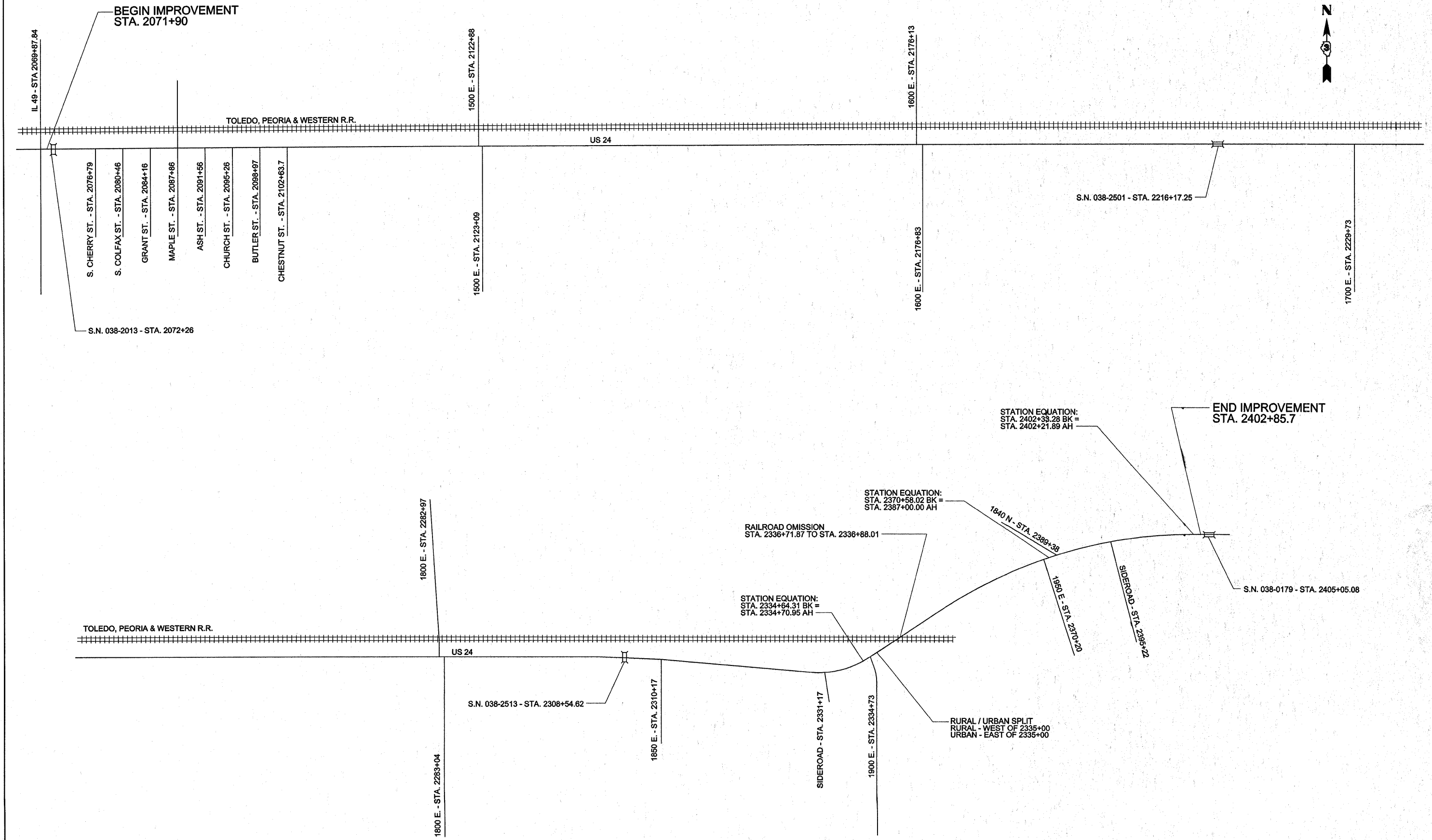
SIDEROAD SCHEDULE												
LOCATION	SIDE	TYPE	DESCRIPTION	WIDTH	LENGTH	AREA	HMA SURF REM 1-1/2"	INC HMA SURFACE	BIT MATL (PR CT)	AGG (PR CT)	TEMP RAMP	
STA					FOOT	SQ YD	SQ YD	TON	GALLON	TON	SQ YD	
RURAL												
2076+79	RT	HMA	S. CHERRY STREET	32	38	178.1	178.1	15.0	14.2	0.36	17.8	
2080+46	RT	HMA	S. COLFAX STREET	24	36	139.0	139.0	11.7	11.1	0.28	13.3	
2084+16	RT	HMA	GRANT STREET	40	21	93.3	93.3	7.8	7.5	0.19	22.2	
2084+16	LT	HMA	GRANT STREET	40	22	97.8	97.8	8.2	7.8	0.20	22.2	
2087+86	RT	HMA	MAPLE STREET	20	22	91.8	91.8	7.7	7.3	0.18	11.1	
2087+86	LT	HMA	MAPLE STREET	30	39.5	251.0	251.0	21.1	20.1	0.50	16.7	
2091+56	RT	HMA	ASH STREET	24	30	123.0	123.0	10.3	9.8	0.25	13.3	
2095+26	RT	HMA	CHURCH STREET	24	30	111.0	111.0	9.3	8.9	0.22	13.3	
2098+97	RT	HMA	BUTLER STREET	24	30	123.0	123.0	10.3	9.8	0.25	13.3	
2102+63.7	RT	HMA	CHESTNUT STREET	27	30	133.0	133.0	11.2	10.6	0.27	15.0	
2106+18	RT	HMA/AGG	CE	18	10	31.1	31.1	2.6	2.5	0.06		
2113+58	RT	EARTH	FE	24								
2122+88	LT	HMA	1500 E. ROAD	30	30	219.3	219.3	18.4	17.5	0.44	16.7	
2123+09	RT	HMA	1500 E. ROAD	30	30	219.3	219.3	18.4	17.5	0.44	16.7	
2136+50	RT		PE	24	10	37.8		3.2	3.0	0.08		
2156+51	RT	HMA/AGG	PE	14	10	26.7		2.2	2.1	0.05		
2163+44	LT	HMA/AGG	PE	14	10	26.7		2.2	2.1	0.05		
2176+13	LT	HMA	1600 E. ROAD	30	30	219.3	219.3	23.3	17.5	0.44	16.7	
2176+83	RT	HMA	1600 E. ROAD	30	30	219.3	219.3	23.3	17.5	0.44	16.7	
2193+16	LT	HMA/AGG	PE	16	10	28.9	28.9	2.4	2.3	0.06		
2203+01	RT	EARTH	FE	24								
2203+41	RT	HMA	PE	15	10	27.8	27.8	2.3	2.2	0.06		
2206+42	RT	HMA	CE	35	10	50.0	50.0	4.2	4.0	0.10		
2207+95	RT	HMA	CE	24	10	37.8	37.8	3.2	3.0	0.08		
2221+80	RT	EARTH	FE	24								
2229+27	LT	EARTH	FE	24								
2229+73	RT	HMA	1700E. ROAD	30	30	219.3	219.3	23.3	17.5	0.44	16.7	
2238+98	RT	EARTH	FE	24								
2248+31	LT	HMA/AGG	PE	14	10	26.7	26.7	2.2	2.1	0.05		
2248+97	RT	EARTH	FE	24								
2268+77	RT	EARTH	FE	24								
2282+97	LT	HMA	1800 E. ROAD	15	30	169.3	169.3	18.0	13.5	0.34	8.3	
2283+04	RT	HMA	1800 E. ROAD	30	30	219.3	219.3	23.3	17.5	0.44	16.7	
2304+31	LT	EARTH	FE	24								
2310+17	RT	HMA	1850 E. ROAD	30	30	219.3	219.3	23.3	17.5	0.44	16.7	
2322+05	RT	HMA/AGG	PE	14	10	26.7	26.7	2.2	2.1	0.05		
2324+68	RT	HMA/AGG	PE	14	10	26.7	26.7	2.2	2.1	0.05		
2328+20	RT	HMA	CE	30	10	44.4	44.4	3.7	3.6	0.09		
2331+17	RT	HMA	SIDEROAD	24	30	161.1	161.1	17.1	12.9	0.32	13.3	
2334+73	RT	HMA	1900 E. ROAD	34	30	202.2	202.2	21.5	16.2	0.40	18.9	
RURAL SUBTOTAL							3708.8	355.7	303.3	7.62	315.6	
URBAN												
2343+43	RT	HMA	CE	30	10	44.4	44.4	3.7	3.6	0.09		
2346+17	RT	HMA	CE	35	10	50.0	50.0	4.2	4.0	0.10		
2358+66	RT	HMA/AGG	CE	14	10	26.7	26.7	2.2	2.1	0.05		
2362+00	RT	HMA	CE	30	10	44.4	44.4	3.7	3.6	0.09		
2362+64	RT	HMA	CE	30	10	44.4	44.4	3.7	3.6	0.09		
2370+20	RT	HMA	1950 E. ROAD	30	30	143.0	143.0	15.2	18.6	0.30	13.3	
2388+17	RT	HMA	PE	16	10	28.9	28.9	2.4	2.3	0.06		
2389+38	LT	HMA	1840 N. ROAD	40	30	176.3	176.3	18.8	22.9	0.40	17.8	
2393+92	RT	HMA	CE	24	10	37.8	37.8	3.2	3.0	0.08		
2394+04	LT	EARTH	FE	24	10							
2395+22	RT	HMA	SIDEROAD	35	30	159.6	159.6	17.0	20.7	0.30	15.6	
URBAN SUBTOTALS							755.5	74.2	84.4	1.56	46.7	
TOTALS							4464.3	429.9	387.7	9.2	362.3	

NOTE: DO NOT RESURFACE ENTRANCES BEHIND CURB AND GUTTER OR CONCRETE ENTRANCES IN CRESCENT CITY

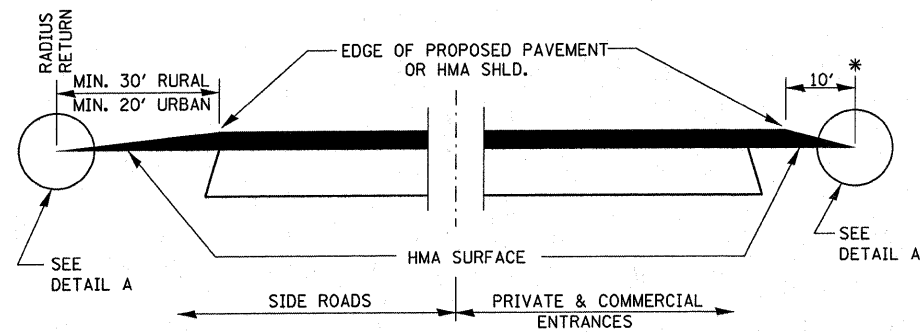
PAVEMENT MARKING										
LOCATION	DESCRIPTION	LENGTH	PAINT PAVEMENT MARKING LINE			THERMOPLASTIC PAVEMENT MARKING LINE			RAISED REFL PVMT MARKER REMOVAL EACH	RAISED REFL PVMT MARKER EACH
			4 INCH		6 INCH	6 INCH	24 INCH	LETTERS & SYMBOLS SQ FT		
			YELLOW FOOT	WHITE FOOT	YELLOW FOOT	YELLOW FOOT	YELLOW FOOT			
STA		FOOT								
RURAL										
AT IL 49 INTERSECTION	STOP BARS	72					120			
2071+90 TO 2072+62		1131					18		1	
2072+62 TO 2083+93		402					283		14	
2083+93 TO 2087+95		24669.31		1608	12334		101		5	
2087+95 TO 2334+64.31BK		29.05	700	98678	14				308	
2334+70.95AH TO 2335+00				116					0	
RURAL SUBTOTALS			700	100402	12348	402	120	0	328	
URBAN										
2335+00 TO 2336+71.87		171.87	344	688	86		72	61.2	2	
2336+71.87 TO 2336+88.01	R.R. OMISSION									
2336+88.01 TO 2370+58.02BK		3370.01	1224	13480	1686		72	61.2	42	
2387+00.00AH TO 2394+15		715	230	2860	358				9	
2394+15 TO 2399+34.50		519.5	1040	1040	260				6	
2399+34.50 TO 2402+33.28BK		298.78	1196						4	
2402+21.89AH TO 2402+85.70		63.81	256						1	
URBAN SUBTOTALS			4290	18068	2390	0	144	122.4	64	
TOTALS			123460	14738	402	264	122.4	392	392	

NOTE: ADDITIONAL QUANTITY HAS BEEN INCLUDED TO ALLOW FOR TWO SEPARATE APPLICATIONS OF PAINT PAVEMENT MARKING LINE
NO PASSING ZONES SHALL BE REPLACED IN THE SAME LOCATIONS AS EXISTING

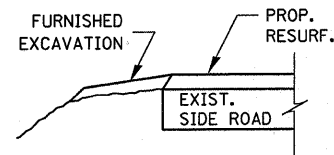
TEMPORARY PAVEMENT MARKING									
LOCATION	DESCRIPTION	LENGTH	TEMPORARY PAVEMENT MARKING LINE				TEMP PVMT MARKING LETTERS & SYMBOLS SQ FT	SHORT TERM PAVEMENT MARKING FOOT	WORK ZONE PVMT MARK REMOVAL SQ FT
			4 INCH		6 INCH	24 INCH			
			YELLOW FOOT	WHITE FOOT	YELLOW FOOT	YELLOW FOOT			
STA		FOOT							
RURAL									
AT IL 49 INTERSECTION	STOP BARS	72					120		
2071+90 TO 2072+62		1131					18		2
2072+62 TO 2083+93		402					283		38
2083+93 TO 2087+95		24669.31		804	101				13
2087+95 TO 2334+64.31BK		29.05	350	49339	6167				7401
2334+70.95AH TO 2335+00				58	7				9
RURAL SUBTOTALS			350	50201	6576	120	0	7890	876
URBAN									
2335+00 TO 2336+71.87		171.87	172	344	43	72	61.2	51	6
2336+71.87 TO 2336+88.01	R.R. OMISSION								
2336+88.01 TO 2370+58.02BK		3370.01	612	6740	843	72	61.2	1011	112
2387+00.00AH TO 2394+15		715	115	1430	179			216	24
2394+15 TO 2399+34.50		519.5	520	1039	130			156	17
2399+34.50 TO 2402+33.28BK		298.78	598					90	10
2402+21.89AH TO 2402+85.70		63.81	128					18	2
URBAN SUBTOTALS			2145	9553	1195	144	122.4	1542	171
TOTALS			62249	7771	264	122.4	9432	1047	



FILE NAME =	USER NAME = carpentardj	DESIGNED -	REVISD -	STATE OF ILLINOIS DEPARTMENT OF TRANSPORTATION	PROJECT LAYOUT			F.A.P. RTE.	SECTION	COUNTY	TOTAL SHEETS	SHEET NO.
ci:\pw_work\pwidot\carpentardj\d0302301\366C27-sht-Layout-ATB.dgn	PLOT SCALE = 50.0000' / in.	DRAWN -	REVISD -					317	20 RS-6	IROQUOIS	14	12
PLOT DATE = 3/22/2012	DATE -	CHECKED -	REVISD -		SCALE: _____ SHEET _____ OF _____ SHEETS STA. _____ TO STA. _____			CONTRACT NO. 66C27				
					ILLINOIS FED. AID PROJECT							

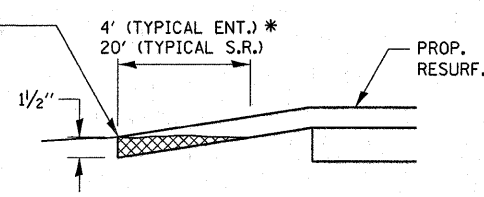


SECTION A-A
DETAILS AT ENTRANCES & SIDE ROADS

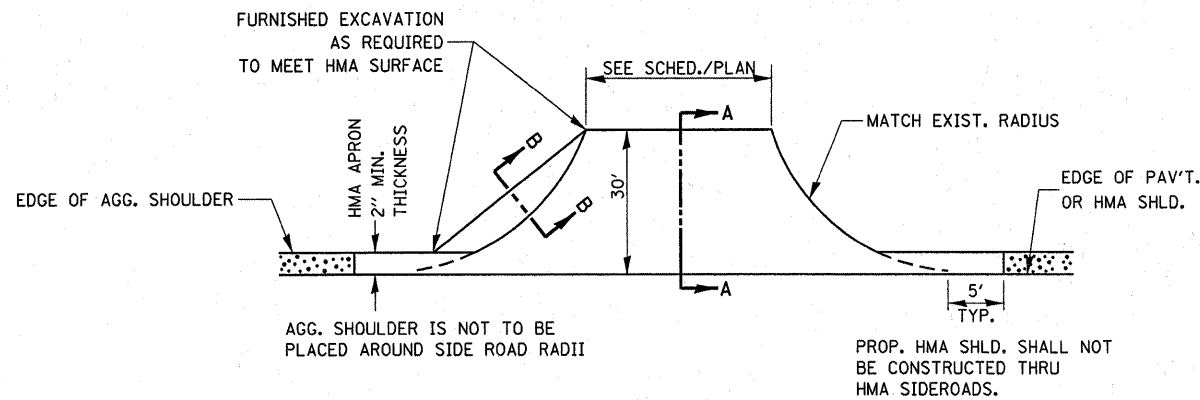


SECTION B-B

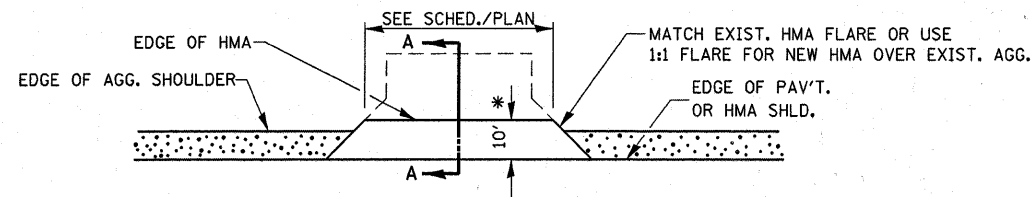
THE COST OF REMOVAL AT EXISTING HMA OR P.C.C. LOCATIONS SHALL BE PAID FOR PER SQ. YD. BY THE APPROPRIATE PAY ITEM. REMOVAL AT THE EXISTING AGG. LOCATIONS SHALL BE INCIDENTAL TO THE HMA. A-3 LOCATIONS SHALL BE FEATHER TAPERED.



DETAIL A



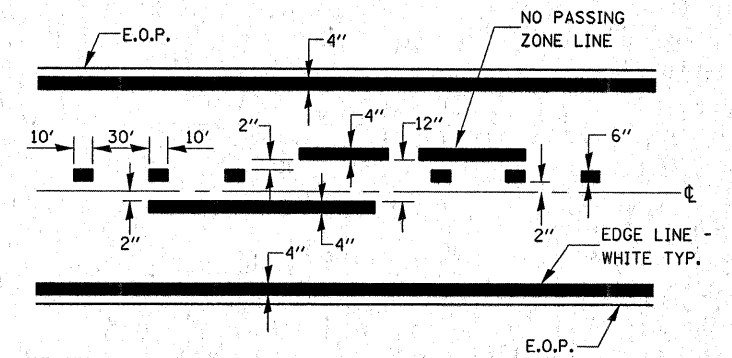
PLAN AT SIDE ROADS



PLAN AT PRIVATE & COMMERCIAL ENTRANCES

(DO NOT RESURFACE FIELD ENTRANCES)

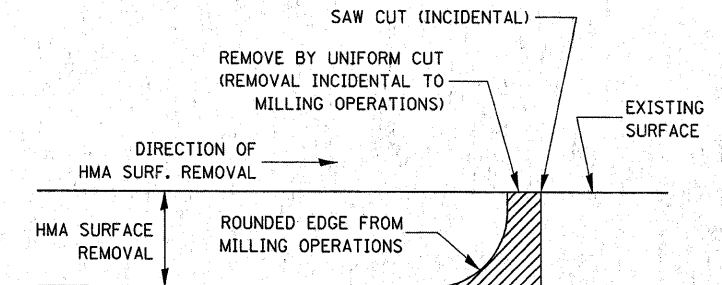
* PROPOSED HMA RESURFACING AT PUBLIC EDUCATIONAL FACILITY ENTRANCES SHALL BE EXTENDED TO THE RIGHT-OF-WAY LIMITS.



CENTERLINE & NO PASSING ZONE LINES - YELLOW

(SEE TYPICAL SECTIONS)

PAVEMENT MARKING

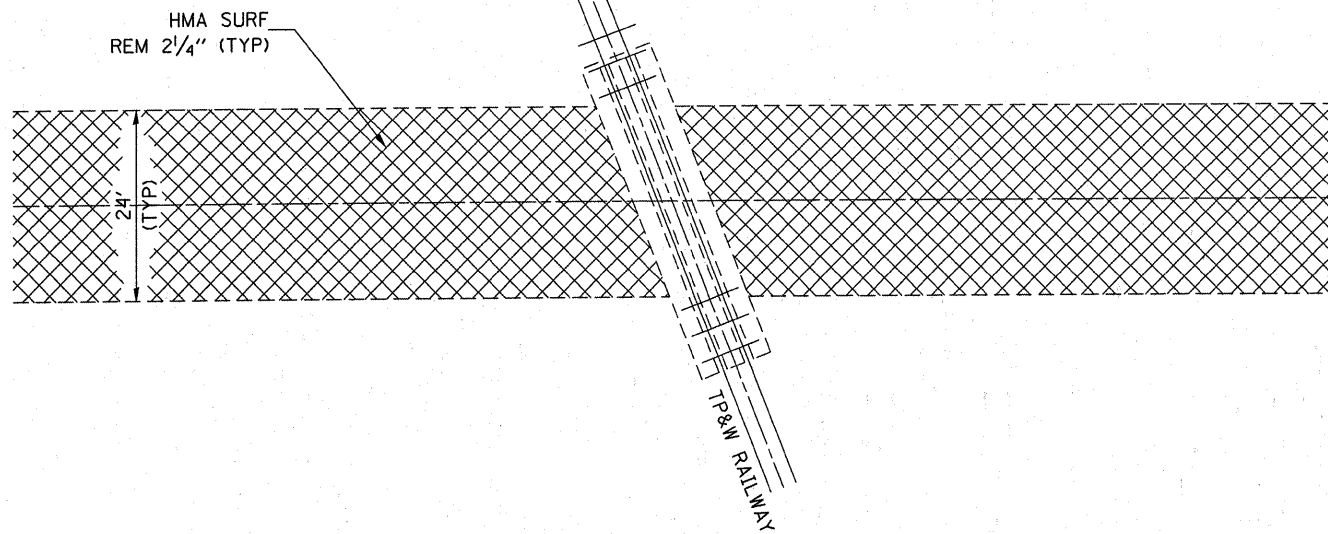


NOTE:

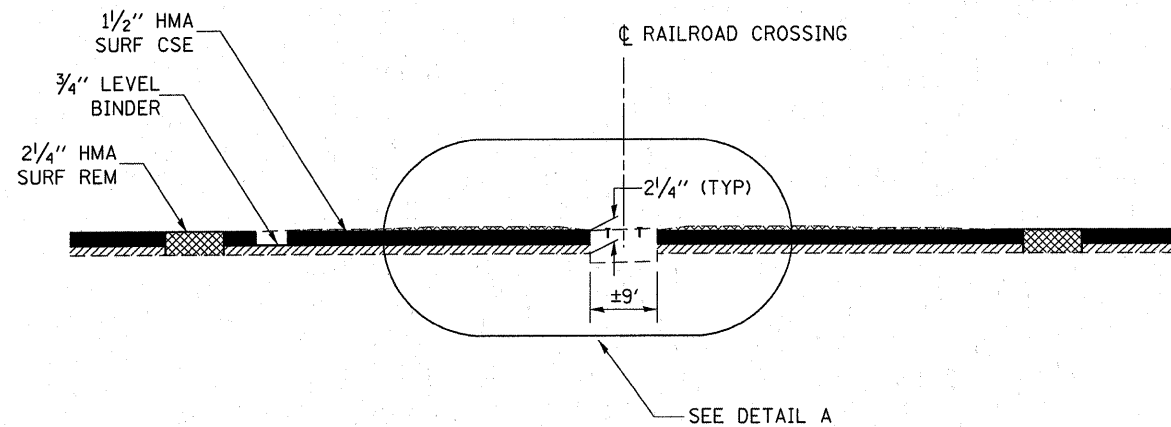
WHEN MILLING OPERATIONS PRODUCE A ROUNDED EDGE, THEN A SAW CUT SHALL BE USED TO MANUFACTURE A PERPENDICULAR EDGE AS SHOWN IN THE DETAIL. THE ENGINEER SHALL BE THE SOLE JUDGE CONCERNING THE USE OF THIS DETAIL.

HMA DETAIL AT BUTT JOINTS

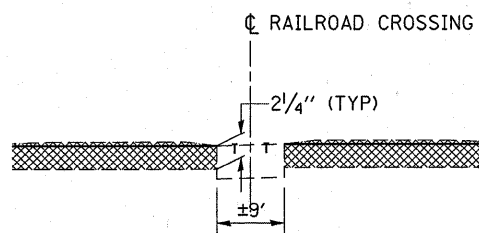
FILE NAME =	USER NAME = carpenterdj	DESIGNED -	REVISED -	STATE OF ILLINOIS DEPARTMENT OF TRANSPORTATION	DETAILS		F.A.P. RTE. 317	SECTION 20 RS-6	COUNTY IROQUOIS	TOTAL SHEETS 14	SHEET NO. 13	
c:\pw_work\pwsdot\carpenterdj\0302301\366C27-shd-detail.dgn		DRAWN -	REVISED -		SCALE: _____	SHEET NO. _____ OF _____ SHEETS	STA. _____ TO STA. _____	CONTRACT NO. 66C27				
		CHECKED -	REVISED -		ILLINOIS FED. AID PROJECT							
		DATE -	REVISED -									



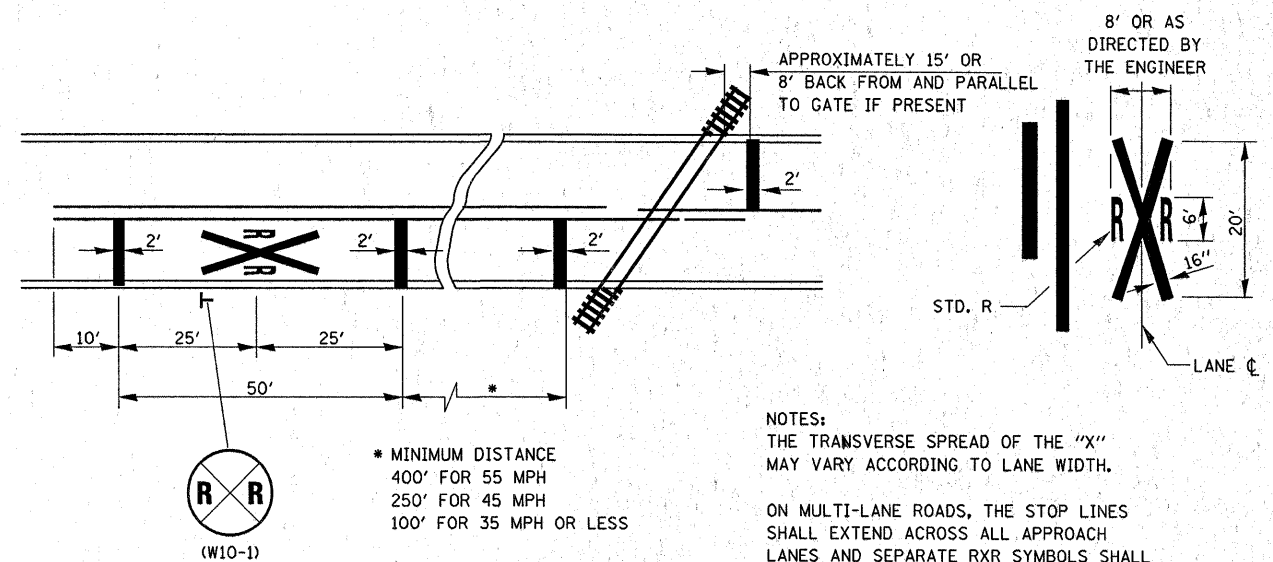
**PLAN VIEW AT THE US 24 - TP&W RAILWAY
GRADE CROSSING**
(DOT/AAR NO. 801 605 Y)



**MILLING DETAIL AT THE US 24 AND TP&W RAILWAY
GRADE CROSSING**
(DOT/AAR NO. 801 605 Y)



DETAIL A



**PAVEMENT MARKINGS AT
RAILROAD-HIGHWAY GRADE CROSSING**

NOTES:
THE TRANSVERSE SPREAD OF THE "X" MAY VARY ACCORDING TO LANE WIDTH.
ON MULTI-LANE ROADS, THE STOP LINES SHALL EXTEND ACROSS ALL APPROACH LANES AND SEPARATE RXR SYMBOLS SHALL BE PLACED ADJACENT TO EACH OTHER IN EACH LANE.
WHEN THE PAVEMENT MARKING SYMBOL IS USED, A PORTION OF THE SYMBOL SHOULD BE LOCATED DIRECTLY ADJACENT TO THE ADVANCE WARNING SIGN (W10-1).

FILE NAME =	USER NAME = carpenterdj	DESIGNED -	REVISED -	STATE OF ILLINOIS DEPARTMENT OF TRANSPORTATION	DETAILS		F.A.P. RTE.	SECTION	COUNTY	TOTAL SHEETS	SHEET NO.
c:\pwork\pwsdot\carpenterdj\d0302381\386C27-sh1t-details.dgn	DRAWN -	REVISED -	REVISED -		317	20 RS-6	IROQUOIS	14	14		
PLOT SCALE = 50.0000' / 1"	CHECKED -	REVISED -	REVISED -		SCALE: _____ SHEET NO. _____ OF _____ SHEETS STA. _____ TO STA. _____		CONTRACT NO. 66C27		ILLINOIS FED. AID PROJECT		
PLOT DATE = 3/22/2012	DATE -	REVISED -	REVISED -								