

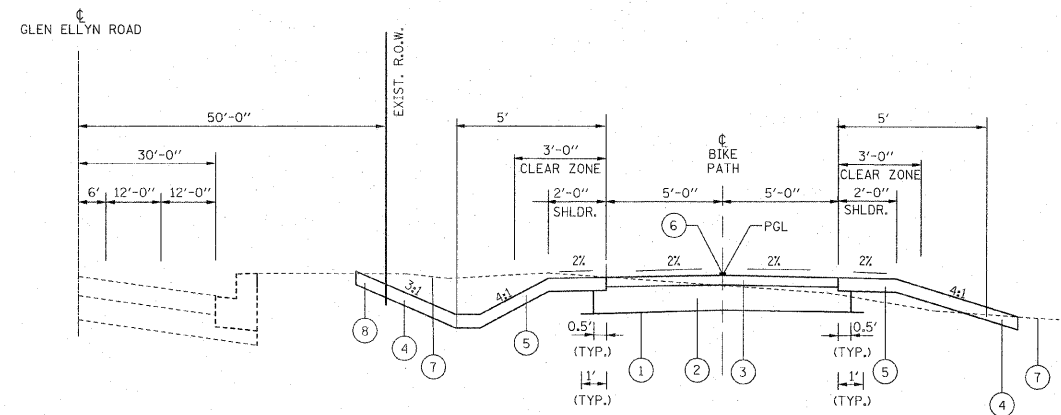
EXISTING TYPICAL SECTION

HOT-MIX ASPHALT MIXTURE REQUIREMENTS

ITEM	AIR Voids @ NDES
HOT-MIX ASPHALT SURFACE COURSE MIX "D", NSO (IL 9.5mm; 2")	4% @ 50 Gyr.

THE UNIT WEIGHT USED TO CALCULATE ALL HMA SURFACE MIXTURE QUANTITIES IS 112 LBS/SQ YD/IN

THE "AC TYPE" FOR POLYMERIZED HMA MIXES SHALL BE "SBS/SBR PG 76-22" FOR NON-POLYMERIZED HMA THE "AC TYPE" SHALL BE "PG 64-22" UNLESS MODIFIED BY DISTRICT ONE SPECIAL PROVISIONS. FOR "PERCENT OF RAP" SEE DISTRICT ONE SPECIAL PROVISIONS.



PROPOSED TYPICAL SECTION

**GLEN ELLYN ROAD
STA. 100+08.13 TO 111+59.77
AND STA. 112+80.00 TO 119+79.16**

LEGEND

- ① GEOTECHNICAL FABRIC FOR GROUND STABILIZATION
- ② AGGREGATE BASE COURSE, TYPE B, 8"
- ③ 2" HOT MIX ASPHALT SURFACE COURSE, MIX "D", NSO
- ④ TOP SOIL FURNISH AND PLACE 6", SEEDING, PRAIRIE AND SAVANNA
- ⑤ TOP SOIL FURNISH AND PLACE 6", TRI-TALL FESCUE SEED MIX AND TRI-BLEN RYE SEED MIX
- ⑥ PAINT PAVEMENT MARKINGS - LINE 4", YELLOW
- ⑦ EXISTING GROUND
- ⑧ TOP SOIL FURNISH AND PLACE 6", SEEDING, CLASS 2A

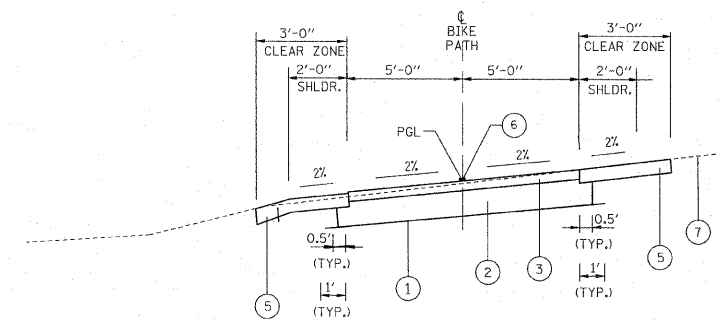
NOTE 1: THE EXCAVATED MATERIAL CAN BE EITHER UNSUITABLE OR UNSTABLE MATERIAL WHICH IS TO BE DETERMINED BY THE ENGINEER AT THE TIME OF CONSTRUCTION. UNDERCUT DEPTHS ARE NOT A STANDARD 12 INCHES, DEPTHS OF THE UNDERCUTS SHALL BE DETERMINED BY THE ENGINEER DURING CONSTRUCTION.

NOTE 2: GEOTECHNICAL FABRIC AND GROUND STABILIZATION SHALL BE ONLY USED IN AREAS RECOMMENDED OR AS DETERMINED AT THE TIME OF CONSTRUCTION, BOTH AS DETERMINED BY THE ENGINEER.

NOTE 3: PORTLAND CEMENT CONCRETE SIDEWALK 6" SHOULD BE PLACED ON LOCATIONS ACCORDING TO DETAIL ON SHEET NO. 8

NOTE 4: WHERE CROSS DRAINAGE ACROSS THE PATH IS SHOWN ON THE CROSS SECTIONS, THE CONTRACTOR SHALL PROVIDE A CONSTANT CROSS SLOPE IN THE DIRECTION OF THE GROUND SLOPE.

NOTE 5: THE PRAIRIE SEED MIX AND SAVANNA SEED MIX ARE FOR DISTURBED AREAS OUTSIDE OF THE SHOULDER AND FRONT SLOPE AREA.



PROPOSED TYPICAL SECTION

**GLEN ELLYN ROAD
(JUST EAST OF EAST BRANCH FOREST PRESERVE ENTRANCE)
STA. 111+79.23 TO 112+80**

FILE NAME = #FILES#



USER NAME = #USER#	DESIGNED <i>JIF</i>	REVISED -
PLOT SCALE = #SCALE#	DRAWN <i>KJB</i>	REVISED -
PLOT DATE = #DATE#	CHECKED <i>DDL</i>	REVISED -
#TIME#	DATE <i>4/10/12</i>	REVISED -

**ILLINOIS DEPARTMENT OF TRANSPORTATION
DIVISION OF HIGHWAYS**

TYPICAL SECTIONS

SHEET NO. 1 OF 1 SHEETS

F.A.P. RTE.	SECTION	COUNTY	TOTAL SHEETS	SHEET NO.
	08-F3000-10-BT	DUPAGE	20	4
CONTRACT NO. 63710				
FED. ROAD DIST. NO. 1 ILLINOIS FED. AID PROJECT				