

PROGRAM AND OFFICE ENGINEER: CHARLES F. RIDDLE, P.E. 847-705-4406, SCHAUMBURG, IL

F.A. RTE.	SECTION	COUNTY	TOTAL SHEETS	SHEET NO.
	08-F3000-10-BT	DUPAGE	20	1
FED. ROAD DIST. NO.	ILLINOIS	CONTRACT NO. 63710		
JUNE 2012 LETTING				

INDEX OF SHEETS

SHEET NO.	DESCRIPTION
1	COVER
2	GENERAL NOTES AND STANDARDS
3	SUMMARY OF QUANTITIES / SCHEDULES
4	TYPICAL SECTIONS
5-6	PROPOSED PLAN & PROFILE
7-9	CONSTRUCTION DETAILS AND STANDARDS
10-12	DISTRICT ONE STANDARDS
13-20	CROSS SECTIONS

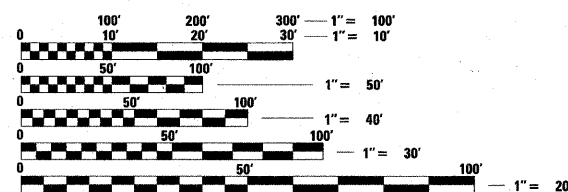
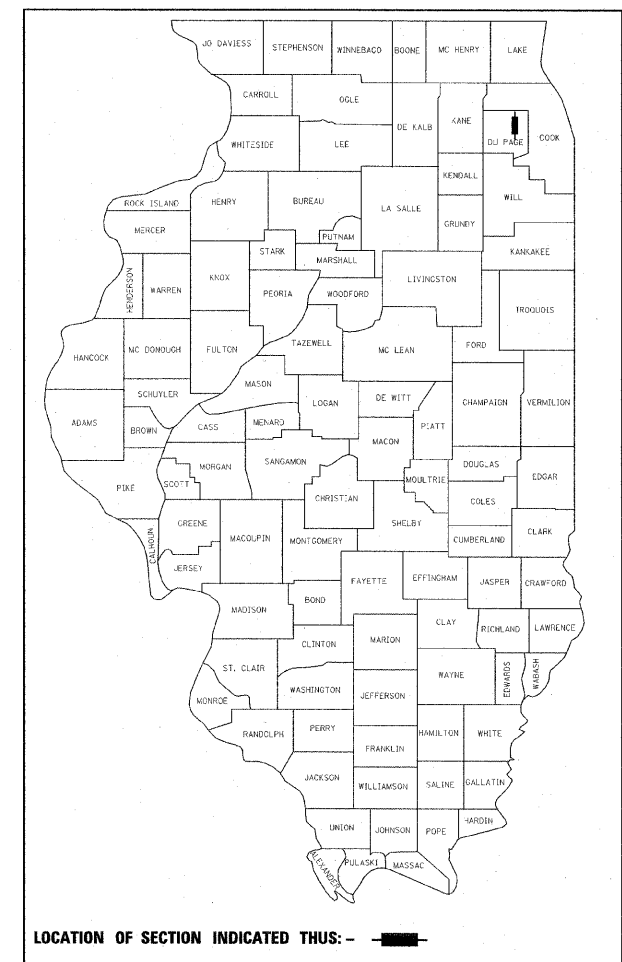
PROJECT LOCATED IN VILLAGE OF GLENDALE HEIGHTS

DESIGN SPEED
20 MPH

CLASSIFICATION
BIKE TRAIL

SPONSORING AGENCY
FOREST PRESERVE DISTRICT OF DUPAGE COUNTY

STATE OF ILLINOIS
DEPARTMENT OF TRANSPORTATION
DIVISION OF HIGHWAYS
PLANS FOR PROPOSED
FEDERAL AID PROJECT
GLEN ELLYN ROAD BIKE TRAIL
GREGORY AVENUE TO NOW FOODS DRIVEWAY
SECTION NO. 08-F3000-10-BT
PROJECT NO. SRTS-4008(027)
FOREST PRESERVE DISTRICT OF DUPAGE COUNTY
DUPAGE COUNTY
JOB NO: C-91-008-08

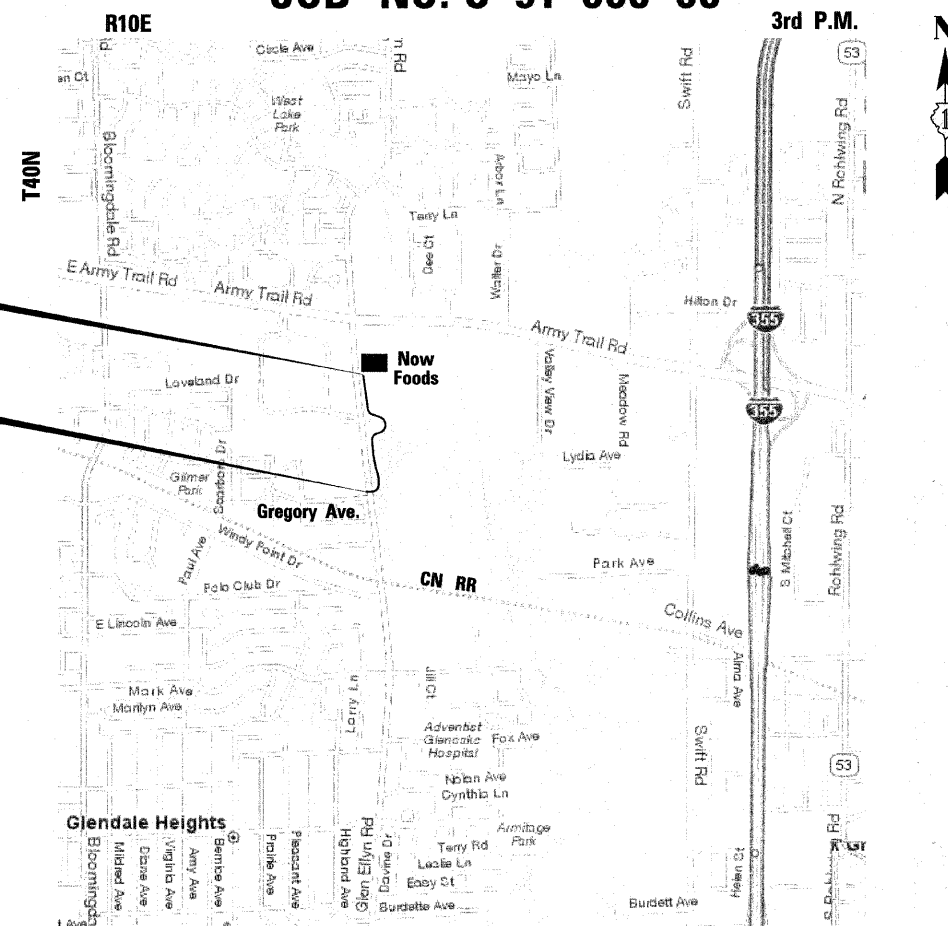


FULL SIZE PLANS HAVE BEEN PREPARED USING STANDARD ENGINEERING SCALES. REDUCED SIZED PLANS WILL NOT CONFORM TO STANDARD SCALES. IN MAKING MEASUREMENTS ON REDUCED PLANS, THE ABOVE SCALES MAY BE USED.

J.U.L.I.E.
JOINT UTILITY LOCATION INFORMATION FOR EXCAVATION
1-800-892-0123 (JULIE)
OR 811

PROJECT ENDS STA. 120+05.68

PROJECT BEGINS STA. 100+00



Bloomingdale Township LOCATION MAP (NOT TO SCALE)

GROSS LENGTH AND NET LENGTH = 2,075.68 FEET (0.39 MILES)

LICENSED PROFESSIONAL ENGINEER
DAVID D. LANDEWEER
062.042363
STATE OF ILLINOIS
[Signature]
4/10/12
DATE
LICENSE EXPIRES 11/30/2013

STATE OF ILLINOIS
DEPARTMENT OF TRANSPORTATION
DIVISION OF HIGHWAYS

Approved April 4, 2012
[Signature]
FOREST PRESERVE DISTRICT OF DUPAGE COUNTY

Passed APRIL 10, 2012
[Signature] C. HOLT
DISTRICT #1 ENGINEER OF LOCAL ROADS AND STREETS

Releasing for Bid Based on Limited Review APRIL 10, 2012
[Signature] Diane M. O'Keefe
DEPUTY DIRECTOR OF HIGHWAYS, REGION #1 ENGINEER

PRINTED BY THE AUTHORITY OF THE STATE OF ILLINOIS

PLANS PREPARED BY:
URS
100 SOUTH WACKER DRIVE, SUITE 500
CHICAGO, IL 60606
TEL (312) 939-1000
FAX (312) 939-4198

CONTRACT NO. 63710