

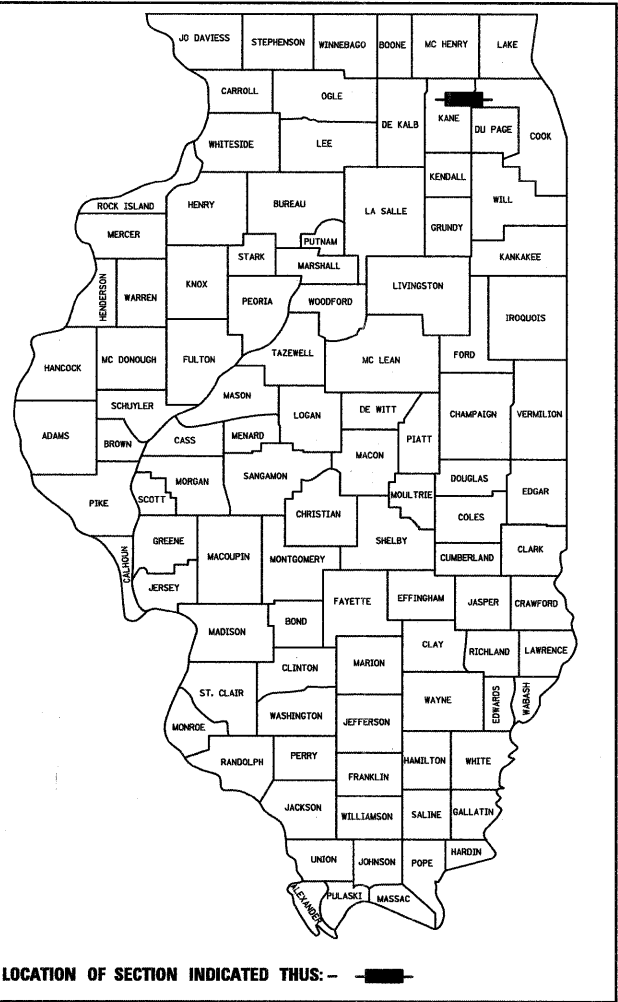
06-15-12 LETTING ITEM 231

STATE OF ILLINOIS
DEPARTMENT OF TRANSPORTATION
DIVISION OF HIGHWAYS
**PLANS FOR PROPOSED
FEDERAL AID HIGHWAY**
VARIOUS LOCATIONS,
VARIOUS LIMITS
PAVEMENT MARKINGS
SECTION 10-00179-00-ST
PROJECT SRTS-4009(063)
CITY OF ELGIN
KANE & COOK COUNTIES
C-40-010-10

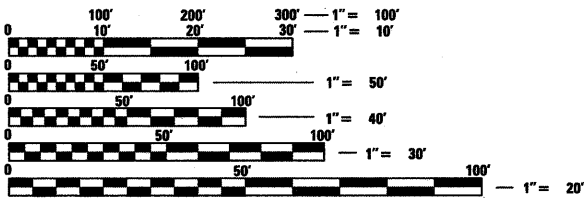
RTE.	SECTION	COUNTY	TOTAL SHEETS	SHEET NO.
	10-00179-00-ST	KANE	23	1
FED. ROAD DIST. NO. 1	ILLINOIS	CONTRACT NO. 63675		

FOR INDEX OF SHEETS, SEE SHEET NO. 2

PROJECT LOCATED IN THE CITY OF ELGIN

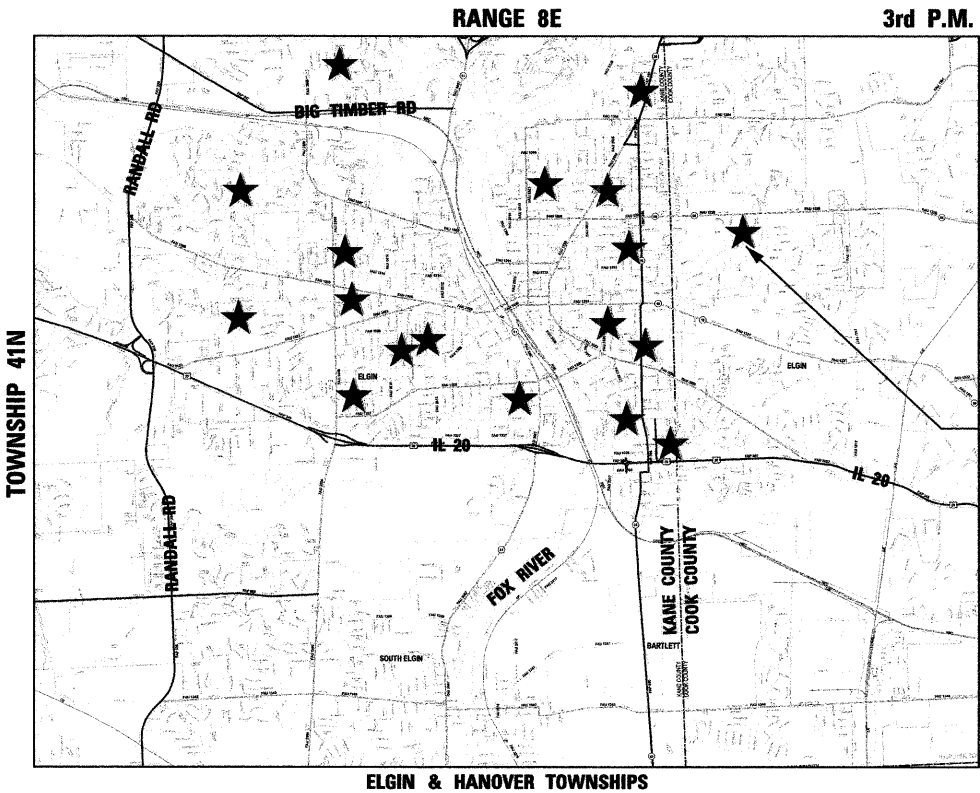


LOCATION OF SECTION INDICATED THUS: -



FULL SIZE PLANS HAVE BEEN PREPARED USING STANDARD ENGINEERING SCALES. REDUCED SIZED PLANS WILL NOT CONFORM TO STANDARD SCALES. IN MAKING MEASUREMENTS ON REDUCED PLANS, THE ABOVE SCALES MAY BE USED.

J.U.L.I.E.
JOINT UTILITY LOCATION INFORMATION FOR EXCAVATION
1-800-892-0123
OR 811



PROJECT LOCATIONS

STATE OF ILLINOIS DEPARTMENT OF TRANSPORTATION DIVISION OF HIGHWAYS	
APPROVED	February 3, 2012 Daniel Aulet MANAGEMENT ANALYST, CITY OF ELGIN
PASSED	FEBRUARY 10, 2012 CHRYSTAL C. HOLT DISTRICT 1 ENGINEER OF LOCAL ROADS & STREETS
RELEASING FOR BID BASED ON LIMITED REVIEW	FEBRUARY 14, 2012 Diane M. O'Keefe DEPUTY DIRECTOR OF HIGHWAYS, REGION 1 ENGINEER



February 3, 2012
GREGORY J. CHISMARK, P.E.
ILLINOIS REG. PROFESSIONAL ENGINEER NO. 062-044133
EXPIRATION DATE 11-30-2013



PRINTED BY THE AUTHORITY
OF THE STATE OF ILLINOIS

CONTRACT NO. 63675

PROGRAM AND OFFICE ENGINEER: CHARLES F. RIDDLE, P.E. (847) 705-4406 SCHAUMBURG, IL

GENERAL NOTES

GENERAL NOTES

ALL CONSTRUCTION SHALL BE IN ACCORDANCE WITH THE "STANDARD SPECIFICAITONS FOR ROAD AND BRIDGE CONSTRUCTION," ADOPTED JANUARY 1, 2012, THE SUPPLEMENTAL SPECIFICAITONS AND RECURRING SPECIAL PROVISIONS," ADOPTED JANUARY 1, 2012 AND THE LATEST EDITION OF THE "ILLINOIS MANUAL ON UNIFORM TRAFFIC CONTROL DEVICES FOR STREETS AND HIGHWAYS" (IMUTCD).

THE CONTRACTOR SHALL CONTACT THE TRAFFIC CONTROL SUPERVISOR AT (847) 705-4470 A MINIMUM OF 72 HOURS IN ADVANCE OF BEGINNING WORK.

UTILITIES

THE CONTRACTOR SHALL COOPERATE WITH THE CITY OF ELGIN IN ANY UNDERGROUND UTILITY CONSTRUCTION WHICH THE CITY MAY WANT TO PLACE DURING THE CONTRACTOR'S OPERATIONS. NO UNDERGROUND WORK IS SCHEDULED WITH THIS PROJECT.

THE CONTRACTOR SHALL BE RESPONSIBLE FOR CONTACTING THE OWNERS OF ALL EXISTING FACILITIES SO THAT THE UTILITIES AND THEIR APPURTENANCES MAY BE LOCATED AND ADJUSTED OR MOVED, IF NECESSARY, PRIOR TO THE START OF CONSTRUCTION OPERATIONS. THE CONTRACTOR SHALL COOPERATE WITH ALL UTILITY OWNERS AS PROVIDED FOR IN THE STANDARD SPECIFICATIONS.

THE LOCATIONS OF EXISTING DRAINAGE STRUCTURES, STORM AND SANITARY SEWERS, WATER SERVICE LINES AND OTHER UTILITY LINES ARE APPROXIMATE, AND THE DEPARTMENT DOES NOT GUARANTEE THEIR ACCURACY. THEIR EXACT HORIZONTAL AND VERTICAL LOCATIONS ARE TO BE DETERMINED IN THE FIELD BY THE CONTRACTOR AT HIS OWN EXPENSE.

THE CONTRACTOR SHALL BE RESPONSIBLE FOR THE PROTECTION OF ALL UNDERGROUND OR SURFACE UTILITIES EVEN THOUGH THEY MAY NOT BE SHOWN ON THE PLANS. ANY UTILITY THAT IS DAMAGED DURING CONSTRUCTION SHALL BE REPAIRED OR REPLACED TO THE SATISFACTION OF THE ENGINEER. THIS WORK SHALL BE AT THE CONTRACTOR'S EXPENSE.

BEFORE STARTING ANY EXCAVATION. THE CONTRACTOR SHALL CALL "J.U.L.I.E." AT 800-892-0123 FOR FIELD LOCATIONS OF BURIED ELECTRIC, TELEPHONE, GAS AND CABLE TELEVISION FACILITIES. (48 HOURS NOTIFICATION IS REQUIRED.)

STAKING

THE CONTRACTOR SHALL PROTECT AND CAREFULLY PRESERVE ALL SECTIONS OR SUBSECTION MONUMENTS OR PROPERTY OR REFERENCE MARKERS UNTIL THE ENGINEER, THIER AGENT OR AN AUTHROIZED SURVEYOR HAS WITNESSED OR OTHERWISE REFERENCED THEIR LOCATIONS.

WATER, STORM SEWER AND SANTIARY SEWER

WHENEVER DURING CONSTRUCTION OPERATIONS ANY LOOSE MATERIAL IS DEPOSITED IN THE FLOW LINE OF DRAINAGE STRUCTURES SUCH THAT THE NATURAL FLOW OF WATER IS OBSTRUCTED, IT SHALL BE REMOVED AT THE CLOSE OF EACH WORKING DAY. AT THE CONCLUSION OF CONSTRUCTION OPERATIONS, ALL UTILITY STRUCTURES WILL BE FREE FROM DIRT AND DEBRIS. THE WORK SPECIFIED ABOVE WILL NOT BE PAID FOR SEPERATELY BUT SHALL INCLUDED IN THE COST OF MOBILIZATION.

ANY EXISTING OR PROPOSED STORM SEWER DAMAGED BY THE CONTRACTOR DURING CONSTRUCTION SHALL BE REPLACED BY THE CONTRACTOR AND IS INCLUDED IN THE COST OF MOBILIZATION.

MAINTENANCE OF TRAFFIC

ALL TRAFFIC CONTROL PROTECTION SHALL PAID FOR AS A LUMP SUM.

INDEX OF SHEETS

- 1 COVER SHEET
- 2 GENERAL NOTES, INDEX & STANDARDS
- 3 SUMMARY OF QUANTITIES
- 4 PROPOSED PLAN - ABBOTT MIDDLE SCHOOL
- 5 PROPOSED PLAN - CENTURY OAKS ELEMENTARY SCHOOL
- 6 PROPOSED PLAN - CHANNING ELEMENTARY SCHOOL
- 7 PROPOSED PLAN - COLEMAN ELEMENTARY SCHOOL
- 8 PROPOSED PLAN - CREEKSIDE ELEMENTARY SCHOOL
- 9 PROPOSED PLAN - ELLIS MIDDLE SCHOOL
- 10 PROPOSED PLAN - GARFIELD ELEMENTARY SCHOOL
- 11 PROPOSED PLAN - HARRIET GIFFORD ELEMENTARY SCHOOL
- 12 PROPOSED PLAN - HIGHLAND ELEMENTARY SCHOOL
- 13 PROPOSED PLAN - HILLCREST ELEMENTARY SCHOOL
- 14 PROPOSED PLAN - HUFF ELEMENTARY SCHOOL
- 15 PROPOSED PLAN - KIMBALL MIDDLE SCHOOL
- 16 PROPOSED PLAN - LARSEN MIDDLE SCHOOL
- 17 PROPOSED PLAN - LORDS PARK ELEMENTARY SCHOOL
- 18 PROPOSED PLAN - LOWRIE ELEMENTARY SCHOOL
- 19 PROPOSED PLAN - MCKINLEY ELEMENTARY SCHOOL
- 20 PROPOSED PLAN - SHERIDAN ELEMENTARY SCHOOL
- 21 PROPOSED PLAN - WASHINGTON ELEMENTARY SCHOOL
- 22 TRAFFIC CONTROL AND PROTECTION FOR SIDE ROADS, INTERSECTIONS, AND DRIVEWAYS (TC-10)
- 23 DISTRICT ONE TYPICAL PAVEMENT MARKINGS (TC-13)

HIGHWAY STANDARDS

- 000001-06 STANDARD SYMBOLS, ABBREVIATIONS AND PATTERNS
- 701201-04 LANE CLOSURE, 2L, 2W, DAY ONLY, FOR SPEEDS ≥ 45 MPH
- 701301-04 LANE CLOSURE , 2L, 2W, SHORT TIME OPERATIONS
- 701311-03 LANE CLOSURE 2L, 2W MOVING OPERATIONS-DAY ONLY
- 701427 LANE CLOSURE, MULTILANE, INTERMITTENT OR MOVING OPER., FOR SPEEDS ≤ 40 MPH
- 701601-07 URBAN LANE CLOSURE, MULTILANE, 1W OR 2W WITH NONTRAERSABLE MEDIAN
- 701701-08 URBAN LANE CLOSURE, MULTILANE INTERSECTION
- 701801-05 SIDEWALK, CORNER OR CROSSWALK CLOSURE
- 701901-02 TRAFFIC CONTROL DEVICES
- 780001-03 TYPICAL PAVEMENT MARKINGS

DISTRICT STANDARDS

- TC-10 TRAFFIC CONTROL AND PROTECTION FOR SIDE ROADS, INTERSECTIONS, AND DRIVEWAYS
- TC-13 DISTRICT ONE TYPICAL PAVEMENT MARKINGS

FILE NAME = W:\Projects\2010\100031 Elgin\SafeRte\Acadd\Civil\Dgn\Shet\GENOTES.dgn



WILLS BURKE KELSEY ASSOCIATES LTD.

116 West Main Street, Suite 201

St. Charles, Illinois 60174

USER NAME = nporris	DESIGNED -	REVISED - 2/15/12
PLOT SCALE = N/A	DRAWN -	REVISED -
PLOT DATE = 2/14/2012	CHECKED -	REVISED -
	DATE - 2/3/12	REVISED -

STATE OF ILLINOIS
DEPARTMENT OF TRANSPORTATION

GENERAL NOTES, INDEX & STANDARDS			
SCALE: N/A	SHEET NO. 2	OF 23 SHEETS	STA. TO STA.

RTE.	SECTION	COUNTY	TOTAL SHEETS	SHEET NO.
	10-00179-00-ST	KANE	23	2
CONTRACT NO.63675				
FED. ROAD DIST. NO. 1 ILLINOIS FED. AID PROJECT				

FILE NAME = W:\Projects\2010\100001 Elgin\Grafica\cadd\Civil\Drawn\Sht\SCHOOL_01.dgn



NOTES:

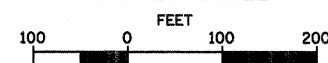
1. ALL STOP BARS AT EACH INTERSECTION SHALL BE STRIPED, EVEN IF THAT LEG OF THE INTERSECTION DOES NOT HAVE A CROSS WALK.
2. ALL EXISTING THERMOPLASTIC SHALL BE REMOVED PRIOR TO THE PLACEMENT OF THE NEW STRIPING.
3. ALL LEGS OF THE INTERSECTION THAT HAVE STOP SIGNS, SHALL HAVE STOP BARS.
4. ALL PAVEMENT MARKINGS MUST BE REPLACED THE SAME DAY AS REMOVAL.

LEGEND

- ① PEDESTRIAN CROSSWALK
SEE SHEET 22 FOR DETAIL
- ② SCHOOL CROSSWALK
SEE SHEET 22 FOR DETAIL
- ③ "SCHOOL" PAVEMENT MARKING,
LETTERS AND SYMBOLS



GRAPHIC SCALE



WBK WILLS BURKE KELSEY ASSOCIATES LTD.
116 West Main Street, Suite 201
St. Charles, Illinois 60174

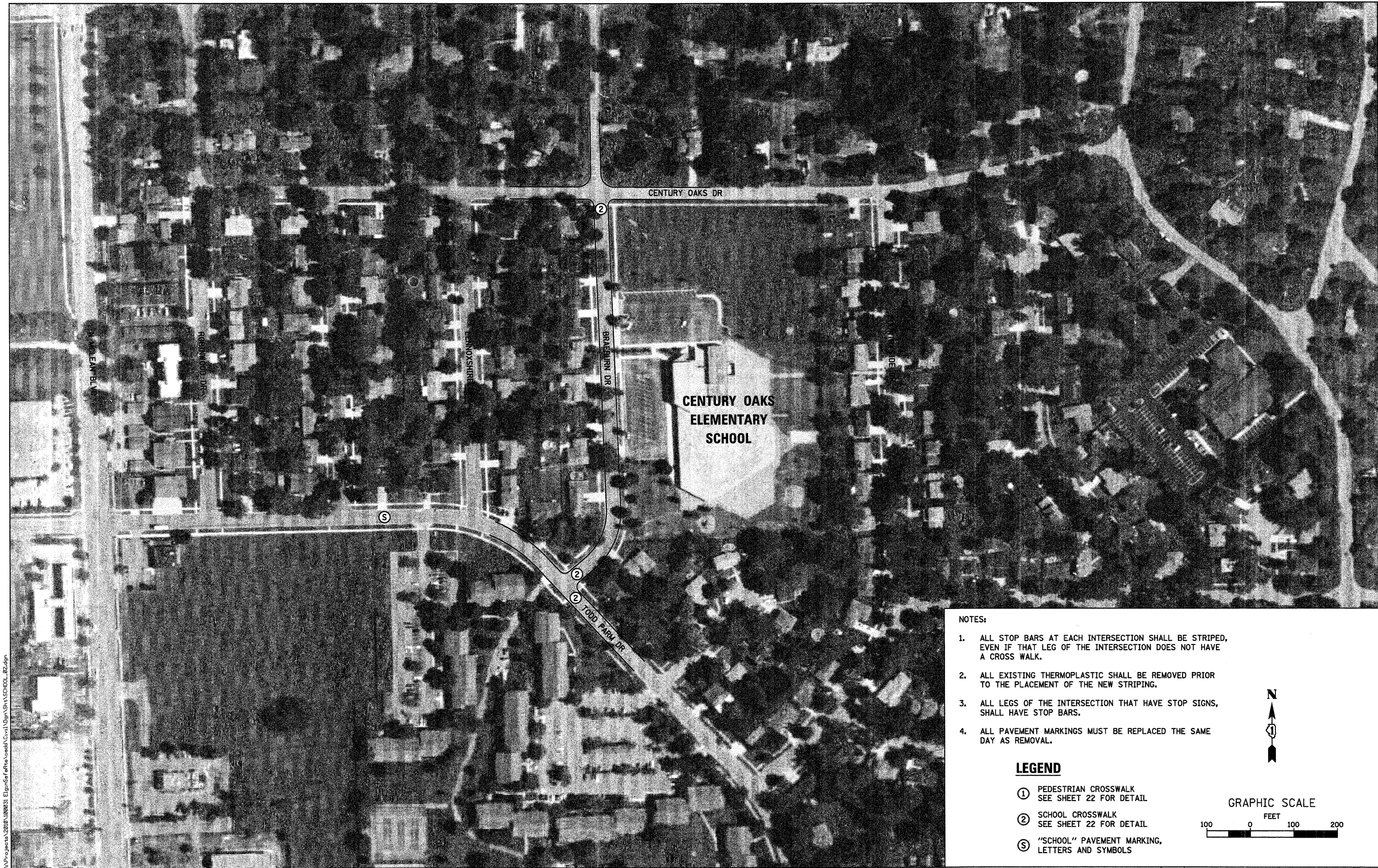
USER NAME = nparris	DESIGNED -	REVISED - 2/15/12
PLOT SCALE = AS SHOWN	DRAWN -	REVISED -
PLOT DATE = 2/14/2012	CHECKED -	REVISED -
	DATE - 2/3/12	REVISED -

STATE OF ILLINOIS
DEPARTMENT OF TRANSPORTATION

PROPOSED PLAN
ABBOTT MIDDLE SCHOOL

SCALE: AS SHOWN SHEET NO. 4 OF 23 SHEETS STA. TO STA.

ROUTE	SECTION	COUNTY	TOTAL SHEETS	SHEET NO.
	10-00179-00-ST	KANE	23	4
CONTRACT NO.63675				
FED. ROAD DIST. NO. 1 ILLINOIS FED. AID PROJECT				



NOTES:

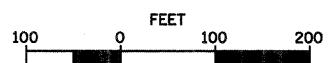
1. ALL STOP BARS AT EACH INTERSECTION SHALL BE STRIPED, EVEN IF THAT LEG OF THE INTERSECTION DOES NOT HAVE A CROSS WALK.
2. ALL EXISTING THERMOPLASTIC SHALL BE REMOVED PRIOR TO THE PLACEMENT OF THE NEW STRIPING.
3. ALL LEGS OF THE INTERSECTION THAT HAVE STOP SIGNS, SHALL HAVE STOP BARS.
4. ALL PAVEMENT MARKINGS MUST BE REPLACED THE SAME DAY AS REMOVAL.

LEGEND

- ① PEDESTRIAN CROSSWALK
SEE SHEET 22 FOR DETAIL
- ② SCHOOL CROSSWALK
SEE SHEET 22 FOR DETAIL
- ③ "SCHOOL" PAVEMENT MARKING,
LETTERS AND SYMBOLS



GRAPHIC SCALE



FILE NAME = W:\Projects\2010\000031 Elgin\Set\ette\add\Civil\Drawn\Shr\SCHOOL_02.dgn

WBK WILLS BURKE KELSEY ASSOCIATES LTD.
110 West Main Street, Suite 201
St. Charles, Illinois 60174

USER NAME = nporris	DESIGNED -	REVISED - 2/15/12
PLOT SCALE = AS SHOWN	DRAWN -	REVISED -
PLOT DATE = 2/14/2012	CHECKED -	REVISED -
	DATE - 2/3/12	REVISED -

STATE OF ILLINOIS
DEPARTMENT OF TRANSPORTATION

PROPOSED PLAN
CENTURY OAKS ELEMENTARY SCHOOL

SCALE: AS SHOWN SHEET NO. 5 OF 23 SHEETS STA. TO STA.

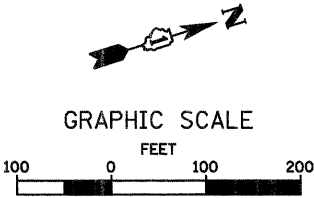
ROUTE	SECTION	COUNTY	TOTAL SHEETS	SHEET NO.
	10-00179-00-ST	KANE	23	5
CONTRACT NO. 63675				
FED. ROAD DIST. NO. 1 ILLINOIS FED. AID PROJECT				



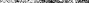
- NOTES:
1. ALL STOP BARS AT EACH INTERSECTION SHALL BE STRIPED, EVEN IF THAT LEG OF THE INTERSECTION DOES NOT HAVE A CROSS WALK.
 2. ALL EXISTING THERMOPLASTIC SHALL BE REMOVED PRIOR TO THE PLACEMENT OF THE NEW STRIPING.
 3. ALL LEGS OF THE INTERSECTION THAT HAVE STOP SIGNS, SHALL HAVE STOP BARS.
 4. ALL PAVEMENT MARKINGS MUST BE REPLACED THE SAME DAY AS REMOVAL.

LEGEND

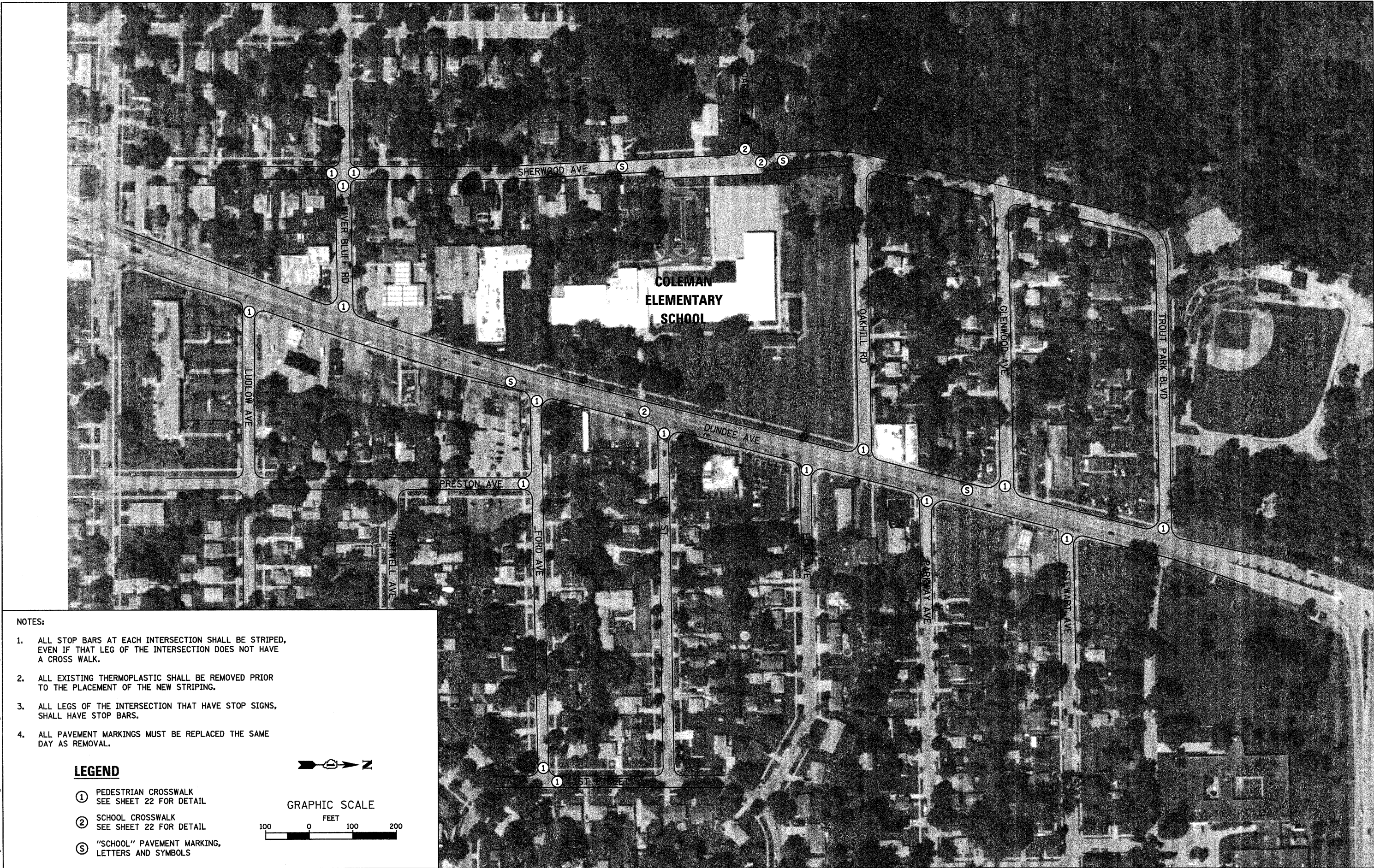
- ① PEDESTRIAN CROSSWALK
SEE SHEET 22 FOR DETAIL
- ② SCHOOL CROSSWALK
SEE SHEET 22 FOR DETAIL
- ③ "SCHOOL" PAVEMENT MARKING,
LETTERS AND SYMBOLS



FILE NAME = W:\Projects\2010\100031 Elgin\Setfiles\cadd\Civil\Gm\Sht\SCH001_03.dgn

 WILLS BURKE KELSEY ASSOCIATES LTD. 110 West Main Street, Suite 201 St. Charles, Illinois 60174	USER NAME = nporris	DESIGNED -	REVISED - 2/15/12	STATE OF ILLINOIS DEPARTMENT OF TRANSPORTATION	PROPOSED PLAN CHANNING ELEMENTARY SCHOOL				RTE.	SECTION	COUNTY	TOTAL SHEETS	SHEET NO.
	PLOT SCALE = AS SHOWN	DRAWN -	REVISED -							10-00179-00-ST	KANE	23	6
	CHECKED -	REVISER -	REVISED -		CONTRACT NO.63675								
	PLOT DATE = 2/14/2012	DATE - 2/3/12	REVISED -		SCALE: AS SHOWN	SHEET NO. 6 OF 23 SHEETS	STA.	TO STA.	FED. ROAD DIST. NO. 1	ILLINOIS	FED. AID PROJECT		

FILE NAME = W:\Projects\2010\1000031 Elgin\SafeRte\Add'l\Ugn\Sht\SCH001_04.dgn



NOTES:

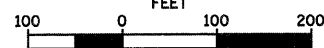
1. ALL STOP BARS AT EACH INTERSECTION SHALL BE STRIPED, EVEN IF THAT LEG OF THE INTERSECTION DOES NOT HAVE A CROSS WALK.
2. ALL EXISTING THERMOPLASTIC SHALL BE REMOVED PRIOR TO THE PLACEMENT OF THE NEW STRIPING.
3. ALL LEGS OF THE INTERSECTION THAT HAVE STOP SIGNS, SHALL HAVE STOP BARS.
4. ALL PAVEMENT MARKINGS MUST BE REPLACED THE SAME DAY AS REMOVAL.

LEGEND

- ① PEDESTRIAN CROSSWALK
SEE SHEET 22 FOR DETAIL
- ② SCHOOL CROSSWALK
SEE SHEET 22 FOR DETAIL
- ⑤ "SCHOOL" PAVEMENT MARKING,
LETTERS AND SYMBOLS



GRAPHIC SCALE



USER NAME = nparris	DESIGNED -	REVISED - 2/15/12
	DRAWN -	REVISED -
PLOT SCALE = AS SHOWN	CHECKED -	REVISED -
PLOT DATE = 2/14/2012	DATE - 2/3/12	REVISED -

STATE OF ILLINOIS
DEPARTMENT OF TRANSPORTATION

PROPOSED PLAN
COLEMAN ELEMENTARY SCHOOL

SCALE: AS SHOWN SHEET NO. 7 OF 23 SHEETS STA. TO STA.

RTE.	SECTION	COUNTY	TOTAL SHEETS	SHEET NO.
	10-00179-00-ST	KANE	23	7
CONTRACT NO.63675				
FED. ROAD DIST. NO. 1 ILLINOIS FED. AID PROJECT				



NOTES:

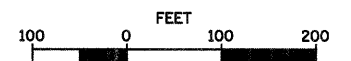
1. ALL STOP BARS AT EACH INTERSECTION SHALL BE STRIPED, EVEN IF THAT LEG OF THE INTERSECTION DOES NOT HAVE A CROSS WALK.
2. ALL EXISTING THERMOPLASTIC SHALL BE REMOVED PRIOR TO THE PLACEMENT OF THE NEW STRIPING.
3. ALL LEGS OF THE INTERSECTION THAT HAVE STOP SIGNS, SHALL HAVE STOP BARS.
4. ALL PAVEMENT MARKINGS MUST BE REPLACED THE SAME DAY AS REMOVAL.

LEGEND

- ① PEDESTRIAN CROSSWALK
SEE SHEET 22 FOR DETAIL
- ② SCHOOL CROSSWALK
SEE SHEET 22 FOR DETAIL
- ③ "SCHOOL" PAVEMENT MARKING,
LETTERS AND SYMBOLS



GRAPHIC SCALE



FILE NAME = W:\Projects\2010\100031 Elgin\Set\After\Acad\Civil\Open\SHA\SCHOOL_05.dgn

WBK WILLS BURKE KELSEY ASSOCIATES LTD.
116 West Main Street, Suite 201
St. Charles, Illinois 60174

USER NAME = nporris	DESIGNED -	REVISED - 2/15/12
	DRAWN -	REVISED -
PLOT SCALE = AS SHOWN	CHECKED -	REVISED -
PLOT DATE = 2/14/2012	DATE - 2/3/12	REVISED -

STATE OF ILLINOIS
DEPARTMENT OF TRANSPORTATION

PROPOSED PLAN
CREEKSIDE ELEMENTARY SCHOOL

SCALE: AS SHOWN	SHEET NO. 8 OF 23 SHEETS	STA. TO STA.
-----------------	--------------------------	--------------

RTE.	SECTION	COUNTY	TOTAL SHEETS	SHEET NO.
	10-00179-00-ST	KANE	23	8
CONTRACT NO. 63675				
FED. ROAD DIST. NO. 1 ILLINOIS FED. AID PROJECT				

FILE NAME = W:\Projects\2010\000031\Elgin\SafeRte\cadd\Civil\Drawings\SCH001_06.dgn



NOTES:

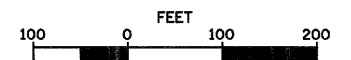
1. ALL STOP BARS AT EACH INTERSECTION SHALL BE STRIPED, EVEN IF THAT LEG OF THE INTERSECTION DOES NOT HAVE A CROSS WALK.
2. ALL EXISTING THERMOPLASTIC SHALL BE REMOVED PRIOR TO THE PLACEMENT OF THE NEW STRIPING.
3. ALL LEGS OF THE INTERSECTION THAT HAVE STOP SIGNS, SHALL HAVE STOP BARS.
4. ALL PAVEMENT MARKINGS MUST BE REPLACED THE SAME DAY AS REMOVAL.

LEGEND

- ① PEDESTRIAN CROSSWALK
SEE SHEET 22 FOR DETAIL
- ② SCHOOL CROSSWALK
SEE SHEET 22 FOR DETAIL
- ③ "SCHOOL" PAVEMENT MARKING,
LETTERS AND SYMBOLS



GRAPHIC SCALE



WBK WILLS BURKE KELSEY ASSOCIATES LTD.
116 West Main Street, Suite 201
St. Charles, Illinois 60174

USER NAME = nporris	DESIGNED -	REVISED - 2/15/12
	DRAWN -	REVISED -
PLOT SCALE = AS SHOWN	CHECKED -	REVISED -
PLOT DATE = 2/14/2012	DATE - 2/3/12	REVISED -

STATE OF ILLINOIS
DEPARTMENT OF TRANSPORTATION

PROPOSED PLAN
ELLIS MIDDLE SCHOOL

SCALE: AS SHOWN SHEET NO. 9 OF 23 SHEETS STA. TO STA.

RTE.	SECTION	COUNTY	TOTAL SHEETS	SHEET NO.
	10-00179-00-ST	KANE	23	9
CONTRACT NO.63675				
FED. ROAD DIST. NO. 1 ILLINOIS FED. AID PROJECT				



NOTES:

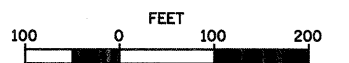
1. ALL STOP BARS AT EACH INTERSECTION SHALL BE STRIPED, EVEN IF THAT LEG OF THE INTERSECTION DOES NOT HAVE A CROSS WALK.
2. ALL EXISTING THERMOPLASTIC SHALL BE REMOVED PRIOR TO THE PLACEMENT OF THE NEW STRIPING.
3. ALL LEGS OF THE INTERSECTION THAT HAVE STOP SIGNS, SHALL HAVE STOP BARS.
4. ALL PAVEMENT MARKINGS MUST BE REPLACED THE SAME DAY AS REMOVAL.

LEGEND

- ① PEDESTRIAN CROSSWALK
SEE SHEET 22 FOR DETAIL
- ② SCHOOL CROSSWALK
SEE SHEET 22 FOR DETAIL
- ③ "SCHOOL" PAVEMENT MARKING,
LETTERS AND SYMBOLS



GRAPHIC SCALE



FILE NAME = W:\Projects\2010\100031_Elgrin\Set\ette\cadd\Civil\Ogn\Shs\SCHOOL_07.dgn

WILLS BURKE KELSEY ASSOCIATES LTD.
110 West Main Street, Suite 201
St. Charles, Illinois 60174

USER NAME = nporris	DESIGNED -	REVISED - 2/15/12
PLOT SCALE = AS SHOWN	DRAWN -	REVISED -
PLOT DATE = 2/14/2012	CHECKED -	REVISED -
	DATE - 2/3/12	REVISED -

STATE OF ILLINOIS
DEPARTMENT OF TRANSPORTATION

PROPOSED PLAN
GARFIELD ELEMENTARY SCHOOL

SCALE: AS SHOWN SHEET NO. 10 OF 23 SHEETS STA. TO STA.

RTE.	SECTION	COUNTY	TOTAL SHEETS	SHEET NO.
	10-00179-00-ST	KANE	23	10
CONTRACT NO.63675				
FED. ROAD DIST. NO. 1 ILLINOIS FED. AID PROJECT				

FILE NAME = M:\Projects\2012\000031 Elgin\Set\After\Need\Civil\Drawn\Sht\School_08.dgn



NOTES:

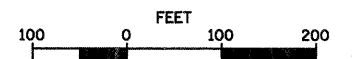
1. ALL STOP BARS AT EACH INTERSECTION SHALL BE STRIPED, EVEN IF THAT LEG OF THE INTERSECTION DOES NOT HAVE A CROSS WALK.
2. ALL EXISTING THERMOPLASTIC SHALL BE REMOVED PRIOR TO THE PLACEMENT OF THE NEW STRIPING.
3. ALL LEGS OF THE INTERSECTION THAT HAVE STOP SIGNS, SHALL HAVE STOP BARS.
4. ALL PAVEMENT MARKINGS MUST BE REPLACED THE SAME DAY AS REMOVAL.

LEGEND

- ① PEDESTRIAN CROSSWALK
SEE SHEET 22 FOR DETAIL
- ② SCHOOL CROSSWALK
SEE SHEET 22 FOR DETAIL
- ③ "SCHOOL" PAVEMENT MARKING,
LETTERS AND SYMBOLS



GRAPHIC SCALE



WILLIS BURKE KELSEY ASSOCIATES LTD.
116 West Main Street, Suite 201
St. Charles, Illinois 60174

USER NAME = nporris	DESIGNED -	REVISED - 2/15/12
	DRAWN -	REVISED -
PLOT SCALE = AS SHOWN	CHECKED -	REVISED -
PLOT DATE = 2/14/2012	DATE - 2/3/12	REVISED -

**STATE OF ILLINOIS
DEPARTMENT OF TRANSPORTATION**

PROPOSED PLAN		HARRIET GIFFORD ELEMENTARY SCHOOL		RTE.		SECTION	COUNTY	TOTAL SHEETS	SHEET NO.
SCALE: AS SHOWN		SHEET NO. 11 OF 23 SHEETS		STA.		10-00179-00-ST	KANE	23	11
		TO STA.				FED. ROAD DIST. NO. 1		ILLINOIS FED. AID PROJECT	
								CONTRACT NO. 63675	

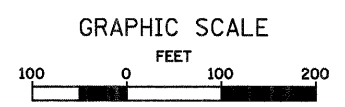


NOTES:

1. ALL STOP BARS AT EACH INTERSECTION SHALL BE STRIPED, EVEN IF THAT LEG OF THE INTERSECTION DOES NOT HAVE A CROSS WALK.
2. ALL EXISTING THERMOPLASTIC SHALL BE REMOVED PRIOR TO THE PLACEMENT OF THE NEW STRIPING.
3. ALL LEGS OF THE INTERSECTION THAT HAVE STOP SIGNS, SHALL HAVE STOP BARS.
4. ALL PAVEMENT MARKINGS MUST BE REPLACED THE SAME DAY AS REMOVAL.

LEGEND

- ① PEDESTRIAN CROSSWALK
SEE SHEET 22 FOR DETAIL
- ② SCHOOL CROSSWALK
SEE SHEET 22 FOR DETAIL
- ③ "SCHOOL" PAVEMENT MARKING,
LETTERS AND SYMBOLS



FILE NAME = M:\P\projects\2010\000031 Elgin Safe Route\cadd\Civil\Drawn\SHA\SCHOOL_05.dgn



WILLS BURKE KELSEY ASSOCIATES LTD.
116 West Main Street, Suite 201
St. Charles, Illinois 60174

USER NAME = nparris	DESIGNED -	REVISED - 2/15/12
	DRAWN -	
PLOT SCALE = AS SHOWN	CHECKED -	REVISED -
PLOT DATE = 2/14/2012	DATE - 2/3/12	REVISED -

STATE OF ILLINOIS
DEPARTMENT OF TRANSPORTATION

PROPOSED PLAN
HIGHLAND ELEMENTARY SCHOOL

SCALE: AS SHOWN SHEET NO. 12 OF 23 SHEETS STA. TO STA.

RTE.	SECTION	COUNTY	TOTAL SHEETS	SHEET NO.
	10-00179-00-ST	KANE	23	12
FED. ROAD DIST. NO. 1 ILLINOIS FED. AID PROJECT				
CONTRACT NO. 63675				



NOTES:

1. ALL STOP BARS AT EACH INTERSECTION SHALL BE STRIPED, EVEN IF THAT LEG OF THE INTERSECTION DOES NOT HAVE A CROSS WALK.
2. ALL EXISTING THERMOPLASTIC SHALL BE REMOVED PRIOR TO THE PLACEMENT OF THE NEW STRIPING.
3. ALL LEGS OF THE INTERSECTION THAT HAVE STOP SIGNS, SHALL HAVE STOP BARS.
4. ALL PAVEMENT MARKINGS MUST BE REPLACED THE SAME DAY AS REMOVAL.

LEGEND

- ① PEDESTRIAN CROSSWALK
SEE SHEET 22 FOR DETAIL
- ② SCHOOL CROSSWALK
SEE SHEET 22 FOR DETAIL
- ③ "SCHOOL" PAVEMENT MARKING,
LETTERS AND SYMBOLS



GRAPHIC SCALE



FILE NAME = W:\Projects\2010\100031 Elgin\Set\ette\oad\Civil\Ogn\SHA SCHOOL_10.dgn



WILLS BURKE KELSEY ASSOCIATES LTD.
110 West Main Street, Suite 201
St. Charles, Illinois 60174

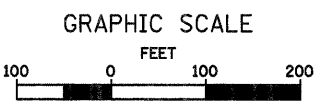
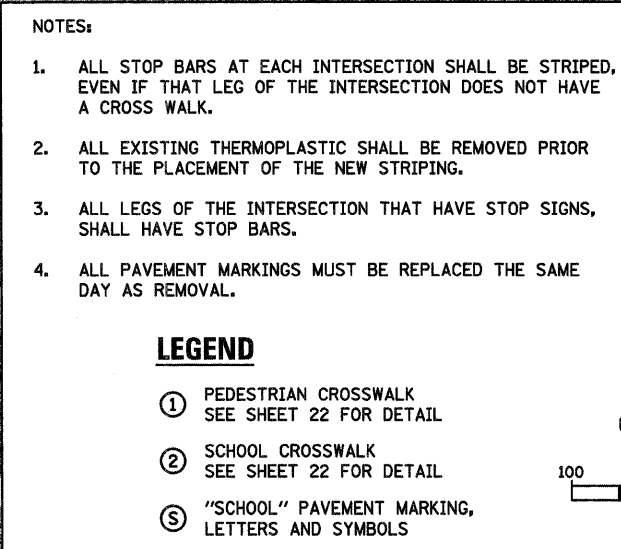
USER NAME = nporris	DESIGNED -	REVISED - 2/15/12
PLOT SCALE = AS SHOWN	DRAWN -	REVISED -
PLOT DATE = 2/14/2012	CHECKED -	REVISED -
	DATE - 2/3/12	REVISED -

STATE OF ILLINOIS
DEPARTMENT OF TRANSPORTATION

PROPOSED PLAN
HILLCREST ELEMENTARY SCHOOL

SCALE: AS SHOWN SHEET NO. 13 OF 23 SHEETS STA. TO STA.

RT.	SECTION	COUNTY	TOTAL SHEETS	SHEET NO.
	10-00179-00-ST	KANE	23	13
FED. ROAD DIST. NO. 1 ILLINOIS FED. AID PROJECT				



<div>WILLS BURKE KELSEY ASSOCIATES LTD. 116 West Main Street, Suite 201 St. Charles, Illinois 60174</div>	USER NAME = nparr1s	DESIGNED	REVISED - 2/15/12	<div>STATE OF ILLINOIS DEPARTMENT OF TRANSPORTATION</div>	<div>PROPOSED PLAN HUFF ELEMENTARY SCHOOL</div>				RTE.	SECTION	COUNTY	TOTAL SHEETS	SHEET NO.
		DRAWN -	REVISED -			10-00179-00-ST	KANE	23	14				
	PLOT SCALE = AS SHOWN	CHECKED -	REVISED -		CONTRACT NO.63675								
	PLOT DATE = 2/14/2012	DATE - 2/3/12	REVISED -		SCALE: AS SHOWN	SHEET NO. 14 OF 23 SHEETS	STA. TO STA.	FED. ROAD DIST. NO. 1 ILLINOIS FED. AID PROJECT					

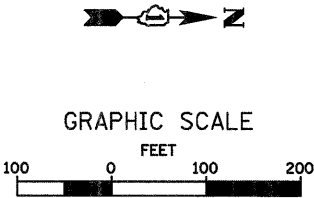
FILE NAME = W:\Projects\2010\100031 ElginSafeRte\cadd\Civil\Dgn\Shet\SCH00L_12.dgn



- NOTES:
- 1. ALL STOP BARS AT EACH INTERSECTION SHALL BE STRIPED, EVEN IF THAT LEG OF THE INTERSECTION DOES NOT HAVE A CROSS WALK.
 - 2. ALL EXISTING THERMOPLASTIC SHALL BE REMOVED PRIOR TO THE PLACEMENT OF THE NEW STRIPING.
 - 3. ALL LEGS OF THE INTERSECTION THAT HAVE STOP SIGNS, SHALL HAVE STOP BARS.
 - 4. ALL PAVEMENT MARKINGS MUST BE REPLACED THE SAME DAY AS REMOVAL.

LEGEND

- ① PEDESTRIAN CROSSWALK
SEE SHEET 22 FOR DETAIL
- ② SCHOOL CROSSWALK
SEE SHEET 22 FOR DETAIL
- ③ "SCHOOL" PAVEMENT MARKING,
LETTERS AND SYMBOLS



<div><div>WBK</div><div>WILLS BURKE KELSEY ASSOCIATES LTD. 116 West Main Street, Suite 201 St. Charles, Illinois 60174</div></div>	USER NAME = nporris	DESIGNED	REVISED - 2/15/12	STATE OF ILLINOIS DEPARTMENT OF TRANSPORTATION	PROPOSED PLAN KIMBALL MIDDLE SCHOOL			RTE.	SECTION	COUNTY	TOTAL SHEETS	SHEET NO.
		DRAWN -	REVISED -			10-00179-00-ST	KANE	23	15			
	PLOT SCALE = AS SHOWN	CHECKED -	REVISED -					CONTRACT NO.63675				
	PLOT DATE = 2/14/2012	DATE - 2/3/12	REVISED -		SCALE: AS SHOWN	SHEET NO. 15 OF 23 SHEETS	STA.	TO STA.	FED. ROAD DIST. NO. 1	ILLINOIS	FED. AID PROJECT	



NOTES:

1. ALL STOP BARS AT EACH INTERSECTION SHALL BE STRIPED, EVEN IF THAT LEG OF THE INTERSECTION DOES NOT HAVE A CROSS WALK.
2. ALL EXISTING THERMOPLASTIC SHALL BE REMOVED PRIOR TO THE PLACEMENT OF THE NEW STRIPING.
3. ALL LEGS OF THE INTERSECTION THAT HAVE STOP SIGNS, SHALL HAVE STOP BARS.
4. ALL PAVEMENT MARKINGS MUST BE REPLACED THE SAME DAY AS REMOVAL.

LEGEND

- ① PEDESTRIAN CROSSWALK
SEE SHEET 22 FOR DETAIL
- ② SCHOOL CROSSWALK
SEE SHEET 22 FOR DETAIL
- ③ "SCHOOL" PAVEMENT MARKING,
LETTERS AND SYMBOLS



GRAPHIC SCALE



FILE NAME = W:\Projects\2010\100031 Elgin\Set\Elgin\Civil\Drawings\School_14.dgn

WBK WILLIS BURKE KELSEY ASSOCIATES LTD.
116 West Main Street, Suite 201
St. Charles, Illinois 60174

USER NAME = nporris	DESIGNED -	REVISED - 2/15/12
PLOT SCALE = AS SHOWN	DRAWN -	REVISED -
PLOT DATE = 2/14/2012	CHECKED -	REVISED -
	DATE - 2/3/12	REVISED -

STATE OF ILLINOIS
DEPARTMENT OF TRANSPORTATION

PROPOSED PLAN
LARSEN MIDDLE SCHOOL

SCALE: AS SHOWN SHEET NO. 16 OF 23 SHEETS STA. TO STA.

RTE.	SECTION	COUNTY	TOTAL SHEETS	SHEET NO.
	10-00179-00-ST	KANE	23	16
CONTRACT NO. 63675				
FED. ROAD DIST. NO. 1 ILLINOIS FED. AID PROJECT				



NOTES:

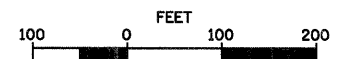
1. ALL STOP BARS AT EACH INTERSECTION SHALL BE STRIPED, EVEN IF THAT LEG OF THE INTERSECTION DOES NOT HAVE A CROSS WALK.
2. ALL EXISTING THERMOPLASTIC SHALL BE REMOVED PRIOR TO THE PLACEMENT OF THE NEW STRIPING.
3. ALL LEGS OF THE INTERSECTION THAT HAVE STOP SIGNS, SHALL HAVE STOP BARS.
4. ALL PAVEMENT MARKINGS MUST BE REPLACED THE SAME DAY AS REMOVAL.

LEGEND

- ① PEDESTRIAN CROSSWALK
SEE SHEET 22 FOR DETAIL
- ② SCHOOL CROSSWALK
SEE SHEET 22 FOR DETAIL
- ③ "SCHOOL" PAVEMENT MARKING,
LETTERS AND SYMBOLS



GRAPHIC SCALE



FILE NAME = W:\Projects\2010\000031 Elgin\Set\After\Need\Civil\Drawn\Sht\SCHOOL_15.dgn

WILLIS BURKE KELSEY ASSOCIATES LTD.
116 West Main Street, Suite 201
St. Charles, Illinois 60174

USER NAME = nporris	DESIGNED -	REVISED - 2/15/12
	DRAWN -	REVISED -
PLOT SCALE = AS SHOWN	CHECKED -	REVISED -
PLOT DATE = 2/14/2012	DATE - 2/3/12	REVISED -

STATE OF ILLINOIS
DEPARTMENT OF TRANSPORTATION

PROPOSED PLAN
LORDS PARK ELEMENTARY SCHOOL

SCALE: AS SHOWN SHEET NO. 17 OF 23 SHEETS STA. TO STA.

RTE.	SECTION	COUNTY	TOTAL SHEETS	SHEET NO.
	10-00179-00-ST	KANE	23	17
CONTRACT NO. 63675				
FED. ROAD DIST. NO. 1 ILLINOIS FED. AID PROJECT				

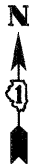


NOTES:

1. ALL STOP BARS AT EACH INTERSECTION SHALL BE STRIPED, EVEN IF THAT LEG OF THE INTERSECTION DOES NOT HAVE A CROSS WALK.
2. ALL EXISTING THERMOPLASTIC SHALL BE REMOVED PRIOR TO THE PLACEMENT OF THE NEW STRIPING.
3. ALL LEGS OF THE INTERSECTION THAT HAVE STOP SIGNS, SHALL HAVE STOP BARS.
4. ALL PAVEMENT MARKINGS MUST BE REPLACED THE SAME DAY AS REMOVAL.

LEGEND

- ① PEDESTRIAN CROSSWALK
SEE SHEET 22 FOR DETAIL
- ② SCHOOL CROSSWALK
SEE SHEET 22 FOR DETAIL
- ③ "SCHOOL" PAVEMENT MARKING,
LETTERS AND SYMBOLS



GRAPHIC SCALE



FILE NAME = W:\Projects\2010\100031 Elgin\Sefer\Elgin\Civil\Drawings\SCH001.dgn

WBK WILLS BURKE KELSEY ASSOCIATES LTD.
110 West Main Street, Suite 201
St. Charles, Illinois 60174

USER NAME = nporris	DESIGNED -	REVISED - 2/15/12
	DRAWN -	REVISED -
PLOT SCALE = AS SHOWN	CHECKED -	REVISED -
PLOT DATE = 2/14/2012	DATE - 2/3/12	REVISED -

STATE OF ILLINOIS
DEPARTMENT OF TRANSPORTATION

PROPOSED PLAN
LOWRIE ELEMENTARY SCHOOL

SCALE: AS SHOWN SHEET NO. 18 OF 23 SHEETS STA. TO STA.

ROUTE	SECTION	COUNTY	TOTAL SHEETS	SHEET NO.
	10-00179-00-ST	KANE	23	18
CONTRACT NO. 63675				
FED. ROAD DIST. NO. 1 ILLINOIS FED. AID PROJECT				



NOTES:

1. ALL STOP BARS AT EACH INTERSECTION SHALL BE STRIPED, EVEN IF THAT LEG OF THE INTERSECTION DOES NOT HAVE A CROSS WALK.
2. ALL EXISTING THERMOPLASTIC SHALL BE REMOVED PRIOR TO THE PLACEMENT OF THE NEW STRIPING.
3. ALL LEGS OF THE INTERSECTION THAT HAVE STOP SIGNS, SHALL HAVE STOP BARS.
4. ALL PAVEMENT MARKINGS MUST BE REPLACED THE SAME DAY AS REMOVAL.

LEGEND

- ① PEDESTRIAN CROSSWALK
SEE SHEET 22 FOR DETAIL
- ② SCHOOL CROSSWALK
SEE SHEET 22 FOR DETAIL
- ③ "SCHOOL" PAVEMENT MARKING,
LETTERS AND SYMBOLS



GRAPHIC SCALE



FILE NAME = W:\Projects\2010\000031 Elgin\Sefton\cadd\Civil\09\Shs\SCHOOL_17.dgn



WILLS BURKE KELSEY ASSOCIATES LTD.
116 West Main Street, Suite 201
St. Charles, Illinois 60174

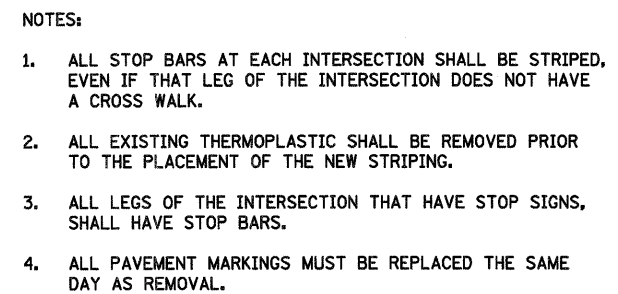
USER NAME = nporris	DESIGNED -	REVISED - 2/15/12
	DRAWN -	REVISED -
PLOT SCALE = AS SHOWN	CHECKED -	REVISED -
PLOT DATE = 2/14/2012	DATE - 2/3/12	REVISED -

STATE OF ILLINOIS
DEPARTMENT OF TRANSPORTATION

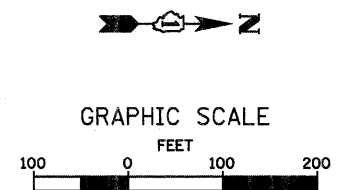
PROPOSED PLAN
MCKINLEY ELEMENTARY SCHOOL

SCALE: AS SHOWN SHEET NO. 19 OF 23 SHEETS STA. TO STA.

RTE.	SECTION	COUNTY	TOTAL SHEETS	SHEET NO.
	10-00179-00-ST	KANE	23	19
CONTRACT NO. 63675				
FED. ROAD DIST. NO. 1 ILLINOIS FED. AID PROJECT				



- ① PEDESTRIAN CROSSWALK
SEE SHEET 22 FOR DETAIL
- ② SCHOOL CROSSWALK
SEE SHEET 22 FOR DETAIL
- ⑤ "SCHOOL" PAVEMENT MARKING,
LETTERS AND SYMBOLS



USER NAME = nparris	DESIGNED -	REVISED - 2/15/12
	DRAWN -	REVISED -
PLOT SCALE = AS SHOWN	CHECKED -	REVISED -
PLOT DATE = 2/14/2012	DATE - 2/3/12	REVISED -

**STATE OF ILLINOIS
DEPARTMENT OF TRANSPORTATION**

PROPOSED PLAN
SHERIDAN ELEMENTARY SCHOOL

SCALE: AS SHOWN			SHEET NO. 20 OF 23 SHEETS		STA. TO STA.		FED. ROAD DIST. NO. 1			ILLINOIS		FED. AID PROJECT	
-----------------	--	--	---------------------------	--	--------------	--	-----------------------	--	--	----------	--	------------------	--



NOTES:

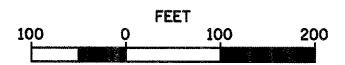
1. ALL STOP BARS AT EACH INTERSECTION SHALL BE STRIPED, EVEN IF THAT LEG OF THE INTERSECTION DOES NOT HAVE A CROSS WALK.
2. ALL EXISTING THERMOPLASTIC SHALL BE REMOVED PRIOR TO THE PLACEMENT OF THE NEW STRIPING.
3. ALL LEGS OF THE INTERSECTION THAT HAVE STOP SIGNS, SHALL HAVE STOP BARS.
4. ALL PAVEMENT MARKINGS MUST BE REPLACED THE SAME DAY AS REMOVAL.

LEGEND

- ① PEDESTRIAN CROSSWALK
SEE SHEET 22 FOR DETAIL
- ② SCHOOL CROSSWALK
SEE SHEET 22 FOR DETAIL
- ③ "SCHOOL" PAVEMENT MARKING,
LETTERS AND SYMBOLS



GRAPHIC SCALE



FILE NAME = W:\Projects\2010\1000231 Elgin\Seffer\road\Civil\Ugm\Sh\A\SCHOOL_20.dgn

WBK **WILLS BURKE KELSEY ASSOCIATES LTD.**
110 West Main Street, Suite 201
St. Charles, Illinois 60174

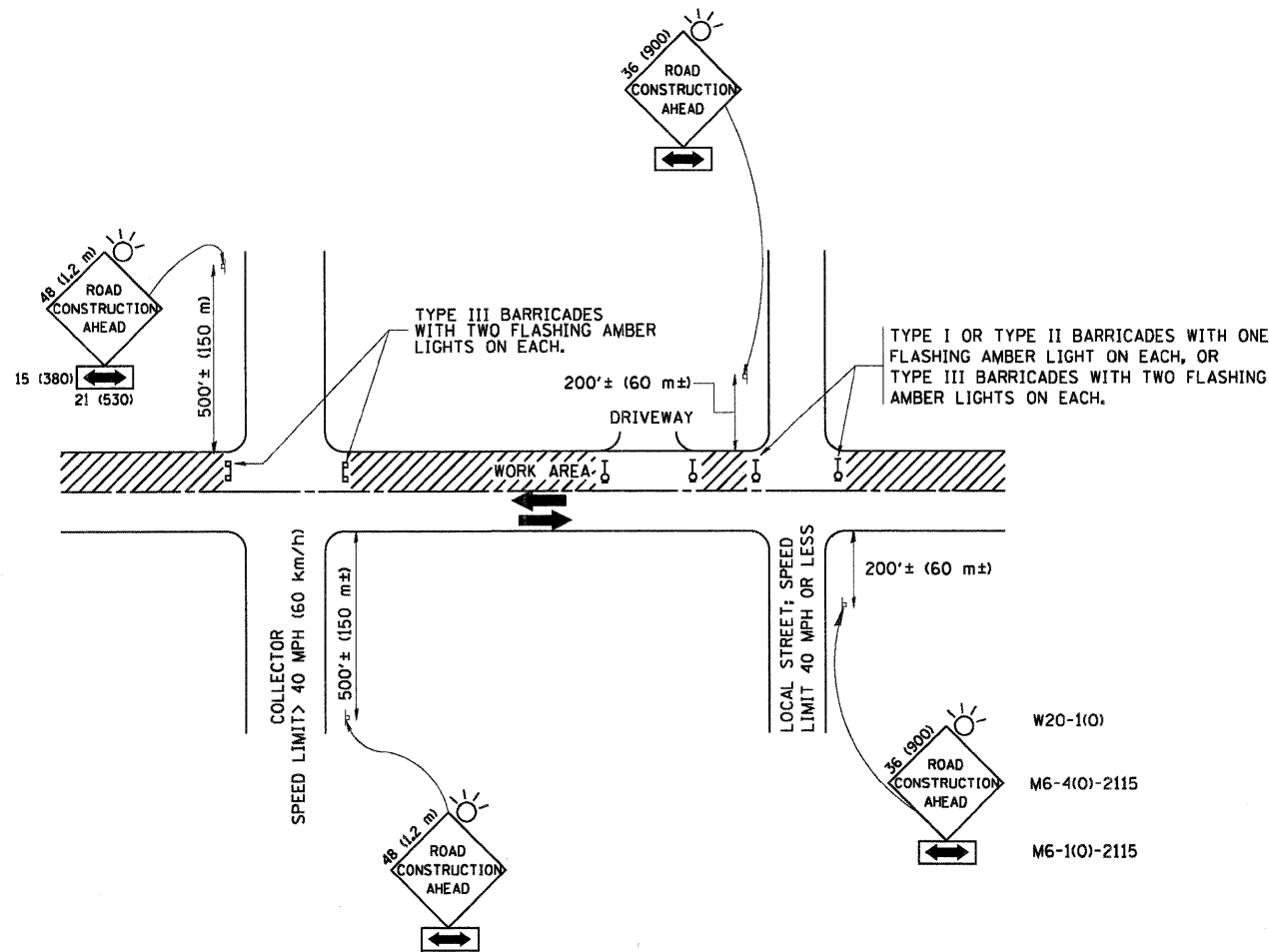
USER NAME = nporris	DESIGNED -	REVISED - 2/15/12
PLOT SCALE = AS SHOWN	DRAWN -	REVISED -
PLOT DATE = 2/14/2012	CHECKED -	REVISED -
	DATE - 2/3/12	REVISED -

**STATE OF ILLINOIS
DEPARTMENT OF TRANSPORTATION**

PROPOSED PLAN			
WASHINGTON ELEMENTARY SCHOOL			
SCALE: AS SHOWN	SHEET NO. 21 OF 23 SHEETS	STA.	TO STA.

RT.	SECTION	COUNTY	TOTAL SHEETS	SHEET NO.
	10-00179-00-ST	KANE	23	21
CONTRACT NO. 63675				
FED. ROAD DIST. NO. 1 ILLINOIS FED. AID PROJECT				

FILE NAME = W:\Projects\2010\100031 Elgin\Referto\Acadd\Civil\Ngn\Shet\DT-TC10.dgn



TRAFFIC CONTROL AND PROTECTION FOR SIDE ROADS, INTERSECTIONS, AND DRIVEWAYS

NOTES:

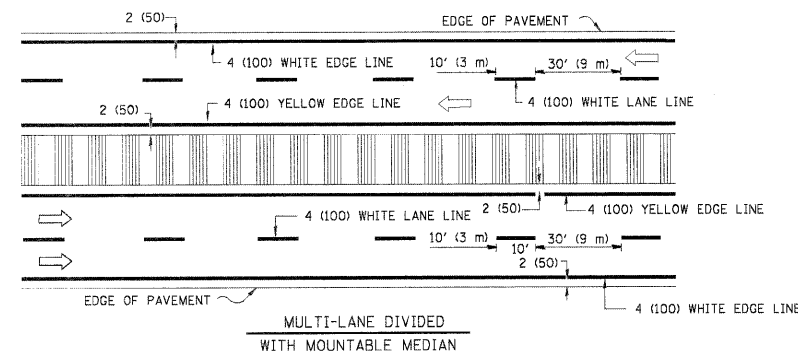
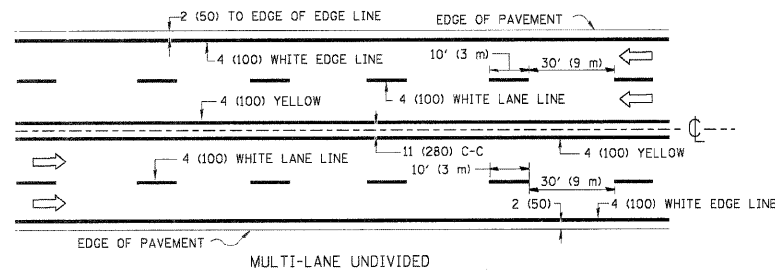
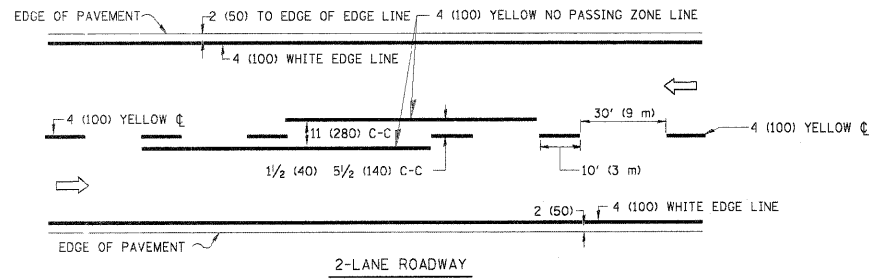
- A. FOR NO LANE RESTRICTION ON THE SIDE ROAD OR DRIVEWAYS
1. SIDE ROAD WITH A SPEED LIMIT OF 40 MPH (60 km/h) OR LESS AS SHOWN ON THE DRAWING AND AS DIRECTED BY THE ENGINEER:
- a) ONE ROAD CONSTRUCTION AHEAD SIGN 36 x 36 (900x900) WITH A FLASHER AND FLAG MOUNTED ON IT APPROXIMATELY 200' (60 m) IN ADVANCE OF THE MAIN ROUTE.
 - b) THE CLOSED PORTION OF THE MAIN ROUTE SHALL BE PROTECTED BY BLOCKING WITH TYPE I, TYPE II OR TYPE III BARRICADES, 1/3 OF THE CROSS SECTION OF THE CLOSED PORTION.
2. SIDE ROAD WITH A SPEED LIMIT GREATER THAN 40 MPH (60 km/h) AS SHOWN ON THE DRAWING AND AS DIRECTED BY THE ENGINEER:
- a) ONE ROAD CONSTRUCTION AHEAD SIGN 48 x 48 (1.2 m x 1.2 m) WITH A FLASHER MOUNTED ON IT APPROXIMATELY 500' (150 m) IN ADVANCE OF THE MAIN ROUTE.
 - b) THE CLOSED PORTION OF THE MAIN ROUTE SHALL BE PROTECTED BY BLOCKING WITH TYPE III BARRICADES, 1/2 OF THE CROSS SECTION OF THE CLOSED PORTION.
3. WHEN THE SIDE ROAD LIES BETWEEN THE BEGINNING OF THE MAINLINE SIGNING AND THE WORK ZONE, A SINGLE HEADED ARROW (M6-1) SHALL BE USED IN LIEU OF THE DOUBLE HEADED ARROW (M6-4).
- B. FOR A LANE CLOSURE ON A SIDE ROAD OR DRIVEWAY:
- USE APPLICABLE PORTIONS OF THE TYPICAL APPLICATION OF TRAFFIC CONTROL DEVICES (STD. 701501, STD. 701606 OR THE APPROPRIATE STANDARD). THE SPACING OF SIGNS AND BARRICADES SHALL BE ADJUSTED FOR FIELD CONDITIONS AS DIRECTED BY THE ENGINEER. THE DIRECTIONAL ARROW SHALL BE COVERED OR REMOVED WHEN NO LONGER CONSISTENT WITH THE SIDE ROAD LANE CLOSURE.
- C. ADVANCE WARNING SIGNS ARE TO BE OMITTED ON DRIVEWAY UNLESS OTHERWISE NOTED.
- D. THE TRAFFIC CONTROL AND PROTECTION FOR SIDE ROADS, INTERSECTIONS, AND DRIVEWAYS SHALL BE INCIDENTAL TO THE COST OF SPECIFIED TRAFFIC CONTROL STANDARDS OR ITEMS.

All dimensions are in millimeters (inches) unless otherwise shown.

FILE NAME =	USER NAME = geglienobt	DESIGNED - LHA	REVISED - J. OBERLE 10-18-95
W:\diststd\22x34\tcl0.dgn		DRAWN -	REVISED - A. HOUSEH 03-06-96
	PLOT SCALE = 50.000' / 1" IN.	CHECKED -	REVISED - A. HOUSEH 10-15-96
	PLOT DATE = 2/14/2012	DATE - 06-89	REVISED - T. RAMMACHER 01-06-00

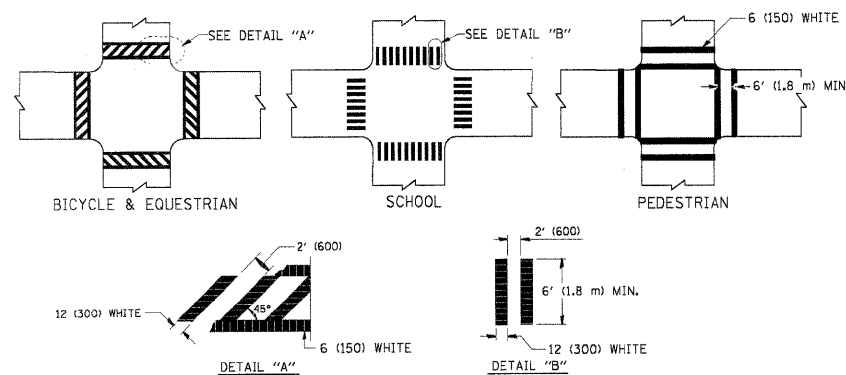
STATE OF ILLINOIS
DEPARTMENT OF TRANSPORTATION

TRAFFIC CONTROL AND PROTECTION FOR SIDE ROADS, INTERSECTIONS, AND DRIVEWAYS				RTE.	SECTION	COUNTY	TOTAL SHEETS	SHEET NO.
					10-00179-00-ST	KANE	23	22
				TC-10		CONTRACT NO. 63675		
SCALE: NONE	SHEET NO. 22 OF 23 SHEETS	STA.	TO STA.	FED. ROAD DIST. NO. 1 ILLINOIS FED. AID PROJECT				

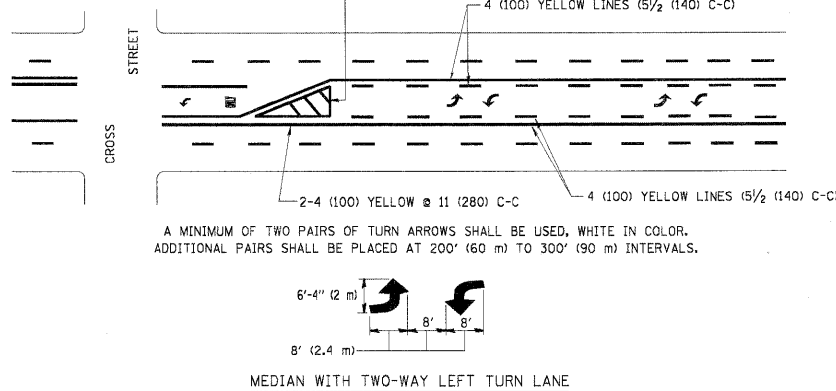
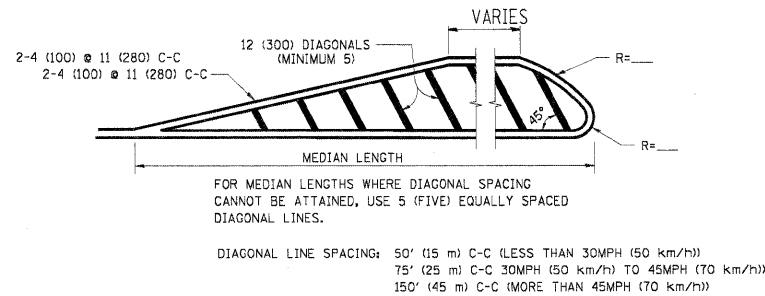
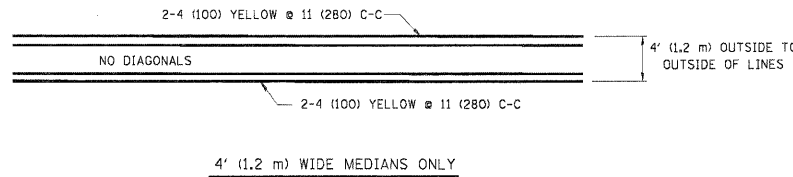


NOTE: MEDIANS WITH BARRIER CURB DO NOT REQUIRE AN EDGE LINE

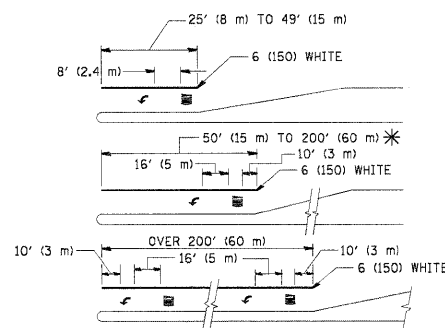
TYPICAL LANE AND EDGE LINE MARKING



TYPICAL CROSSWALK MARKING



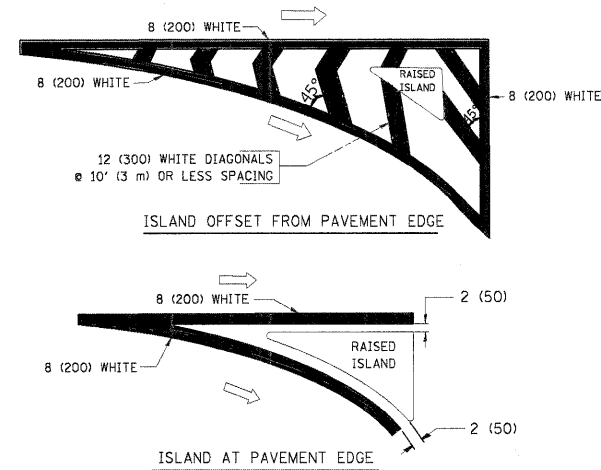
TYPICAL PAINTED MEDIAN MARKING



* TURN LANES IN EXCESS OF 400' (120 m) IN LENGTH MAY HAVE AN ADDITIONAL SET OF ARROW - "ONLY" INSTALLED MIDWAY BETWEEN THE OTHER TWO SETS OF ARROW - "ONLY".

TYPICAL LEFT (OR RIGHT) TURN LANE

TYPICAL TURN LANE MARKING



TYPICAL ISLAND MARKING

TYPE OF MARKING	WIDTH OF LINE	PATTERN	COLOR	SPACING / REMARKS
CENTERLINE ON 2 LANE PAVEMENT	4 (100)	SKIP-DASH	YELLOW	10' (3 m) LINE WITH 30' (9 m) SPACE
CENTERLINE ON MULTI-LANE UNDIVIDED PAVEMENT	2 @ 4 (100)	SOLID	YELLOW	11 (280) C-C
NO PASSING ZONE LINES: FOR ONE DIRECTION FOR BOTH DIRECTIONS	4 (100) 2 @ 4 (100)	SOLID SOLID	YELLOW YELLOW	5/2' (140) C-C FROM SKIP-DASH CENTERLINE 11 (280) C-C OMIT SKIP-DASH CENTERLINE BETWEEN
LANE LINES	4 (100) 5 (125) ON FREEWAYS	SKIP-DASH SKIP-DASH	WHITE WHITE	10' (3 m) LINE WITH 30' (9 m) SPACE
DOTTED LINES (EXTENSIONS OF CENTER, LANE OR TURN LANE MARKINGS)	SAME AS LINE BEING EXTENDED	SKIP-DASH	SAME AS LINE BEING EXTENDED	2' (600) LINE WITH 6' (1.8 m) SPACE
EDGE LINES	4 (100)	SOLID	YELLOW-LEFT WHITE-RIGHT	OUTLINE MOUNTABLE MEDIANS IN YELLOW; EDGE LINES ARE NOT USED NEXT TO BARRIER CURB
TURN LANE MARKINGS	6 (150) LINE; FULL SIZE LETTERS & SYMBOLS (8' (2.4m))	SOLID	WHITE	SEE TYPICAL TURN LANE MARKING DETAIL
TWO WAY LEFT TURN MARKING	2 @ 4 (100) EACH DIRECTION 8' (2.4m) LEFT ARROW	SKIP-DASH AND SOLID IN PAIRS	YELLOW WHITE	10' (3 m) LINE WITH 30' (9 m) SPACE FOR SKIP-DASH; 5/2' (140) C-C BETWEEN SOLID LINE AND SKIP-DASH LINE SEE TYPICAL TWO-WAY LEFT TURN MARKING DETAIL
CROSSWALK LINES (PEDESTRIAN) A. DIAGONALS (BIKE & EQUESTRIAN) B. LONGITUDINAL BARS (SCHOOL)	2 @ 6 (150) 12 (300) @ 45° 12 (300) @ 90°	SOLID SOLID SOLID	WHITE WHITE WHITE	NOT LESS THAN 6' (1.8 m) APART 2' (600) APART 2' (600) APART SEE TYPICAL CROSSWALK MARKING DETAILS.
STOP LINES	24 (600)	SOLID	WHITE	PLACE 4' (1.2 m) IN ADVANCE OF AND PARALLEL TO CROSSWALK, IF PRESENT. OTHERWISE, PLACE AT DESIRED STOPPING POINT, PARALLEL TO CROSSROAD CENTERLINE, WHERE POSSIBLE
PAINTED MEDIANS	2 @ 4 (100) WITH 12 (300) DIAGONALS @ 45° NO DIAGONALS USED FOR 4' (1.2 m) WIDE MEDIANS	SOLID	YELLOW; TWO WAY TRAFFIC WHITE; ONE WAY TRAFFIC	11 (280) C-C FOR THE DOUBLE LINE SEE TYPICAL PAINTED MEDIAN MARKING.
GORE MARKING AND CHANNELIZING LINES	8 (200) WITH 12 (300) DIAGONALS @ 45°	SOLID	WHITE	DIAGONALS: 15' (4.5 m) C-C (LESS THAN 30MPH (50 km/h)) 20' (6 m) C-C 30MPH (50 km/h) TO 45MPH (70 km/h) 30' (9 m) C-C (OVER 45MPH (70 km/h))
RAILROAD CROSSING	24 (600) TRANSVERSE LINES; "RR" IS 6' (1.8 m) LETTERS; 16 (400) LINE FOR "X"	SOLID	WHITE	SEE STATE STANDARD 780001 AREA OF: "R"=3.6 SQ. FT. (0.33 m²) EACH "X"=54.0 SQ. FT. (5.0 m²)
SHOULDER DIAGONALS	12 (300) @ 45°	SOLID	WHITE - RIGHT YELLOW - LEFT	50' (15 m) C-C (LESS THAN 30MPH (50 km/h)) 75' (25 m) C-C 30 MPH (50 km/h) TO 45MPH (70 km/h) 150' (45 m) C-C (OVER 45MPH (70 km/h))

FOR FURTHER DETAILS ON PAVEMENT MARKING REFER TO STANDARD SPECIFICATIONS FOR ROAD AND BRIDGE CONSTRUCTION AND STATE STANDARD 780001.

All dimensions are in inches (millimeters) unless otherwise shown.

FILE NAME = W:\Projects\2010\1000231 Elgin\SafeRte\Add\Civil\Dgn\Shst\DT-TC13.dgn

FILE NAME =	USER NAME = drivakoegn	DESIGNED = EVERS	REVISED -T. RAMMACHER 10-27-94
as:\pw\work\p\w\dot\drivakoegn\d0108315\to13.dgn		DRAWN	REVISED -C. JUCIUS 09-09-09
	PLOT SCALE = 5/8"=1' IN.	CHECKED	REVISED
	PLOT DATE = 2/14/2012	DATE = 03-19-90	REVISED

STATE OF ILLINOIS DEPARTMENT OF TRANSPORTATION

DISTRICT ONE TYPICAL PAVEMENT MARKINGS

SCALE: NONE SHEET NO. 23 OF 23 SHEETS STA. TO STA.

RT.	SECTION	COUNTY	TOTAL SHEETS	SHEET NO.
	10-00179-00-ST	KANE	23	23
	TC-13	CONTRACT		NO.63675
	FED. ROAD DIST. NO. 1 [ILLINOIS] FED. AID PROJECT			