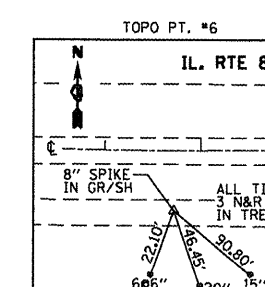
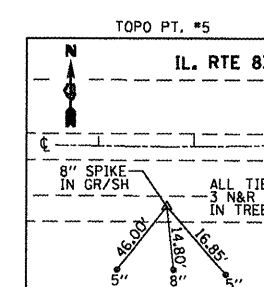
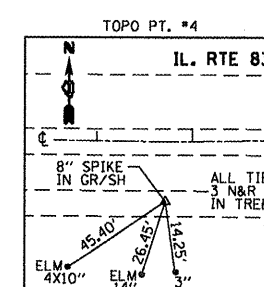
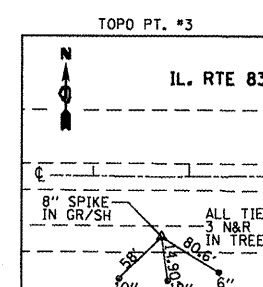
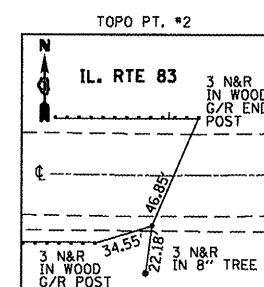
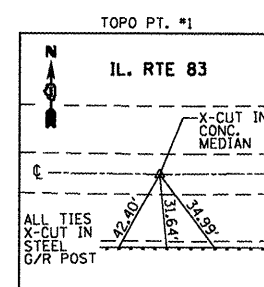
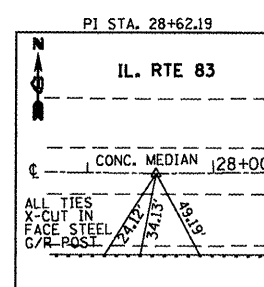
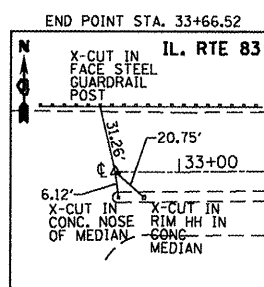
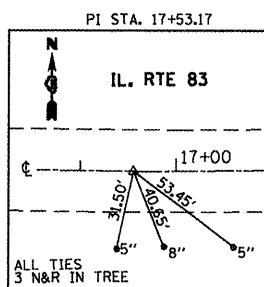
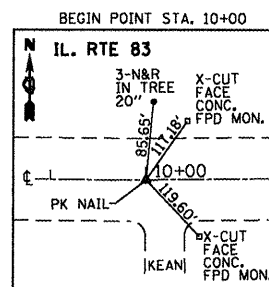
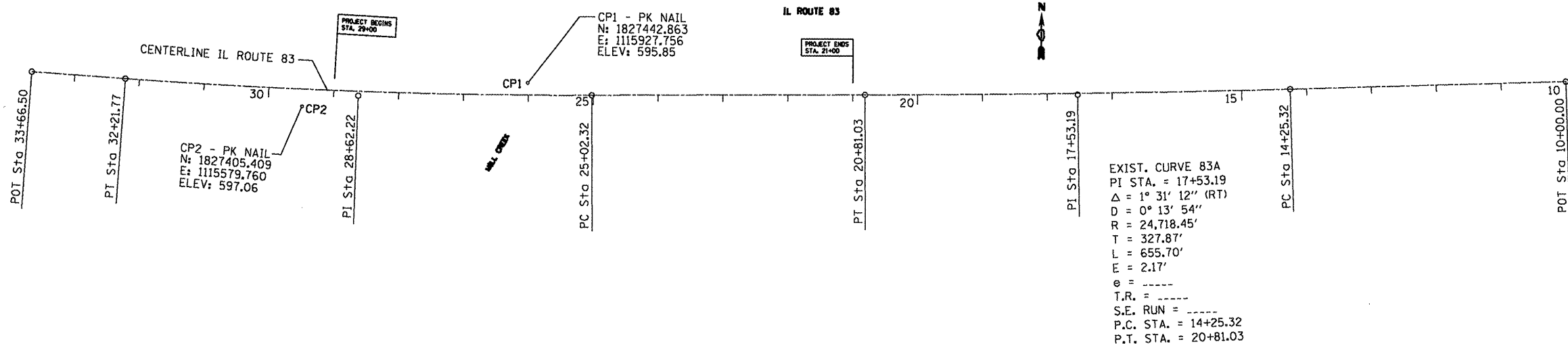


EXIST. CURVE 83B  
 PI STA. = 28+62.22  
 $\Delta = 4^\circ 19' 16''$  (RT)  
 D = 0° 36' 02"  
 R = 9,539.37'  
 T = 359.90'  
 L = 719.46'  
 E = 6.79'  
 e = -----  
 T.R. = -----  
 S.E. RUN = -----  
 P.C. STA. = 25+02.32  
 P.T. STA. = 32+21.77



**CONTROL POINT #1**

PK NAIL  
 STA. 26+01.03  
 N=1827442.863  
 E=1115927.756  
 ELEV.=595.85

**CONTROL POINT #2**

PK NAIL  
 STA. 29+47.92  
 N=1827405.409  
 E=1115579.760  
 ELEV. = 597.06

ALIGNMENT COORDINATES - IL 83			
	STATION	N	E
POT	10+00.00	1827451.4274	1117528.3374
PC	14+25.32	1827438.0386	1117103.2245
PI	17+53.19	1827427.7175	1116775.5170
PT	20+81.03	1827426.0921	1116447.6510
PC	25+02.32	1827424.0035	1116026.3653
PI	28+62.22	1827422.2193	1115666.4697
PT	32+21.77	1827447.5577	1115307.4628
POT	33+66.50	1827457.7468	1115163.0992

**BENCHMARK #103**

ELEV. 189.070  
 □ -CUT IN OF HW N.E. COR  
 BIKE/HORSE TRAIL & KEAN AVE.  
 ±5 M. NORTH OF ENT.  
 TO ELEV. 189.085

**BENCHMARK #2**

ELEV. 612.14  
 STATE OF ILL. BENCHMARK  
 DISK IN SW WINGWALL OF  
 IL. 83 BRIDGE OVER US 45

**BENCHMARK #3**

ELEV. 604.23  
 □ -CUT CENTER  
 CONC. MEDIAN  
 @ STA. 32+00

**BENCHMARK #4**

ELEV. 596.28  
 □ -CUT SE END  
 CONC. BRIDGE,  
 IL. 83 BRIDGE  
 OVER MILL CREEK

**BENCHMARK #5**

ELEV. 595.83  
 □ -CUT WEST E/P  
 IL. 83 @ STA. 21+00

**BENCHMARK #6**

ELEV. 595.51  
 □ -CUT WEST E/P  
 IL. 83 @ STA. 15+00

FILE NAME =	USER NAME = gelbanjr	DESIGNED -	REVISED -	<b>STATE OF ILLINOIS DEPARTMENT OF TRANSPORTATION</b>	<b>ILLINOIS ROUTE 83 OVER MILL CREEK ALIGNMENT, TIES AND BENCHMARKS</b>	F.A.P. RTE.	SECTION	COUNTY	TOTAL SHEETS	SHEET NO.	
es:\pw\work\p101dot\gelbanjr\d8201547\PI101	98-sh-t-ATB.dgn	DRAWN -	REVISED -			344	102Y-A-B	COOK	31	6	
	PLOT SCALE = 200.0000' / in.	CHECKED -	REVISED -			CONTRACT NO. 62339					
	PLOT DATE = 2/23/2012	DATE -	REVISED -			ILLINOIS FED. AID PROJECT					