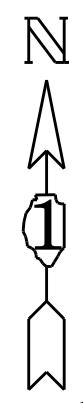
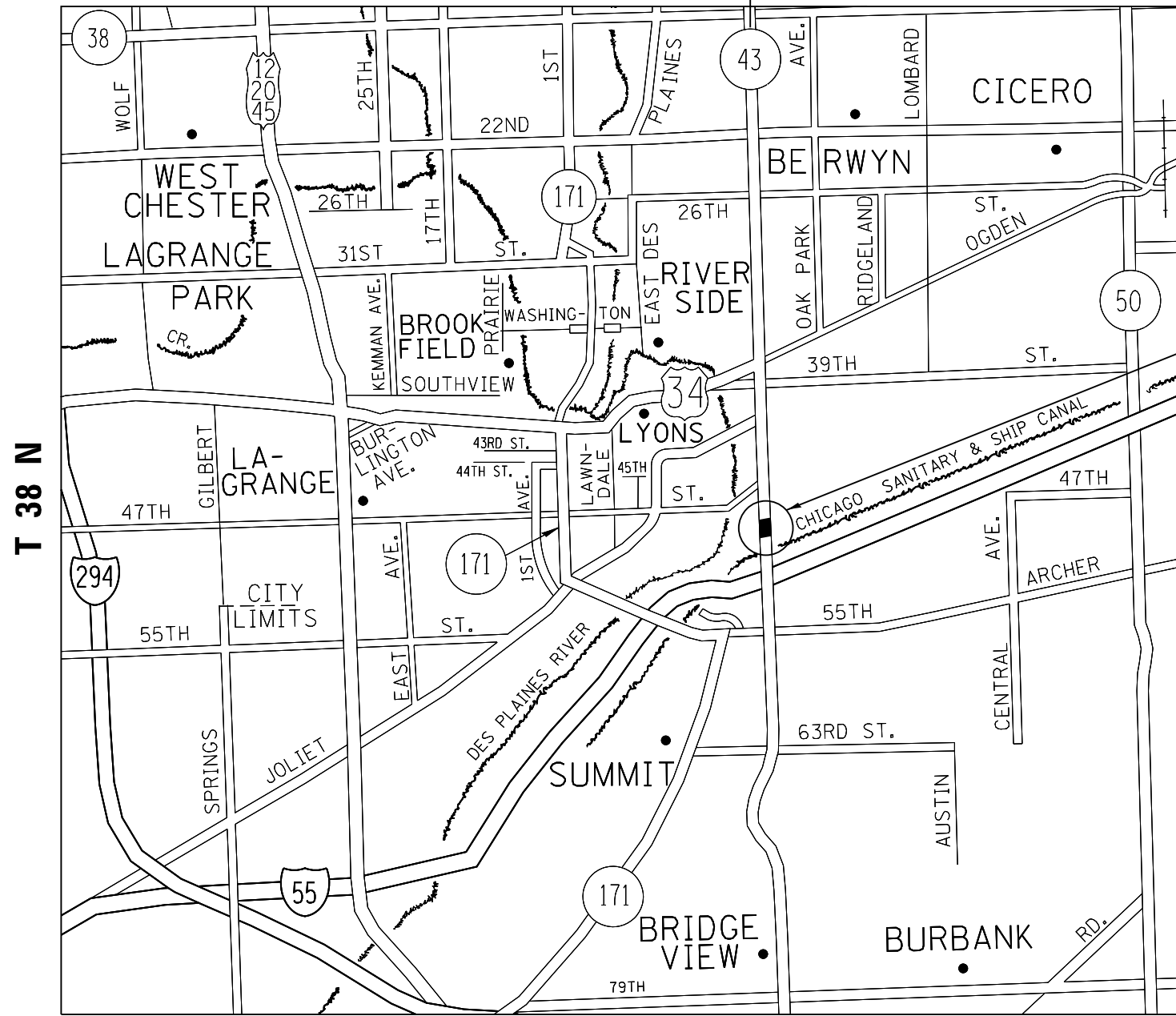


R 12 E R 13 E



LOCATION OF IMPROVEMENT
SN 016-0314, LOCATION 1

TRAFFIC DATA
2009 ADT = 38,000
POSTED SPEED LIMIT = 40 MPH

STICKNEY TOWNSHIP

* = FAP 348 & 358

FILE NAME =	USER NAME = pyrzenowski	DESIGNED -	REVISED -	STATE OF ILLINOIS DEPARTMENT OF TRANSPORTATION	LOCATION MAP (SN 016-0314) IL 43 NB (HARLEM AVE.) OVER SN & MWRD (SLUDGE) RR	F.A.P. RTE.	SECTION	COUNTY	TOTAL SHEETS	SHEET NO.	
et:\pw\work\p\dot\pyrzenowski\bd028349	ND162511-sht-plan.dgn	DRAWN -	REVISED -			*	2012-032BR	COOK	10	4	
	PLOT SCALE = 100.0000' / in.	CHECKED -	REVISED -			CONTRACT NO. 60T55					
	PLOT DATE = 5/4/2012	DATE -	REVISED -			ILLINOIS FED. AID PROJECT					