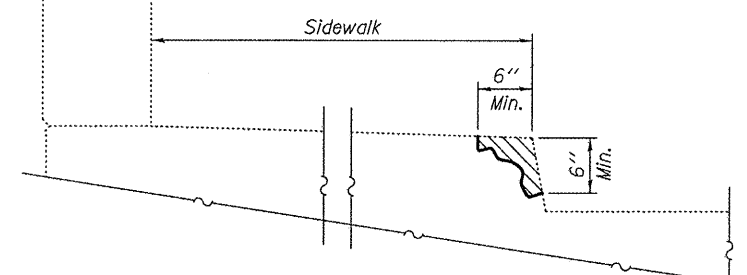


- Deck Slab Repair (Partial)
- Structural Repair of Concrete ≤ 5 inches
- Deck Slab Repair (Full Depth, Type II)

PLAN

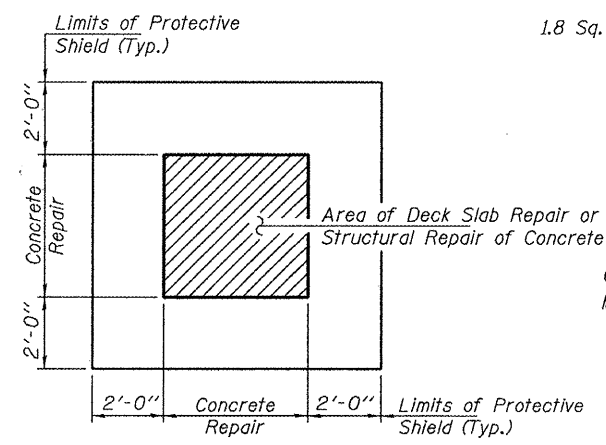
* Entrance to CTA shall be maintained at all times. Use Standard 701801.

Note A:
 Remove the existing manhole frame and cover and the adjacent deteriorated concrete sidewalk. The anticipated removal limits for concrete removal are shown on this sheet. Install at the same location a rectangular 30" x 36" manhole frame, bolted/gasketed lid with steel butt hinge. The reference for the manhole is Neenah R-6665-IHH or equivalent manhole from a different manufacturer. The work for finishing and installing this manhole shall be paid for at the contract unit price Each, for ~~Manhole, Special, Frames and Lids, Special~~. The manhole frame and lid shall be installed as per the manufacturer's recommendations. The lid shall be installed so that the lid is flush with the surrounding concrete sidewalk.

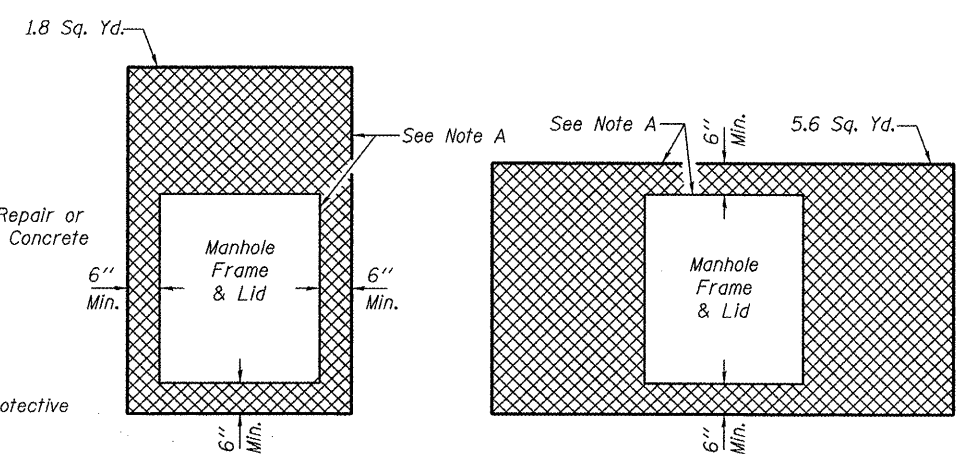


CURB REPAIR DETAIL

(Structural Repair of Concrete ≤ 5 inches)
 (32 linear feet on S. Appr. Pavement)
 (12 linear feet on N. Appr. Pavement)

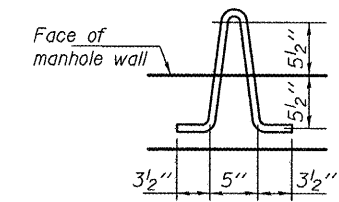


TYPICAL PROTECTIVE SHIELD DETAIL



REPAIR ON NORTH APPROACH PAVEMENT

REPAIR ON SOUTH APPROACH PAVEMENT



PULLING IRON DETAIL

3/4" φ Mild steel. Hot dip galvanize after fabrication. 5/8" inside radius typ. for all bends

BARS b2(E) THRU b4(E)

Bar	A
b2(E)	5'-0"
b3(E)	4'-6"
b4(E)	3'-3"

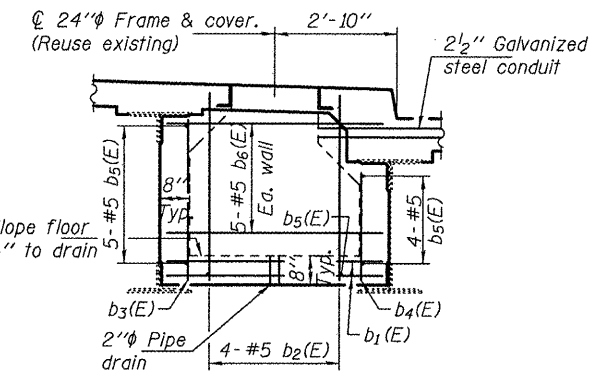
Note: Field cut longitudinal bars and fan transverse bars over manhole opening.

24" φ MANHOLE BILL OF MATERIAL

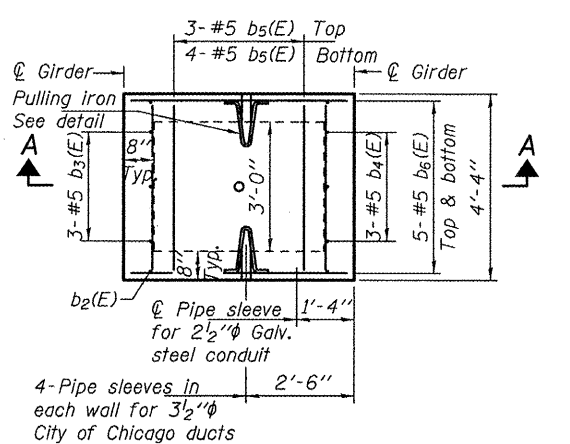
Bar	No.	Size	Length	Shape
b2(E)	8	#5	6'-0"	L
b3(E)	3	#5	5'-6"	L
b4(E)	3	#6	4'-3"	L
b5(E)	16	#5	4'-0"	—
b6(E)	20	#5	5'-0"	—
Reinforcement Bars, Epoxy Coated			Pound	250

BILL OF MATERIAL

ITEM	UNIT	QUANTITY
Deck Slab Repair (Partial)	Sq. Yd.	1.8
Structural Repair of Concrete ≤ 5 inches	Sq. Ft.	47
Deck Slab Repair (Full Depth, Type II)	Sq. Yd.	7.4
Manhole, Special, Frames and Lids, Special	Each	2



SECTION A-A



PLAN 24" φ MANHOLE

Cost of concrete included with Concrete Superstructure

DESIGNED - MKC	EXAMINED - <i>Jay F. Hill</i>	DATE - MAY 9, 2012
CHECKED - ---	ENGINEER OF STRUCTURAL SERVICES	
DRAWN - Kyle M. Steffen	PASSED - <i>D. Carl Fisher</i>	
CHECKED - MKC	ENGINEER OF BRIDGES AND STRUCTURES	

STATE OF ILLINOIS
 DEPARTMENT OF TRANSPORTATION

DECK PATCHING DETAILS
 SN 016-0235
 SHEET NO. 6 OF 10 SHEETS

F.A.I. RTE. 290	SECTION 3-B-10BR(11)	COUNTY COOK	CONTRACT NO. 60T39
TOTAL SHEETS 26		SHEET NO. 15	
ILLINOIS FED. AID PROJECT			