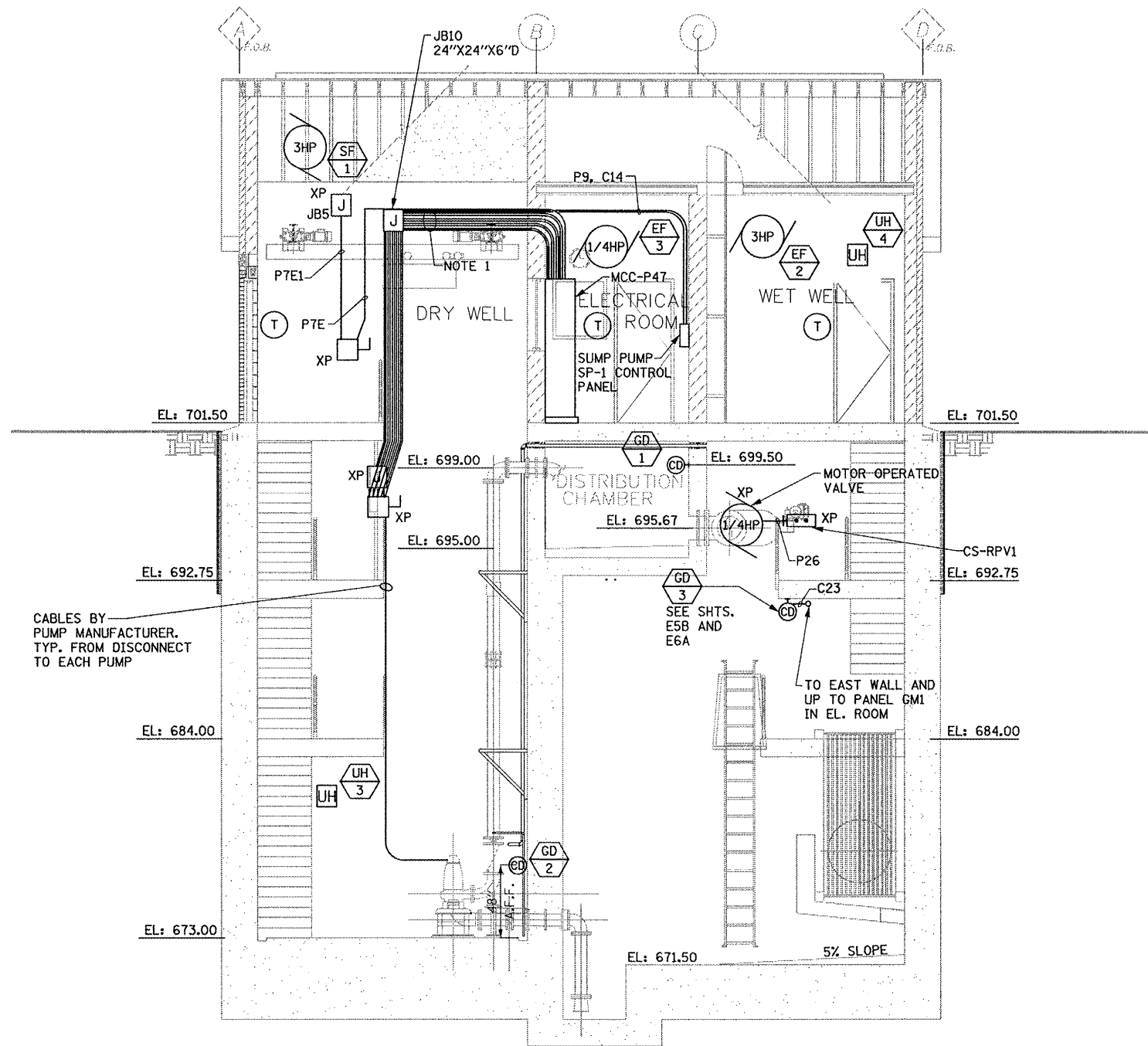


1 DRY WELL SECTION ELEVATION LOOKING NORTH  
SCALE: 1/4" = 1'-0"



2 PUMP STATION SECTION ELEVATION LOOKING WEST  
SCALE: 1/4" = 1'-0"

**NOTES:**

1. FOR DETAILED WIRING/CONDUIT RUNS, SEE SHEETS E5, E5A AND E5B.
2. WIRED TO SUMP PUMP CONTROL PANEL.
3. ALL DISCONNECTS AND PUSH BUTTONS SHALL BE INSTALLED APPROXIMATELY 48" ABOVE FINISHED FLOOR ON UNISTRUTS.
4. ELECTRICAL INSTALLATION AND EQUIPMENT WITHIN ENTIRE WET AND DRY WELL AREA SHALL BE PER N.E.C. CLASS I DIV. 2.
5. LSHH = 672.50, LSH = PUMP TOP ELEV OR AS PER PUMP MANUFACTURER., LSL = PUMP BOTTOM ELEV. + 10" OR AS PER PUMP MANUFACTURER



E6

<b>KNIGHT</b> Engineers & Architects	USER NAME = *USER*	DESIGNED - MCP	REVISED - ADDENDUM A 5-23-12	<b>STATE OF ILLINOIS</b> <b>DEPARTMENT OF TRANSPORTATION</b>	<b>PUMP STATION NO. 47 POWER SECTION ELEVATIONS</b>	F.A.P. RTE.	SECTION	COUNTY	TOTAL SHEETS	SHEET NO.
	PLOT SCALE = *SCALE*	DRAWN - MLB	REVISED -			338/IL 59	2011-035-1	DUPAGE	181	165
	PLOT DATE = *DATE*	CHECKED - MCP	REVISED -			CONTRACT NO. 60P41				
		DATE 03-22-2012	REVISED -			ILLINOIS FED. AID PROJECT				
				SCALE:	SHEET NO. OF SHEETS	STA.	TO STA.			