

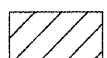
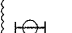
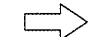



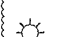
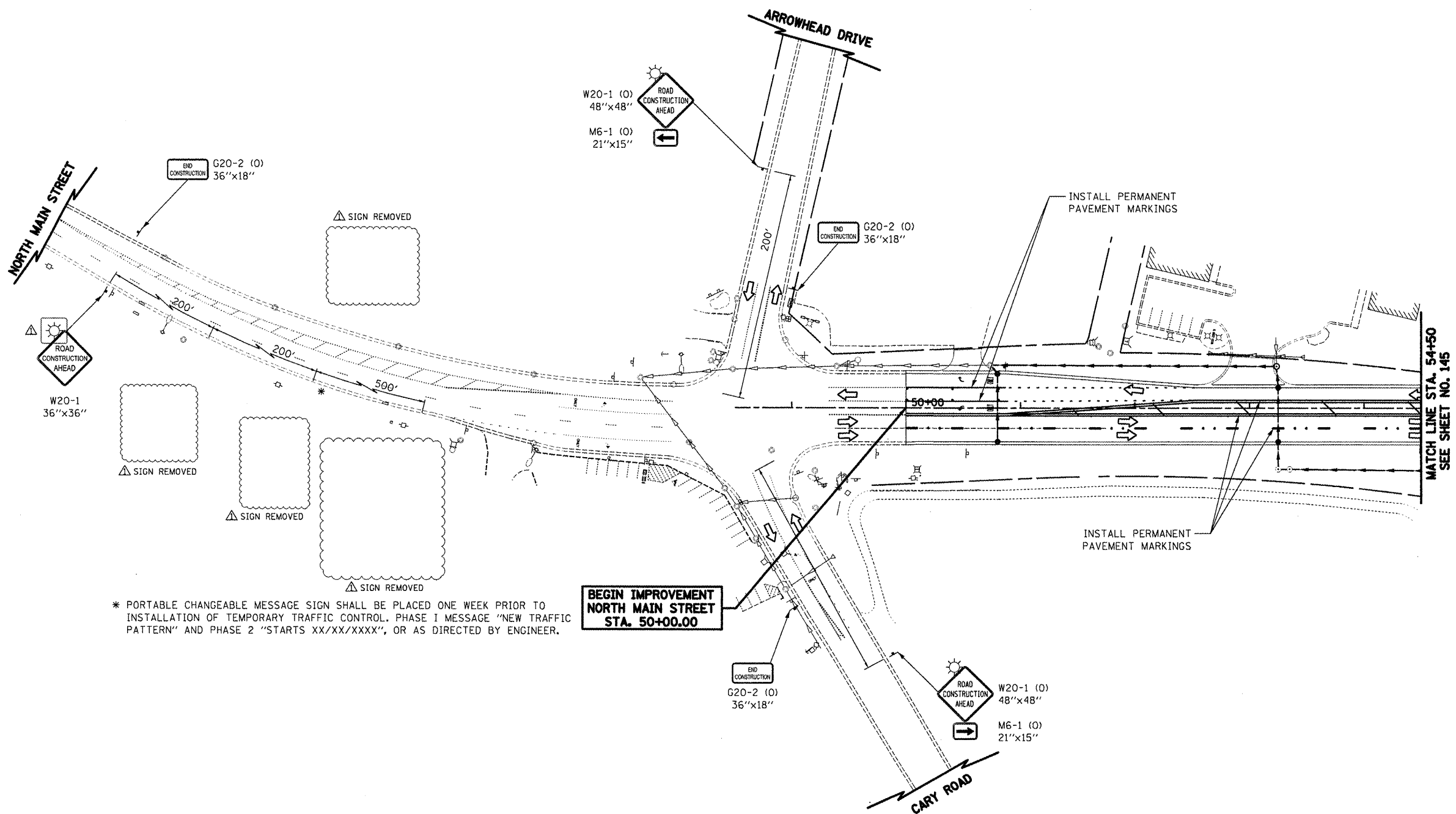


# LEGEND

	TEMPORARY PAVEMENT		DRUM WITH STEADY BURN BI-DIRECTIONAL LIGHT
	CONSTRUCTION WORK ZONE		TYPE I OR II BARRICADE WITH FLASHING LIGHTS
	DIRECTION OF TRAFFIC FLOW		DOUBLE VERTICAL PANEL WITH STEADY BURN BI-DIRECTIONAL LIGHT
	ARROW BOARD		TYPE III BARRICADE WITH FLASHING LIGHTS
			FLASHING MONO-DIRECTIONAL LIGHT



\* PORTABLE CHANGEABLE MESSAGE SIGN SHALL BE PLACED ONE WEEK PRIOR TO INSTALLATION OF TEMPORARY TRAFFIC CONTROL. PHASE I MESSAGE "NEW TRAFFIC PATTERN" AND PHASE 2 "STARTS XX/XX/XXXX", OR AS DIRECTED BY ENGINEER.

BEGIN IMPROVEMENT  
NORTH MAIN STREET  
STA. 50+00.00

MATCH LINE STA. 54+50  
SEE SHEET NO. 145

NORTH MAIN STREET



FILE NAME =	USER NAME = ctb	DESIGNED - KWH	REVISED - 5/21/2012
...\\08-MOT\DI60F72-sh-t-MOT-42.dgn		DRAWN - AKW	REVISED -
		CHECKED - GAB	REVISED -
		DATE - 5/3/2012	REVISED -

STATE OF ILLINOIS  
DEPARTMENT OF TRANSPORTATION

MAINTENANCE OF TRAFFIC - STAGE 4C

SCALE: 1" = 50' SHEET NO. 42 OF 47 SHEETS STA. 50+00 TO STA. 54+50

O.R. RTE.	SECTION	COUNTY	TOTAL SHEETS	SHEET NO.
0003	18A-2	MCHENRY	825	144
CONTRACT NO. 60F72				
FED. ROAD DIST. NO. 1 [ILLINOIS] FED. AID PROJECT				