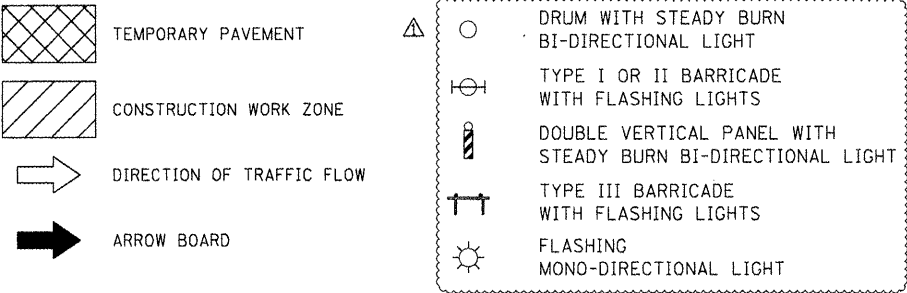
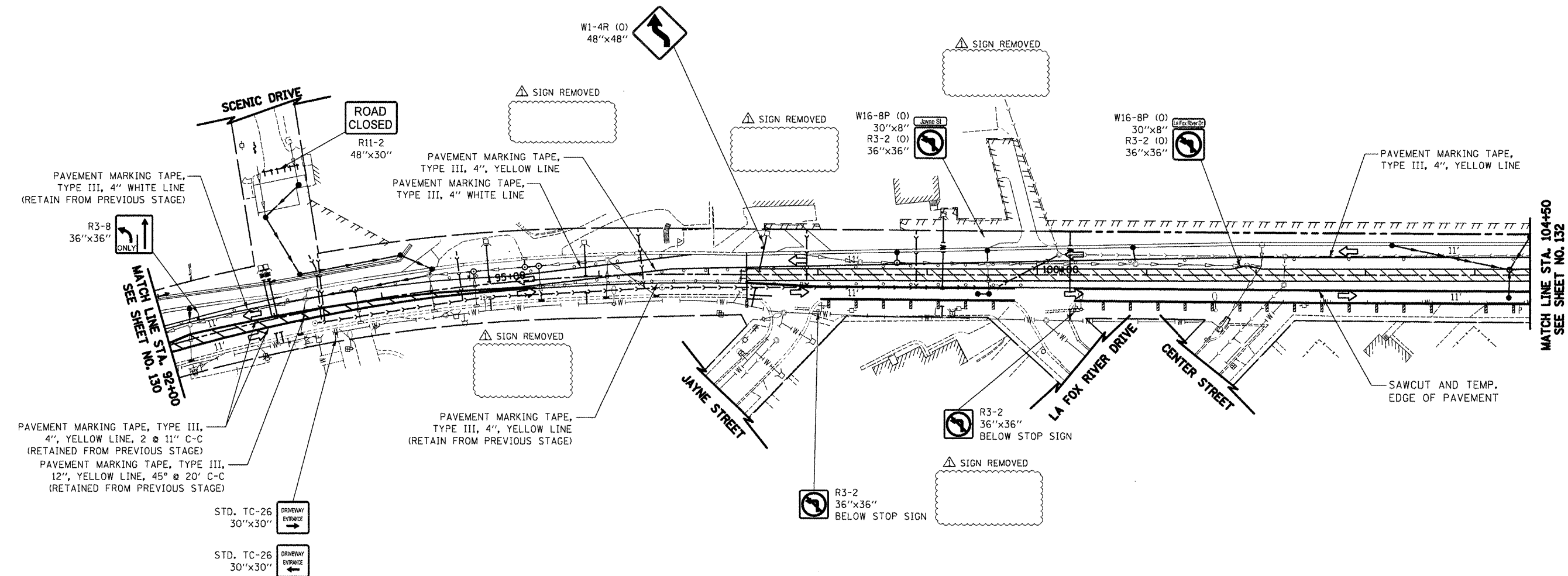


LEGEND



NOTE:
USE DAILY LANE CLOSURES FOR INSTALLATION OF STORM SEWER AND PLACEMENT OF PAVEMENT PATCHING. TRAFFIC PATTERN SHALL BE RETURNED TO THAT SHOWN PRIOR TO THE END OF DAILY CONSTRUCTION OPERATIONS.



ILLINOIS ROUTE 31



FILE NAME =	USER NAME = ctb	DESIGNED - KWH	REVISED - 5/21/2012	STATE OF ILLINOIS DEPARTMENT OF TRANSPORTATION	MAINTENANCE OF TRAFFIC - STAGE 3C	O.R. RTE.	SECTION	COUNTY	TOTAL SHEETS	SHEET NO.
...\\08-MOT\0160F72-sh1-MOT-29.dgn		DRAWN - AKW	REVISED -			0003	18A-2	MCHENRY	825	131
	PLOT SCALE = 100.0000' / 1"	CHECKED - GAB	REVISED -			CONTRACT NO. 60F72				
	PLOT DATE = 5/24/2012	DATE - 5/3/2012	REVISED -			FED. ROAD DIST. NO. 1 ILLINOIS FED. AID PROJECT				