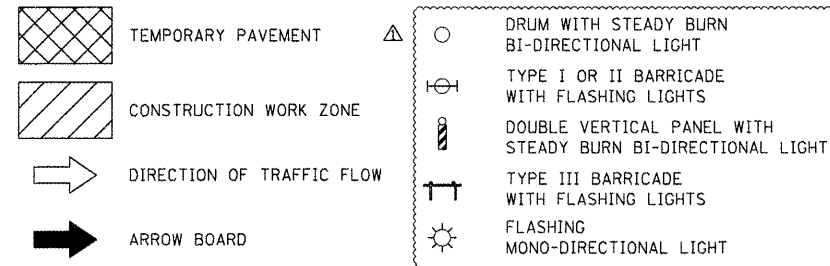
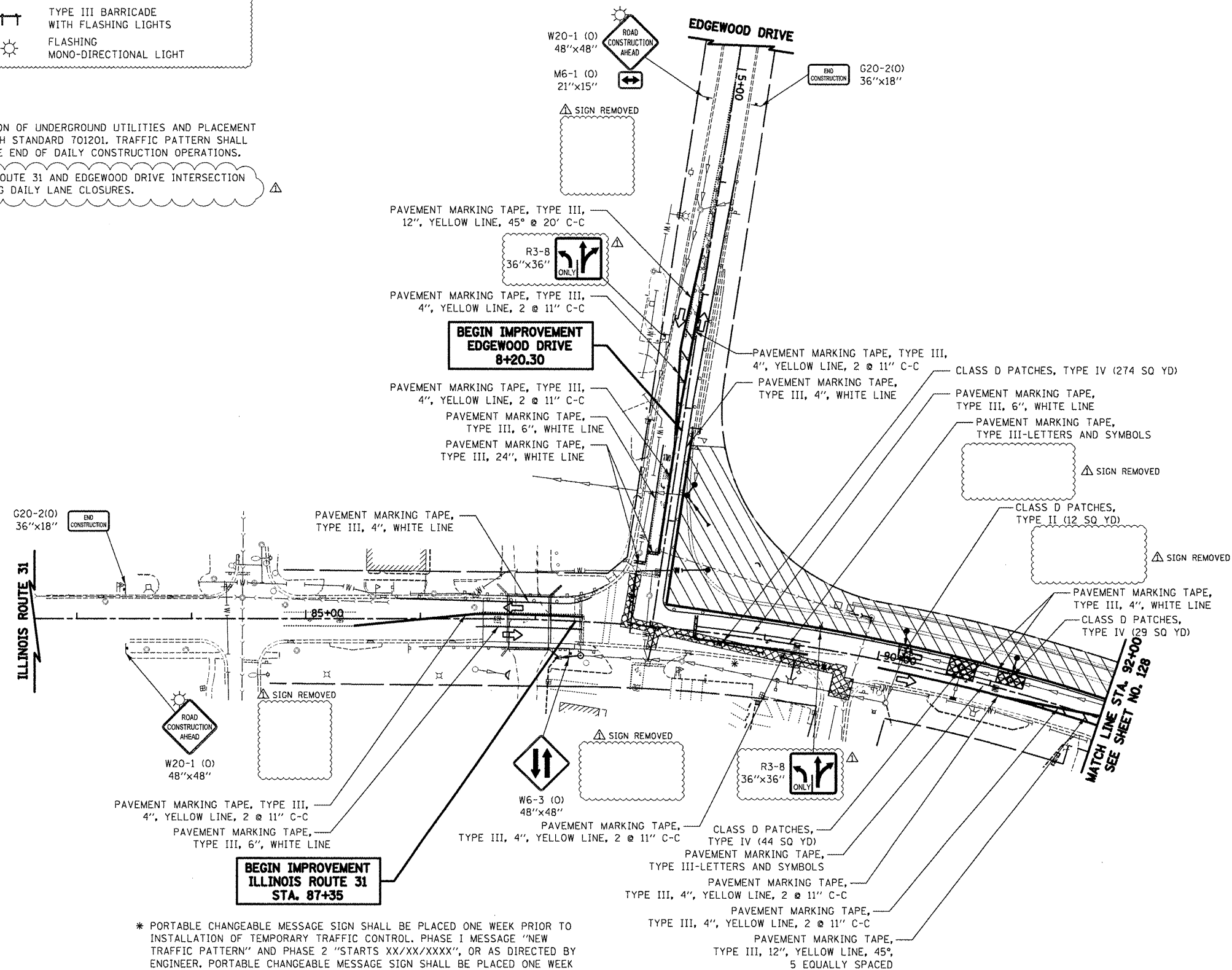


LEGEND



NOTE:
USE DAILY LANE CLOSURES FOR INSTALLATION OF UNDERGROUND UTILITIES AND PLACEMENT OF PAVEMENT PATCHING IN ACCORDANCE WITH STANDARD 701201. TRAFFIC PATTERN SHALL BE RETURNED TO THAT SHOWN PRIOR TO THE END OF DAILY CONSTRUCTION OPERATIONS.

INSTALLATION OF WATERMAIN AT ILLINOIS ROUTE 31 AND EDGEWOOD DRIVE INTERSECTION TO BE INSTALLED PRIOR TO STAGE 3B USING DAILY LANE CLOSURES.



* PORTABLE CHANGEABLE MESSAGE SIGN SHALL BE PLACED ONE WEEK PRIOR TO INSTALLATION OF TEMPORARY TRAFFIC CONTROL. PHASE 1 MESSAGE "NEW TRAFFIC PATTERN" AND PHASE 2 "STARTS XX/XX/XXXX", OR AS DIRECTED BY ENGINEER. PORTABLE CHANGEABLE MESSAGE SIGN SHALL BE PLACED ONE WEEK PRIOR TO CLOSURE OF HUNTINGTON ROAD. PHASE 1 MESSAGE "HUNTINGTON ROAD CLOSED" AND PHASE 2 "STARTS XX/XX/XXXX", OR AS DIRECTED BY ENGINEER.

ILLINOIS ROUTE 31



ADDENDUM REV. 5/21/2012 JES

FILE NAME =	USER NAME = ctb	DESIGNED - KWH	REVISED - 5/21/2012
...\\08-MOT\160F72-shr-MOT-25.dgn		DRAWN - AKW	REVISED -
	PLOT SCALE = 100.0000' / 1"	CHECKED - GAB	REVISED -
	PLOT DATE = 5/24/2012	DATE - 5/3/2012	REVISED -

STATE OF ILLINOIS
DEPARTMENT OF TRANSPORTATION

MAINTENANCE OF TRAFFIC - STAGE 3B

SCALE: 1" = 50' SHEET NO. 25 OF 47 SHEETS STA. 87+35 TO STA. 92+00

O.R. RTE.	SECTION	COUNTY	TOTAL SHEETS	SHEET NO.
0003	18A-2	MCHENRY	825	127
CONTRACT NO. 60F72				
FED. ROAD DIST. NO. 1 ILLINOIS FED. AID PROJECT				