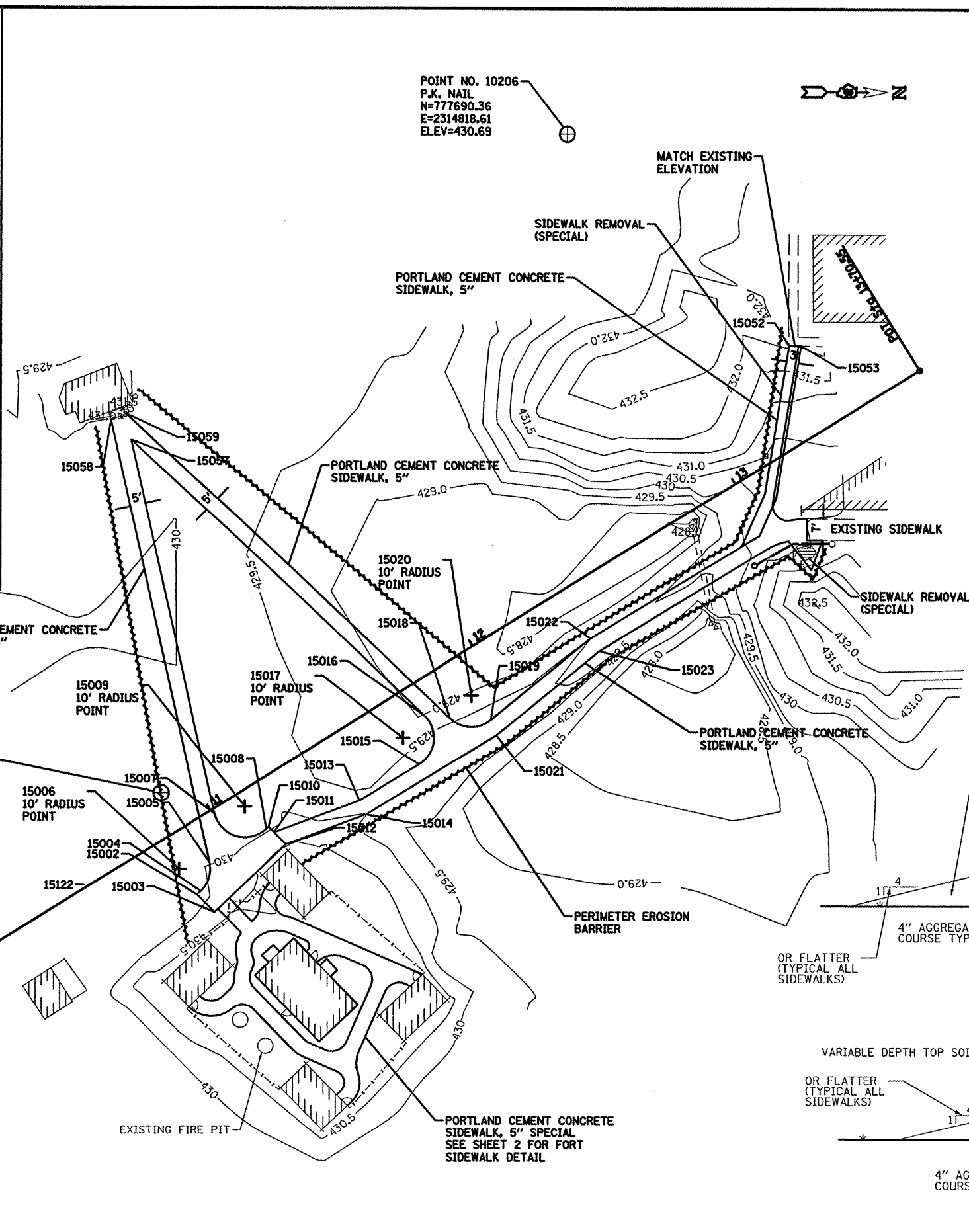


BENCHMARK "A": CHISELED "A" IN STOP LIGHT BASE LOCATED AT THE ENTRANCE OFF OF ILLINOIS ROUTE 3 ASSUMED ELEV. = 440.59



Point No.	Northing (Y)	Easting (X)	Elevation	Station	Offset
15002	777438.03	2314704.54	430.00	10+83.47	28.81
15003	777443.79	2314698.99	430.15	10+81.80	20.98
15004	777444.93	2314700.17	430.05	10+83.41	20.64
15005	777454.30	2314702.98	430.00	10+90.76	14.18
15006	777452.13	2314693.22		10+81.33	10.86
15007	777470.29	2314704.54	430.10	11+00.55	1.45
15008	777465.26	2314721.25	430.25	11+12.06	14.55
15009	777472.46	2314714.30		11+09.98	4.77
15010	777466.01	2314722.02	430.25	11+13.10	14.33
15011	777464.18	2314723.78	430.30	11+13.63	16.82
15012	777460.25	2314727.57	430.40	11+14.77	22.15
15013	777474.48	2314751.48	430.50	11+42.58	22.74
15014	777469.96	2314753.67	430.60	11+42.05	27.74
15015	777486.28	2314770.89	430.50	11+65.30	23.00
15016	777502.12	2314772.54	430.50	11+75.08	10.44
15017	777494.83	2314765.69		11+65.41	13.00
15018	777501.08	2314780.94	430.40	11+81.66	15.77
15019	777500.60	2314794.08	430.50	11+92.55	23.13
15020	777508.37	2314787.79		11+91.33	13.21
15021	777495.64	2314795.90	430.60	11+91.47	28.30
15022	777526.70	2314826.34	430.30	12+33.73	18.07
15023	777522.60	2314829.23	430.40	12+34.02	23.07
15024	777556.61	2314875.11	430.20	12+90.95	18.51
15025	777555.78	2314883.32	430.30	12+97.47	23.56
15026	777538.73	2314893.78		12+97.32	43.56
15027	777558.42	2314890.24	430.35	13+04.74	24.99
15028	777548.97	2314897.64	430.59	13+06.02	36.92
15029	777558.75	2314901.22		13+14.23	30.52
15030	777565.78	2314896.22		13+13.71	21.91
15031	777565.78	2314895.88	430.72	13+13.43	21.73
15032	777545.78	2314895.71		13+02.69	38.60
15033	777565.38	2314891.69	430.21	13+09.66	19.86
15052	777622.48	2314890.34		13+38.74	-29.30
15053	777622.42	2314893.37		13+41.28	-27.65
15054	777573.78	2314882.51	429.94	13+06.32	7.87
15055	777570.92	2314885.09	430.00	13+06.99	11.66
15057	777591.29	2314677.58	430.10	11+41.73	-115.48
15058	777597.70	2314671.03	429.75	11+39.57	-124.39
15059	777599.71	2314675.91	429.65	11+44.78	-123.51
15060	777570.28	2314890.69		13+11.40	15.17

