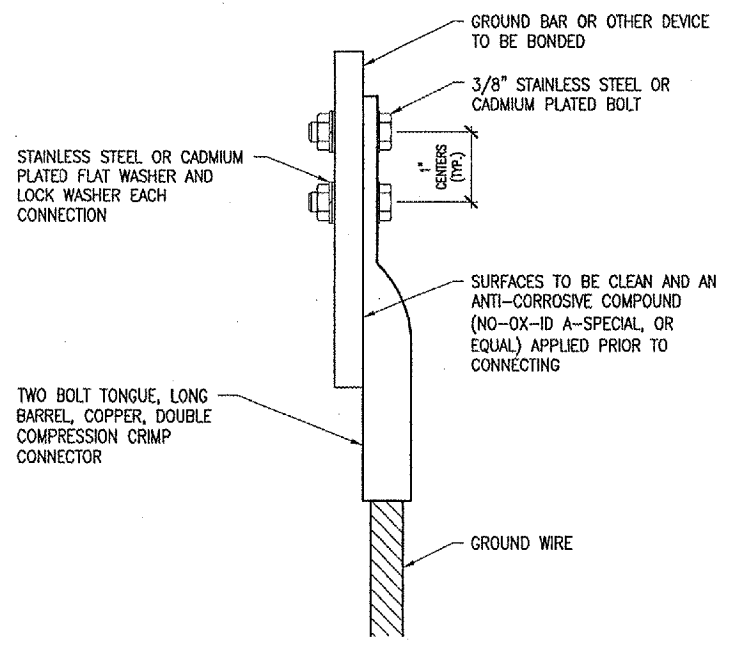


- NOTES**
1. CONNECTIONS TO GROUND BUS BAR SHALL BE WITH 2-HOLE TONGUE LONG BARREL COMPRESSION LUGS BOLTED TO THE BUS BAR.
  2. ALL INSULATED GROUND WIRES SHALL HAVE GREEN COLORED INSULATION FOR ALL CONDUCTOR AWG AND KCMIL.
  3. CONSTANT CURRENT REGULATORS SHALL BE SHUT OFF PRIOR TO DISCONNECTING EXISTING FRAME GROUNDS AND SHALL REMAIN OFF UNTIL GROUNDING UPGRADES AND NEW GROUND CONNECTIONS ARE COMPLETED.
  4. ALL WORK SHOWN ON THIS SHEET SHALL BE PAID FOR UNDER ITEM AR109200 "INSTALL ELECTRICAL EQUIPMENT" PER LUMP SUM.
  5. CONTRACTOR SHALL FIELD VERIFY EXISTING CONDITIONS. REPORT ANY VARIATIONS TO THE RESIDENT ENGINEER. EXISTING EQUIPMENT CONNECTED TO THE EXISTING GROUND SYSTEM SHALL BE RECONNECTED TO THE NEW GROUND BAR.

**CCR GROUND BUS RISER**



**GROUNDING LUG CONNECTION DETAIL**

2 HOLE LONG BARREL COMPRESSION LUG TABLE		
WIRE SIZE	BURNDY CAT. NO.	THOMAS & BETTS CAT. NO.
#8 AWG STRANDED	YA8C-2TC38	256-30695-1157
#6 AWG SOLID	YA8C-2TC38	---
#6 AWG STRANDED	YA6C-2TC38	256-30695-1158
#2 AWG STRANDED	YA2C-2TC38	256-30695-1160
#2 AWG SOLID	YA3C-2TC38	256-30695-1160
#1/0 AWG STRANDED	YA25-2TC38	256-30695-1162
#2/0 AWG STRANDED	YA26-2TC38	256-30695-1116
#3/0 AWG STRANDED	YA27-2TC38	54818BE
#4/0 AWG STRANDED	YA28-2TC38	256-30695-1117

- NOTES**
1. ALL CONNECTIONS TO GROUND BUS BAR SHALL BE WITH 2 HOLE TONGUE LONG BARREL COMPRESSION LUGS BOLTED TO THE BUS BAR.
  2. GROUND WIRE CONNECTIONS TO EQUIPMENT SHALL BE WITH 2 HOLE TONGUE LONG BARREL COMPRESSION LUGS BOLTED TO THE DEVICE OR WITH THE RESPECTIVE EQUIP MANUFACTURER'S LUG OR TERMINAL WHERE APPLICABLE.
  3. GROUNDING ELECTRODE CONDUCTORS, BONDING JUMPERS, & INDIVIDUAL GROUND WIRES SHALL NOT BE INSTALLED IN METAL CONDUIT. WHERE PLASTIC CONDUIT IS USED FOR INDIVIDUAL GROUND WIRES, DO NOT COMPLETELY RENCIRCLE THE CONDUIT WITH FERROUS AND/OR MAGNETIC MATERIALS. WHERE METAL CLAMPS ARE INSTALLED USE NYLON BOLTS, NUTS, WASHERS, & SPACERS TO INTERRUPT A COMPLETE METALLIC PATH FROM ENCIRCLING THE CONDUIT.
  4. ALL CONNECTIONS SHALL BE COATED WITH A CORROSION PREVENTATIVE COMPOUND (SANCHEM INC. NO-OX-ID A-SPECIAL, OR BURNDY PENETROX E, OR APPROVED EQUAL) BEFORE JOINING. ALL COPPER BUS BARS SHALL BE CLEANED PRIOR TO MAKING CONNECTIONS TO REMOVE SURFACE OXIDATION. CLEAN SURFACES, OF RESPECTIVE DEVICES TO BE BONDED, TO BARE METAL, PER NEC 250-12.

BY	REVISION	DATE

CARMi MUNICIPAL AIRPORT  
CARMi, ILLINOIS

IL PROJ.: CUL-3683 A.I.P. PROJ.: 3-17-0109-87

HEI Project No. 801-077XVD-0800	Scale NONE	Date 02/13/07
Drawn KNL	Checked NY	Reviewed CAH



EXTEND PARTIAL  
PARALLEL TAXIWAY  
CCR GROUND BUS RISER  
AND GROUNDING DETAILS

APR 27, 2007 7:54 AM BAK  
I:\AIRPORTS\CARM\801-077XV\AIRPORT\SHEET\E-605.DWG - Work