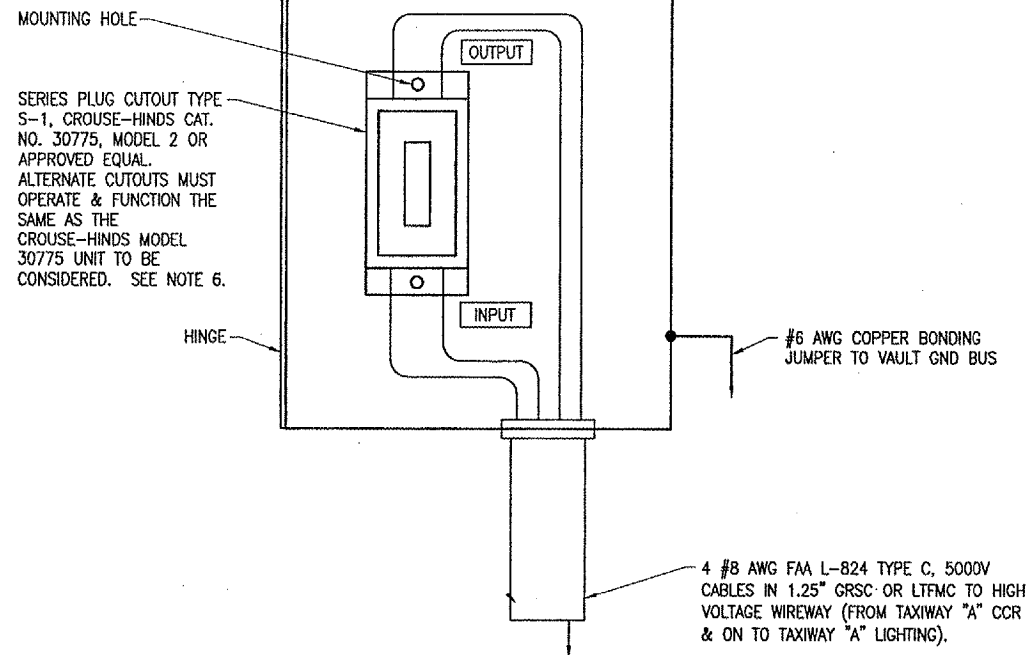
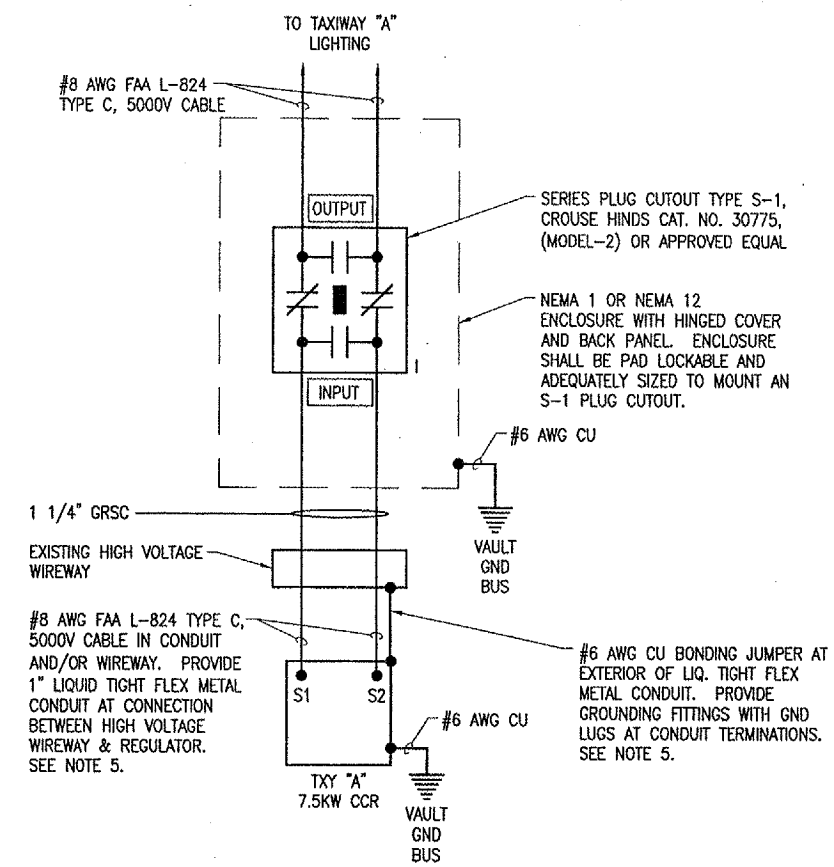


14"H x 12"W x 8"D (APPROXIMATE DIMENSIONS)
NEMA 1 OR NEMA 12 ENCLOSURE WITH HINGED
COVER & BACK PANEL. NOTE FRONT DOOR OF
ENCLOSURE NOT SHOWN FOR CLARITY. ADJUST
ENCLOSURE DIMENSIONS AS NECESSARY TO
ACCOMMODATE THE RESPECTIVE CUTOUT.



SERIES PLUG CUTOUT MOUNTING DETAIL
NOT TO SCALE



HIGH VOLTAGE WIRING SCHEMATIC

| LEGEND PLATE SCHEDULE | |
|------------------------------------|--------------------------------|
| DEVICE | LEGEND PLATE LABEL |
| RUNWAY 18/36 CCR | RUNWAY 18/36 |
| TAXIWAY A CCR | TAXIWAY A |
| CUTOUT ENCLOSURE FOR TAXIWAY A CCR | TAXIWAY A |
| CUTOUT LINE SIDE CONNECTION | INPUT |
| CUTOUT LOAD SIDE CONNECTION | OUTPUT |
| HIGH VOLTAGE WIREWAY | HIGH VOLTAGE |
| LOW VOLTAGE WIREWAY | LOW VOLTAGE |
| SAFETY SWITCH FOR RWY 36 REILS | REIL DISCONNECT FED FROM VAULT |

NOTES
ALL LEGEND PLATES SHALL BE ENGRAVED PHENOLIC OR PLASTIC MATERIAL, BLACK LETTERS ON A WHITE BACKGROUND.

NOTES

1. PROVIDE PHENOLIC ENGRAVED LEGEND PLATES FOR EACH CONSTANT CURRENT REGULATOR (EXISTING & NEW) NOTING THE RUNWAY AND/OR TAXIWAY SERVED.
2. PLUG CUTOUT CABINET SHALL BE FURNISHED WITH A PHENOLIC ENGRAVED LEGEND PLATE THAT IDENTIFIES THE RESPECTIVE RUNWAY/TAXIWAY CIRCUIT OR REGULATOR.
3. PROVIDE PHENOLIC ENGRAVED LEGEND PLATES FOR CUTOUT TO IDENTIFY THE RESPECTIVE REGULATOR OUTPUT CONNECTION AND THE RESPECTIVE CIRCUIT LOAD CONNECTION.
4. BOND PLUG CUTOUT CABINET TO THE VAULT GROUND BUS WITH A #6 AWG COPPER BONDING JUMPER.
5. LIQUID TIGHT FLEXIBLE METAL CONDUIT AND ASSOCIATED FITTINGS SHALL BE U.L. LISTED TO MEET THE REQUIREMENTS OF NEC 350.6, SUITABLE FOR GROUNDING AND SUNLIGHT RESISTANT. LIQUID TIGHT FLEXIBLE METAL CONDUIT THAT IS USED FOR FLEXIBILITY (INCLUDING CONNECTIONS TO CCR'S & TRANSFORMERS) SHALL REQUIRE AN EXTERNAL BONDING JUMPER OR INTERNAL EQUIPMENT GROUNDING CONDUCTOR PER NEC 350.60. EXTERNAL BONDING JUMPERS USED WITH CCR INSTALLATIONS SHALL BE #6 AWG COPPER (MINIMUM). INTERNAL EQUIPMENT GROUNDING CONDUCTORS USED WITH CCR OUTPUT SERIES CIRCUIT WIRING SHALL BE #8 AWG COPPER (MINIMUM). DO NOT INSTALL LIQUID TIGHT FLEXIBLE METAL CONDUIT THAT IS NOT U.L. LISTED.
6. CROUSE-HINDS CAT. NO. 30771, (MODEL-3) SERIES PLUG CUTOUTS ARE NOT ACCEPTABLE, BECAUSE THE HANDLE IS NOT REMOVABLE. OTHER CUTOUTS THAT DO NOT FUNCTION THE SAME AS THE CROUSE-HINDS CAT. NO. 30775 (MODEL-2) ARE NOT ACCEPTABLE.
7. MAINTAIN SEPARATION OF HIGH VOLTAGE AND LOW VOLTAGE CIRCUITS. HIGH VOLTAGE AND LOW VOLTAGE CIRCUITS SHALL NOT BE INSTALLED IN THE SAME WIREWAY, CONDUIT, OR RACEWAY. COORDINATE HIGH VOLTAGE WIRING ENTRIES INTO THE CCR HIGH VOLTAGE SECTION. COORDINATE LOW VOLTAGE WIRING ENTRIES INTO THE LOW VOLTAGE SECTION.

LEGEND

- "I" DENOTES PLUG CUTOUT WITH PLUG INSERTED
- "P" DENOTES PLUG CUTOUT WITH PLUG PULLED
- "CCR" DENOTES CONSTANT CURRENT REGULATOR

| BY | REVISION | DATE |
|----|----------|------|
| | | |
| | | |

CARMi MUNICIPAL AIRPORT
CARMi, ILLINOIS

IL PROJ.: CUL-3683 A.I.P. PROJ.: 3-17-0109-B7

| | | | |
|--------------------------------|-----|----------|--|
| IEL Project No. 801-07XXD.0800 | | | |
| Filename E-604.DWG | | | |
| Scale NONE | | | |
| Date 02/05/07 | | | |
| LAYOUT | KNL | 02/05/07 | |
| DRAWN | MV | 02/05/07 | |
| REVIEWED | CAH | 03/27/07 | |



Hanson Professional Services Inc.
1625 South Sixth Street
Springfield, Illinois 62703-2886
Offices Nationwide

EXTEND PARTIAL
PARALLEL TAXIWAY

HIGH VOLTAGE
WIRING SCHEMATIC