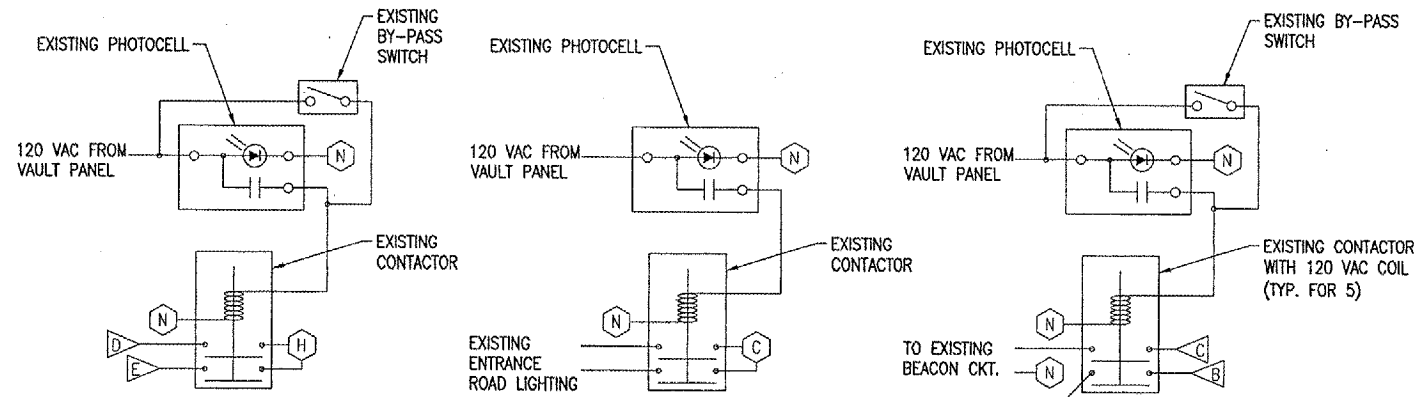
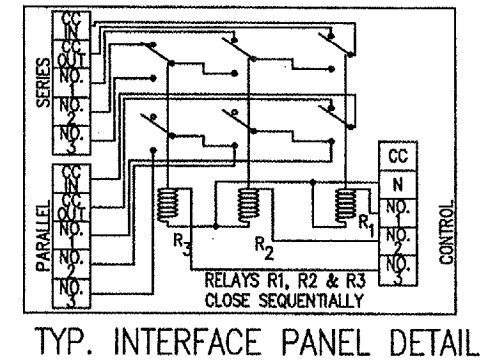
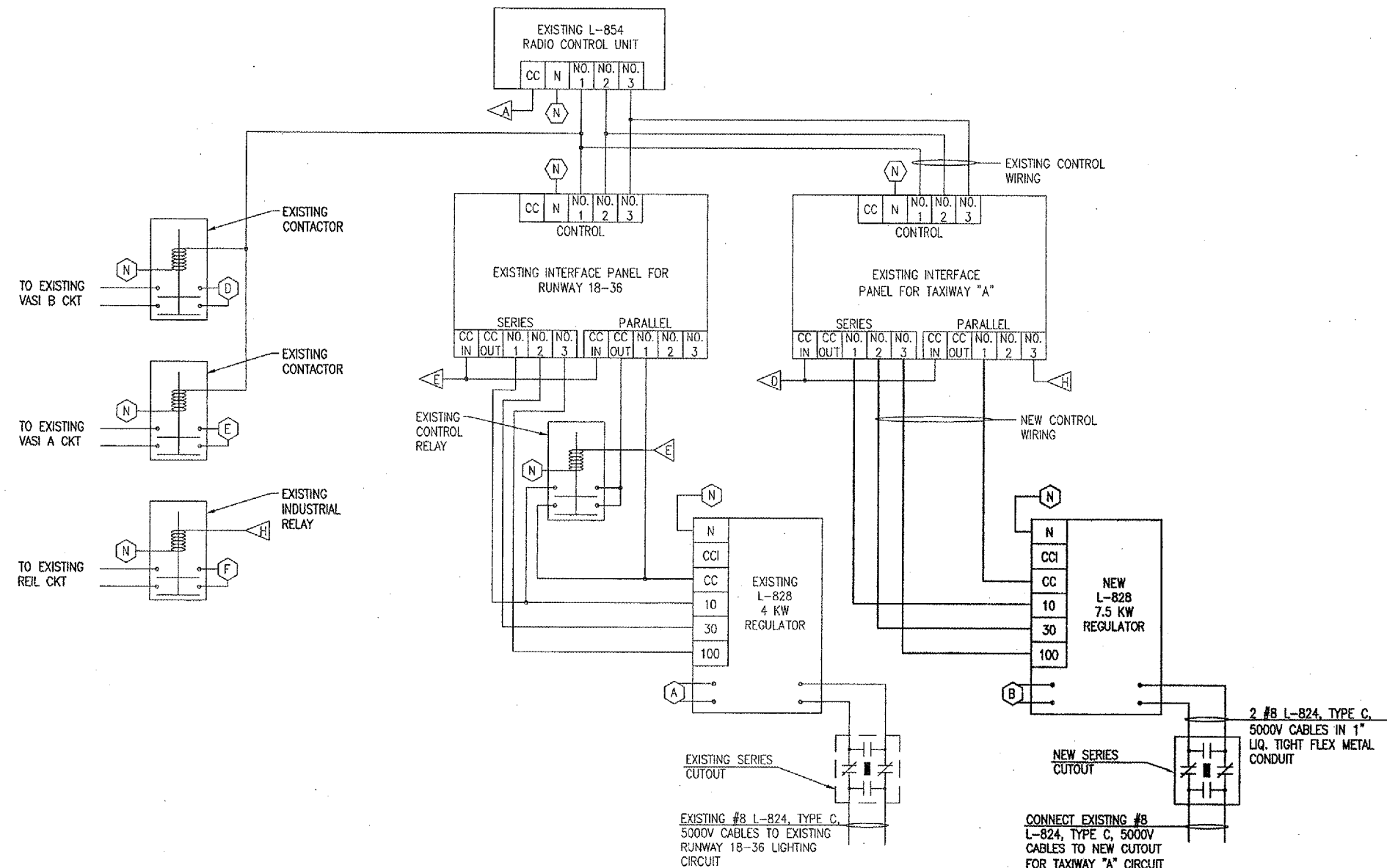


NOTES

- ALL ELECTRICAL EQUIPMENT WILL BE WIRED IN ACCORDANCE WITH THE SCHEMATIC WIRING DIAGRAM AND ALL APPLICABLE CODES.
- ALL CONTROL CABLE WILL BE NO. 12 AWG COPPER, 600 VOLT CABLE.
- ALL ELECTRICAL EQUIPMENT WILL BE PROPERLY LABELED AND ALL ELECTRICAL CABLES WILL BE TAGGED.
- ALL ELECTRICAL CABLES INSIDE THE VAULT WILL BE IN CONDUIT OR DUCT.
- THE RUNWAY/TAXIWAY CIRCUITS WILL BE CONTROLLED BY THE L-854 RADIO CONTROL UNIT IN THE FOLLOWING MANNER:
 3 CLICKS - 10% BRIGHTNESS
 5 CLICKS - 30% BRIGHTNESS
 7 CLICKS - 100% BRIGHTNESS
- RADIO CONTROL UNIT, PHOTOCELL, CONTROL RELAYS, CONTACTORS, CCR FOR RWY 18-36 AND THE RESPECTIVE INTERFACE PANEL, & CUTOUT ARE EXISTING. INTERFACE PANEL FOR TAXIWAY CCR IS EXISTING.
- 7.5 KW CONSTANT CURRENT REGULATOR FOR TAXIWAY AND ASSOCIATED CUTOUT, 240 VAC POWER WIRING, CONTROL WIRING, & 5000V L-824 CABLES ARE NEW AND SHALL BE FURNISHED & INSTALLED UNDER ITEM AR109200.
- EQUIPMENT GROUND WIRES SHALL BE INCLUDED WITH EACH NEW BRANCH/FEEDER CIRCUIT & THE NEW CONTROL CIRCUIT, TO THE CONSTANT CURRENT REGULATOR.



- SHEET LEGEND**
- (A) FEED FROM 30A, 2P FUSIBLE SAFETY SWITCH (RWY 18-36 CCR)
 - (B) VAULT PANEL 240 VAC CKT (TAXIWAY "A" CCR)
 - (C) VAULT PANEL 240 VAC CKT (ENTRANCE ROAD LIGHTS)
 - (D) VAULT PANEL 240 VAC CKT (VASI B)
 - (E) VAULT PANEL 240 VAC CKT (VASI A)
 - (F) VAULT PANEL 240 VAC CKT (REILS)
 - (G) RESERVED
 - (H) VAULT PANEL 120/240 VAC CKT (CONTROL FOR CCR'S)
 - (N) N DESIGNATES NEUTRAL FROM THE RESPECTIVE PANEL THAT POWERS THE DEVICE. FOR CONTROL CIRCUIT INPUTS TO CCR'S N SHALL BE FROM THE RESPECTIVE INTERFACE PANEL CIRCUIT NEUTRAL CONNECTION.
 - (A) VAULT PANEL 120 VAC CKT (L-854 RADIO)
 - (B) VAULT PANEL 120 VAC CKT (WIND-TEE)
 - (C) VAULT PANEL 120 VAC CKT (BEACON)
 - (D) 120 VAC POWER FOR TAXIWAY INTERFACE PANEL
 - (E) 120 VAC POWER FOR RUNWAY INTERFACE PANEL
 - (A) PARALLEL NO. 3 OUTPUT FROM INTERFACE PANEL FOR TAXIWAY CCR



AIRFIELD LIGHTING SCHEMATIC WIRING DIAGRAM

BY	
REVISION	
DATE	

CARMI MUNICIPAL AIRPORT
CARMI, ILLINOIS

A.I.P. PROJ.: 3-17-0109-87

ILL. PROJ.: CUL-3683

HEL Project No.	801-077XXD_0800
Drawn	E-803.DWG
Scale	NONE
Date	02/05/07
LAYOUT	KNL 02/05/07
DRAWN	MV 02/05/07
REVIEWED	CAH 03/21/07

HANSON

Hanson Professional Services Inc.
1525 South Sixth Street
Springfield, Illinois 62703-2886
Offices Nationwide

EXTEND PARTIAL
PARALLEL TAXIWAY
AIRFIELD LIGHTING
WIRING SCHEMATIC

APR 27, 2007 7:52 AM BAK I:\AIRPORTS\CARMI\801-077XXD\AIRPORT_SHEETS\E-803.DWG - Work