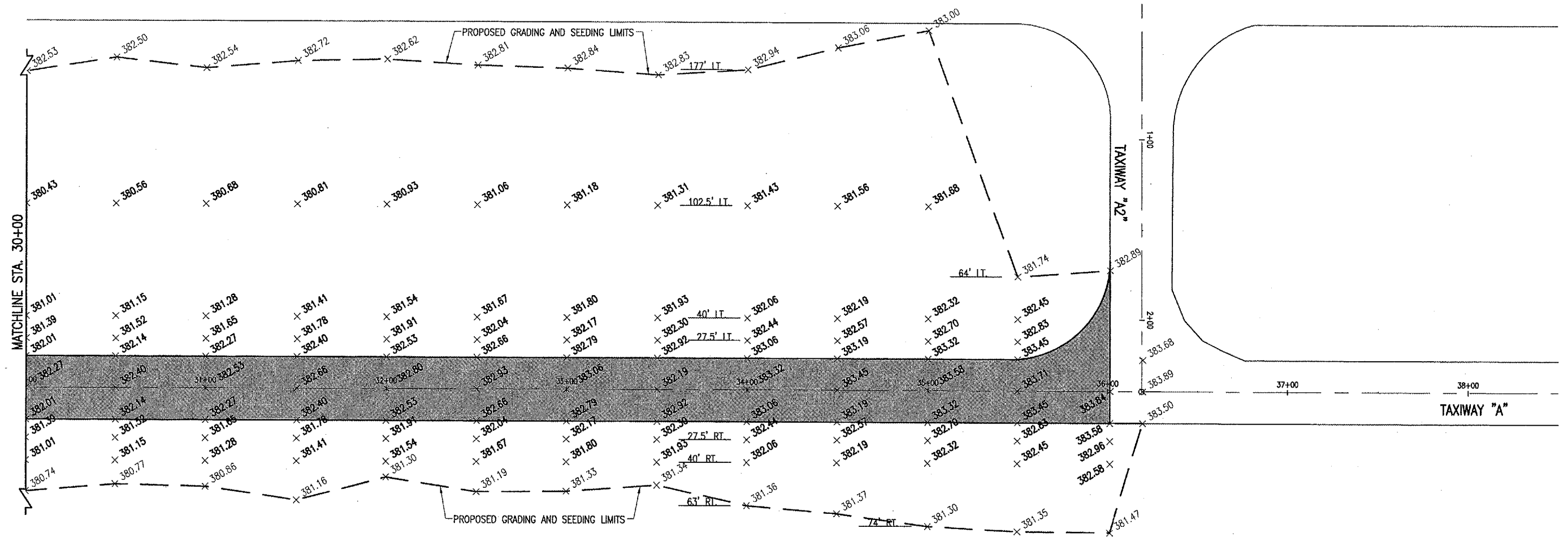
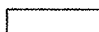


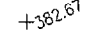
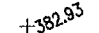
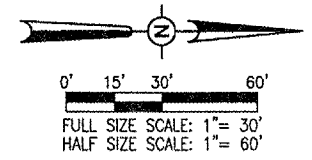


APR 27, 2007 7:40 AM BAK
 F:\AIRPORTS\CARMI\801-071XX\AIRPORT\SHEETS\R-191STK.DWG - STA. 30+00 TO STA. 38+50



LEGEND

-  EXISTING PAVEMENT
-  PROPOSED PAVEMENT
-  PROPOSED GRADING AND SEEDING LIMITS
-  EXISTING GRADE
-  PROPOSED GRADE



FULL SIZE SCALE: 1" = 30'
 HALF SIZE SCALE: 1" = 60'

DATE	REVISION	BY

CARMI MUNICIPAL AIRPORT
CARMI, ILLINOIS

A.I.P. PROJ.: 3-17-0109-67
 I.L. PROJ.: CUL-3683

I.E.I. Project No. 801-071XX-0800 Filename: R-191STK.DWG Scale: 1" = 30' Date: 11/15/06	
LAYOUT	SEP 11/15/06
DRAWN	BAK 11/15/06
REVIEWED	CAH 03/27/07



Hanson Professional Services Inc.
 1525 South Sixth Street
 Springfield, Illinois 62703-2886
 Offices Nationwide

EXTEND PARTIAL PARALLEL TAXIWAY

PROPOSED STAKING PLAN
 STA. 30+00 TO STA. 38+50