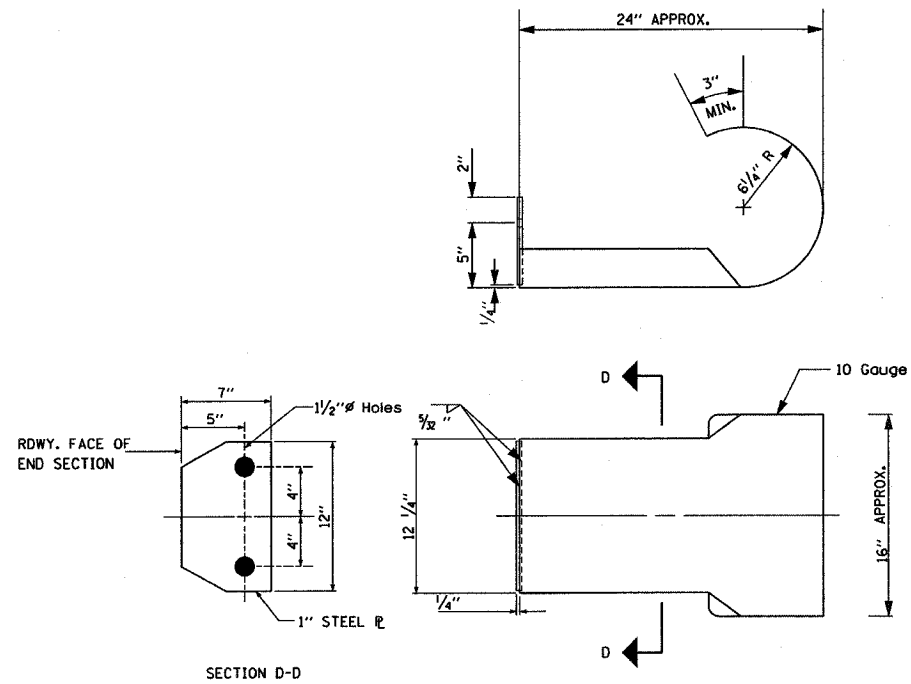


CURLED END SECTION DETAIL



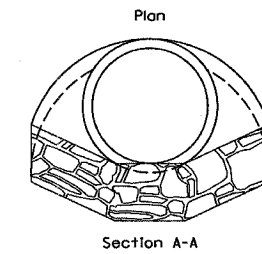
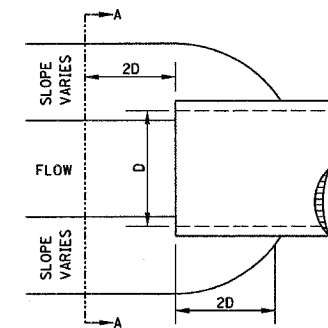
ALL OTHER STEEL SHAPES AND PLATES SHALL CONFORM TO THE REQUIREMENTS OF A.A.S.H.T.O. DESIGNATION M-183 EXCEPT POSTS AND ANGLES SHALL CONFORM TO A.A.S.H.T.O. M-223, GRADE 50.

BOLTS, CAP SCREWS, AND NUTS SHALL CONFORM TO THE REQUIREMENT OF A.S.T.M. DESIGNATION A-307 EXCEPT FOR HIGH STRENGTH BOLTS, NUTS, AND WASHERS NOTED WHICH SHALL CONFORM TO A.A.S.H.T.O. DESIGNATION M-164.

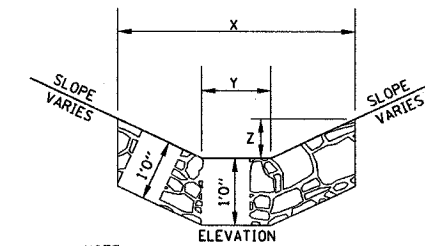
ALL BOLTS, NUTS, CAP SCREWS, WASHERS, AND LOCK WASHERS SHALL BE GALVINIZED IN ACCORDANCE WITH A.A.S.H.T.O. DESIGNATION M-232.

ALL FIELD DRILLED HOLES SHALL BE COATED WITH AN APPROVED ZINC RICH PAINT BEFORE ERRECTION.

STONE RIPRAP DITCH DESIGN



NOTE: FOR PLACEMENT, QUALITY GRADATION AND OTHER MISCELLANEOUS REQUIREMENTS FOR STONE RIPRAP DITCH-SEE SPECIAL PROVISIONS.



NOTE:

| BOTTOM OF DITCH | SLOPE | | | |
|-----------------|---------|------|------|-------------|
| | 1 1/2:1 | 2:1 | 3:1 | |
| 2 FT | X= 5 FT | 6 FT | 8 FT | |
| | Y= 2 FT | 2 FT | 2 FT | |
| | Z= 1 FT | 1 FT | 1 FT | |
| | 0.40 | 0.48 | 0.62 | TON/LIN. FT |

| BOTTOM OF DITCH | SLOPE | | | |
|-----------------|---------|------|------|-------------|
| | 1 1/2:1 | 2:1 | 3:1 | |
| 3 FT | X= 6 FT | 7 FT | 9 FT | |
| | Y= 3 FT | 3 FT | 3 FT | |
| | Z= 1 FT | 1 FT | 1 FT | |
| | 0.48 | 0.56 | 0.70 | TON/LIN. FT |

| BOTTOM OF DITCH | SLOPE | | | |
|-----------------|---------|------|-------|-------------|
| | 1 1/2:1 | 2:1 | 3:1 | |
| 4 FT | X= 7 FT | 8 FT | 10 FT | |
| | Y= 4 FT | 4 FT | 4 FT | |
| | Z= 1 FT | 1 FT | 1 FT | |
| | 0.56 | 0.64 | 0.78 | TON/LIN. FT |