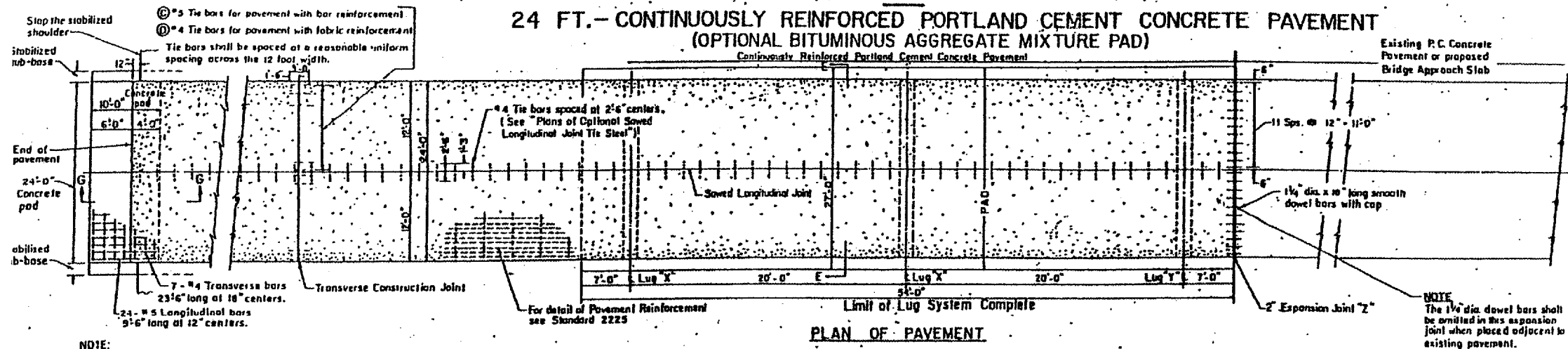


STANDARD DESIGN

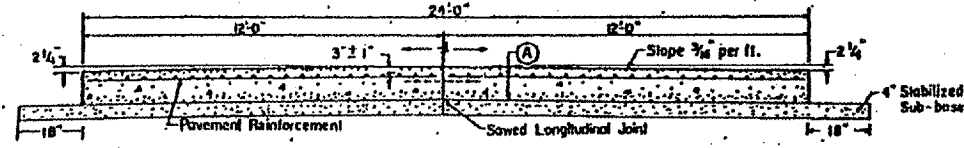
24 FT.-CONTINUOUSLY REINFORCED PORTLAND CEMENT CONCRETE PAVEMENT  
(OPTIONAL BITUMINOUS AGGREGATE MIXTURE PAD)



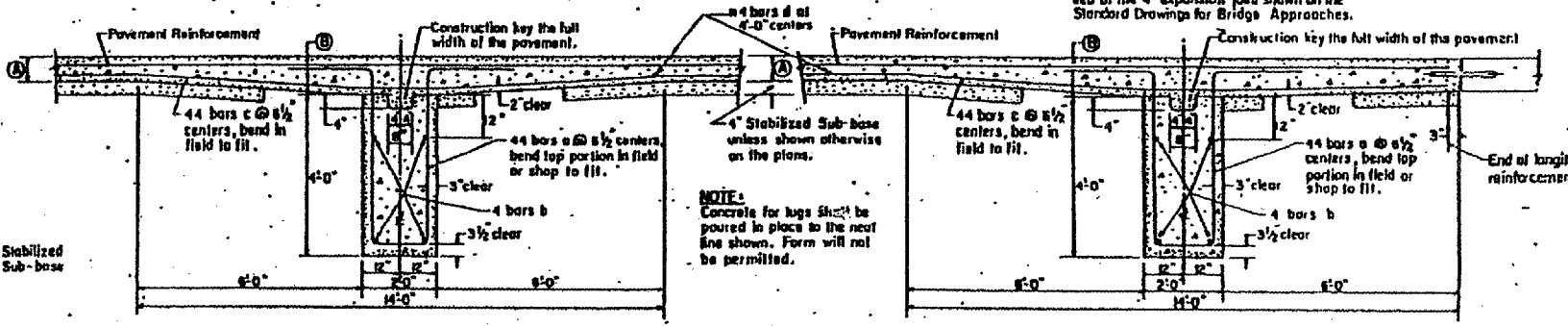
**NOTE:**  
When a slip form paver not equipped with approved automatic grade controls is to be used, it shall operate on the BAM pad which shall be extended so that the overall width is 6 inches greater than the width from outside to outside of the slip form paver's tracks. Such extended width will not be measured for payment but shall be considered incidental to the contract.  
If the slip form paver is equipped with approved automatic grade controls that control the four corner supports of the paver and the Contractor elects to use these controls, the BAM pad shall be 12 inches wider than the design pavement width.

**NOTE:**  
The 1 1/2 dia. dowel bars shall be omitted in this expansion joint when placed adjacent to existing pavement.

When pavement is adjacent to bridge approach slab, this expansion joint shall be provided in lieu of the 4" expansion joint shown on the Standard Drawings for Bridge Approaches.

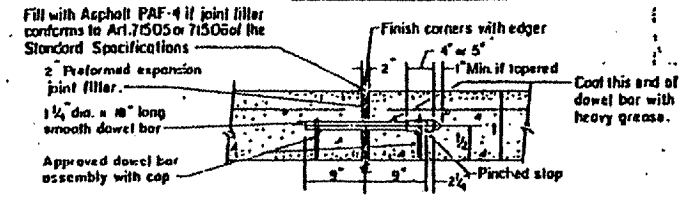


CROSS SECTION E-E

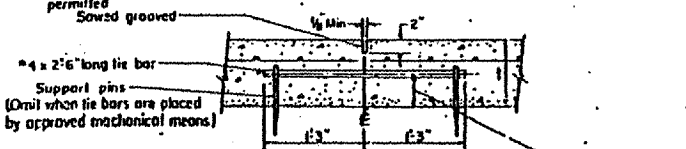


SECTION AT LUG "X"

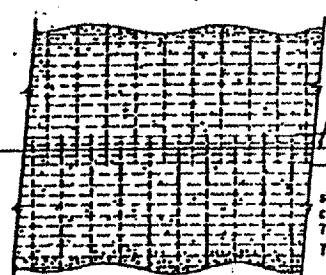
SECTION AT LUG "Y"



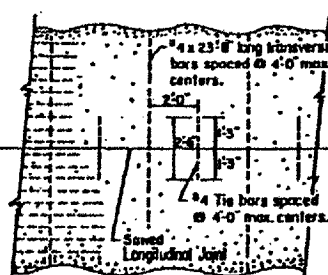
DETAIL OF EXPANSION JOINT



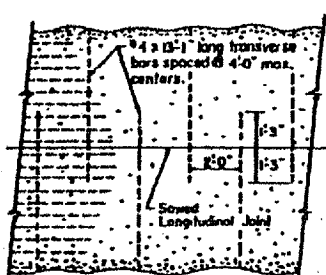
DETAIL OF SAWED LONGITUDINAL JOINT



ASSEMBLY I FABRIC REINFORCEMENT



ASSEMBLY II BAR REINFORCEMENT



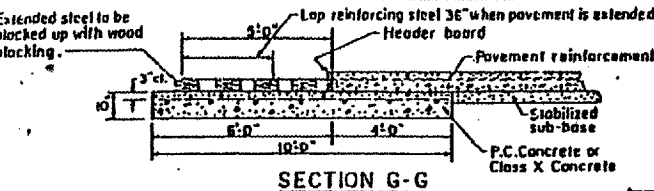
ASSEMBLY III BAR REINFORCEMENT

PLANS OF OPTIONAL SAWED LONGITUDINAL JOINT TIE STEEL

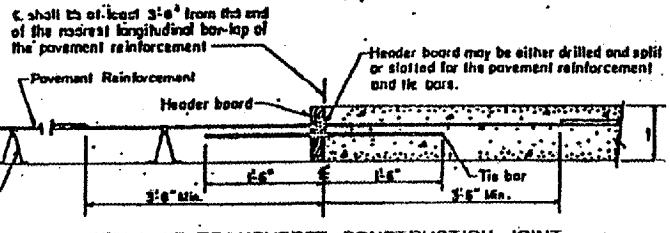
Bar No.	Size	Length	Shape
a	132 #7	14'-0"	U
b	12 #5	24'-9"	U
c	132 #5	20'-0"	U
d	28 #4	11'-5"	U

Class X Concrete, Cu.Yds. 2085  
Reinforcing Bars, Lbs. 7062  
BAM Pad, Sq.Yds. 146

Part	(A)	(B)	(C)	(D)
Bar a	8"	12"	8"	12"
Bar b	9"	14"	9"	14"



SECTION G-G



DETAIL OF TRANSVERSE CONSTRUCTION JOINT

Sawed joints shall be sealed with hot poured material meeting the requirements of the Tentative Specifications for Concrete Joint Sealer, Hot-Poured Elastic Type, ASTM Designation: D190-52 T, or sealed with a cold applied, ready-mixed concrete joint sealing compound meeting the requirements of Article 716.03

The 54 tests shown above of Bituminous Aggregate Mixture Pad, between and adjacent to the lugs will be considered incidental to the Lug System.

Expansion joint shall be considered incidental to the cost of Continuously Reinforced Concrete Pavement.

Details shown in Section G-G shall apply only at the end of the construction section; the 10" reinforced concrete pad, header board, wood blocking, and the 5 ft. of extended pavement reinforcement will be considered incidental to the cost of the C.R.C. Pavement.

Lug and anchorages shall be constructed at the locations shown except that when the distance between two expansion joints marked "Z" is less than 1500 ft., the anchorage shall be as shown on the detailed construction plans.

ISSUED	1-4-63	W.F.	3-10-69
REVISED	J.K.P.	10-15-69	
W.F.	4-1-63	W.F.	3-18-70
W.F.	6-25-65		
W.F.	4-20-66		
	8-11-62		
	1-15-69		

STATE OF ILLINOIS  
DEPARTMENT OF PUBLIC WORKS & BUILDINGS  
DIVISION OF HIGHWAYS  
PASSED: M.P. 1B 1970  
APPROVED: M.P. 1B 1970

STANDARD 2224-8  
(Full Size)

FOR INFORMATION ONLY  
FULL SIZE PLANS SHEETS ARE AVAILABLE AT THE DISTRICT 9 OFFICE  
FOR REVIEW.

FAI 57 (I-57)  
SECTION 02-(1, 1-1, 1-2, 1-3)RS-1  
ALEXANDER  
SHEET 21 OF 22 C.N.98905