

STATE OF ILLINOIS
DEPARTMENT OF TRANSPORTATION
DIVISION OF HIGHWAYS

FAU ROUTE NO.	SECTION	COUNTY	TOTAL SHEETS	SHEET NO.
9247	05-00016-00-PV	ST. CLAIR	6	1
STA. 101+58		TO STA. 111+65		
FEDERAL AID PROJECT		CONTRACT 97310		

PLANS FOR PROPOSED
FEDERAL AID PROJECT
FAU 9247 (ST. LOUIS STREET IMPROVEMENTS)
SECTION 05-00016-00-PV
PROJECT NO. M-5011(227)
CITY OF LEBANON, ILLINOIS
ST. CLAIR COUNTY
JOB NO. C-98-309-07

APPLICABLE IDOT HIGHWAY STANDARDS

424001-04	701501-03
604066-01	701801-03
606001-03	702001-06
	BLR 21-6

INDEX OF SHEETS

- COVER SHEET/SUMMARY OF QUANTITIES
- TYPICAL SECTIONS/
GENERAL NOTES/SCHEDULE OF QUANTITIES
- PLAN AND PROFILE
- PLAN AND PROFILE
- CROSS SECTIONS
- MISCELLANEOUS DETAILS

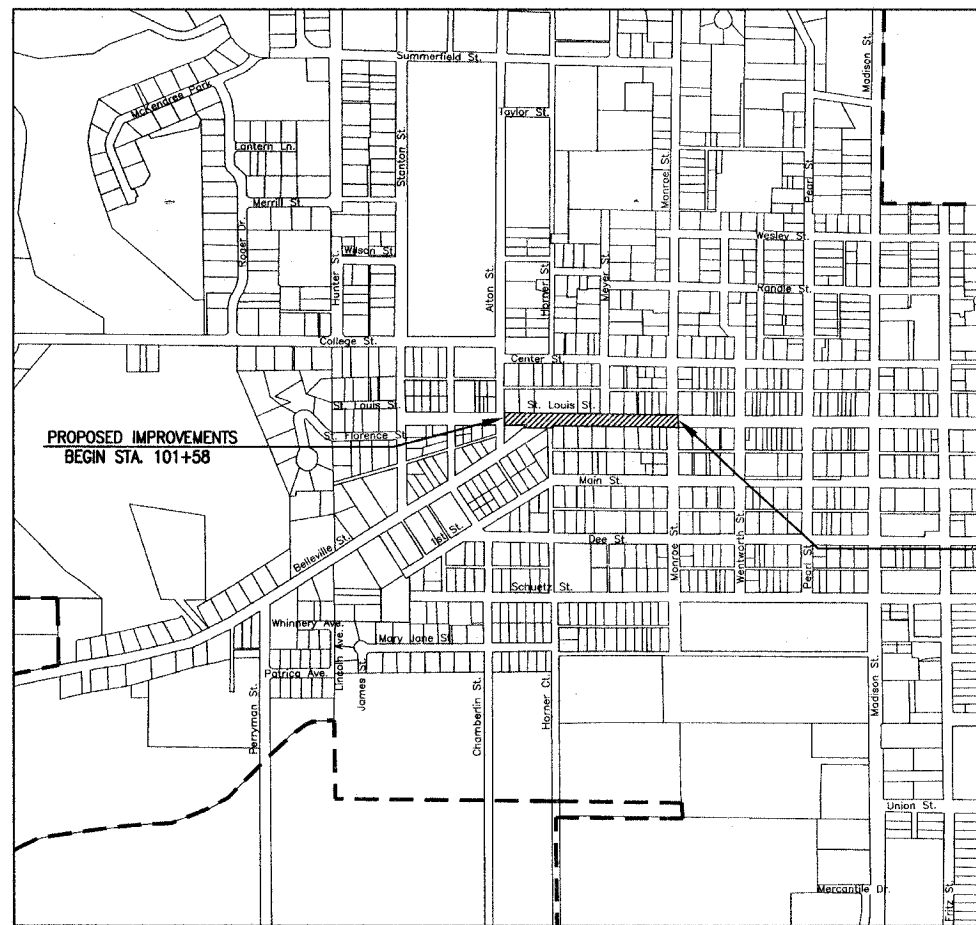
SUMMARY OF QUANTITIES

CODE NO.	ITEM	UNIT	TOTAL QUANTITY	ST. LOUIS STREET STA. 103+50 TO STA. 111+65 75% FEDERAL/ 25% LOCAL FUNDING	ST. LOUIS STREET STA. 101+58 TO STA. 103+50 100% LOCAL FUNDING
20200100	EARTH EXCAVATION	CU. YD.	563	270	293
35100700	AGGREGATE BASE COURSE, TYPE A 8"	SQ. YD.	1569	638	931
40600100	BITUMINOUS MATERIALS (PRIME COAT)	GALLON	471	191	280
40600635	LEVEL BINDER (MACHINE METHOD) N70	TON	132	53	79
40603340	HOT-MIX ASPHALT SURFACE COURSE, MIX "D", N70	TON	132	53	79
40800050	INCIDENTAL HOT-MIX ASPHALT SURFACING	TON	2	2	
42400100	PORTLAND CEMENT CONCRETE SIDEWALK 4 INCH	SQ. FT.	6654	6546	108
42400800	DETECTABLE WARNINGS	SQ. FT.	136	128	8
44000100	PAVEMENT REMOVAL	SQ. YD.	93	93	
44000300	CURB REMOVAL	FOOT	80	80	
44000500	COMBINATION CURB AND GUTTER REMOVAL	FOOT	123	64	59
44000600	SIDEWALK REMOVAL	SQ. FT.	6846	6738	108
60262700	INLETS TO BE RECONSTRUCTED	EACH	1	1	
60264100	INLETS TO BE RECONSTRUCTED WITH NEW TYPE 15 FRAME & LID	EACH	1		1
60600605	CONCRETE CURB TYPE B	FOOT	94	94	
60604400	COMBINATION CONCRETE CURB AND GUTTER TYPE B-6.18	FOOT	117	58	59
70101700	TRAFFIC CONTROL AND PROTECTION	L SUM	1	0.81	0.19
72000100	SIGN PANEL - TYPE 1	SQ. FT.	1.5	1.5	
72900100	METAL POST - TYPE A	FOOT	11	11	
* 78001130	PAINT PAVEMENT MARKING - LINE 6"	FOOT	210	210	
* 78001180	PAINT PAVEMENT MARKING - LINE 24"	FOOT	30	30	
XX002873	BRICK SIDEWALK REMOVAL	SQ. FT.	1203	1203	
LR430040	PAVING SIDEWALK	SQ. YD.	127	127	
67100100	MOBILIZATION	L SUM	1	1	

VICINITY MAP



LOCATION MAP



LOCATION MAP

1" = 500 FT.

NET LENGTH OF IMPROVEMENT
1007 FEET = 0.1907 MILES
2007 ADT=5628

▨ AREAS TO BE IMPROVED

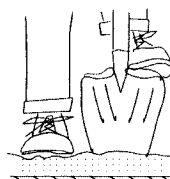
PROPOSED IMPROVEMENTS * SPECIALTY ITEMS
END STA. 111+65

APPROVED: *Scott A. Hauer* 4/30/07
DATE
CITY OF LEBANON, MAYOR

PASSED: *[Signature]* 5/3/07
DATE
DISTRICT 8 ENGINEER OF LOCAL ROADS & STREETS

RELEASED FOR BID
BASED ON LIMITED REVIEW 5/3/07
DATE
Mary C. Lamie, P.E.
DEPUTY DIRECTOR OF HIGHWAYS
REGION FIVE ENGINEER
STATE OF ILLINOIS
DEPARTMENT OF TRANSPORTATION

HOLD IT! CALL BEFORE YOU DIG!
Phone J.U.L.I.E.



The owner would like to remind you that underground utility facilities can be damaged by shovel blades or other digging equipment. You can prevent damage or possible personal danger by phoning 800/892-0123 at least 48 hours before you dig. That's the toll-free number for "J.U.L.I.E.", which stands for Joint Utilities Location Information for Excavators.

If there are any pipes, cables, lines or mains in the excavation area, utility personnel will be out to mark the facilities so you can work around them.

Toll Free 800/892-0123

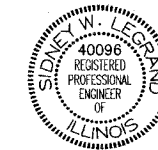


RHUTASEL and ASSOCIATES, INC.

ENGINEERS • SURVEYORS

CORPORATE OFFICE
4 INDUSTRIAL DRIVE
FREEBURG, ILLINOIS 62243
(618) 539-3178

REGIONAL OFFICE
201 SOUTH LOCUST STREET
CENTRALIA, ILLINOIS 62801
(618) 532-1992



Sidney W. Legend
Date of Signing: 4/27/07
Date of License Expiration: 11/30/07

F.A.U. ROUTE NO.	SECTION	COUNTY	TOTAL SHEETS	SHEET NO.
9247	05-00016-00-PV	ST. CLAIR	6	2
STA. 101+58		TO STA. 111+65		
FEDERAL AID PROJECT		CONTRACT 97310		

GENERAL NOTES

EXISTING UTILITIES SHOWN ARE LOCATED FROM SURFACE OBSERVATIONS OR INFORMATION PROVIDED BY THE RESPECTIVE UTILITIES AND MUST BE CONSIDERED APPROXIMATE. THERE MAY BE OTHERS, THE EXACT LOCATION OF WHICH ARE UNKNOWN AND NOT SHOWN. THE CONTRACTOR WILL BE RESPONSIBLE FOR NOTIFYING THE RESPECTIVE UTILITIES BEFORE WORK IS BEGUN. FIELD MARKINGS OF UNDERGROUND UTILITIES MAY BE OBTAINED BY PROVIDING A MINIMUM OF 48 HOURS ADVANCE NOTICE THROUGH THE J.U.L.I.E. SYSTEM BY CALLING 1-800-892-0123 OR BY DIRECT CONTACT WITH NON-MEMBERS OF J.U.L.I.E.

ALL CONSTRUCTION SHALL BE ACCORDING TO ILLINOIS DEPARTMENT OF TRANSPORTATION STANDARD SPECIFICATIONS FOR ROAD AND BRIDGE CONSTRUCTION, JANUARY 1, 2007, AND THE LATEST SUPPLEMENTAL SPECIFICATIONS AND SPECIAL PROVISIONS.

TRAFFIC PROTECTION AND CONTROL, AND PROPER BARRICADES SHALL BE MAINTAINED BY THE CONTRACTOR THROUGHOUT THE DURATION OF CONSTRUCTION.

ALL EARTHWORK REQUIRED FOR CONSTRUCTING AGGREGATE BASE COURSE IS INCLUDED IN THE QUANTITY OF EARTHWORK SHOWN IN THE PLANS AND SHALL BE PAID FOR AT THE CONTRACT UNIT PRICE PER CUBIC YARD OF EARTH EXCAVATION. SUBGRADE SHALL BE COMPACTED TO THE SATISFACTION OF THE ENGINEER BEFORE PAVEMENT CONSTRUCTION.

FACTORS USED FOR QUANTITY CALCULATIONS ARE AS FOLLOWS:
 ALL HOT-MIX ASPHALT — 112 LBS./SQ. YD./INCH
 BITUMINOUS MATERIALS (PRIME COAT) — 0.30 GALLONS/SQ. YD.

ACCESSIBLE RAMPS (TYPE A & TYPE B) MUST BE BUILT ACCORDING TO IDOT STANDARDS. PRECAST CONCRETE TRUNCATED DOME PADS MUST BE MANUFACTURED BY CAST IN TACT OR APPROVED EQUAL.

THE PROPOSED SIDEWALK RAMP NEAR STA. 104+26, LEFT SHALL NOT HAVE DETECTABLE WARNINGS. THE SURFACE SHALL BE CROSS BROOM FINISHED AND CROSS TINED USING A HAND OPERATED COMB. THE METAL COMB SHALL HAVE TINES SPACED AT 3/4" CENTERS AND SHALL BE USED TO CONSTRUCT 1/8" DEEP GROOVES.

ALL RADII CALLED OUT ON THE PLANS ARE TO THE FLOWLINE OF CURB.

ALL AREAS OF SIDEWALK REMOVAL/REPLACEMENT WILL BE MARKED BY THE ENGINEER IN THE FIELD. ALL EARTHWORK ASSOCIATED WITH SIDEWALK REMOVAL SHALL BE INCLUDED IN THE UNIT PRICE OF SIDEWALK REMOVAL.

SEEDING SHALL BE DONE IN ALL AREAS WHERE SOIL HAS BEEN DISTURBED. SEEDING, FERTILIZER AND MULCH SHALL BE INCLUDED IN THE COST OF SIDEWALK CONSTRUCTION.

THE CONTRACTOR SHALL BE RESPONSIBLE FOR ANY DAMAGE OR DESTRUCTION TO PUBLIC ROADWAYS RESULTING FROM ANY CONSTRUCTION RELATED ACTIVITIES.

PAVEMENT DESIGN

STRUCTURAL DESIGN TRAFFIC (S.D.T.)	YEAR	2017	P.V.	7653
			S.U.	5
			M.U.	1
CLASS II ROAD				
MINIMUM SOIL SUPPORT: IBR= 3				
T.F.=0.0187				

PAVEMENT STRUCTURE MATERIALS

SURFACE COURSE: HOT-MIX ASPHALT SURFACE COURSE, MIX "D", N50: a₁=0.4

BASE COURSE: AGGREGATE BASE COURSE TYPE A: a₂=0.13

THE FOLLOWING MIXTURE REQUIREMENTS ARE APPLICABLE FOR THIS PROJECT:

MIXTURE USE(S)	SURFACE COURSE	BINDER COURSE	INCIDENTAL
AC/PG	PG 64-22	PG 64-22	PG 64-22
RAP % (MAX.)	10%	15%	10%
DESIGN AIR VOIDS	4.0% @ Ndes=70	4.0% @ Ndes=70	4.0% @ Ndes=70
MIX COMPOSITION (GRADATION MIX)		IL-9.5	
FRICTION AGG	MIXTURE D	MIXTURE D	MIXTURE D

COMBINATION CONCRETE CURB & GUTTER SCHEDULE

LOCATION	60604400 COMB. CONC. CURB & GUTTER TYPE B-6.18
STA. 101+58 RT. NORTH AROUND RADIUS TO STA. 101+87 RT.	35
STA. 104+44 RT. NORTH AROUND RADIUS TO STA. 104+67 RT.	32
STA. 101+58 LT. SOUTH AROUND RADIUS TO STA. 101+74 LT.	24
STA. 104+22 LT. EAST TO STA. 104+30 LT.	8
STA. 104+49 LT. EAST TO STA. 104+67 LT.	18
TOTAL	117

COMBINATION CONCRETE CURB & GUTTER REMOVAL SCHEDULE

LOCATION	44000500 COMB. CONC. CURB & GUTTER REMOVAL
STA. 101+58 RT. NORTH AROUND RADIUS TO STA. 101+87 RT.	35
STA. 111+16 RT. 33.9 FT. OFFSET NORTH TO 35.1 FT. OFFSET	3
STA. 111+47 RT. NORTH AROUND RADIUS TO STA. 111+48 RT.	7
STA. 101+58 LT. SOUTH AROUND RADIUS TO STA. 101+74 LT.	24
STA. 104+22 LT. EAST TO STA. 104+30 LT.	8
STA. 111+01 LT. NORTH AROUND RADIUS TO STA. 111+18 LT.	23
STA. 111+51 LT. SOUTH AROUND RADIUS TO STA. 111+67 LT.	23
TOTAL	123

CONCRETE CURB SCHEDULE

LOCATION	60600605 CONC. CURB TYPE B
STA. 111+01 RT. SOUTH AROUND RADIUS TO STA. 111+16 RT.	23
STA. 111+47 RT. NORTH AROUND RADIUS TO STA. 111+65 RT.	25
STA. 111+01 LT. NORTH AROUND RADIUS TO STA. 111+18 LT.	23
STA. 111+51 LT. SOUTH AROUND RADIUS TO STA. 111+65 LT.	23
TOTAL	94

CONCRETE CURB REMOVAL SCHEDULE

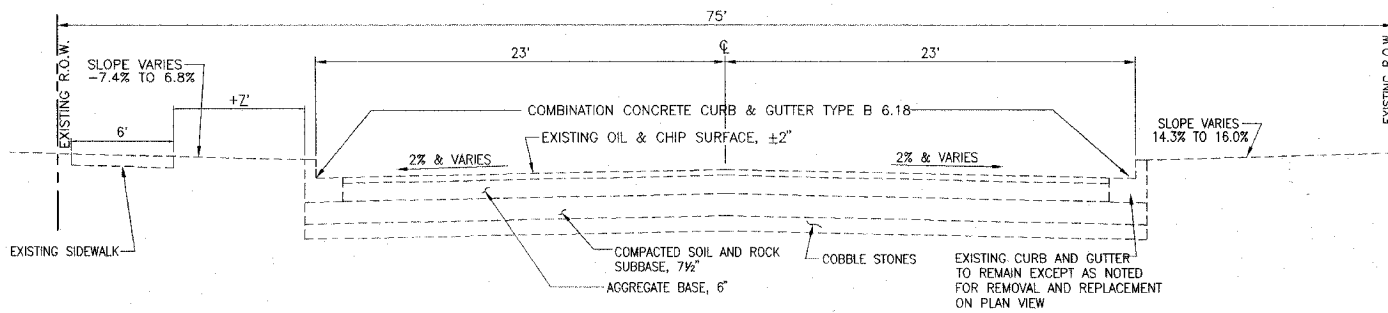
LOCATION	44000300 CURB REMOVAL
STA. 104+46 RT. EAST TO STA. 104+67 RT.	21
STA. 111+01 RT. SOUTH AROUND RADIUS TO STA. 111+16 RT.	23
STA. 111+49 RT. NORTH AROUND RADIUS TO STA. 111+65 RT.	18
STA. 104+54 LT. EAST TO STA. 104+67 LT.	18
TOTAL	80

ELECTRIC & GAS
 AMEREN IP
 1050 WEST BOULEVARD
 P.O. BOX 428
 BELLEVILLE, ILLINOIS 62221
 (618) 236-6271
 1-800-755-5000

TELEPHONE
 AT&T
 203 GOETHE ST.
 COLLINSVILLE, ILLINOIS 62234
 62234
 1-800-244-4444

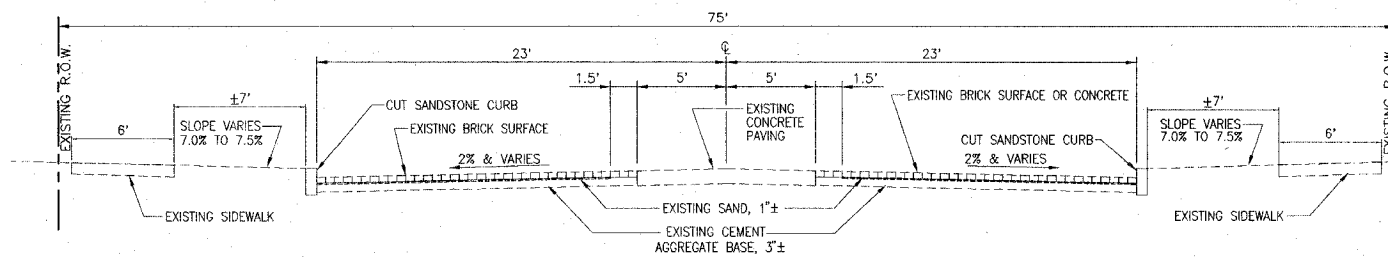
WATER & SEWER
 CITY OF LEBANON
 312 W. ST. LOUIS ST.
 LEBANON, ILLINOIS 62254
 (618) 537-4976

CABLE
 CHARTER COMMUNICATIONS
 7645 MAGNA DR.
 BELLEVILLE, ILLINOIS 62221
 (618) 236-9619



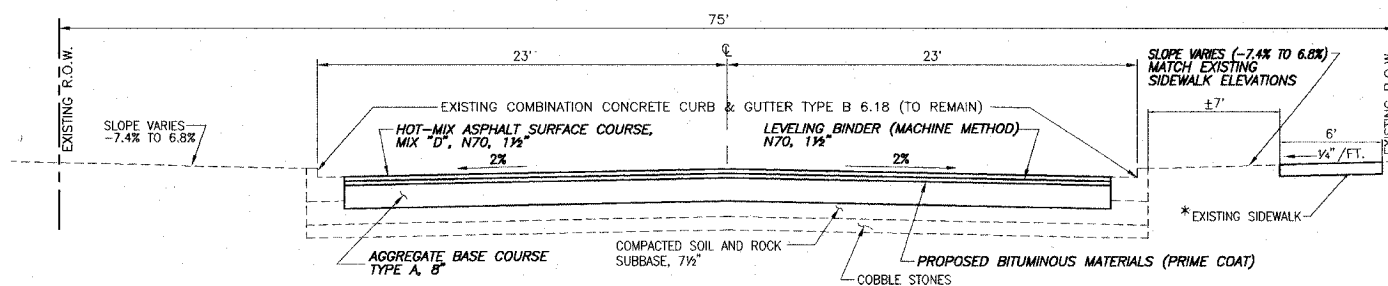
EXISTING TYPICAL SECTION

N.T.S.
 STA. 101+58 TO 104+53



EXISTING TYPICAL SECTION

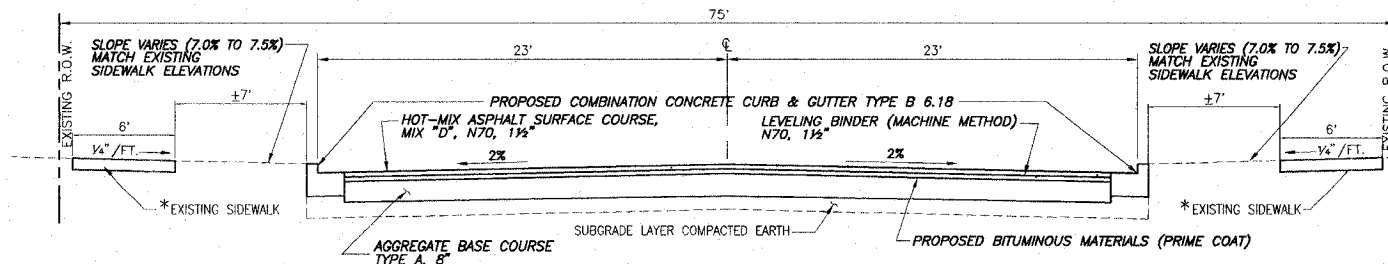
N.T.S.
 STA. 104+53 TO 104+67



PROPOSED TYPICAL SECTION

N.T.S.
 STA. 101+58 TO 104+53

* SIDEWALK TO REMAIN EXCEPT AS NOTED FOR REMOVAL AND REPLACEMENT ON PLAN VIEW

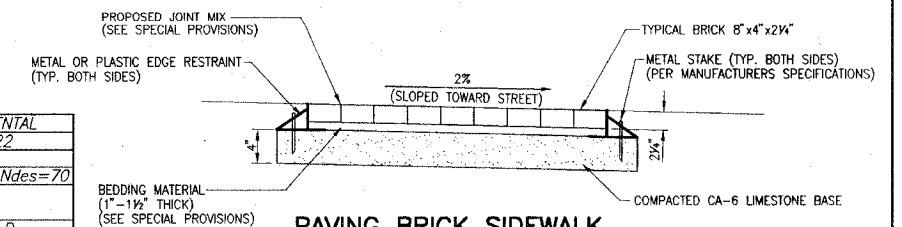


PROPOSED TYPICAL SECTION

N.T.S.
 ST. LOUIS STREET - STA. 104+53 TO 104+67

NOTE:
 BELLEVILLE STREET ENTRANCE AND HORNER STREET ENTRANCE SHALL HAVE THE SAME PROPOSED PAVEMENT COMPOSITION.

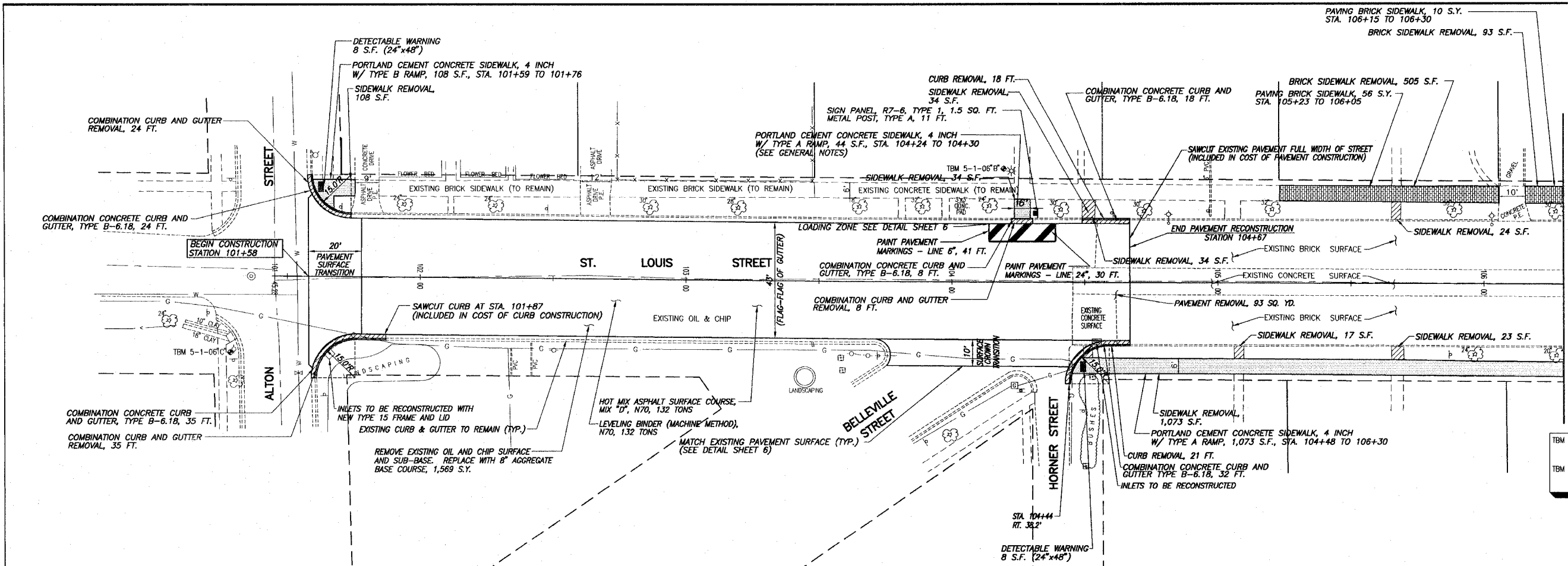
* SIDEWALK TO REMAIN EXCEPT AS NOTED FOR REMOVAL AND REPLACEMENT ON PLAN VIEW



PAVING BRICK SIDEWALK TYPICAL SECTION

N.T.S.

F.A.U. ROUTE NO.	SECTION	COUNTY	TOTAL SHEETS	SHEET NO.
9247	05-00016-00-PV	ST. CLAIR	6	3
STA. 101+58		TO STA. 111+65		
FEDERAL AID PROJECT		CONTRACT 97310		

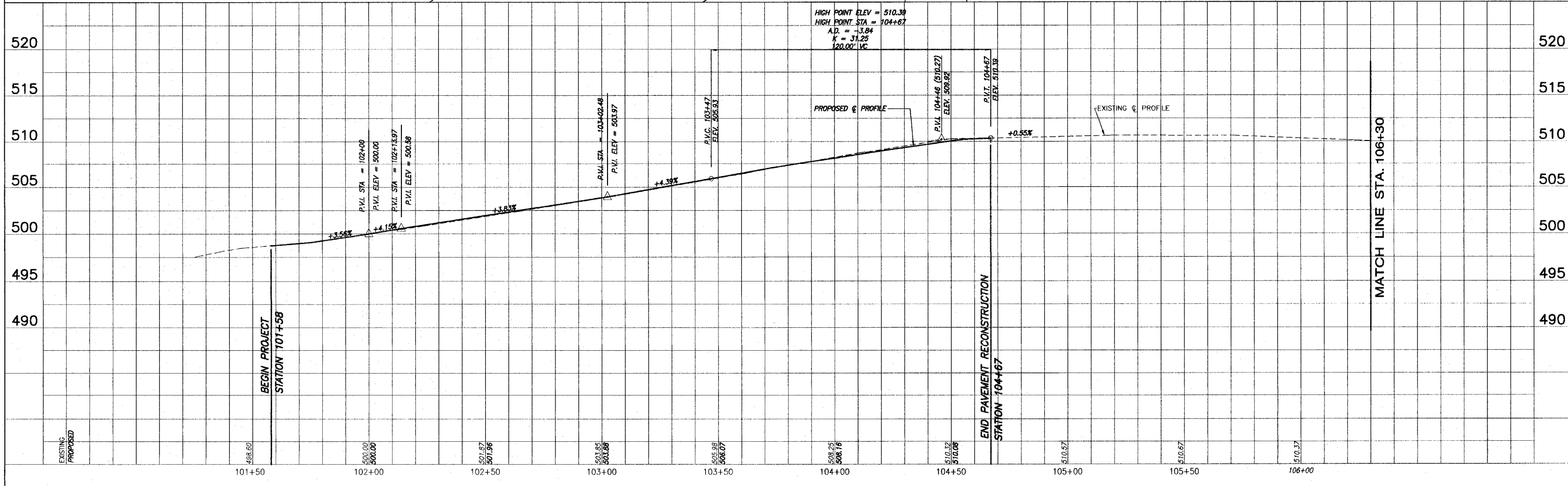


LEGEND

- - - EXISTING FLAG POLE
- - - EXISTING LIGHT POLE
- - - EXISTING POWER POLE
- - - EXISTING GUY WIRE
- - - EXISTING WATER VALVE
- - - EXISTING GAS VALVE
- - - EXISTING TREE
- - - EXISTING MANHOLE
- - - EXISTING TRAFFIC SIGN
- - - EXISTING STORM SEWER INLET
- - - EXISTING GRATED INLET
- - - EXISTING WATER LINE
- - - EXISTING GAS LINE

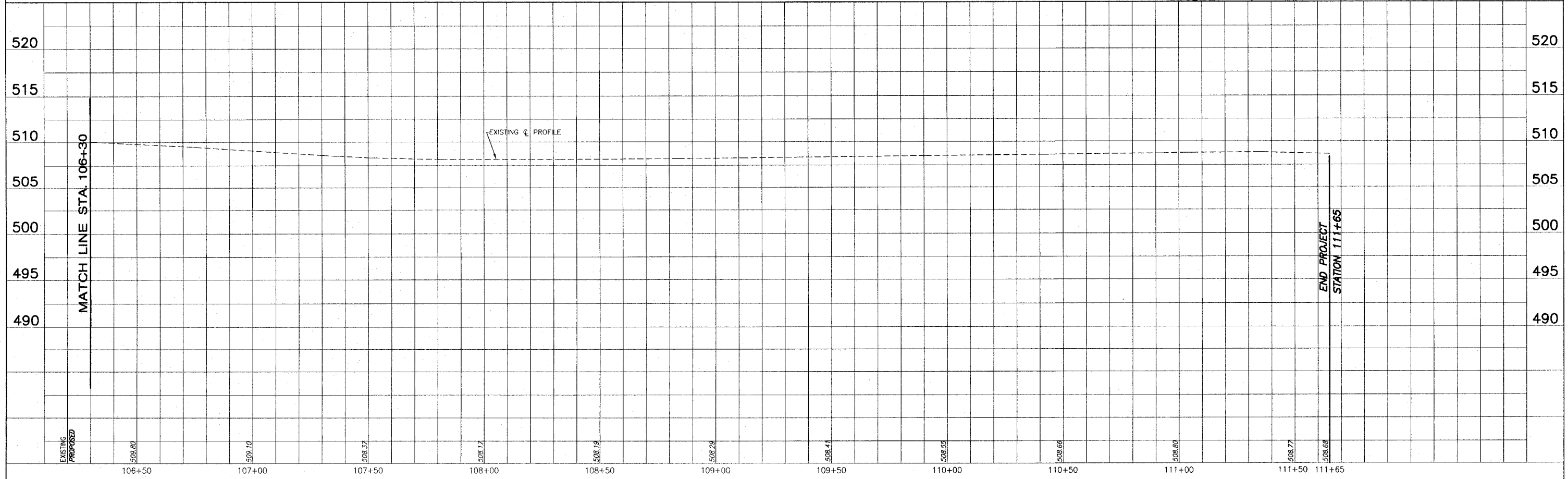
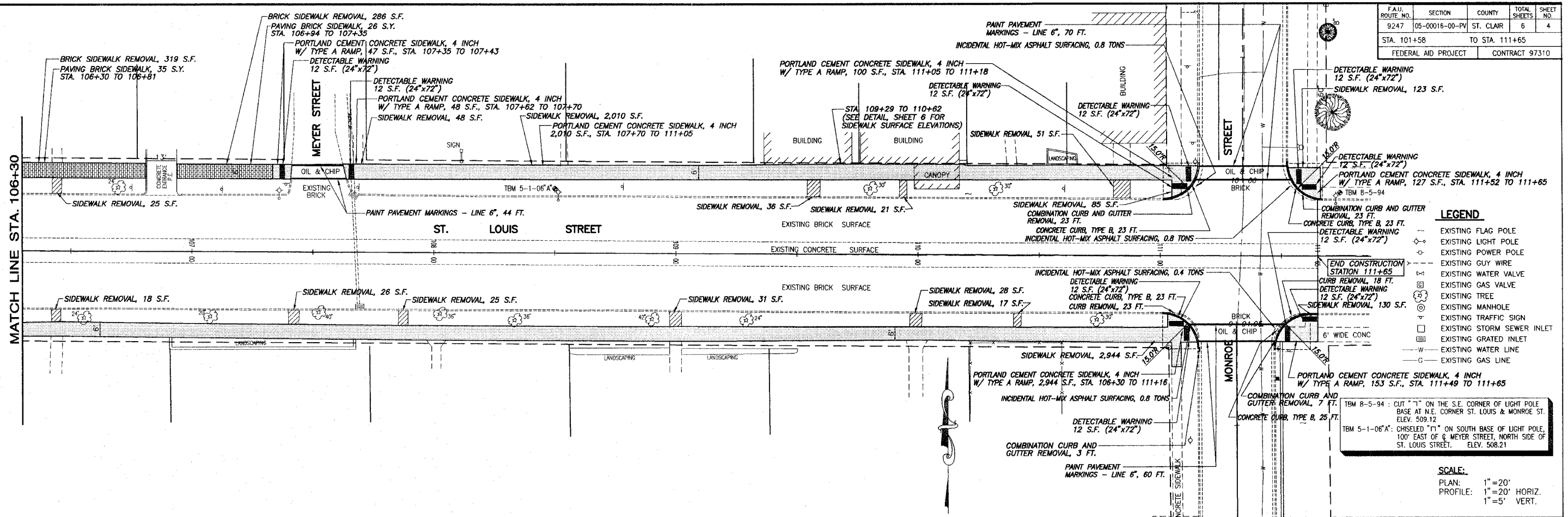
TBM 5-1-06' B: CHISELED "X" ON NORTHEAST BOLT OF BASE OF LIGHT STANDARD, LOCATED IN FRONT OF METHODIST CHURCH. ELEV. 509.23
TBM 5-1-06' C: RAILROAD SPIKE IN EAST FACE OF POWER POLE, LOCATED AT SOUTHWEST CORNER OF ALTON ST. AND ST. LOUIS STREET. ELEV. 499.40

SCALE:
PLAN: 1" = 20'
PROFILE: 1" = 20' HORIZ.
1" = 5' VERT.

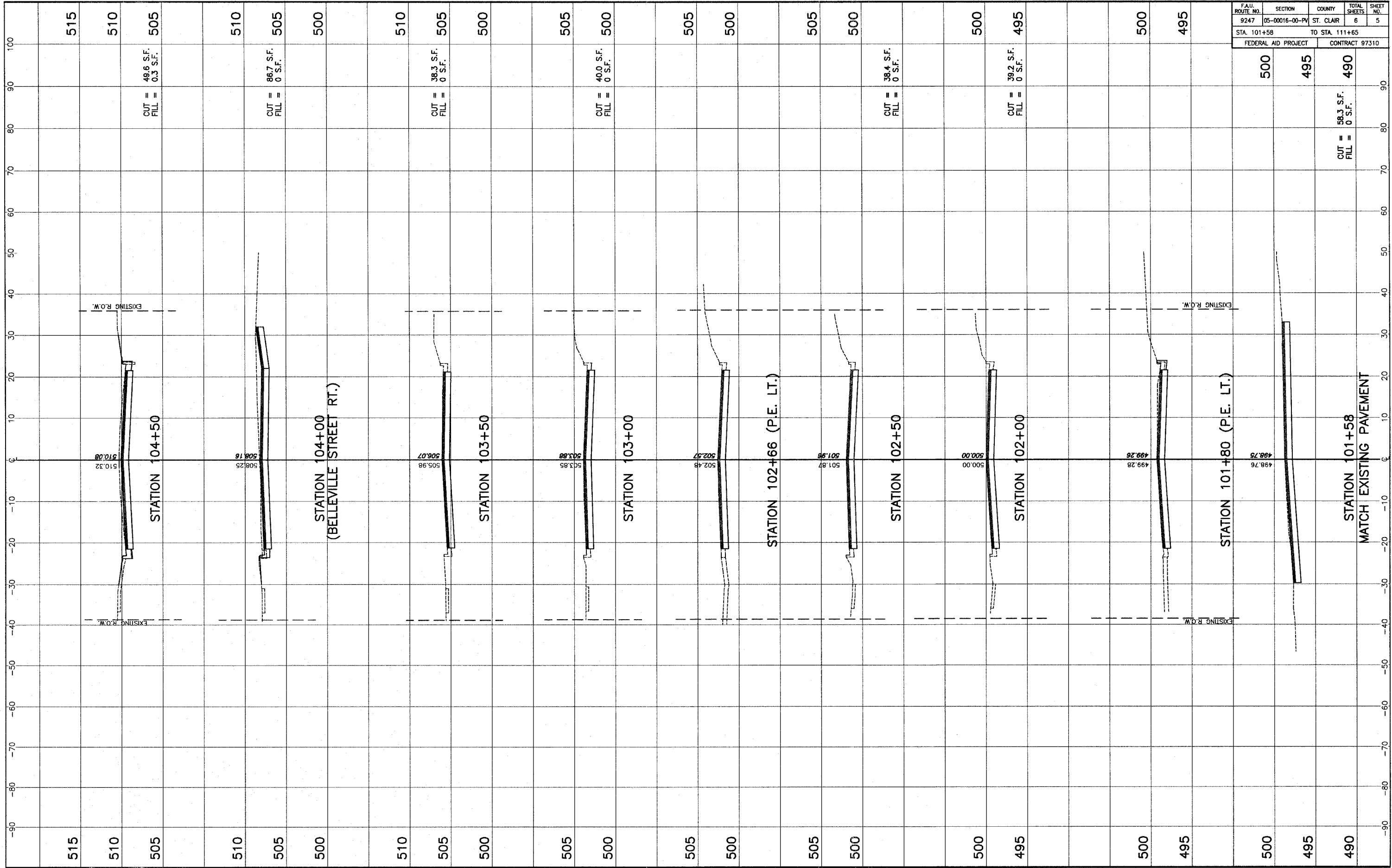


E:\M005 - Labaron - St. Louis Street - Design\dwg\02_Curp.dwg, 03/27/2002 2:41:06 PM, Plotted by M.A.L.

F.A.U. ROUTE NO.	SECTION	COUNTY	TOTAL SHEETS	SHEET NO.
9247	05-00016-00-PV	ST. CLAIR	6	4
STA. 101+58		TO STA. 111+65		
FEDERAL AID PROJECT			CONTRACT 97310	



E:\projects\Johnson St. Louis Street\Design\Sheet\03_Plan.dwg 4/26/2007 10:25:44 AM Rescaled by MAL

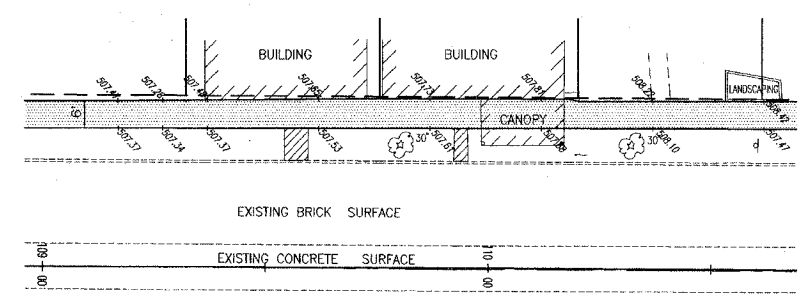


F.A.U. ROUTE NO.	SECTION	COUNTY	TOTAL SHEETS	SHEET NO.
9247	05-00016-00-PV	ST. CLAIR	6	5
STA. 101+58		TO STA. 111+65		
FEDERAL AID PROJECT		CONTRACT 97310		

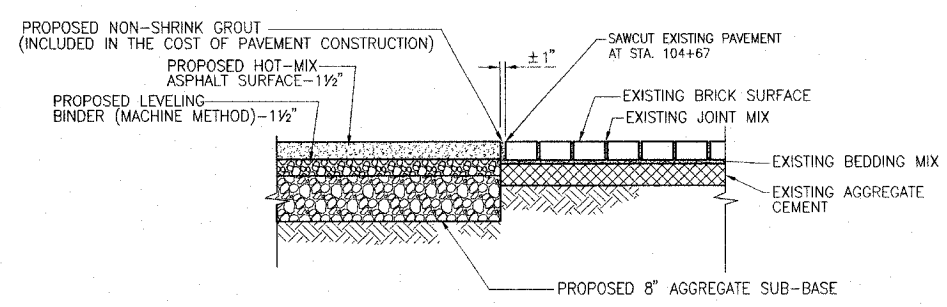
Federal Aid Project	Contract	Cut/Fill
500	495	490
		CUT = 58.3 S.F. FILL = 0 S.F.

STA. 101+58 - STA. 104+50 CROSS SECTIONS ST. LOUIS STREET
SEC. 05-00016-00-PV ST. CLAIR COUNTY

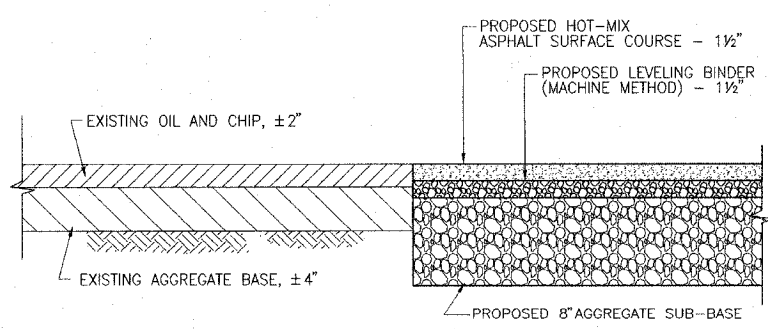
F.A.U. ROUTE NO.	SECTION	COUNTY	TOTAL SHEETS	SHEET NO.
9247	05-00016-00-PV	ST. CLAIR	6	6
STA. 101+58		TO STA. 111+65		
FEDERAL AID PROJECT		CONTRACT 97310		



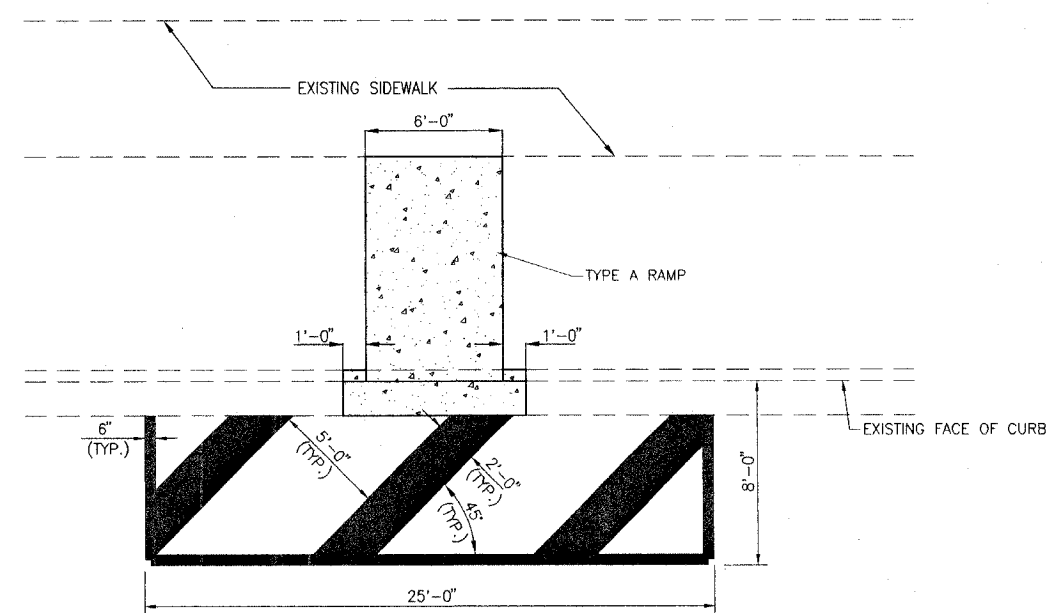
PROPOSED SIDEWALK SURFACE ELEVATIONS
 SCALE: 1"=20"
 STA. 109+29 TO STA. 110+62, LEFT SIDEWALK



PAVEMENT TRANSITION DETAIL
 STA. 104+67
 SCALE: 1"=1"



PAVEMENT TRANSITION DETAIL
 ALTON & BELLEVILLE STREETS
 N.T.S.
 STA. 101+58



LOADING ZONE STRIPING DETAIL
 N.T.S.
 STA. 104+26

E:\140005 - Johnson - St. Louis Street - Design\Drawings\Miscellaneous_Details.dwg, 4/27/2007 2:46:17 PM, Plotter: HP M.L.L.