

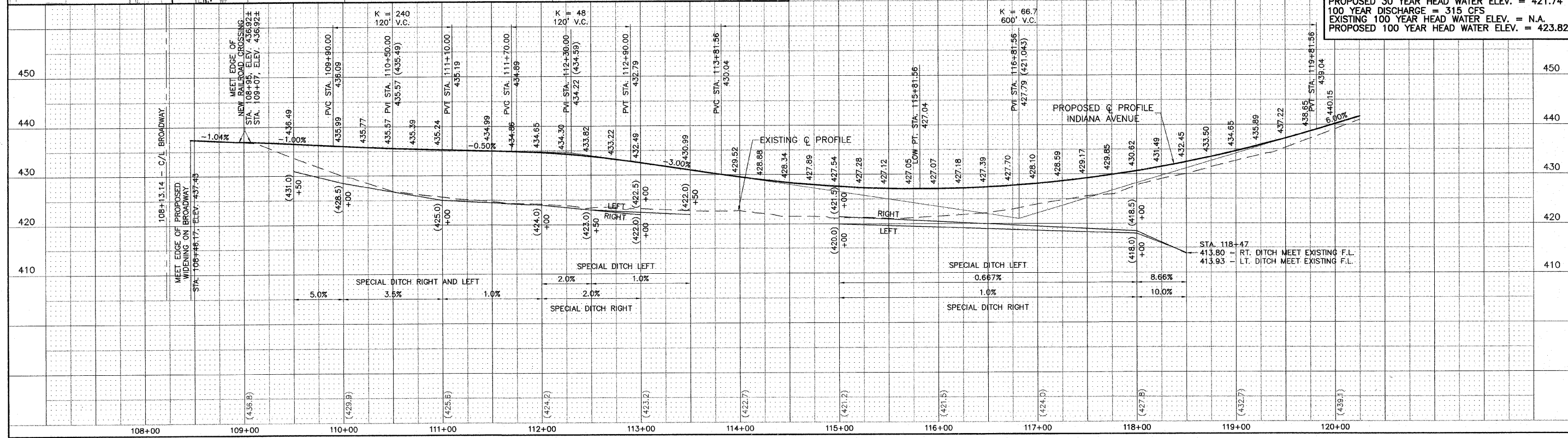
EXISTING 8' x 8' BOX CULVERT  
 EAST F.L. = 413.93  
 WEST F.L. = 413.77

2 - 36" CMP'S  
 FILLED AND  
 ABANDONED

BENCHMARKS: SEE SHEET NO. 2

**WATERWAY INFORMATION - STA. 118+60**

DRAINAGE AREA = 163 ACRES  
 EXISTING OPENING = N.A.  
 PROPOSED OPENING = 64 SQ. FT.  
 30 YEAR DESIGN DISCHARGE = 242 CFS  
 EXISTING 30 YEAR HEAD WATER ELEV. = N.A.  
 PROPOSED 30 YEAR HEAD WATER ELEV. = 421.74  
 100 YEAR DISCHARGE = 315 CFS  
 EXISTING 100 YEAR HEAD WATER ELEV. = N.A.  
 PROPOSED 100 YEAR HEAD WATER ELEV. = 423.82



NO.	DESCRIPTION

**SMS** Sheppard, Morgan & Schwaab, Inc.  
 CONSULTING ENGINEERS AND LAND SURVEYORS  
 ENGINEERS  
 215 Market Street, P.O. Box E, Alton, IL 62002 618-462-9755 E-mail: mail@smsengineers.com  
 10 Central Industrial Drive, Granite City, IL 62040 618-877-5700 E-mail: mail@smsengineers.com  
 DESIGN FIRM # 184-000992

CITY OF ALTON, ILLINOIS  
 SECTION 06 - 00208 - 02 - RP  
 CPL. CHRIS BELCHIK MEMORIAL EXPRESSWAY  
 PLAN AND PROFILE

DWG. NO.  
 PH III BWAY-120 PP.DWG  
 REF. BK. INDIANA AVE.  
 JOB NO. 406365.1  
 DSN. BY: DEG  
 DWN. BY: CAD  
 CHK. BY: DEG  
 DATE: OCTOBER, 2006  
 SCALE: 1" = 50' H.  
 1" = 10' V.  
 SHEET 13 OF 61

S:\Land Projects\Alton Indiana Ph III-406365-1\org\PH III Bway-120 PP.dwg, 2/12/2007 10:37 PM, jma, 150