

FOR UTILITY LOCATION PURPOSES, THIS PROJECT IS LOCATED IN THE N.E. AND S.E. QUARTERS OF SECTION 13, TOWNSHIP 5 NORTH, RANGE 10 WEST OF THE THIRD PRINCIPAL MERIDIAN.

AGENCIES KNOWN TO HAVE UNDERGROUND FACILITIES WITHIN THE LIMITS OF THIS IMPROVEMENT ARE SHOWN BELOW (MEMBERS OF JULIE, PHONE (800) 892-0123, ARE INDICATED BY \*).

- \* CHARTER COMMUNICATIONS  
508 NIAGARA  
EAST ALTON, IL 62024  
(618) 251-2660
- \* SBC COMMUNICATIONS  
203 GOETHE  
COLLINSVILLE, IL 62234  
(618) 346-6400
- \* AMEREN UE  
700 OAKWOOD AVENUE  
P.O. BOX 478  
ALTON, IL 62002  
(618) 463-4043 (GAS)  
(618) 463-4051 (ELECTRIC)
- CITY OF ALTON  
PUBLIC WORKS DEPARTMENT  
#2 EMMA L. KAUS LANE  
ALTON, IL 62002  
(618) 463-3530
- \* CENTER POINT ENERGY  
11839 BLUFF ROAD  
COLUMBIA, IL 62236  
(618) 799-9098
- \* ILLINOIS AMERICAN WATER CO.  
4436 INDUSTRIAL DRIVE  
P.O. BOX 186  
ALTON, IL 62002  
(618) 466-2131

STATE OF ILLINOIS  
DEPARTMENT OF TRANSPORTATION  
DIVISION OF HIGHWAYS  
FEDERAL AID HIGHWAY

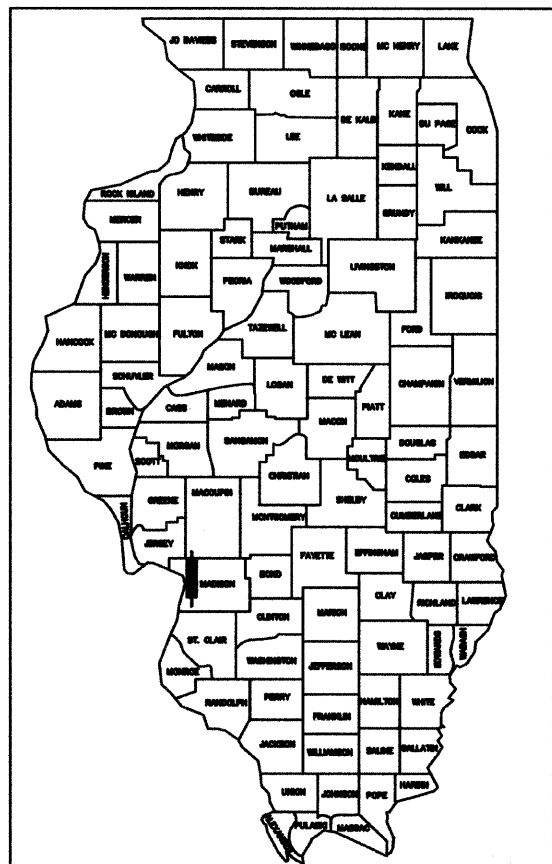
CPL. CHRIS BELCHIK MEMORIAL EXPRESSWAY

(FORMERLY KNOWN AS INDIANA AVE. EXTENSION - PHASE III)

SECTION 06-00208-02-RP  
FAU ROUTE 8966  
PROJECT HPD-0387 (005)  
CITY OF ALTON  
MADISON COUNTY  
JOB C-98-382-06

SECTION	COUNTY	TOTAL SHEETS	SHEET NO.
*	MADISON	61	1

FEDERAL AID PROJECT  
\* 06-00208-02-RP  
CONTRACT NO. 97291



LOCATION OF SECTION INDICATED THUS:—

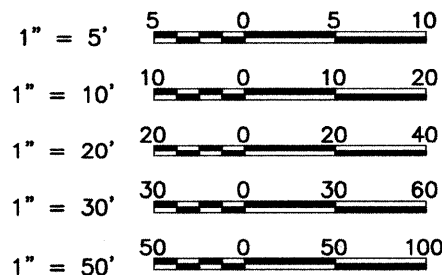
INDEX TO SHEETS

1. COVER SHEET
2. GENERAL NOTES, LEGEND & CONTROL POINTS
- 3.-4. SUMMARY OF QUANTITIES
- 5.-7. TYPICAL SECTIONS
8. ENTRANCE DETAILS
9. DETAILS OF CONSTRUCTION
- 10.-11. TRAFFIC CONTROL PLANS
12. CLEARING PLAN
- 13.-15. PLAN AND PROFILE
- 16.-17. PLAN EAST BROADWAY
18. PLAN EAST BROADWAY (REMOVAL ITEMS)
19. MORRISON AVENUE INTERSECTION
- 20.-24. DETAILED PLANS - CPL. CHRIS BELCHIK MEMORIAL EXPRESSWAY
25. EROSION CONTROL PLAN
26. PAVEMENT MARKING & SIGNING PLAN - EAST BROADWAY
- 27.-29. PAVEMENT MARKING & SIGNING PLAN
- 30.-32. TRAFFIC SIGNAL PLANS - AT EAST BROADWAY
- 33.-35. TRAFFIC SIGNAL PLANS - AT RIVER HERITAGE PARKWAY
- 36.-41. ROADWAY LIGHTING PLANS
- 42.-57. CROSS SECTIONS - CPL. CHRIS BELCHIK MEMORIAL EXPRESSWAY
- 58.-59. CROSS SECTIONS - MORRISON AVENUE
- 60.-61. CROSS SECTIONS - EAST BROADWAY

HIGHWAY STANDARDS

SEE SHEET NO. 2

SCALES

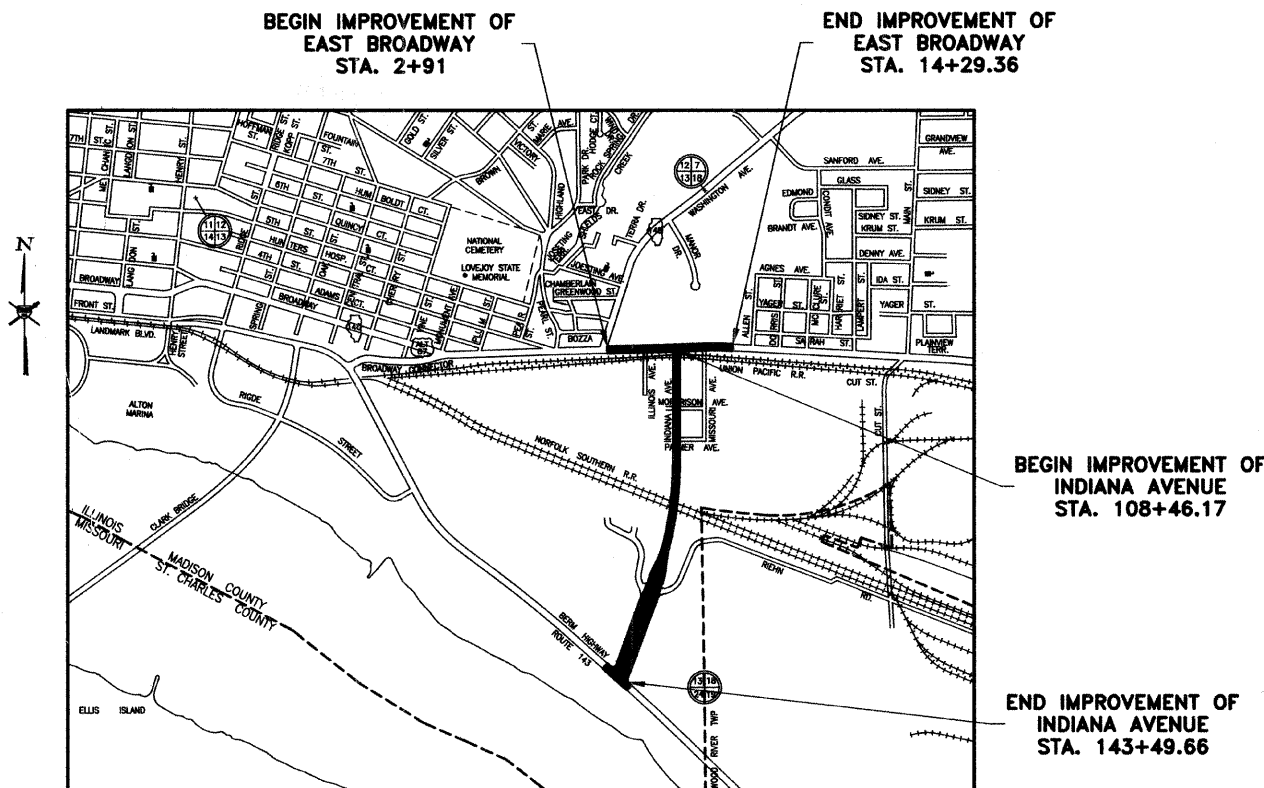


FULL SIZE PLANS HAVE BEEN PREPARED USING STANDARD ENGINEERING SCALES. REDUCED SIZED PLANS WILL NOT CONFORM TO STANDARD SCALES. IN MAKING MEASUREMENTS ON REDUCED PLANS THE ABOVE SCALES MAY BE USED.

DESIGN DESIGNATION - 1,420 (2027) URBAN COLLECTOR 8.856 (PCC-20)

DESIGN SPEED = 40 M.P.H.

CONTRACT NO. 97291



LOCATION MAP



NET LENGTH OF EAST BROADWAY IMPROVEMENT = 1,138.36 FEET = 0.216 MILES  
NET LENGTH OF INDIANA AVENUE IMPROVEMENT = 3,503.49 FEET = 0.664 MILES  
TOTAL NET LENGTH OF PROJECT = 4641.85 FEET = 0.879 MILES



Sheppard Morgan & Schwaab, Inc.

CONSULTING ENGINEERS & LAND SURVEYORS

215 Market Street  
Alton, Illinois 62002  
P.O. Box E  
618/462-9755

10 Central Industrial Dr  
Northgate Center  
Granite City, IL 62040  
618/877-8700

ILLINOIS DEPARTMENT OF TRANSPORTATION	
Approved	3-15-2007 <i>David E. Godar</i> City of Alton, Mayor
Passed	March 21, 2007 <i>Janice Oberlin</i> District #8 Engineer of Local Roads & Streets
Releasing for Bid Based on Limited Review	3-21-07 <i>Mary C. Lammie</i> Deputy Director of Highways, Region #5 Engineer



*David E. Godar*

DATE SIGNED 3-15-07  
EXPIRATION DATE 11-30-07