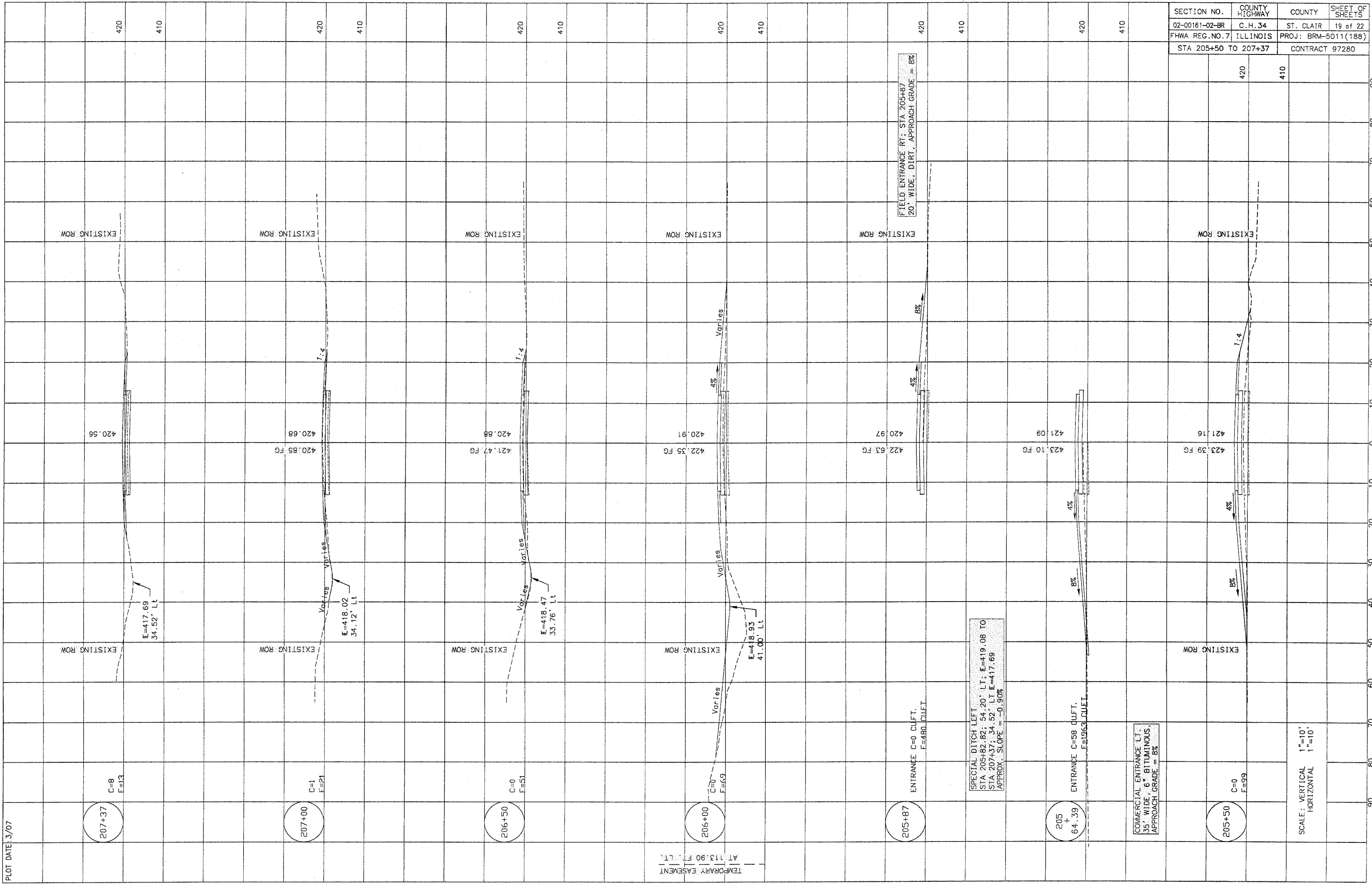


PLOT DATE: 3/07



SECTION NO.	COUNTY HIGHWAY	COUNTY	SHEET OF SHEETS
02-00161-02-BR	C.H. 34	ST. CLAIR	19 of 22
FHWA REG. NO. 7		ILLINOIS	PROJ: BRM-5011(188)
STA 205+50 TO 207+37		CONTRACT 97280	

SCALE: VERTICAL 1"=10'
 HORIZONTAL 1"=10'

SPECIAL DITCH LEFT
 STA. 205+82.82; 54.20' LT; E=419.08 TO
 STA. 207+37; 34.52' LT E=417.69
 APPROX. SLOPE = -0.90%

COMMERCIAL ENTRANCE LT
 35' WIDE, 6" BITUMINOUS
 APPROACH GRADE = 8%

FIELD ENTRANCE RT; STA. 205+87
 20' WIDE, DIRT, APPROACH GRADE = 8%

TEMPORARY EASEMENT
 AT 113.90 FT. LT.