

STATE OF ILLINOIS
DEPARTMENT OF TRANSPORTATION

PLANS FOR PROPOSED HIGHWAY BRIDGE PROGRAM

ROUTE	SECTION	COUNTY	TOTAL SHEETS	SHEET NO.
TR 293	96-10120-01-BR	CLAY	13	1
FED. ROAD DIST. NO. 7		ILLINOIS	FEDERAL AID PROJECT	
		CONTRACT NO. 95514		

INDEX OF SHEETS

- 1 TITLE SHEET
- 2 SUMMARY OF QUANTITIES, TYPICAL SECTIONS, AND GENERAL NOTES
- 3 PLAN & PROFILE OF ROADWAY
- 4 EROSION CONTROL PLAN
- 5-6 CROSS SECTIONS OF ROADWAY
- 7 CROSS SECTIONS OF RAILROAD
- 8 GENERAL PLAN AND ELEVATION
- 9-10 PRECAST PRESTRESSED CONCRETE DECK BEAM DETAILS
- 11 STEEL RAILING, TYPE S1 (SPECIAL) DETAILS
- 12 ABUTMENT AND WINGWALL DETAILS
- 13 PIER DETAILS

STANDARDS SHOWN BELOW ARE INCLUDED IN THE PLANS AFTER SHEET NO. 13

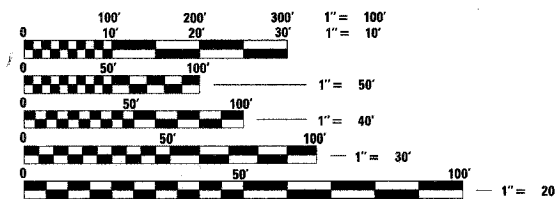
STD. NO. 000001-04 SYMBOLS AND ABBREVIATIONS
STD. NO. 280001-03 TEMPORARY EROSION CONTROL SYSTEMS
STD. NO. 515001-02 NAME PLATE FOR BRIDGES
STD. NO. 630301-04 SHOULDER WIDENING FOR TYPE 1 (SPECIAL) GUARDRAIL TERMINALS
STD. NO. 631026-03 TRAFFIC BARRIER TERMINAL TYPE S
STD. NO. 635006-02 REFLECTOR AND TERMINAL MARKER PLACEMENT
STD. NO. 702001-06 TRAFFIC CONTROL DEVICES
STD. NO. BLR 21-6 TYPICAL APPLICATION OF TRAFFIC CONTROL DEVICES FOR CONSTRUCTION ON RURAL LOCAL HIGHWAYS

SOIL BORINGS (INCLUDED IN PROJECT SPECIFICATIONS)

Revised 6-5-07

DESIGN CLASSIFICATION: RURAL LOCAL ROAD

ADT₂₀₀₇ : 50
ADT₂₀₂₇ : 75
DESIGN SPEED - 30 MPH

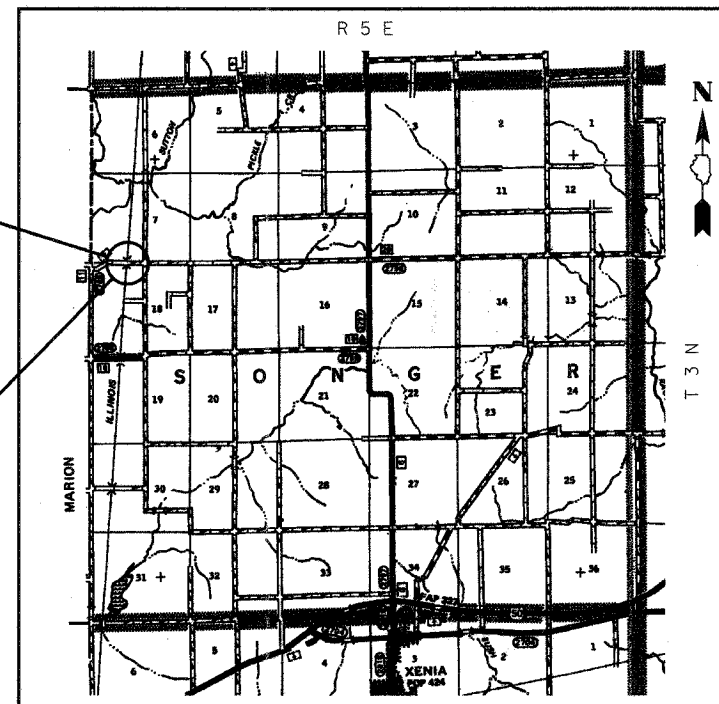


FULL SIZE PLANS HAVE BEEN PREPARED USING STANDARD ENGINEERING SCALES, REDUCED SIZED PLANS WILL NOT CONFORM TO STANDARD SCALES, IN MAKING MEASUREMENTS ON REDUCED PLANS, THE ABOVE SCALES MAY BE USED.

J.U.L.I.E.
JOINT UTILITY LOCATING INFORMATION FOR EXCAVATORS
1-800-892-0123 Website: <http://www.illinois1call.com>

CONTRACT NUMBER 95514

TR 293 (REDWOOD LANE) SECTION 96-10120-01-BR OVER CN / IC RAILROAD SONGER ROAD DISTRICT PROJECT NO. BROS-025(57) CLAY COUNTY C-97-052-05

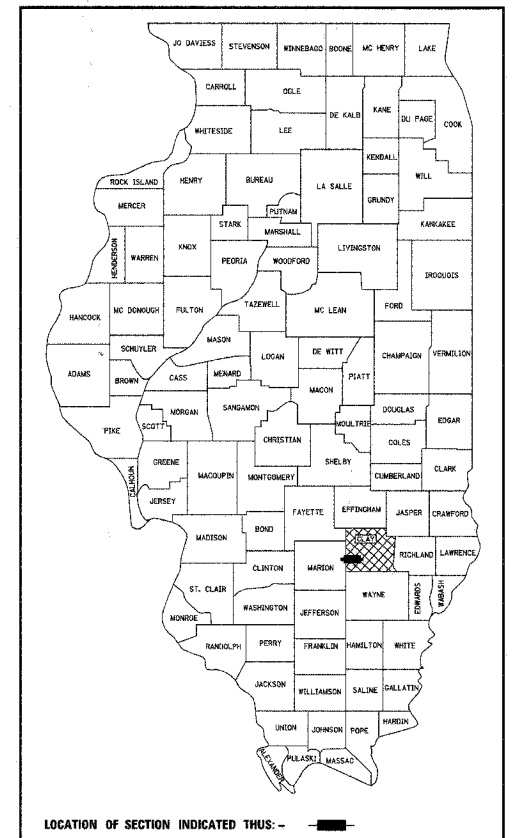


SECTION BEGINS
STA. 44+25.00

SECTION 96-10120-01-BR INCLUDES THE REMOVAL OF AN EXISTING SEVEN-SPAN TIMBER BRIDGE AND CONSTRUCTION OF A THREE (3) SPAN BRIDGE WITH PPCDB SUPERSTRUCTURE CARRYING TR 293 OVER THE CN/IC RR. 150'-6" BK.-BK. ABUTMENTS 24'-0" OUT TO OUT DECK. 0° SKEW. EXISTING S.N. 013-9913 PROPOSED S.N. 013-9918

SECTION ENDS
STA. 55+75.00

LOCATION: NEAR THE NW CORNER, NE 1/4, NW 1/4, SECTION 18, T3N, R5E, 3RD P.M.
NET LENGTH OF SECTION 96-10120-01-BR: 1150.00 FT = 0.218 MI



LOCATION OF SECTION INDICATED THUS: -

APPROVED FOR CLEARANCE ONLY MARCH 2, 2007

JOHN M. HENRIKSEN
MANAGER OF PUBLIC WORKS
CANADIAN NATIONAL RAILROAD

STATE OF ILLINOIS
DEPARTMENT OF TRANSPORTATION

APPROVED APRIL 4, 2007
CLAY COUNTY, COUNTY ENGINEER

PASSED 4/11, 2007
DISTRICT SEVEN ENGINEER OF LOCAL ROADS & STREETS

RELEASING FOR BID
BASED ON LIMITED
REVIEW 4/11, 2007
DEPUTY DIRECTOR OF HIGHWAYS, REGION FOUR ENGINEER



GARY L. HAHN 4.03.07
GARY L. HAHN
CENTRALIA, ILLINOIS
ILLINOIS LICENSED PROFESSIONAL
ENGINEER NO. 62-42606
EXPIRES NOV. 30, 2007

RHUTASEL and ASSOCIATES, INC.
CONSULTING ENGINEERS • LAND SURVEYORS
CENTRALIA, ILLINOIS FREEBURG, ILLINOIS
ILLINOIS DESIGN FIRM LICENSE NO. 184-000287

Sheet
1
of 13
Job No. 51005