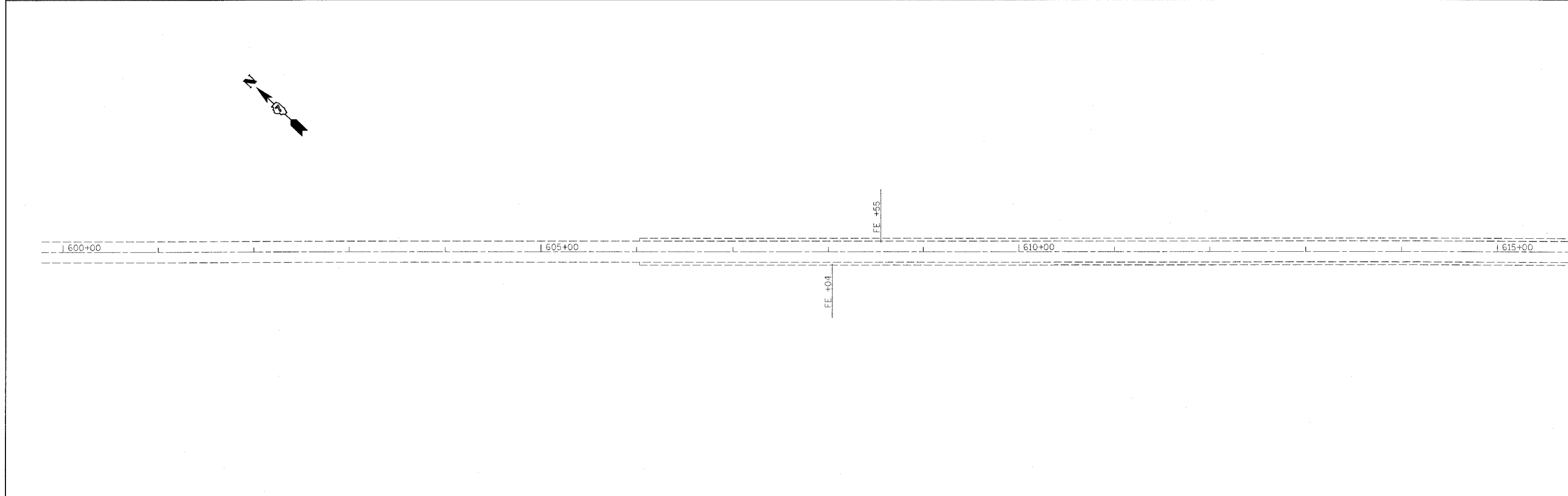
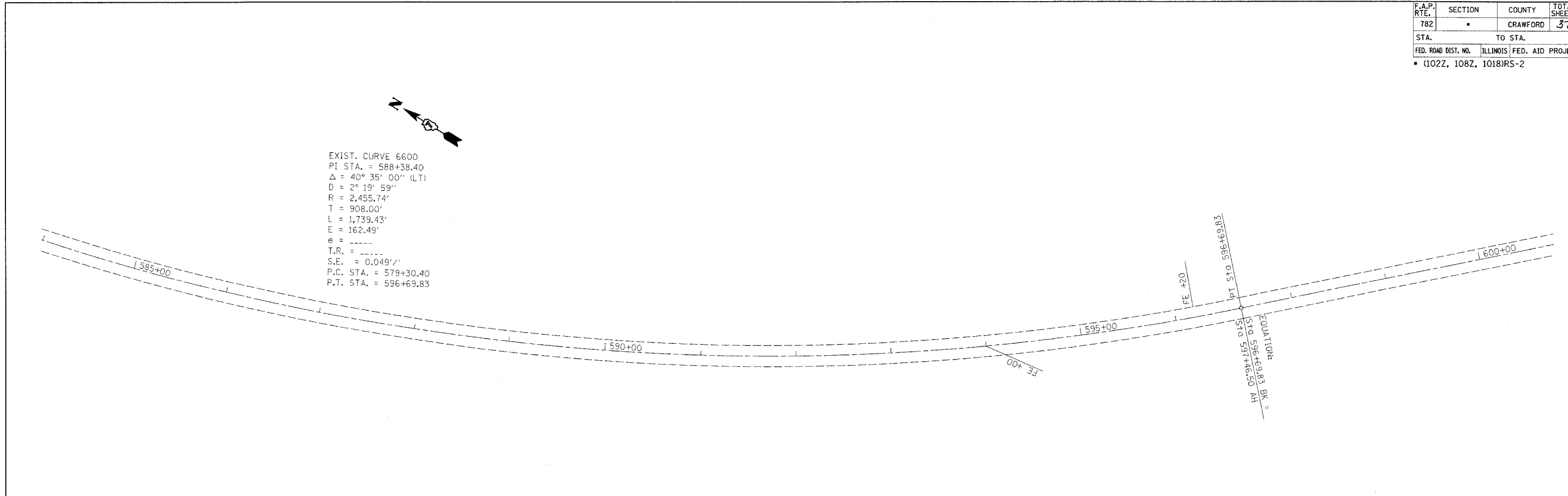


F.A.P. RTE.	SECTION	COUNTY	TOTAL SHEETS	SHEET NO.
782	*	CRAWFORD	37	36

STA. TO STA.
 FED. ROAD DIST. NO. ILLINOIS FED. AID PROJECT
 * (102Z, 108Z, 1018)RS-2

EXIST. CURVE 6600
 PI STA. = 588+38.40
 $\Delta = 40^\circ 35' 00''$ (LT)
 $D = 2^\circ 19' 59''$
 $R = 2,455.74'$
 $T = 908.00'$
 $L = 1,739.43'$
 $E = 162.49'$
 $e = \text{-----}$
 $T.R. = \text{-----}$
 $S.E. = 0.049'/'$
 P.C. STA. = 579+30.40
 P.T. STA. = 596+69.83



PLOT DATE * DATE *
 PLOT SCALE * SCALE *
 USER NAME * USER *