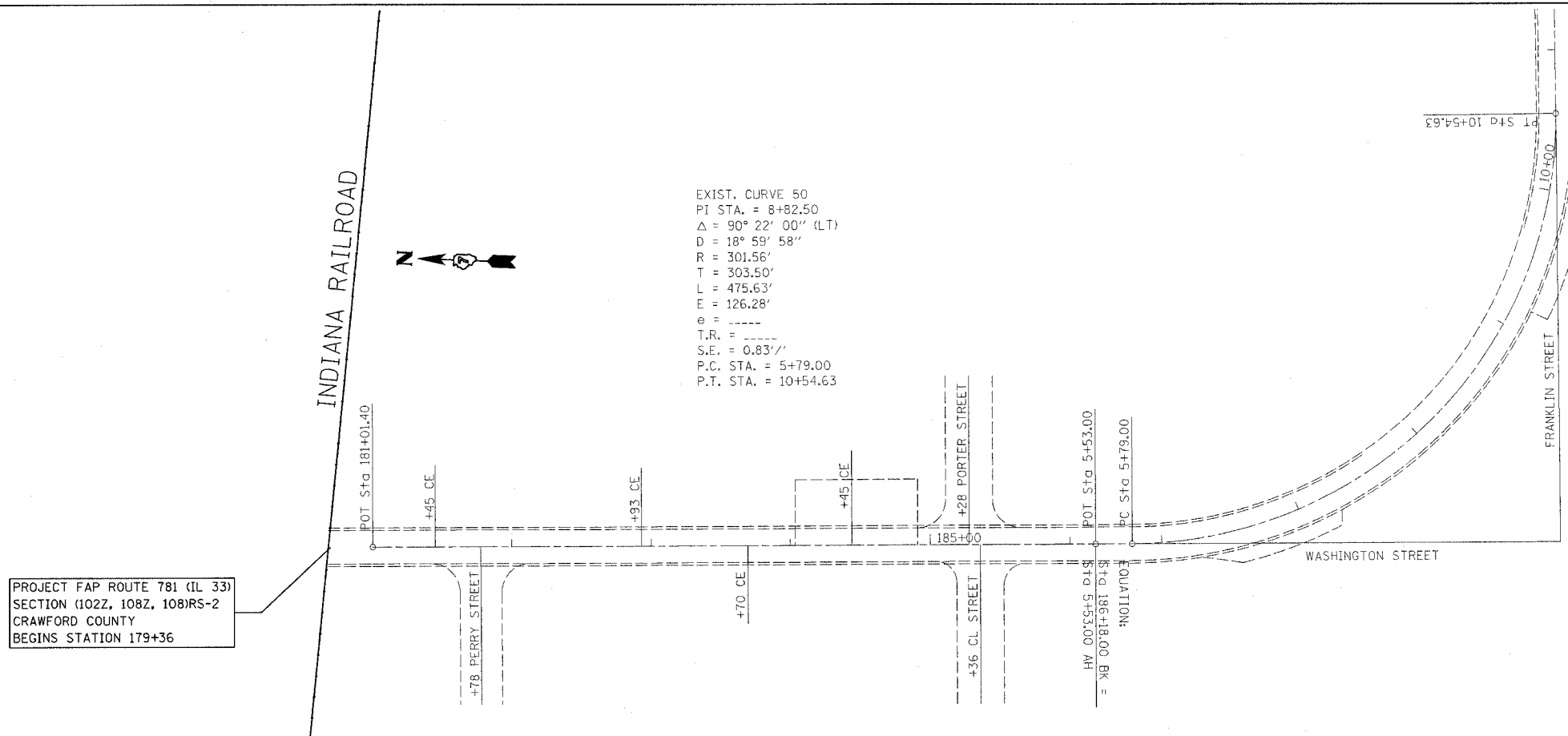


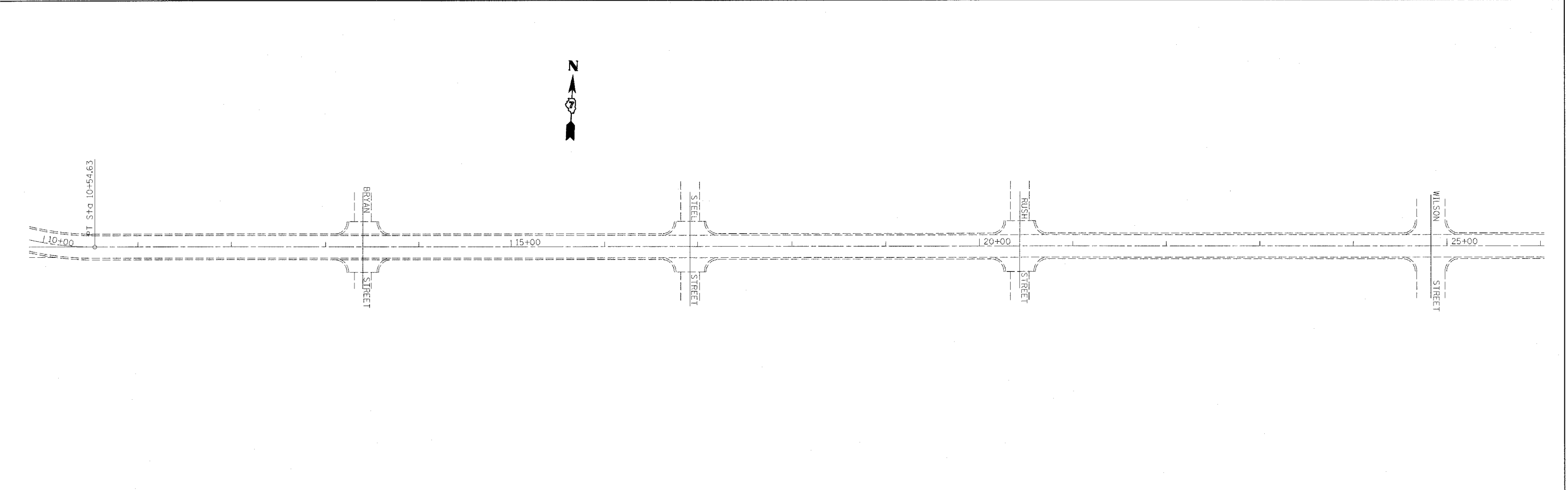
F.A.P. RTE.	SECTION	COUNTY	TOTAL SHEETS	SHEET NO.
782	*	CRAWFORD	37	15
STA.		TO STA.		
FED. ROAD DIST. NO.	ILLINOIS	FED. AID PROJECT		
• (102Z, 108Z, 1018)RS-2				



PROJECT FAP ROUTE 781 (IL 33)
 SECTION (102Z, 108Z, 108)RS-2
 CRAWFORD COUNTY
 BEGINS STATION 179+36

GUTTERS TO BE CLEANED

8+25.00	TO 10+23.00	198
10+23.00	TO 40+92.00	6138
0+00.00	TO 18+32.70	3665
18+32.70	TO 20+42.00	419
20+42.00	TO 22+50.00	208
22+50.00	TO 27+29.00	479
		11107 FEET



PLOT DATE = 04/26/08
 PLOT SCALE = AS SHOWN
 USER NAME = 01/USER