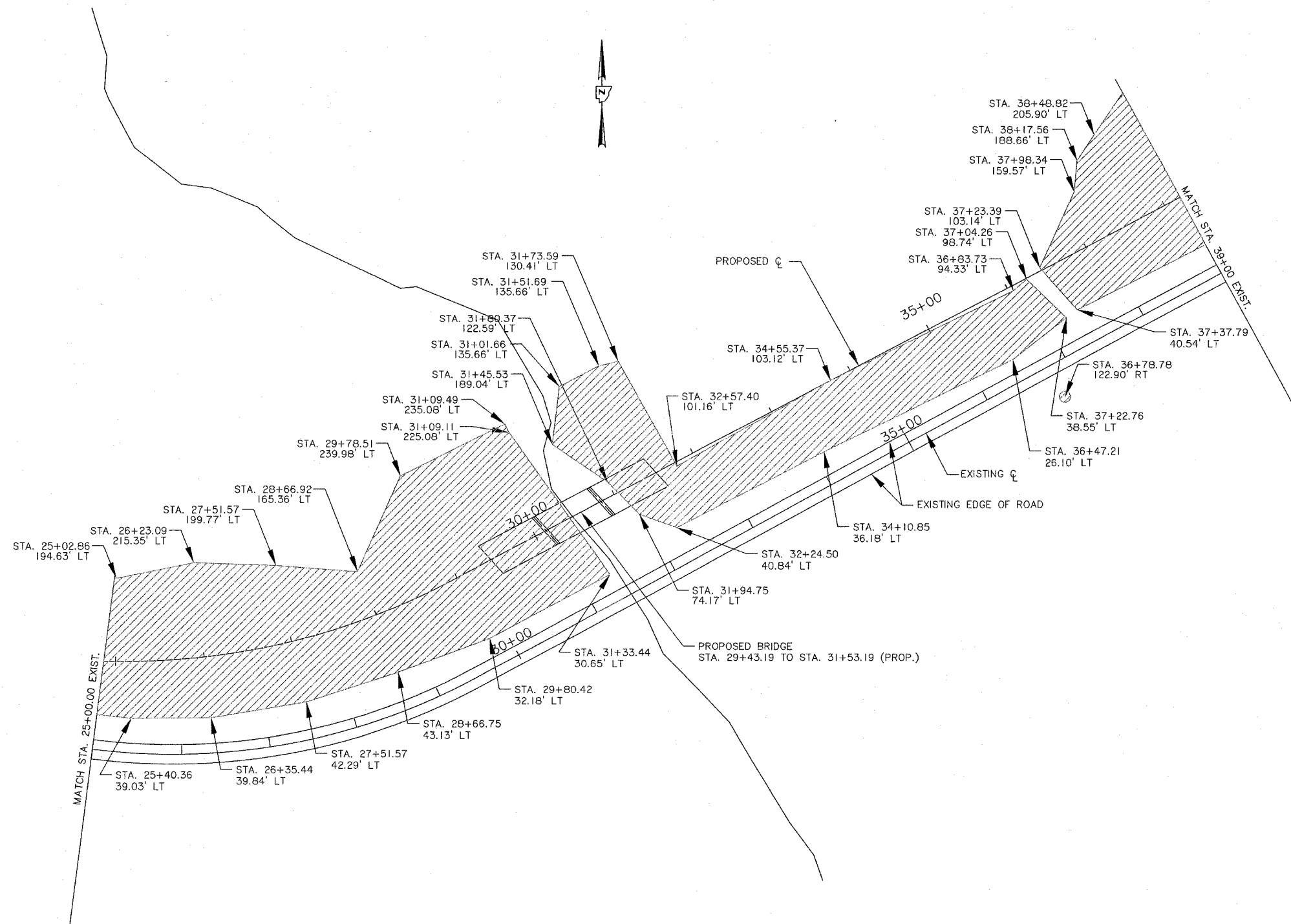


ROUTE NO.	SECTION	COUNTY	TOTAL SHEETS	SHEET NO.
FAS 389	93-00049-00-BR	PEORIA	99	57
FED. ROAD DIST. NO.	7	ILLINOIS	PROJECT:	BRS-0389(104)
CONTRACT NO. 89323				

*GENERAL NOTE: ALL PLAN STATIONS AND OFFSETS GIVEN ARE BASED ON EXISTING ALIGNMENT
 QUANTITY STATIONS AND OFFSETS GIVEN ARE BASED ON EXISTING ALIGNMENT
 TREE REPLACEMENT LOCATIONS TO BE DETERMINED IN THE FIELD BY THE ENGINEER

 TREE REMOVAL



SCALE
 0 50 100 200

TREE REMOVAL DETAIL
 STA. 25+00 TO STA. 38+00
 PEORIA COUNTY
 STRUCTURE NO. 072-3145