

Notes:
 After beams have been erected, holes shall be drilled into substructure and anchor dowels placed. Dowel holes shall be filled with non-shrink grout to top of beam and allowed to cure min. 24 hrs. prior to grouting the shear keys.
 All horizontal dimensions are at right angles to beam ends.
 Hatched area to be poured after concrete wearing surface is in place. Concrete for back wall is paid for as Concrete Structures.

NOTES

The Backwall and the portion of the wingwalls above the bonded construction joint shall be cast against the in-place beam.

Space reinforcement in cap to miss dowel rods.

A benchmark shall be installed in the flat portion of one of the wingwalls. A benchmark disk shall be furnished to the Contractor by the Engineer and installed as directed by the Engineer. Cost included with Concrete Structures.

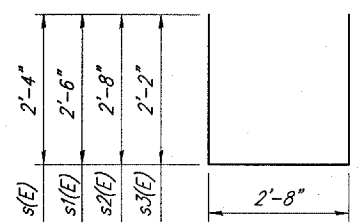
East Abutment piles shall be driven through 18" diameter precored holes extending to Elev. 510.00 according to Article 512.09(c) of the Standard Specifications. Cost included in driving piles.

Apply Concrete Sealer to front face and top surfaces of wingwalls; front face and beam seat surfaces of abutments.

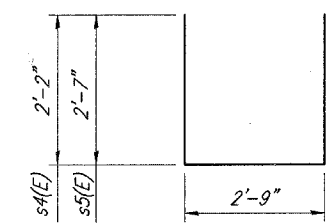
The Steel H-piles shall be according to AASHTO M270 Grade 50.

The test pile(s) shall be driven to 110 percent of the Nominal Required Bearing indicated in the pile data information.

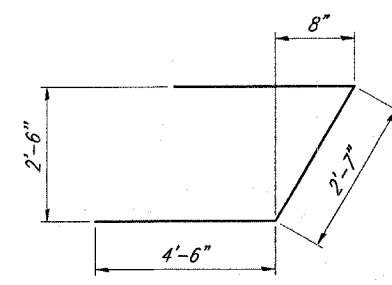
SECTION THRU ABUTMENT
(At Right Angles)



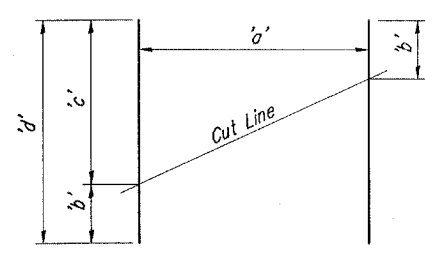
BARS s(E) thru s3(E)



BARS s4(E) & s5(E)



BAR u(E)



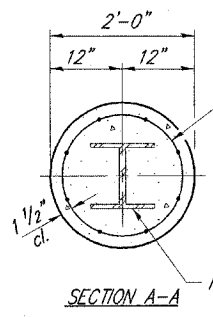
v2(E) thru v5(E) FIELD CUTTING DIAGRAM

Order bars full length. Cut as shown and use remainder of bars in opposite face.

Bar	a'	b'	c'	d'
v2(E)	6	4'-2"	6'-2"	10'-4"
v3(E)	6	3'-9"	5'-8"	9'-5"
v4(E)	6	3'-7"	5'-7"	9'-2"
v5(E)	6	4'-5"	6'-4"	10'-9"

BILL OF MATERIAL - 2 ABUTMENTS

Bar	No.	Size	Length	Shape
h(E)	76	#4	7'-6"	—
h1(E)	48	#4	16'-0"	—
p(E)	48	#7	24'-9"	—
s(E)	28	#5	7'-4"	□
s1(E)	60	#5	7'-8"	□
s2(E)	32	#5	8'-0"	□
s3(E)	64	#5	7'-0"	□
s4(E)	4	#5	7'-1"	□
s5(E)	4	#5	7'-11"	□
u(E)	16	#6	11'-7"	┘
v1(E)	184	#4	4'-8"	—
v2(E)	6	#4	10'-4"	—
v3(E)	6	#4	9'-5"	—
v4(E)	6	#4	9'-2"	—
v5(E)	6	#4	10'-9"	—
Concrete Structures		Cu. Yd.	44.2	
Reinforcement Bars, Epoxy Coated		Pound	5820	
Structure Excavation		Cu. Yd.	110	
Furnishing Steel Piles HP 12x53		Foot	456	
Driving Piles		Foot	456	
Test Piles, Steel HP 12x53		Each	2	
Pile Shoes		Each	14	
Concrete Encasement		Cu. Yd.	4.9	
Concrete Sealer		Sq. Ft.	680	



Welded wire fabric 6 x 6-W4.0 x W4.0 weighing 58#/100 sq. ft. The cost of Excavation, Concrete Encasement and Reinforcement is included with Furnishing Piles. Forms for Encasement may be omitted when soil conditions permit.

PILE ENCASUREMENT DETAIL

REVISION

DATE

Hanson No. 08P2008
 Filename: PILE-BENT-DETLING
 Scale: 04/06/07
 Date: 04/06/07

LAYOUT: 10/12/06
 DRAWN: EJM
 REVIEWED: JJT

Phone: (309) 691-0902
 Fax: (309) 691-1327
 www.hanson-inc.com
 Offices Nationwide

HANSON
 Hanson Professional Services Inc.
 2900 W. Willow Knolls Road
 Peoria, Illinois 61614-1129

PEORIA COUNTY, ILLINOIS

LANCASTER RD. OVER LAMARSH CREEK
 STRUCTURE NO. 072-3145

29
 29 of 99 sheets