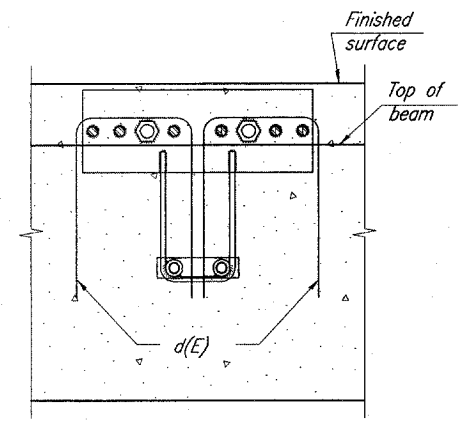


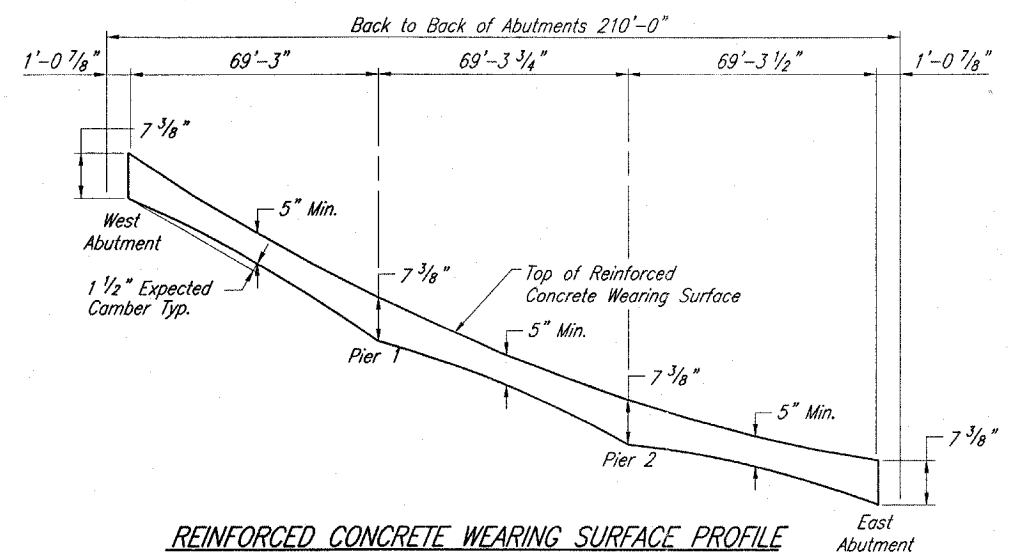
Note:  
Order  $a_3(e)$  thru  $a_5(E)$  bars full length.  
Cut in field as shown and use remainder  
of bars in opposite end of the deck.

**CUT DIAGRAM  $a_3(E)$ ,  $a_4(E)$  &  $a_5(E)$  BARS**

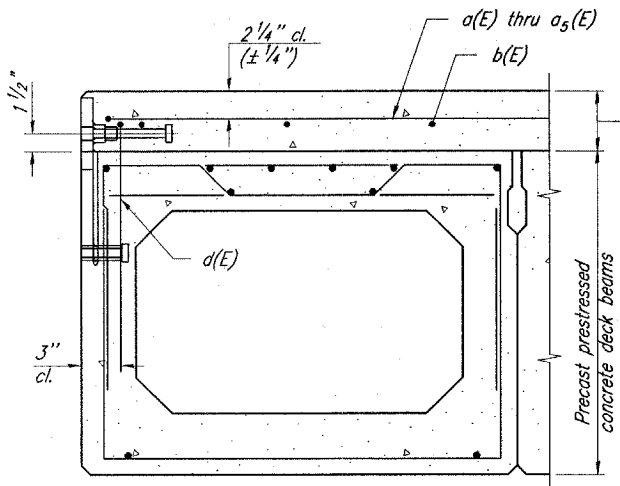
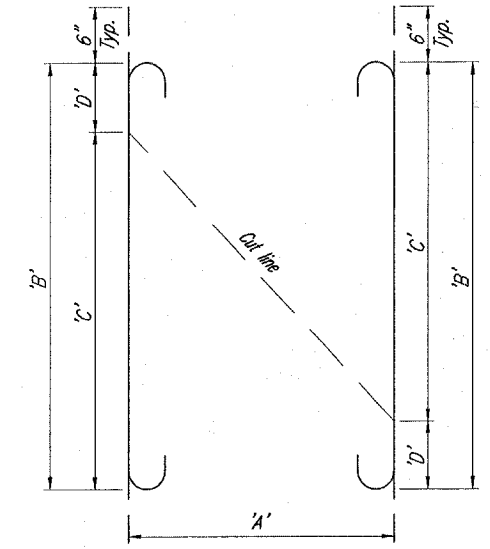
Bar	A'	B'	C'	D'
$a_3(E)$	2	20'-11"	12'-4"	8'-7"
$a_4(E)$	4	15'-11"	13'-7"	2'-4"
$a_5(E)$	4	17'-4"	3'-1"	14'-3"



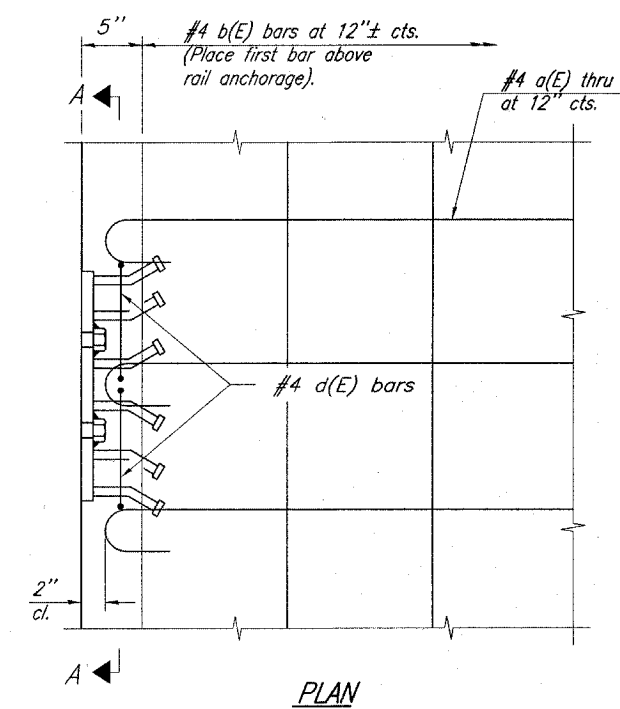
SECTION A-A



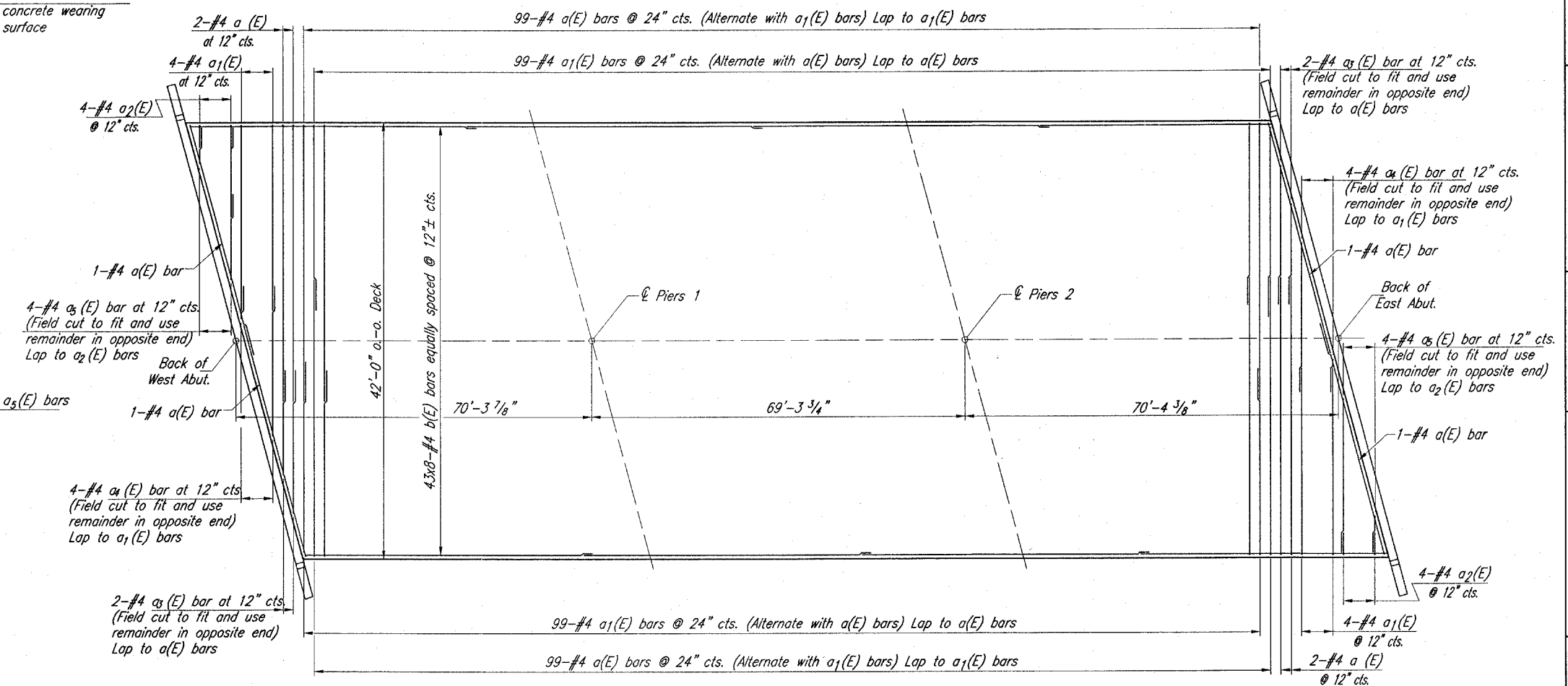
REINFORCED CONCRETE WEARING SURFACE PROFILE



CROSS SECTION

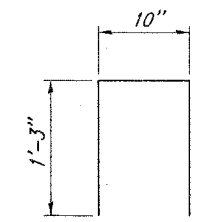


PLAN

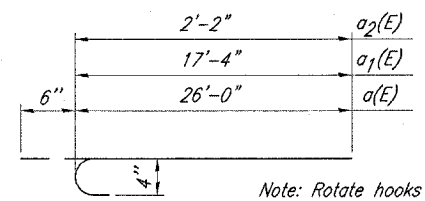


HALF PLAN

**BAR LAPS**  
#4 Bars = 1'-8"



d(E) BAR



a(E), a1(E) & a2(E) BARS

Note: Rotate hooks to maintain clearances.

**BILL OF MATERIAL**

Bar	No.	Size	Length	Shape
a(E)	202	#4	26'-6"	U
a1(E)	206	#4	17'-10"	U
a2(E)	8	#4	2'-8"	U
a3(E)	2	#4	21'-5"	U
a4(E)	4	#4	12'-10"	U
a5(E)	4	#4	9'-1"	U
b(E)	344	#4	27'-6"	—
d(E)	140	#4	3'-4"	□

Bar	No.	Size	Length	Shape
Bridge Deck Grooving			Sq. Yd.	932
Protective Coat			Sq. Yd.	980
Concrete Wearing Surface, 5"			Sq. Yd.	970.0
Reinforcement Bars, Epoxy Coated			Pound	12760

Notes:  
The rail anchorage shall be cast with the beam. Any formwork necessary for field casting the wearing surface may be secured utilizing the bottom rail anchorage inserts and/or additional inserts cast into the beam. Drilling into the beam will not be permitted.  
Bars indicated thus: 20 x 3-#5 etc. indicates 20 lines of bars with 3 lengths per line.

REVISION

DATE

Hanson No.	06P2008	DATE	04/06/07
Filename	RAIL-2.DWG	LAYOUT	TNZ
Scale		DRAWN	RLA
		REVIEWED	JUT
			10/12/06
			10/12/06
			01/16/07

Phone: (309) 691-0902  
Fax: (309) 691-1327  
www.hanson-inc.com  
Offices Nationwide

**HANSON**  
Professional Services Inc.  
2800 W. Willow Knolls Road  
Peoria, Illinois 61614-1129

REINFORCED CONCRETE  
WEARING SURFACE AND  
RAILING CONNECTION DETAILS  
LANCASTER RD. OVER LANARSH CREEK  
STRUCTURE NO. 072-3145  
PEORIA COUNTY, ILLINOIS

APR 05 2007 6:47 PM CML  
L:\06065\06P2008\FINAL PLANS 070406\BRIDGE\RAIL-2.DWG