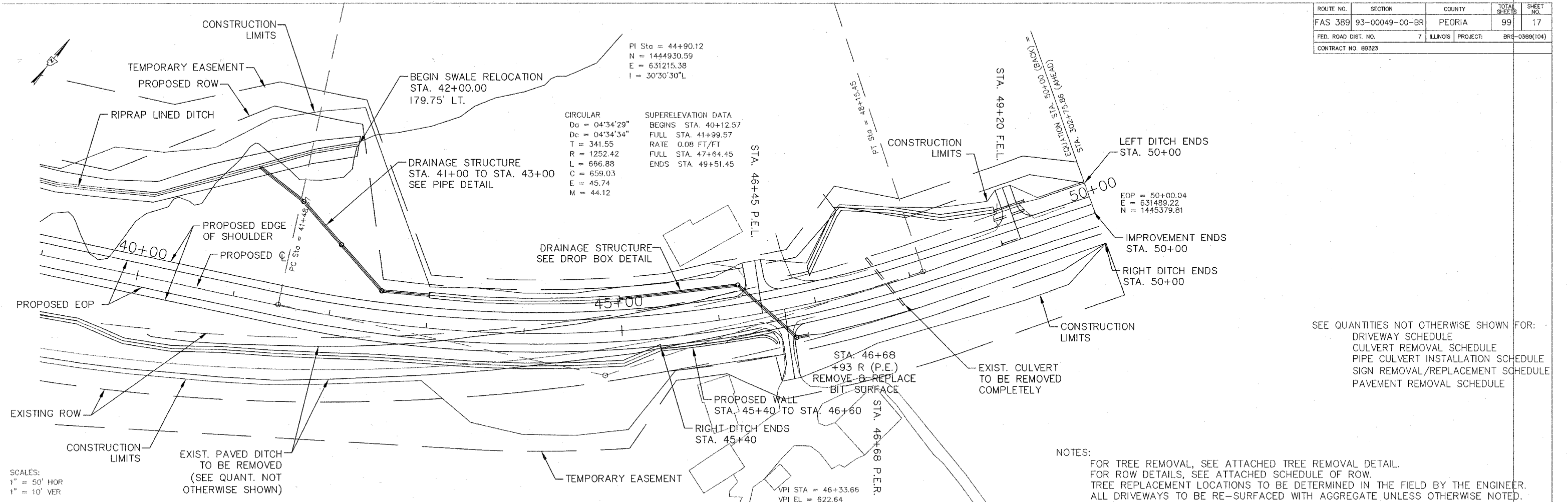


ROUTE NO.	SECTION	COUNTY	TOTAL SHEETS	SHEET NO.
FAS 389	93-00049-00-BR	PEORIA	99	17
FED. ROAD DIST. NO.	7	ILLINOIS	PROJECT:	BRS-0389(104)
CONTRACT NO. 89323				



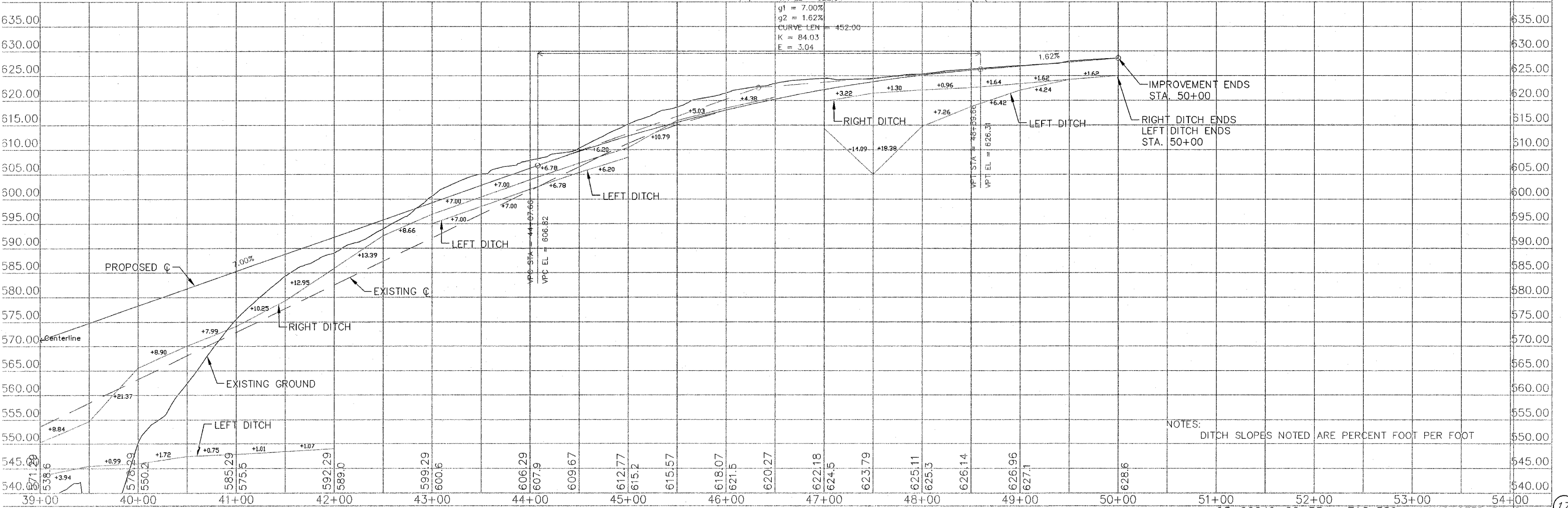
SCALES:  
 1" = 50' HOR  
 1" = 10' VER

CIRCULAR  
 Da = 04'34"29"  
 Dc = 04'34"34"  
 T = 341.55  
 R = 1252.42  
 L = 666.88  
 C = 659.03  
 E = 45.74  
 M = 44.12

SUPERELEVATION DATA  
 BEGINS STA. 40+12.57  
 FULL STA. 41+99.57  
 RATE 0.08 FT/FT  
 FULL STA. 47+64.45  
 ENDS STA. 49+51.45

NOTES:  
 FOR TREE REMOVAL, SEE ATTACHED TREE REMOVAL DETAIL.  
 FOR ROW DETAILS, SEE ATTACHED SCHEDULE OF ROW.  
 TREE REPLACEMENT LOCATIONS TO BE DETERMINED IN THE FIELD BY THE ENGINEER.  
 ALL DRIVEWAYS TO BE RE-SURFACED WITH AGGREGATE UNLESS OTHERWISE NOTED.

SEE QUANTITIES NOT OTHERWISE SHOWN FOR:  
 DRIVEWAY SCHEDULE  
 CULVERT REMOVAL SCHEDULE  
 PIPE CULVERT INSTALLATION SCHEDULE  
 SIGN REMOVAL/REPLACEMENT SCHEDULE  
 PAVEMENT REMOVAL SCHEDULE



NOTES:  
 DITCH SLOPES NOTED ARE PERCENT FOOT PER FOOT