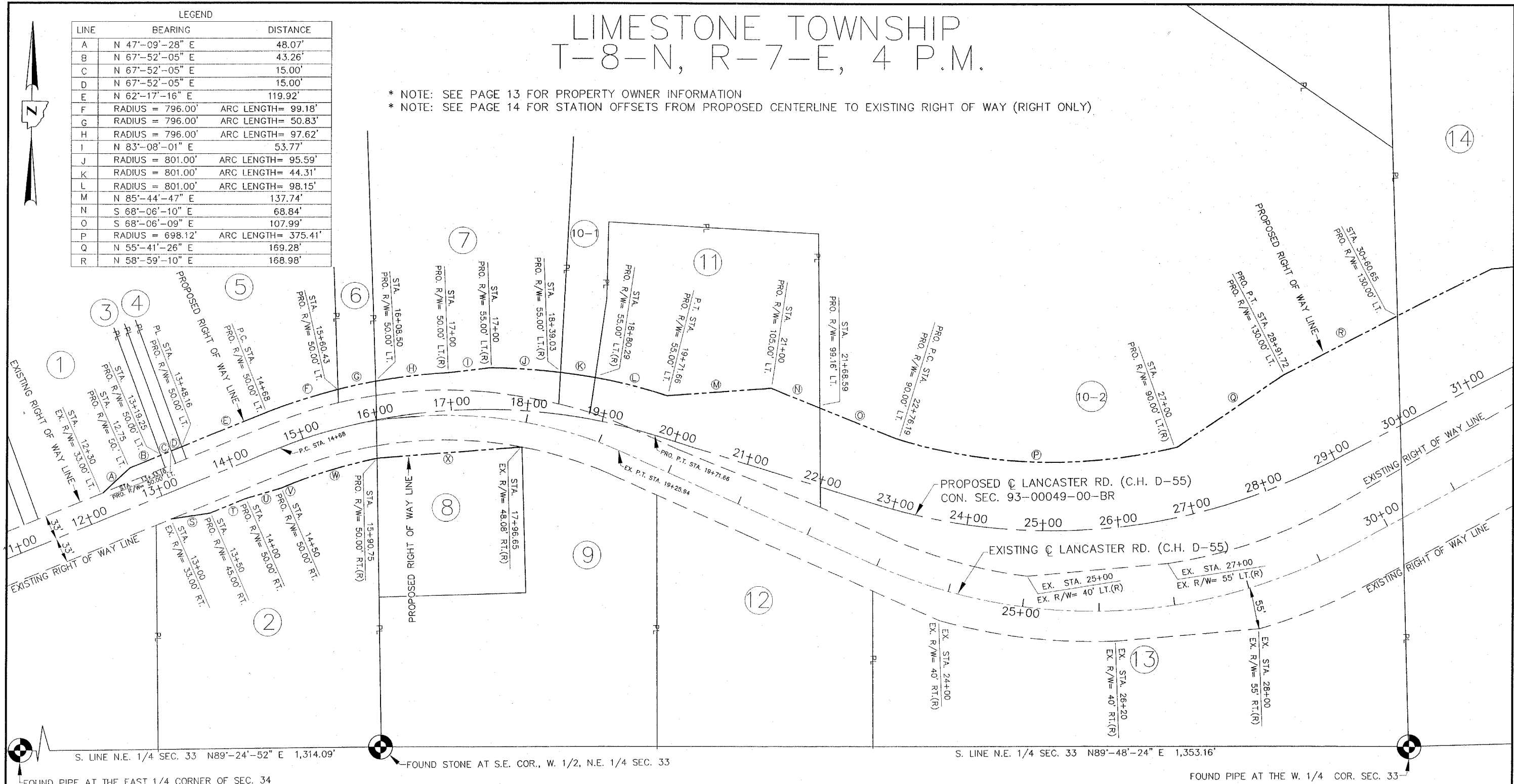


# LIMESTONE TOWNSHIP T-8-N, R-7-E, 4 P.M.

LEGEND

LINE	BEARING	DISTANCE
A	N 47°-09'-28" E	48.07'
B	N 67°-52'-05" E	43.26'
C	N 67°-52'-05" E	15.00'
D	N 67°-52'-05" E	15.00'
E	N 62°-17'-16" E	119.92'
F	RADIUS = 796.00' ARC LENGTH= 99.18'	
G	RADIUS = 796.00' ARC LENGTH= 50.83'	
H	RADIUS = 796.00' ARC LENGTH= 97.62'	
I	N 83°-08'-01" E	53.77'
J	RADIUS = 801.00' ARC LENGTH= 95.59'	
K	RADIUS = 801.00' ARC LENGTH= 44.31'	
L	RADIUS = 801.00' ARC LENGTH= 98.15'	
M	N 85°-44'-47" E	137.74'
N	S 68°-06'-10" E	68.84'
O	S 68°-06'-09" E	107.99'
P	RADIUS = 698.12' ARC LENGTH= 375.41'	
Q	N 55°-41'-26" E	169.28'
R	N 58°-59'-10" E	168.98'

\* NOTE: SEE PAGE 13 FOR PROPERTY OWNER INFORMATION  
 \* NOTE: SEE PAGE 14 FOR STATION OFFSETS FROM PROPOSED CENTERLINE TO EXISTING RIGHT OF WAY (RIGHT ONLY)



S. LINE N.E. 1/4 SEC. 33 N89°-24'-52" E 1,314.09'

FOUND STONE AT S.E. COR., W. 1/2, N.E. 1/4 SEC. 33

S. LINE N.E. 1/4 SEC. 33 N89°-48'-24" E 1,353.16'

FOUND PIPE AT THE W. 1/4 COR. SEC. 33

LEGEND CONTINUED

LINE	BEARING	DISTANCE
S	N 81°-21'-26" E	51.44'
T	N 67°-52'-05" E	49.83'
U	N 73°-35'-55" E	50.08'
V	N 67°-52'-05" E	18.00'
W	RADIUS = 696.00' ARC LENGTH= 113.57'	
X	N 85°-30'-26" E	191.48'

SECTION 33 , TOWNSHIP 8 NORTH , RANGE 7 EAST 4 TH PRINCIPAL MERIDIAN  
 PEORIA COUNTY

## RIGHT OF WAY STRIP MAP

\* NOTE STATION EQUATION  
 EX. STA. 269+78.10 BACK =  
 EX. STA. 18+00 AHEAD

COUNTY HIGHWAY ROUTE D-55 CONSTRUCTION SECTION 93-00049-00-BR

FEBRUARY 20 07

SECTION 93-00049-00-BR LANCASTER ROAD

