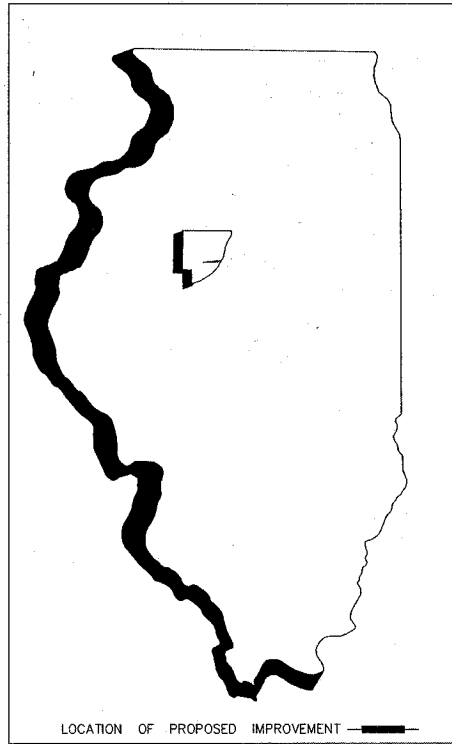


ROUTE NO.	SECTION	COUNTY	TOTAL SHEETS	SHEET NO.
FAS 389	93-00049-00-BR	PEORIA	100	1
FED. ROAD DIST. NO.	7	ILLINOIS PROJECT:	BRS-0389(104)	
CONTRACT NO. 89323				

STATE OF ILLINOIS
 PEORIA COUNTY HIGHWAY DEPARTMENT
 PLANS FOR PROPOSED
 MAJOR BRIDGE FUND CONSTRUCTION
 FEDERAL AID SECONDARY 389
 SECTION 93-00049-00-BR
 FED. RD. DIST. NO. 7 PROJECT BRS-0389(104)
 CONTRACT NO. 89323 JOB NO. C-94-011-04



INDEX OF SHEETS

2	TYPICAL SECTIONS
3	PROPOSED DRIVEWAY TYPICAL SECTIONS
4-7	SUMMARY OF QUANTITIES
8	DETOUR
9	STAGING PLAN
10-14	RIGHT OF WAY STRIP MAP
15-17	PLAN AND PROFILE
18-23	PLAN DETAIL SHEETS
24-31	BRIDGE PLANS
32-37	WATER LINE RELOCATION DETAILS
38-50	SOIL BORINGS
51	SUPERELEVATION DEVELOPMENT
52	FINISHED GRADE ELEVATIONS
53-55	EROSION CONTROL PLAN
56-58	TREE REMOVAL DETAIL
59-60	DROP BOX DETAIL
61	MODULAR RETAINING WALL SYSTEM DETAIL
62-98	CROSS SECTIONS
99	PEORIA COUNTY BENCHMARK
100	SLOPE STEPS DETAILS

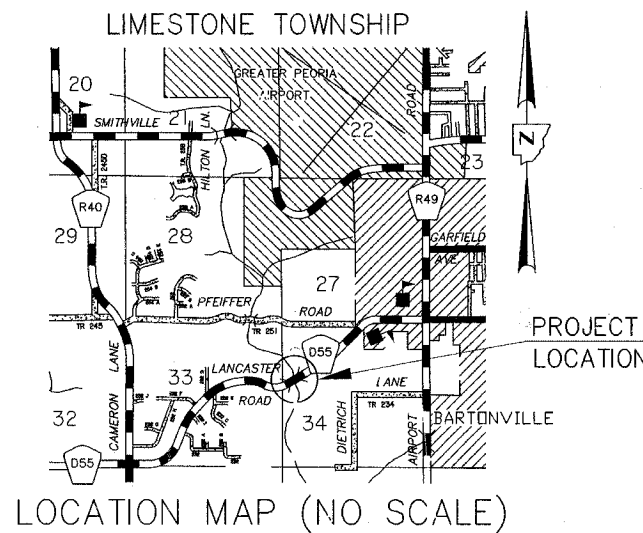
LIST OF STANDARDS

280001-03	TEMPORARY EROSION CONTROL SYSTEMS
285001-01	FABRIC FORMED CONCRETE REVETMENT MATS
482001-01	HMA SHOULDER ADJACENT TO FLEXIBLE PAVEMENT
515001-02	NAME PLATE FOR BRIDGES
542301-01	PRECAST REINFORCED CONCRETE FLARED END SECTION
542401	METAL END SECTION FOR PIPE CULVERTS
602401-01	MANHOLE TYPE A
604001-02	FRAME AND LIDS TYPE I
606101-02	TYPE A GUTTER (INLET, OUTLET & ENTRANCE)
631026-03	TRAFFIC BARRIER TERMINAL TYPE 5 & 5A
635006-02	REFLECTOR AND TERMINAL MARKER PLACEMENT
635011-01	REFLECTOR MARKER AND MOUNTING DETAILS
665001-01	WOVEN WIRE FENCE
666001	RIGHT OF WAY MARKERS
701001-01	OFF-RD OPERATIONS, 2L, 2W, MORE THAN 4.5m (15') AWAY
701006-02	OFF-RD OPERATIONS, 2L, 2W, 4.5m (15') TO 600mm (24") FROM PAVEMENT EDGE
701011-01	OFF-RD MOVING OPERATIONS, 2L, 2W, DAY ONLY
701201-02	LANE CLOSURE, 2L, 2W, DAY ONLY, FOR SPEEDS > 45 MPH
701206-01	LANE CLOSURE, 2L, 2W, NIGHT ONLY, FOR SPEEDS > 45 MPH
701301-02	LANE CLOSURE, 2L, 2W, SHORT TIME OPERATIONS
701306-01	LANE CLOSURE, 2L, 2W, SLOW MOVING OPERATIONS DAY ONLY, FOR SPEEDS > 45 MPH
701326-02	LANE CLOSURE, 2L, 2W, PAVEMENT WIDENING, FOR SPEEDS > 45 MPH
701331-02	LANE CLOSURE, 2L, 2W, WITH RUN-AROUND, FOR SPEEDS > 45 MPH
701336-04	LANE CLOSURE, 2L, 2W, WORK AREAS IN SERIES, FOR SPEEDS > 45 MPH
702001-06	TRAFFIC CONTROL DEVICES
720011	METAL POSTS FOR SIGNS, MARKERS & DELINEATORS
729001	APPLICATIONS OF TYPES A & B METAL POSTS (FOR SIGNS & MARKERS)
780001-01	TYPICAL PAVEMENT MARKINGS
BLR 21-6	TYPICAL APPLICATION OF TRAFFIC CONTROL DEVICES FOR CONSTRUCTION ON RURAL LOCAL HIGHWAYS
BLR 22-4	TYPICAL APPLICATION OF TRAFFIC CONTROL DEVICES FOR CONSTRUCTION ON RURAL LOCAL HIGHWAYS
BLR 23-1	TRAFFIC BARRIER TERMINAL TYPE I

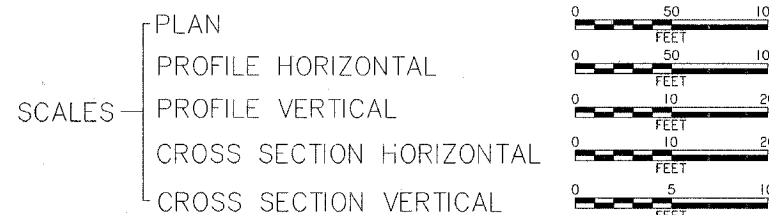
DISTRICT STANDARDS (SEE SPECIAL PROVISIONS):

SLOPE BENCHING DETAIL
 205001-04

THESE PLANS WERE PREPARED BY A FULL TIME MEMBER OF MY STAFF UNDER MY PERSONAL SUPERVISION.



OLD SN: 072-3060 - 3 SPAN CONCRETE BRIDGE ON I-BEAMS, 115' LONG
 NEW SN: 072-3145 - 3 SPAN 33" PPC DECK BEAM BRIDGE, 210' LONG



TOTAL AND NET LENGTH OF PROJECT: 3750 FEET (0.71 mi.)
 FUNCTIONAL CLASSIFICATION: MAJOR COLLECTOR (RURAL)
 CURRENT ADT: 4750 DESIGN GUIDELINES: RURAL
 VARIANCES GRANTED: SUPER DISTRIBUTION BETWEEN TANGENT & CURVE
 COMMITMENTS: NONE

J.U.L.I.E.: 1-800-892-0123

AGENCY RESPONSIBLE FOR LETTING	
APPROVED	<u>April 5</u> 20 <u>07</u> COUNTY ENGINEER
PASSED	<u>April 16</u> 20 <u>07</u> DISTRICT 4 ENGINEER OF LOCAL ROADS & STREETS
RELEASING FOR BID BASED ON LIMITED REVIEW	<u>April 16</u> 20 <u>07</u> DEPUTY DIRECTOR OF HIGHWAYS, REGION 3 ENGINEER

PEORIA COUNTY ENGINEER

April 5, 2007
 DATE

EXPIRES 11/30/07