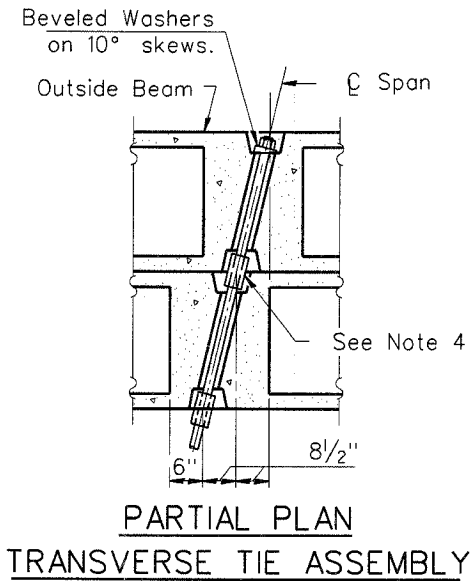
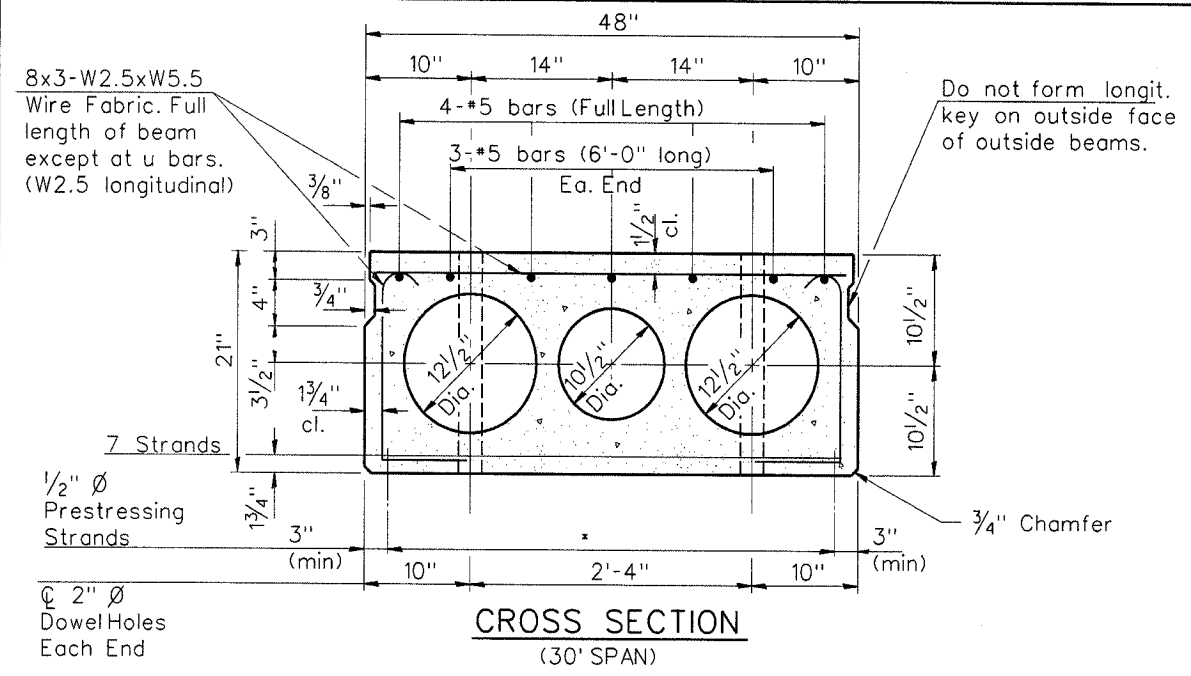


FAS RTE	SECTION	COUNTY	TOTAL SHEETS	SHEET NO.
238	01-00130-00-BR	HENRY	14	8
F.W.W.A. REG.		ILLINOIS PROJECT		



NOTES

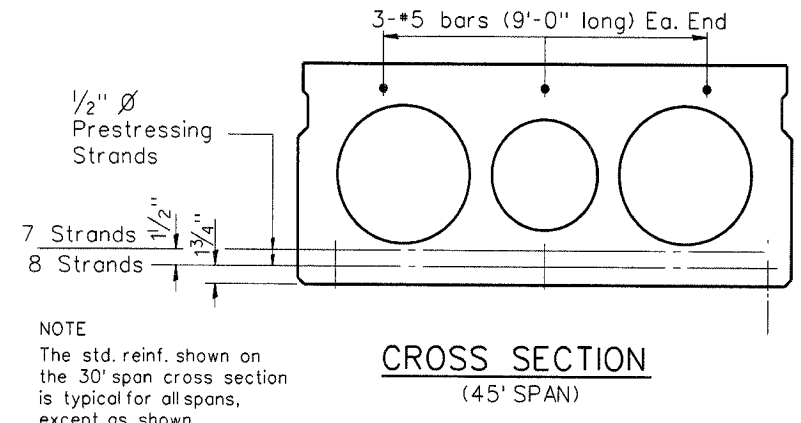
1. Prestressing steel shall be uncoated high strength, low relaxation 7-wire strand, Grade 270.
2. The nominal diameter shall be 1/2" and the nominal cross-sectional area shall be 0.153 square inches.
3. Reinforcement bars shall conform to AASHTO M-31 or M-322, Grade 60.
4. On 0°, 5° and 10° skew, alternate approved transverse tie rods of increased segmental length are acceptable.
5. Rail Post anchor devices shall be cast into outside beam as elsewhere specified.
6. When Waterproofing Membrane System is specified, the top surface of the beams shall be screeded with a straightedge and finished with a hand float. The finished surfaces shall be free of depressions or high spots with sharp corners and the top edge of key shall be rounded or chamfered a minimum of 1/4".
7. Keyway surfaces shall be cleaned to remove form oil or other bond breaking material prior to shipment of the beams. Cleaning shall be done by sandblasting the keyway areas between the top of the beam and the bottom edge of the key.

*** TRANSVERSE STRAND PLACEMENT GUIDELINES**

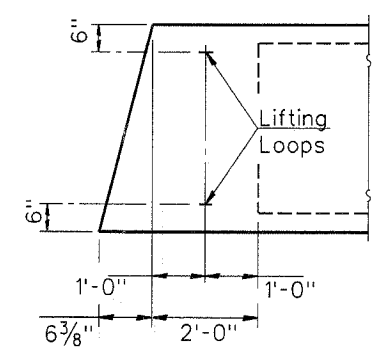
1. Place strands symmetrically about centerline of beam
 2. The minimum distance from center to center of strands in all directions shall be 2".
 3. The minimum clearance from strand to dowel hole shall be 1/2"
 4. The minimum clearance from strand to void shall be 1/2"
- Vertical placement of strands shall not be adjusted to satisfy the above guidelines.

DESIGN STRESSES

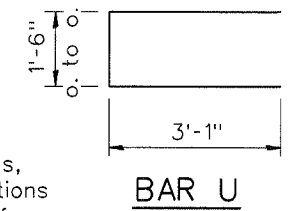
- $f'_c = 5,000$ p.s.i.
- $f'_ci = 4,000$ p.s.i.
- $f'_s = 270,000$ p.s.i. (1/2" Ø Strand)
- $f_{si} = 201,960$ p.s.i. (1/2" Ø Strand)
- $f_y = 60,000$ p.s.i.



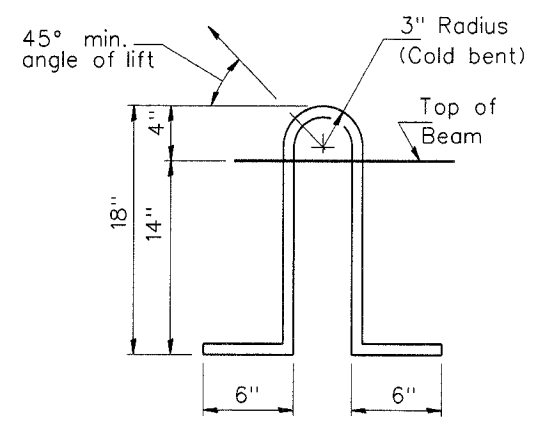
NOTE
The std. reinf. shown on the 30' span cross section is typical for all spans, except as shown.



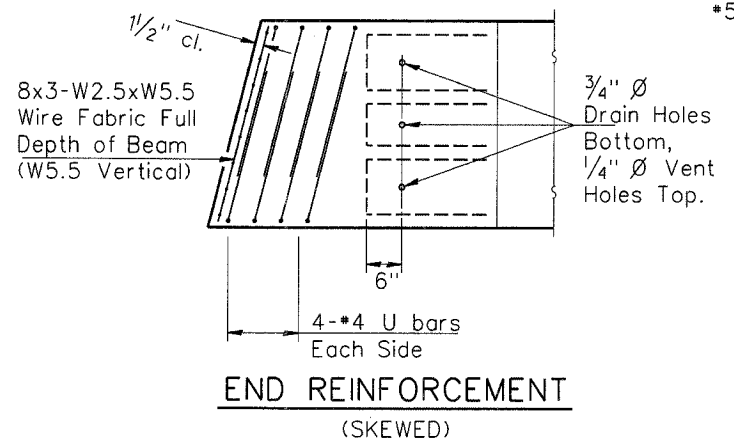
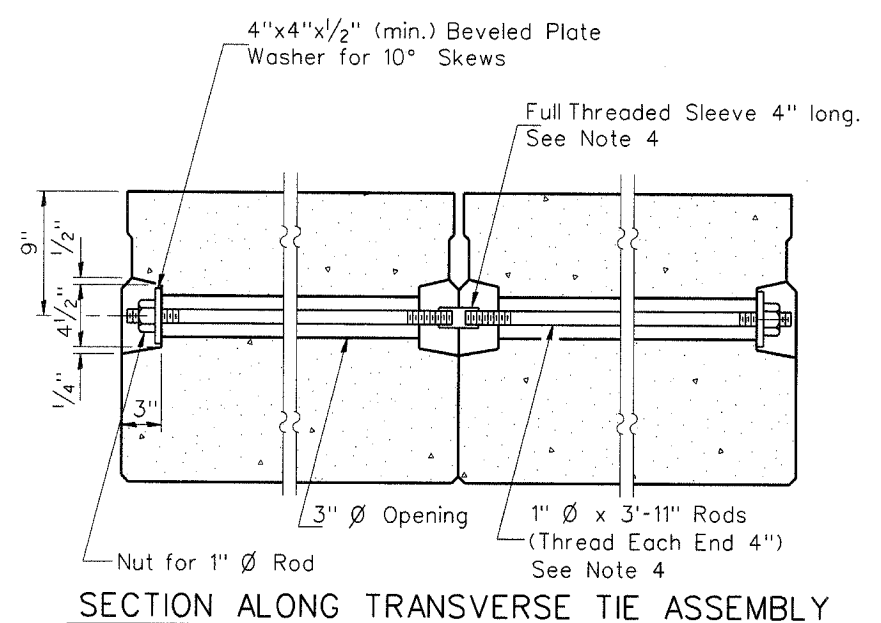
Each beam shall have four Lifting Loops, two at each end of beam cast in locations shown above. Loops shall be burned off after beams have been erected.



MIN. BAR LAP
*5 bars = 1'-8"



Lifting loops shall be 2, 1/2" Ø-270 ksi strands, as shown. Alternate approved lifting devices are also acceptable.



P.P.C. DECK BEAM DETAILS	
28' ROADWAY	21" x 48" BEAMS

PROJECT TITLE: HENRY COUNTY BRIDGE

SECTION 01-00130-00-BR (FAS 1232)

SHEET TITLE: P.C.C. DECK BEAM DETAILS

SHEET NO. 8

DATE: 03.01.07

SHEET 7

OF 13 SHEETS

Sodemann and Associates, Inc.
3401 NORTH NEL STREET
CHAMPAGNE, ILLINOIS 61824-0557
TEL 217 352-7688 FAX 217 352-7922
ENGINEERING / ANALYSIS / MANAGEMENT