

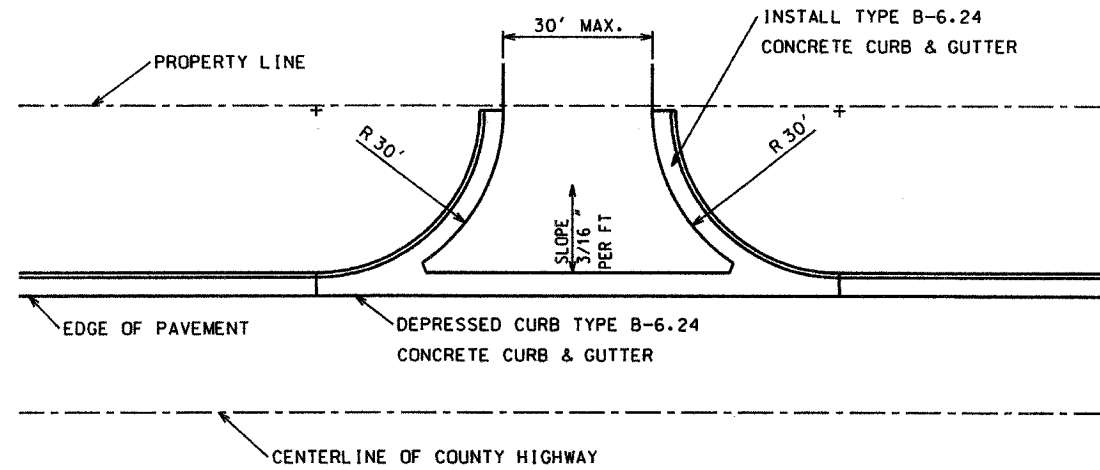
COUNTY OF WILL  
COMMERCIAL ENTRANCE

PERMIT: EXXXX

NOTE: ALL CONSTRUCTION TO BE DONE ACCORDING TO STATE OF ILLINOIS "STANDARD SPECIFICATIONS FOR ROAD AND BRIDGE CONSTRUCTION"

ALL GROUND AREAS DISTURBED SHALL BE RESEDED AND MULCHED OR JUTE MATTED AS SOON AFTER CONSTRUCTION AS POSSIBLE

CUT OUT DIRT ON SHOULDER AND INSTALL 15" AGGREGATE BASE COURSE 2" BITUMINOUS BINDER COURSE AND 2" BITUMINOUS SURFACE COURSE



COUNTY OF WILL  
PRIVATE ENTRANCE

PERMIT: XXXXX

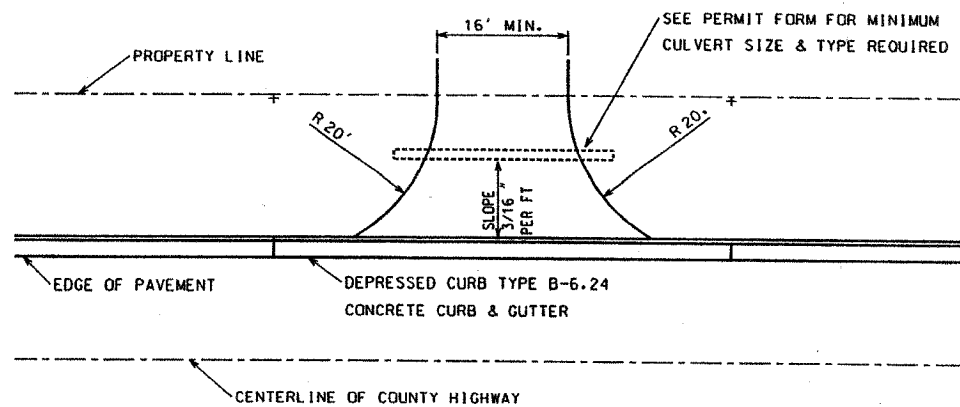
NOTE: ALL CONSTRUCTION TO BE DONE ACCORDING TO STATE OF ILLINOIS "STANDARD SPECIFICATIONS FOR ROAD AND BRIDGE CONSTRUCTION"

ALL GROUND AREAS DISTURBED SHALL BE RESEDED AND MULCHED OR JUTE MATTED AS SOON AFTER CONSTRUCTION AS POSSIBLE

CUT OUT DIRT ON SHOULDER AND INSTALL 4" AGGREGATE BASE COURSE AND 8" PORTLAND CEMENT CONCRETE

OR

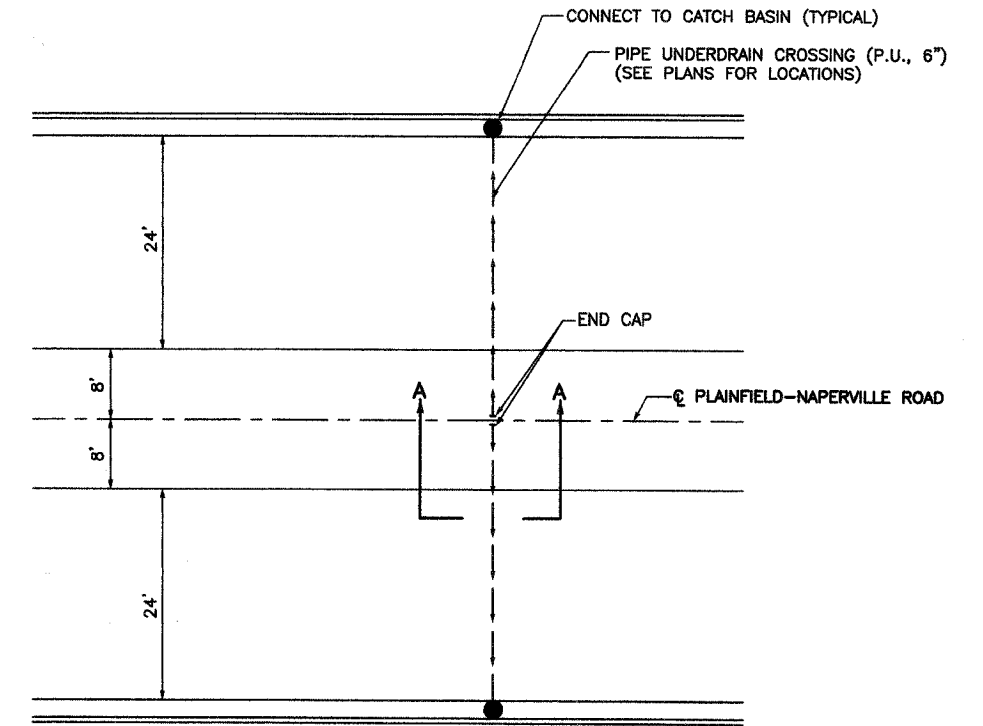
CUT OUT DIRT ON SHOULDER AND INSTALL 12" AGGREGATE BASE COURSE AND 2 1/2" BITUMINOUS SURFACE COURSE



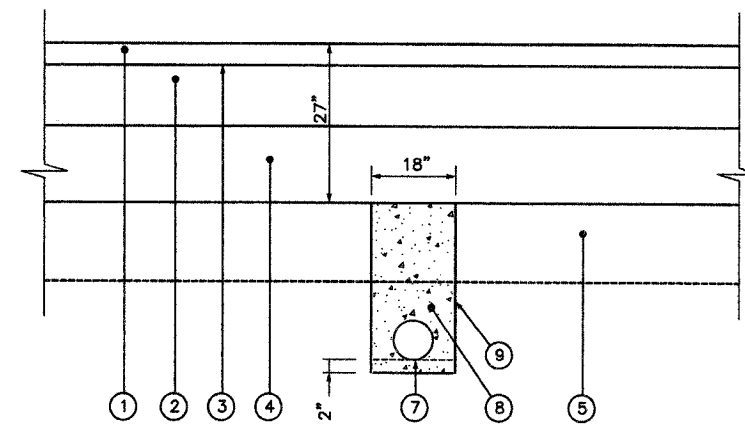
ROUTE NO.	SECTION	COUNTY	TOTAL SHEETS	SHEET NO.
FAU 2545	*	WILL	147	103

\* 98-00036-19-FP CONTRACT NO. 83896

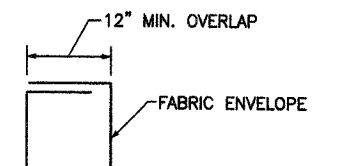
PLAINFIELD-NAPERVILLE RD PIPE UNDERDRAIN DETAIL



PLAN



SECTION A-A  
PIPE UNDERDRAIN CROSSING



FABRIC 18" ENVELOPE DETAIL

LEGEND

- ① BITUMINOUS CONCRETE SURFACE COURSE, 2"
- ② BITUMINOUS CONCRETE BINDER COURSE, 13"
- ③ BITUMINOUS MATERIALS (PRIME COAT)
- ④ AGGREGATE SUBGRADE, 12"
- ⑤ POROUS GRANULAR EMBANKMENT SUBGRADE (DEPTH VARIES) (AT LOCATIONS SHOWN IN CROSS SECTIONS)
- ⑦ PIPE UNDERDRAIN, 6"
- ⑧ FA1 OR FA2 BACKFILL
- ⑨ FABRIC ENVELOPE

NO.	DATE	REVISION	BY

WILL COUNTY DEPARTMENT OF HIGHWAYS  
PLAINFIELD-NAPERVILLE ROAD (C.H. 14)  
ROADWAY RECONSTRUCTION  
DRIVEWAY AND PIPE UNDERDRAIN DETAILS

**McDonough Associates Inc.**  
Engineers/Architects

DESIGNED BY: NKU  
CHECKED BY: NJL  
DRAWN BY: JTF

SCALE:  
NTS

DRAWING ID: G:\20030023 - Plainfield-Naperville Road\dwg\DRV PUD DET.dwg  
PLOT DATE: 07/08/05 - 14:59