

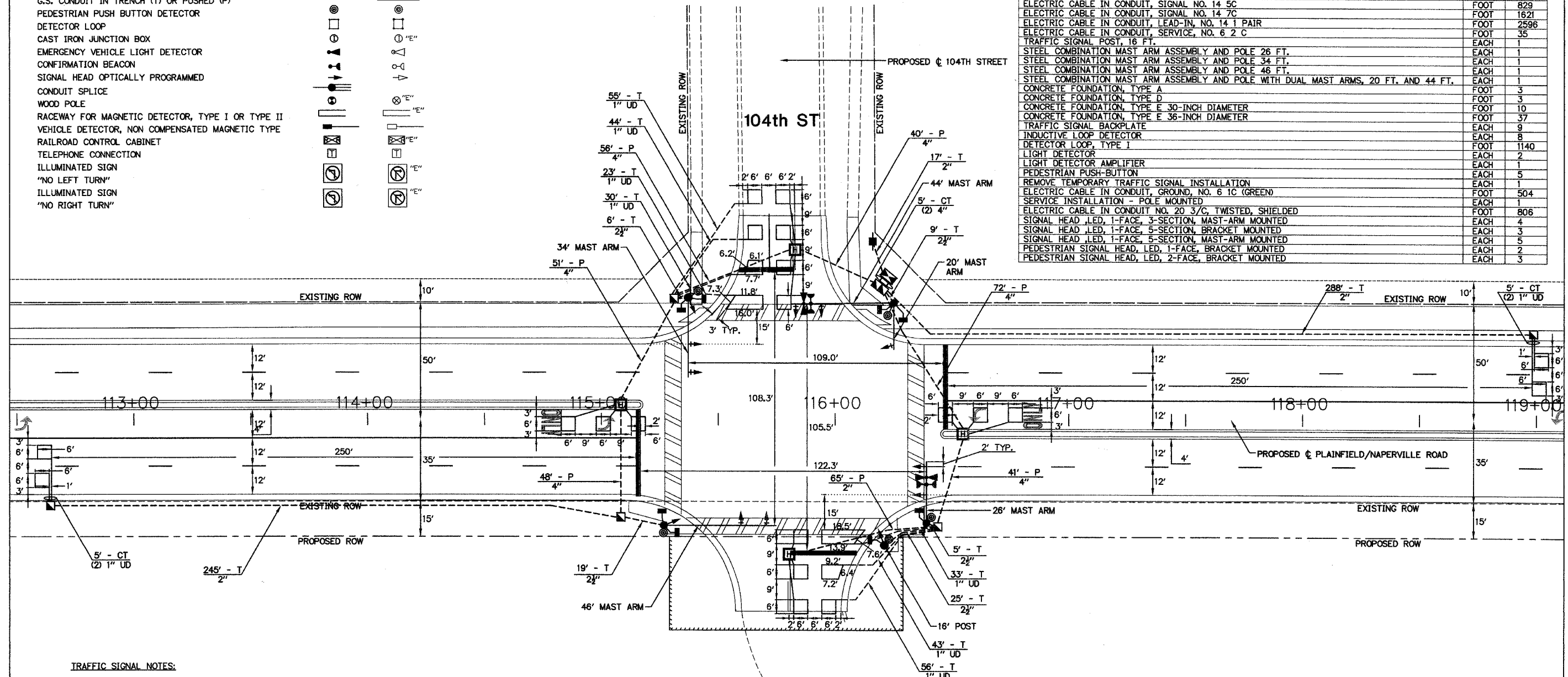
**TRAFFIC SIGNAL LEGEND**

	PROPOSED	EXISTING
CONTROLLER	[Symbol]	[Symbol]
SERVICE INSTALLATION	[Symbol]	[Symbol]
SIGNAL HEAD	[Symbol]	[Symbol]
SIGNAL HEAD WITH BACKPLATE	[Symbol]	[Symbol]
SIGNAL HEAD, PEDESTRIAN	[Symbol]	[Symbol]
SIGNAL POST	[Symbol]	[Symbol]
MAST ARM ASSEMBLY AND POLE, STEEL	[Symbol]	[Symbol]
MAST ARM ASSEMBLY AND POLE, ALUMINUM	[Symbol]	[Symbol]
COMBINATION MAST ARM ASSEMBLY AND POLE, STEEL WITH LUMINAIRE	[Symbol]	[Symbol]
UNIT DUCT	[Symbol]	[Symbol]
COMMON TRENCH	[Symbol]	[Symbol]
HANDHOLE	[Symbol]	[Symbol]
HEAVY DUTY HANDHOLE	[Symbol]	[Symbol]
DOUBLE HANDHOLE	[Symbol]	[Symbol]
G.S. CONDUIT IN TRENCH (T) OR PUSHED (P)	[Symbol]	[Symbol]
PEDESTRIAN PUSH BUTTON DETECTOR	[Symbol]	[Symbol]
DETECTOR LOOP	[Symbol]	[Symbol]
CAST IRON JUNCTION BOX	[Symbol]	[Symbol]
EMERGENCY VEHICLE LIGHT DETECTOR	[Symbol]	[Symbol]
CONFIRMATION BEACON	[Symbol]	[Symbol]
SIGNAL HEAD OPTICALLY PROGRAMMED	[Symbol]	[Symbol]
CONDUIT SPLICE	[Symbol]	[Symbol]
WOOD POLE	[Symbol]	[Symbol]
RACEWAY FOR MAGNETIC DETECTOR, TYPE I OR TYPE II	[Symbol]	[Symbol]
VEHICLE DETECTOR, NON COMPENSATED MAGNETIC TYPE	[Symbol]	[Symbol]
RAILROAD CONTROL CABINET	[Symbol]	[Symbol]
TELEPHONE CONNECTION	[Symbol]	[Symbol]
ILLUMINATED SIGN	[Symbol]	[Symbol]
"NO LEFT TURN"	[Symbol]	[Symbol]
ILLUMINATED SIGN	[Symbol]	[Symbol]
"NO RIGHT TURN"	[Symbol]	[Symbol]

ROUTE NO.	SECTION	COUNTY	TOTAL SHEETS	SHEET NO.
FAU 2545	*	WILL	147	99
FEDERAL DIST. NO. 7		LAUREL	FEL. AND PROJECT	
* 98-00036-19-FP CONTRACT NO. 83896				

**PAY ITEM**

PAY ITEM	UNIT	QUANTITY
CONDUIT IN TRENCH, 2" DIA., GALVANIZED STEEL	FOOT	550
CONDUIT IN TRENCH, 2 1/2" DIA., GALVANIZED STEEL	FOOT	64
CONDUIT IN TRENCH, 4" DIA., GALVANIZED STEEL	FOOT	10
CONDUIT PUSHED, 2" DIA., GALVANIZED STEEL	FOOT	65
CONDUIT PUSHED, 4" DIA., GALVANIZED STEEL	FOOT	308
HANDHOLE	EACH	5
HEAVY-DUTY HANDHOLE	EACH	4
DOUBLE HANDHOLE	EACH	1
TRENCH AND BACKFILL FOR ELECTRICAL WORK	FOOT	619
MAINTENANCE OF TEMPORARY TRAFFIC SIGNAL INSTALLATION	EACH	1
FULL-ACTUATED CONTROLLER AND TYPE IV CABINET	EACH	1
ELECTRIC CABLE IN CONDUIT, SIGNAL NO. 14 2C	FOOT	806
ELECTRIC CABLE IN CONDUIT, SIGNAL NO. 14 3C	FOOT	1640
ELECTRIC CABLE IN CONDUIT, SIGNAL NO. 14 5C	FOOT	829
ELECTRIC CABLE IN CONDUIT, SIGNAL NO. 14 7C	FOOT	1621
ELECTRIC CABLE IN CONDUIT, LEAD-IN, NO. 14 1 PAIR	FOOT	2596
ELECTRIC CABLE IN CONDUIT, SERVICE, NO. 6 2 C	FOOT	35
TRAFFIC SIGNAL POST, 16 FT.	EACH	1
STEEL COMBINATION MAST ARM ASSEMBLY AND POLE 26 FT.	EACH	1
STEEL COMBINATION MAST ARM ASSEMBLY AND POLE 34 FT.	EACH	1
STEEL COMBINATION MAST ARM ASSEMBLY AND POLE 46 FT.	EACH	1
STEEL COMBINATION MAST ARM ASSEMBLY AND POLE WITH DUAL MAST ARMS, 20 FT. AND 44 FT.	EACH	1
CONCRETE FOUNDATION, TYPE A	FOOT	3
CONCRETE FOUNDATION, TYPE D	FOOT	3
CONCRETE FOUNDATION, TYPE E 30-INCH DIAMETER	FOOT	10
CONCRETE FOUNDATION, TYPE E 36-INCH DIAMETER	FOOT	37
TRAFFIC SIGNAL BACKPLATE	EACH	9
INDUCTIVE LOOP DETECTOR	EACH	8
DETECTOR LOOP, TYPE I	FOOT	1140
LIGHT DETECTOR	EACH	2
LIGHT DETECTOR AMPLIFIER	EACH	2
PEDESTRIAN PUSH-BUTTON	EACH	1
REMOVE TEMPORARY TRAFFIC SIGNAL INSTALLATION	EACH	5
ELECTRIC CABLE IN CONDUIT, GROUND, NO. 6 1C (GREEN)	FOOT	1
SERVICE INSTALLATION - POLE MOUNTED	EACH	1
ELECTRIC CABLE IN CONDUIT NO. 20 3/C, TWISTED, SHIELDED	FOOT	806
SIGNAL HEAD, LED, 1-FACE, 3-SECTION, MAST-ARM MOUNTED	EACH	4
SIGNAL HEAD, LED, 1-FACE, 5-SECTION, BRACKET MOUNTED	EACH	3
SIGNAL HEAD, LED, 1-FACE, 5-SECTION, MAST-ARM MOUNTED	EACH	5
PEDESTRIAN SIGNAL HEAD, LED, 1-FACE, BRACKET MOUNTED	EACH	2
PEDESTRIAN SIGNAL HEAD, LED, 2-FACE, BRACKET MOUNTED	EACH	3



**NAPERVILLE PUBLIC WORKS ENTRANCE**

- TRAFFIC SIGNAL NOTES:**
- THE EXISTING STREET NAME SIGNS SHALL BE REMOVED FROM THE EXISTING TEMPORARY TRAFFIC SIGNAL INSTALLATION AND RELOCATED TO THE PROPOSED TRAFFIC SIGNAL EQUIPMENT. THE REMOVAL AND REPLACEMENT SHALL NOT OCCUR UNTIL AFTER THE NEW SIGNAL INSTALLATION IS IN OPERATION. ALL COSTS ASSOCIATED WITH THIS WORK SHALL BE CONSIDERED INCIDENTAL TO THE CONTRACT.

<b>WILL COUNTY DEPARTMENT OF HIGHWAYS</b>			
PLAINFIELD-NAPERVILLE ROAD (C.H. 14) PROPOSED TRAFFIC SIGNAL PLAN 104TH STREET			
McDonough Associates Inc. Engineers/Architects		DESIGNED BY: MJT CHECKED BY: NKU DRAWN BY: MJT	SCALE: 1" = 20'
NO.	DATE	REVISION	BY

P4  
 DRAWING ID: C:\20030023 - Plainfield-Naperville Road\dwg\TS 104th.dwg  
 PLOT DATE: 07/08/05 - 13:04