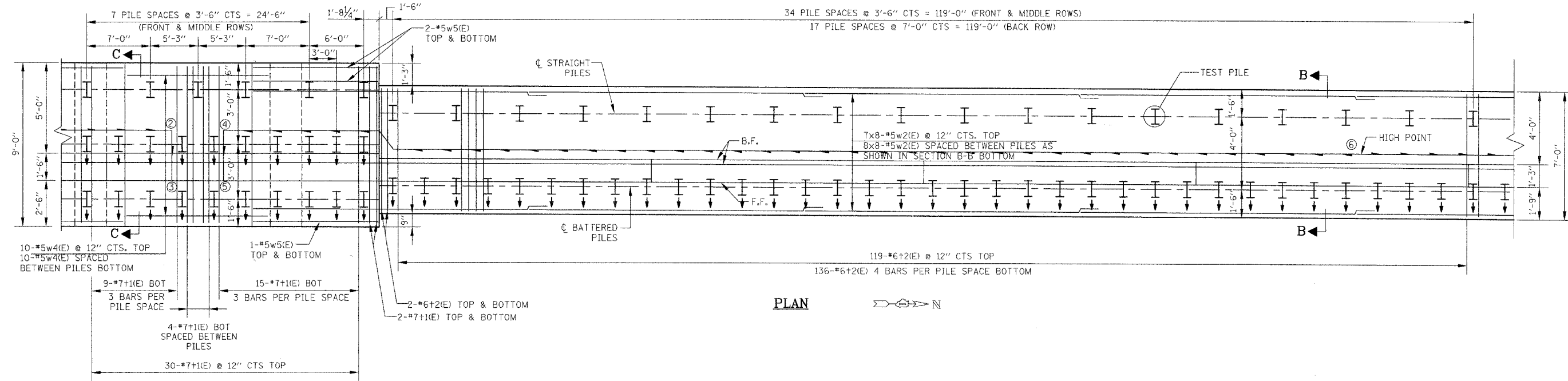
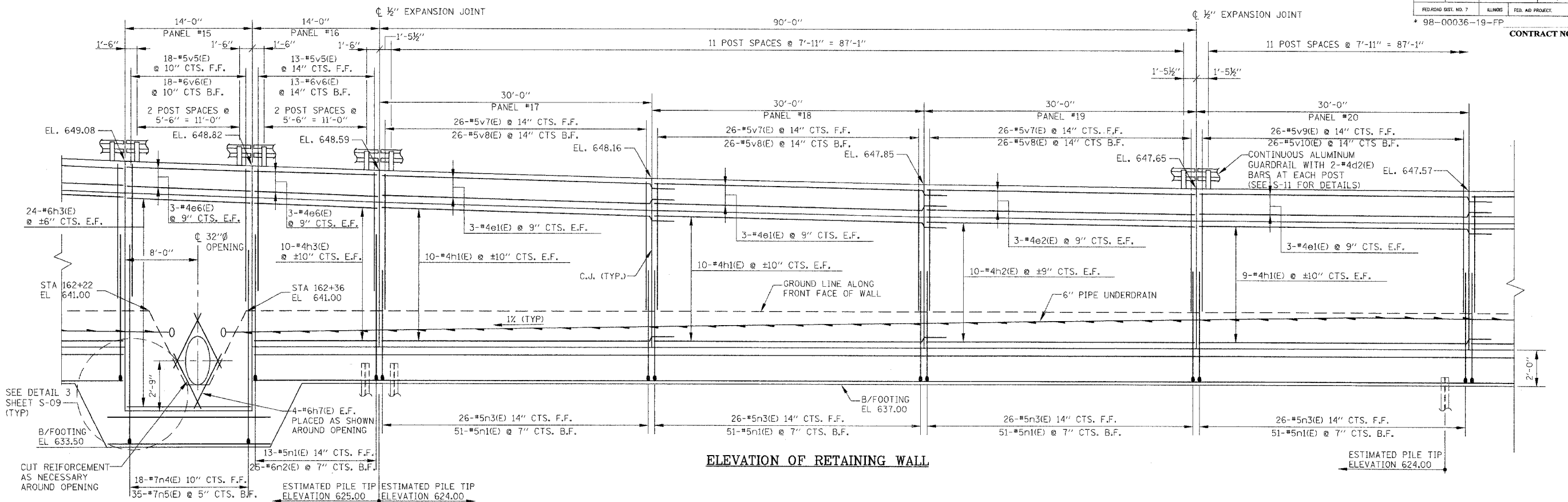


ROUTE NO. FAU 2545	SECTION *	COUNTY WILL	TOTAL SHEETS 147	SHEET NO. 85
FEDERAL DIST. NO. 7		ALMOST	FED. AID PROJECT	
* 98-00036-19-FP				

CONTRACT NO. 83896



PIPE UNDERDRAIN DATA

② STATION 162+27.19 OFFSET 32.25 RT INVERT 639.50	④ STATION 162+32.85 OFFSET 32.25 RT INVERT 639.50	⑥ STATION 163+58.27 OFFSET 33.25 RT INVERT 640.75
③ STATION 162+27.19 OFFSET 35.00 RT INVERT 639.25	⑤ STATION 162+32.85 OFFSET 35.00 RT INVERT 639.25	

NOTES:

- FOR RETAINING WALL TYPICAL CROSS SECTIONS, SEE SHEET S-09.
- PILE TIP ELEVATIONS WILL VARY ALONG WALL. PILE LENGTHS SHOWN HAVE BEEN GROUPED BASED UPON COMMON TOP OF ROCK ELEVATIONS. PILES MAY NEED TO BE CUT TO OBTAIN CORRECT TOP OF PILE ELEVATION (INCLUDED WITH DRIVING STEEL PILES).

LEGEND

F.F.	FRONT FACE OF WALL	I	VERTICAL PILE
B.F.	BACK FACE OF WALL	I	BATTERED PILE
R.O.W.	RIGHT OF WAY		

NO.	DATE	REVISION	BY

WILL COUNTY DEPARTMENT OF HIGHWAYS

PLAINFIELD-NAPERVILLE ROAD (C.H. 14)
ROADWAY RECONSTRUCTION
RETAINING WALL
PLAN AND ELEVATION

McDonough Associates Inc.
Engineers/Architects

DESIGNED BY: JCE
CHECKED BY: AWW
DRAWN BY: JCE

SCALE:
N.T.S.

DRAWING ID: H:\03023\STRUCT\1-S7 PLAN AND ELEVATION.DWG
PLOT DATE: 12/21/06 BY: jehhort