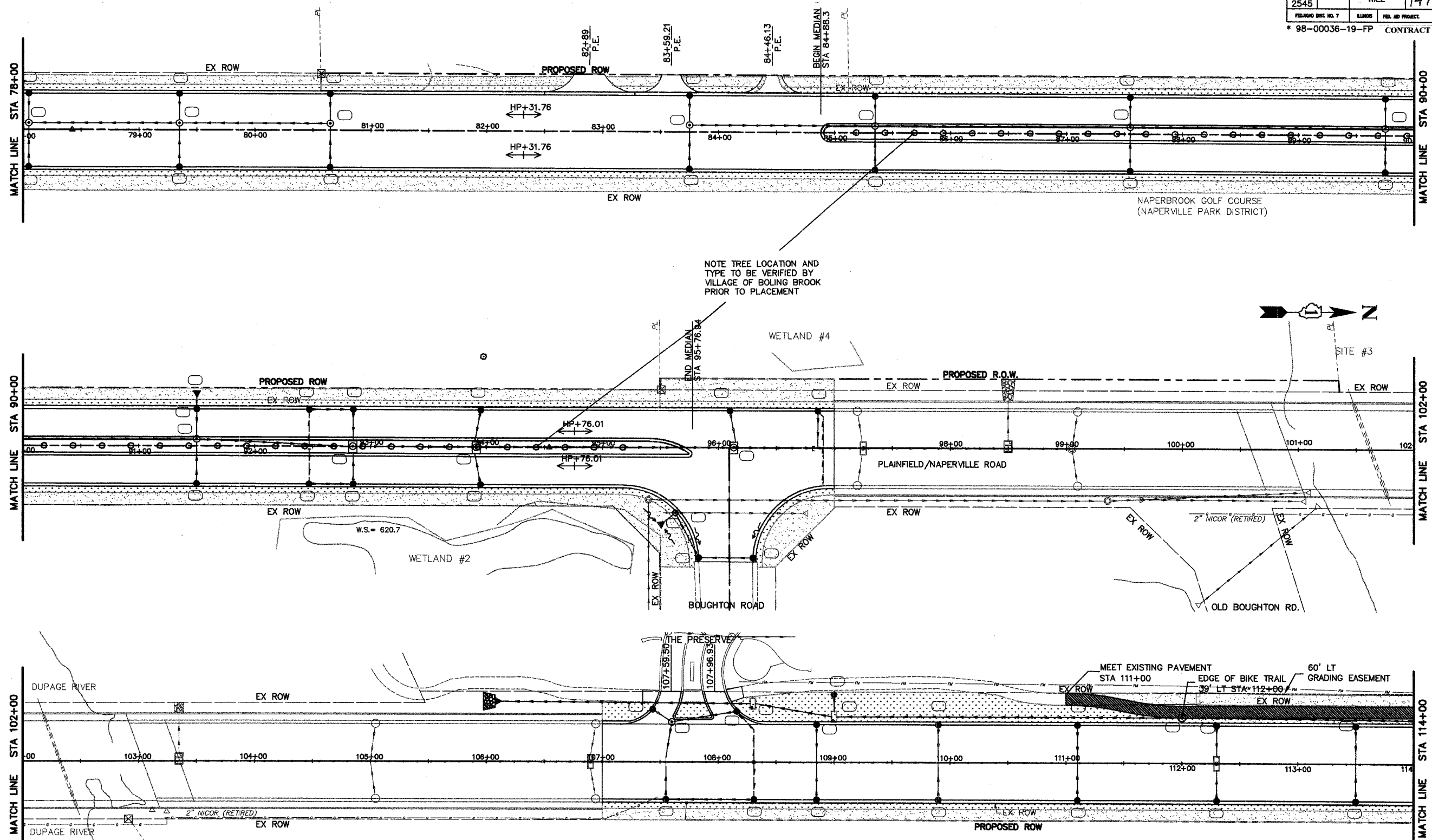


ROUTE NO.	SECTION	COUNTY	TOTAL SHEETS	SHEET NO.
FAU 2545	*	WILL	147	73
FEDERAL AID PROJECT NO. 7		ILLINOIS	FED. AID PROJECT	
* 98-00036-19-FP CONTRACT NO. 83896				



NOTE TREE LOCATION AND TYPE TO BE VERIFIED BY VILLAGE OF BOLING BROOK PRIOR TO PLACEMENT



LEGEND

- SODDING SALT TOLERANT
- SEEDING CLASS 2A & EROSION CONTROL BLANKET
- STONE RIPRAP CLASS A5
- INLET & PIPE PROTECTION
- SEEDING CLASS 4A & EROSION CONTROL BLANKET

NO.	DATE	REVISION	BY

WILL COUNTY DEPARTMENT OF HIGHWAYS
 PLAINFIELD-NAPERVILLE ROAD (C.H. 14)
 ROADWAY RECONSTRUCTION
 LANDSCAPING AND EROSION CONTROL PLAN
 STA 78+00 TO STA 114+00

McDonough Associates Inc.
 Engineers/Architects

DESIGNED BY: JTF
 CHECKED BY: NJL
 DRAWN BY: JTF

SCALE:
 1" = 40'

P2
 DRAWING ID: G:\20030023 - Plainfield-Naperville Road\dwg\LS1-4.dwg
 PLOT DATE: 06/16/05 - 10:44