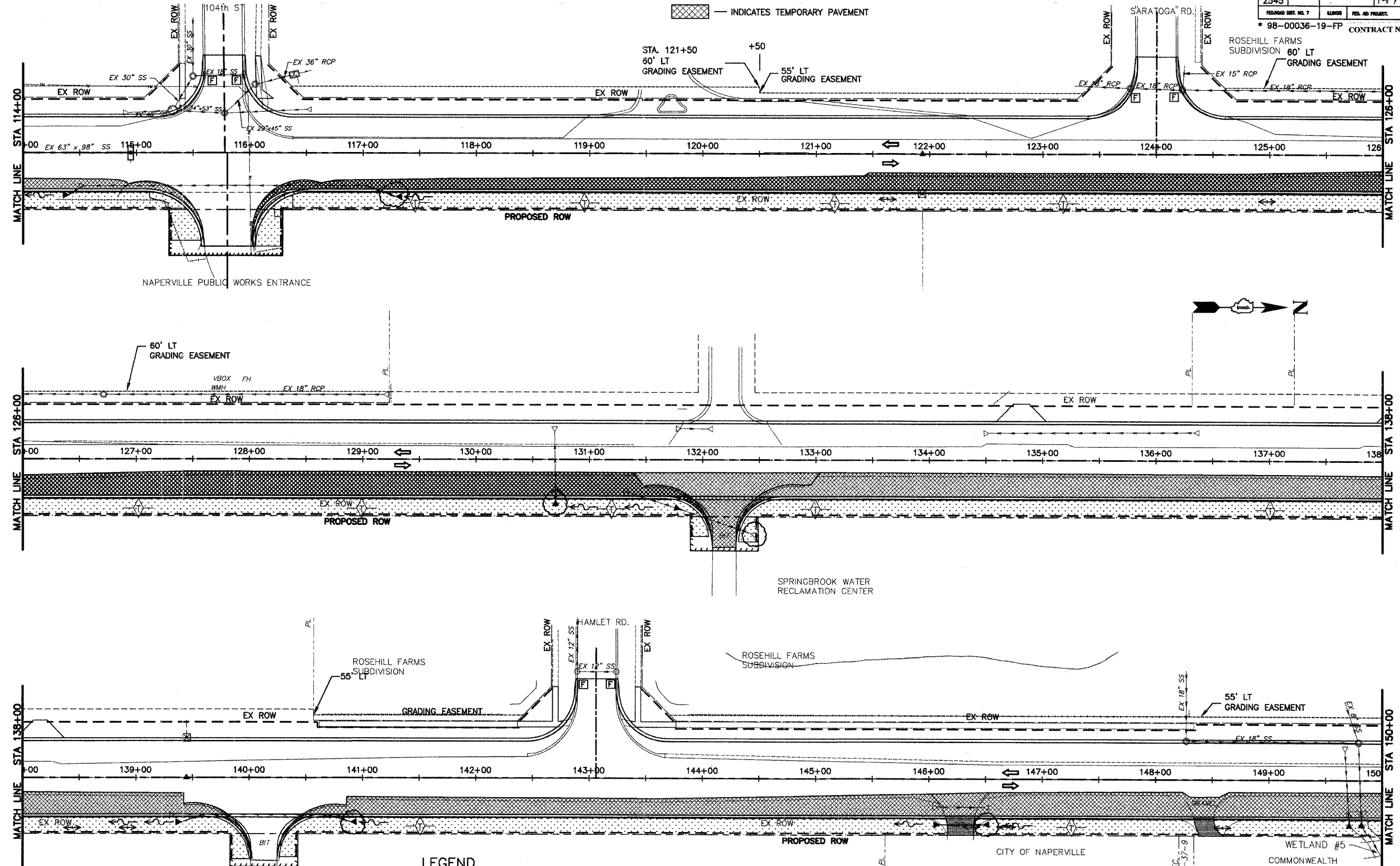


ROUTE NO.	SECTION	COUNTY	TECH. SHEETS	SHEET NO.
FAU 2545	*	WILL	147	66
FED. AID DIST. NO. 7		ALIBOR	FED. AID PROJECT	
* 98-00036-19-FP		CONTRACT NO. 83896		



INDICATES TEMPORARY PAVEMENT

LEGEND

- INLET & PIPE PROTECTION (TYPICAL)
- TEMPORARY EROSION CONTROL SEEDING & MULCH METHOD 2
- AGGREGATE TEMPORARY ACCESS
- DRN. STRUCTURE INLET FILTER
- TEMPORARY DITCH CHECK
- PERIMETER EROSION BARRIER (SILT FILTER FENCE)
- TEMPORARY FENCE

NO.	DATE	REVISION	BY

WILL COUNTY DEPARTMENT OF HIGHWAYS
 PLAINFIELD-NAPERVILLE ROAD (C.H. 14)
 ROADWAY RECONSTRUCTION
 TEMPORARY EROSION CONTROL - STAGE 1
 STA 114+00 TO 150+00

McDonough Associates Inc.
 Engineers/Architects

DESIGNED BY: JTF
 CHECKED BY: NJL
 DRAWN BY: JTF

SCALE:
 1" = 40'

P3
 DRAWING ID: G:\20030023 - Plainfield-Naperville Road\dwg\TEC14STG1.dwg
 PLOT DATE: 07/08/05 - 08:06