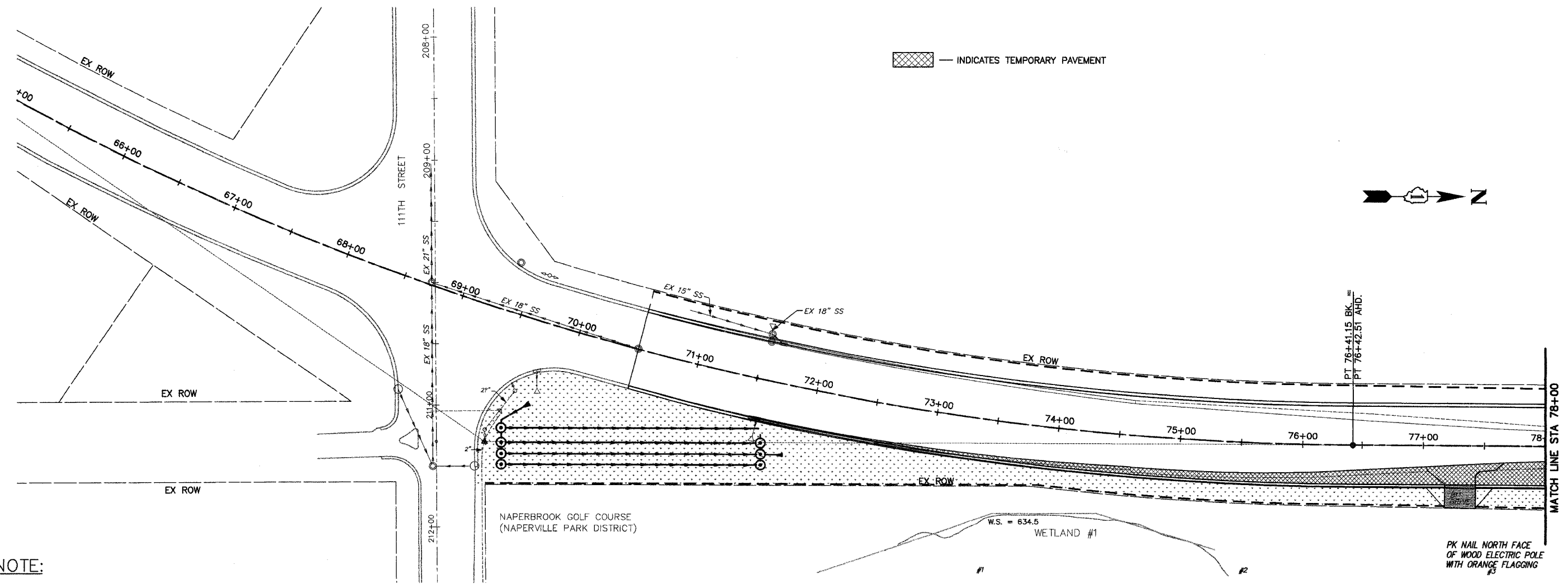


ROUTE NO.	SUBSECTION	COUNTY	TOTAL SHEETS	SHEET NO.
FAU 2545	*	WILL	147	64
FEDERAL DIST. NO. 7		BLK. NO.	FED. AID PROJECT.	
* 98-00036-19-FP		CONTRACT NO. 83896		



**NOTE:**  
 QUANTITIES HAVE BEEN ESTIMATED FOR 50% OF THE AREA SHOWN HEREIN FOR TEMPORARY EROSION CONTROL SEEDING WHICH WILL BE USED ONLY AS DIRECTED BY THE ENGINEER IN ACCORDANCE WITH ARTICLE 280.04(f) OF THE STANDARD SPECIFICATIONS AND SPECIAL PROVISIONS INCLUDED HEREIN. THE UNIT PRICES BID FOR ITEMS TEMPORARY EROSION CONTROL SEEDING AND MULCH METHOD 2 SHALL REMAIN CONSTANT THROUGHOUT THE DURATION OF THE CONTRACT REGARDLESS IF THERE IS AN INCREASE OR A DECREASE IN THE QUANTITIES ESTIMATED FOR THESE ITEMS.

**LEGEND**

	INLET & PIPE PROTECTION (TYPICAL)		DRN. STRUCTURE INLET FILTER
	TEMPORARY EROSION CONTROL SEEDING & MULCH METHOD 2		TEMPORARY DITCH CHECK
	AGGREGATE TEMPORARY ACCESS		PERIMETER EROSION BARRIER (SILT FILTER FENCE)
			TEMPORARY FENCE

**NOTE:**  
 TEMPORARY EROSION CONTROL SEEDING SHALL BE PROVIDED BY THE CONTRACTOR IN ACCORDANCE WITH SPECIAL PROVISIONS.

P1  
 DRAWING ID: C:\20030023 - Plainfield-Naperville Road\dwg\TEC14STG1.dwg  
 PLOT DATE: 07/08/05 - 08:06

NO.	DATE	REVISION	BY

WILL COUNTY DEPARTMENT OF HIGHWAYS  
 PLAINFIELD-NAPERVILLE ROAD (C.H. 14)  
 ROADWAY RECONSTRUCTION  
 TEMPORARY EROSION CONTROL - STAGE 1  
 STA 69+66 TO STA 78+00

McDonough Associates Inc.  
 Engineers/Architects

DESIGNED BY: JTF  
 CHECKED BY: NJL  
 DRAWN BY: JTF

SCALE:  
 1" = 40'