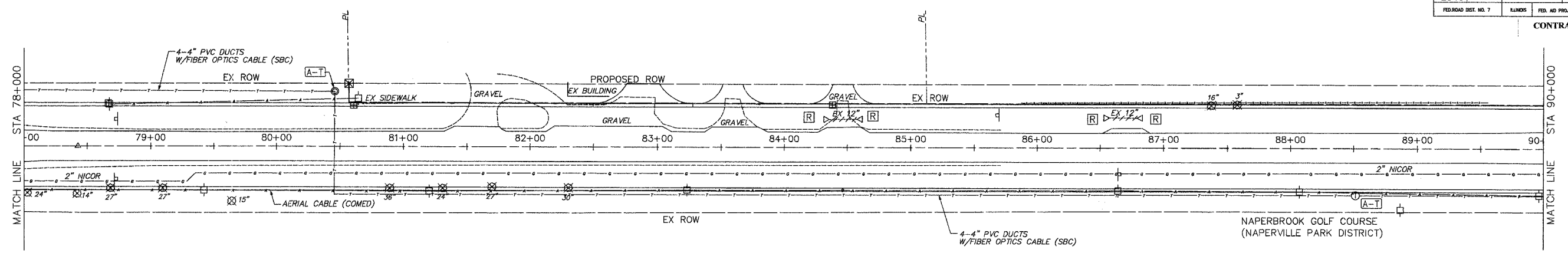


\* 98-00036-19-FP

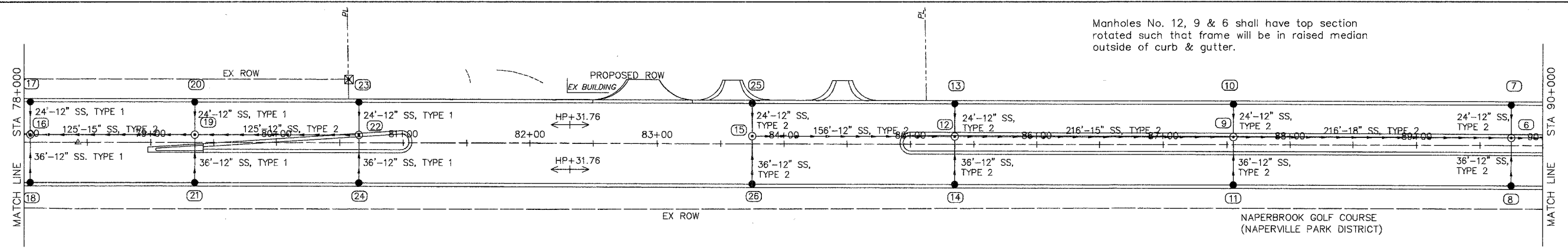
ROUTE NO.	SECTION	COUNTY	TOTAL SHEETS	SHEET NO.
FAU 2545	*	WILL	147	51
FED. ROAD DIST. NO. 7		KILGORE FED. AID PROJECT		

CONTRACT NO. 83896



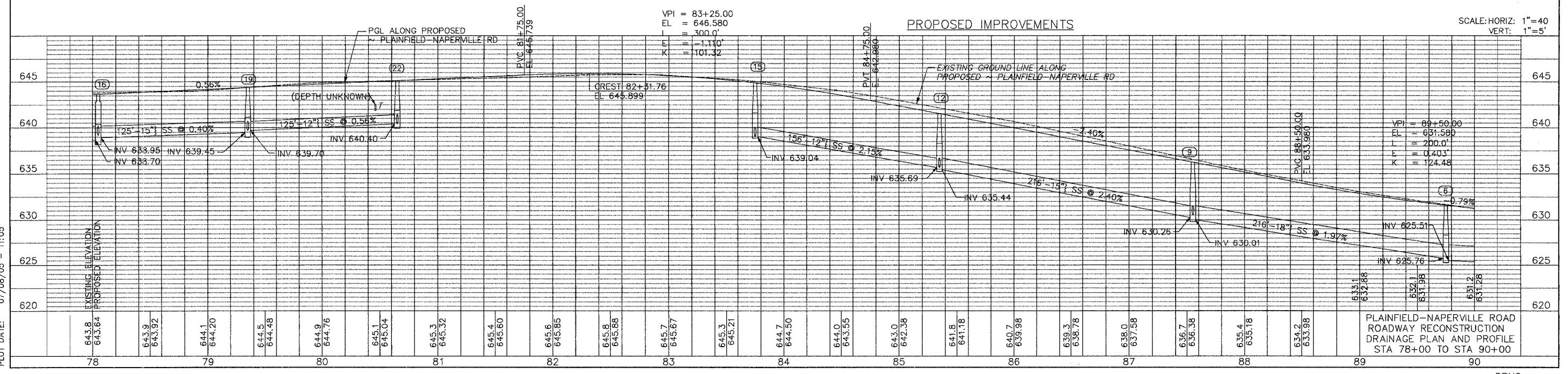
EXISTING CONDITIONS

Manholes No. 12, 9 & 6 shall have top section rotated such that frame will be in raised median outside of curb & gutter.



PROPOSED IMPROVEMENTS

SCALE: HORIZ: 1"=40'  
VERT: 1"=5'



DRAWING ID: G:\20030023 - Plainfield-Naperville Road\dwg\DRN02.dwg  
PLOT DATE: 07/08/05 - 11:05

PLAINFIELD-NAPERVILLE ROAD  
ROADWAY RECONSTRUCTION  
DRAINAGE PLAN AND PROFILE  
STA 78+00 TO STA 90+00

DRN2