

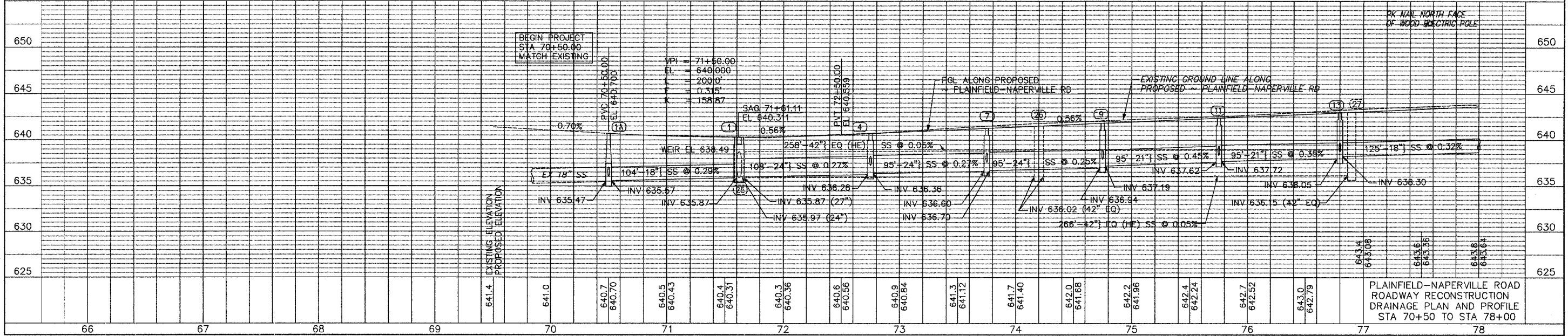
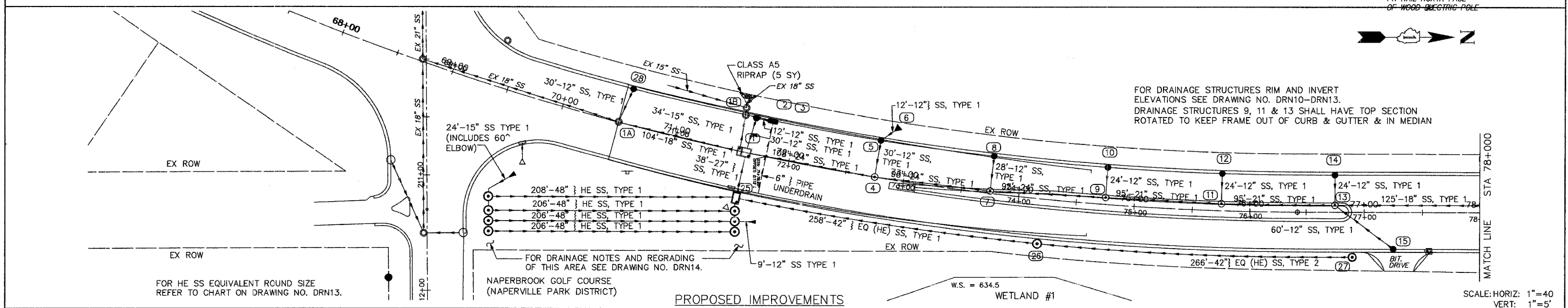
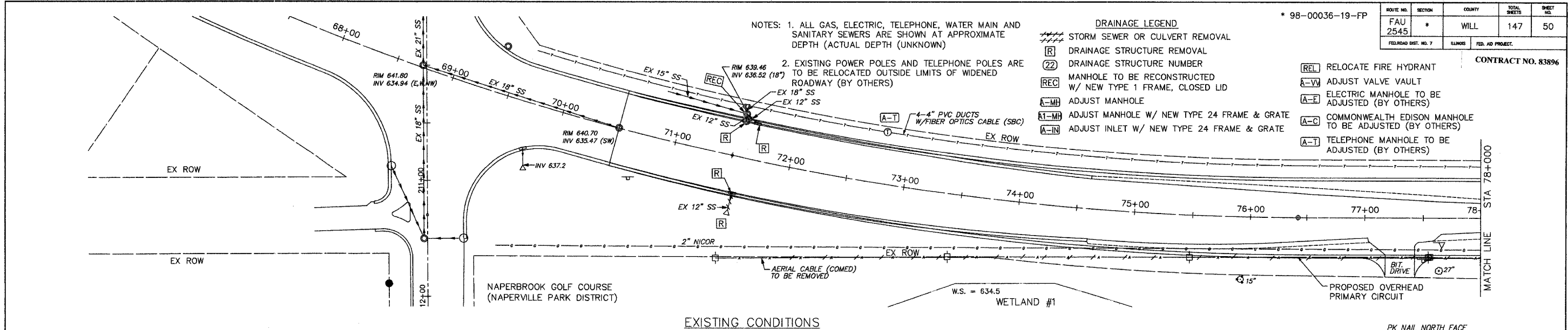
| | | | | |
|-----------------------|----------|------------------|--------------|-----------|
| ROUTE NO. | SECTION | COUNTY | TOTAL SHEETS | SHEET NO. |
| FAU 2545 | * | WILL | 147 | 50 |
| FED. ROAD DIST. NO. 7 | ILLINOIS | FED. AID PROJECT | | |

CONTRACT NO. 83896

* 98-00036-19-FP

- NOTES: 1. ALL GAS, ELECTRIC, TELEPHONE, WATER MAIN AND SANITARY SEWERS ARE SHOWN AT APPROXIMATE DEPTH (ACTUAL DEPTH (UNKNOWN))
2. EXISTING POWER POLES AND TELEPHONE POLES ARE TO BE RELOCATED OUTSIDE LIMITS OF WIDENED ROADWAY (BY OTHERS)

- DRAINAGE LEGEND**
- STORM SEWER OR CULVERT REMOVAL
 - DRAINAGE STRUCTURE REMOVAL
 - DRAINAGE STRUCTURE NUMBER
 - MANHOLE TO BE RECONSTRUCTED W/ NEW TYPE 1 FRAME, CLOSED LID
 - ADJUST MANHOLE
 - ADJUST MANHOLE W/ NEW TYPE 24 FRAME & GRATE
 - ADJUST INLET W/ NEW TYPE 24 FRAME & GRATE
 - RELOCATE FIRE HYDRANT
 - ADJUST VALVE VAULT
 - ELECTRIC MANHOLE TO BE ADJUSTED (BY OTHERS)
 - COMMONWEALTH EDISON MANHOLE TO BE ADJUSTED (BY OTHERS)
 - TELEPHONE MANHOLE TO BE ADJUSTED (BY OTHERS)



DRAWING ID: C:\20030023 - Plainfield-Naperville Road\dwg\DRN01.dwg PLOT DATE: 07/08/05 - 11:04