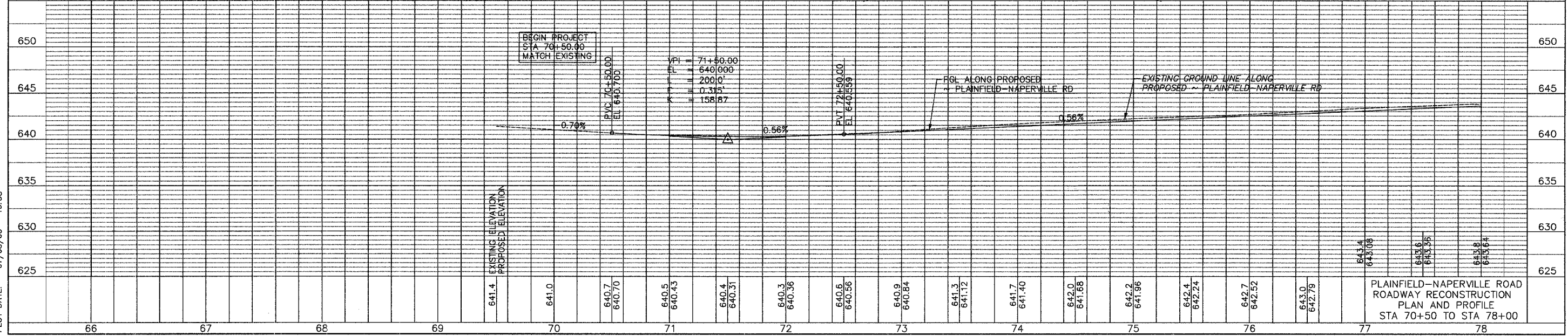
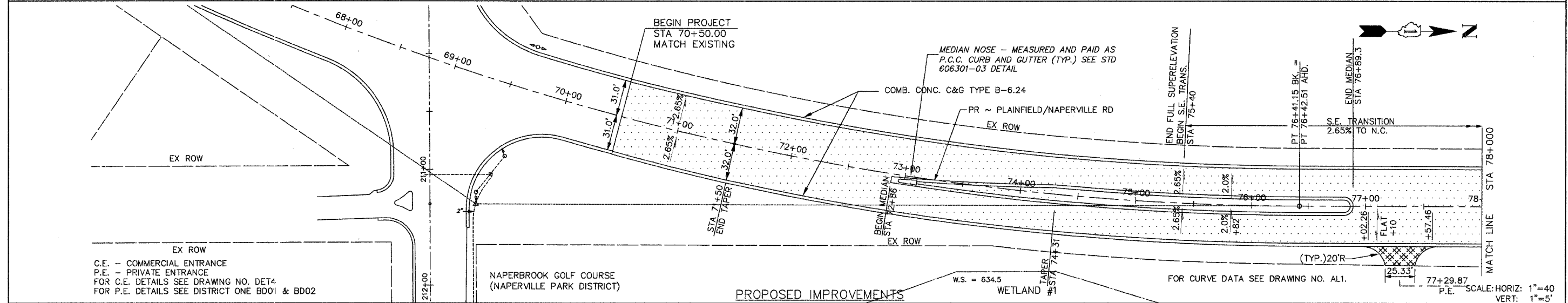
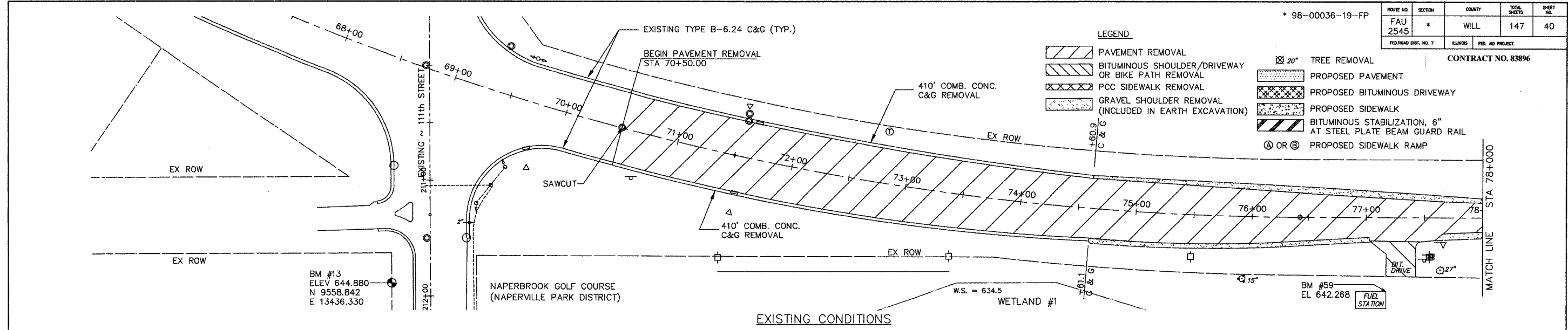


ROUTE NO.	SECTION	COUNTY	TOTAL SHEETS	SHEET NO.
FAU 2545	*	WILL	147	40
FED. ROAD DIST. NO. 7		BLKNO.	FID. AD PROJECT.	

CONTRACT NO. 83896

\* 98-00036-19-FP

- LEGEND**
- PAVEMENT REMOVAL
  - BITUMINOUS SHOULDER/DRIVEWAY OR BIKE PATH REMOVAL
  - PCC SIDEWALK REMOVAL
  - GRAVEL SHOULDER REMOVAL (INCLUDED IN EARTH EXCAVATION)
  - 20' TREE REMOVAL
  - PROPOSED PAVEMENT
  - PROPOSED BITUMINOUS DRIVEWAY
  - PROPOSED SIDEWALK
  - BITUMINOUS STABILIZATION, 6" AT STEEL PLATE BEAM GUARD RAIL
  - PROPOSED SIDEWALK RAMP



DRAWING ID: G:\20030023 - Plainfield-Naperville Road\dwg\PLANPRO1.dwg  
PLOT DATE: 07/08/05 - 10:38

PLAINFIELD-NAPERVILLE ROAD  
ROADWAY RECONSTRUCTION  
PLAN AND PROFILE  
STA 70+50 TO STA 78+00