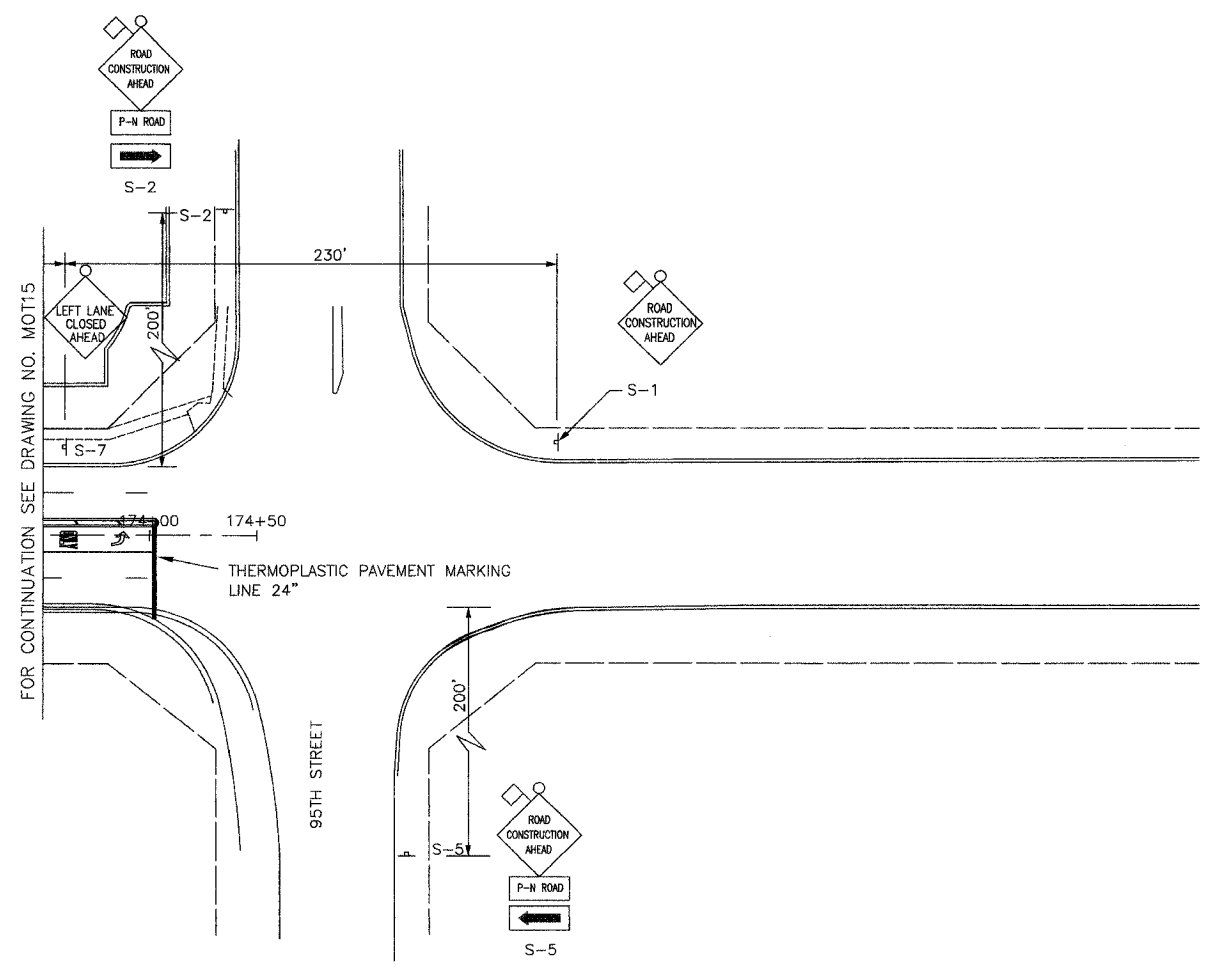


ROUTE NO.	SECTION	COUNTY	TOTAL SHEETS	SHEET NO.
FAU 2545	*	WILL	147	39
FED. ROAD DIST. NO. 7		ALINDS	FED. AID PROJECT.	
* 98-00036-19-FP		CONTRACT NO. 83896		



- LEGEND**
- ⊙ PLASTIC DRUMS W/STEADY BURN LIGHTS ⊙ 25FT SPACING
  - I TYPE I OR TYPE II BARRICADES W/STEADY BURN LIGHTS  
⊙ 50' C-C ON TANGENTS; 25' C-C ON TAPERS
  - III TYPE III BARRICADES W/STEADY BURN LIGHTS
  - TRAFFIC LANE
  - ↑ TRAFFIC SIGN
  - FLASHING ARROWBOARD
  - ▨ WORK AREA

NO.	DATE	REVISION	BY

WILL COUNTY DEPARTMENT OF HIGHWAYS

PLAINFIELD-NAPERVILLE ROAD (C.H. 14)

ROADWAY RECONSTRUCTION

M.O.T. STAGE 3

STA 173+50 TO 95TH STREET

McDonough Associates Inc.  
Engineers/Architects

DESIGNED BY: MC  
CHECKED BY: N.J.L  
DRAWN BY: J.T.F

SCALE:  
1" = 40'

P4  
DRAWING ID: G:\20030023 - Plainfield-Naperville Road\dwg\MOT15 1-4.dwg  
PLOT DATE: 07/08/05 - 10:33