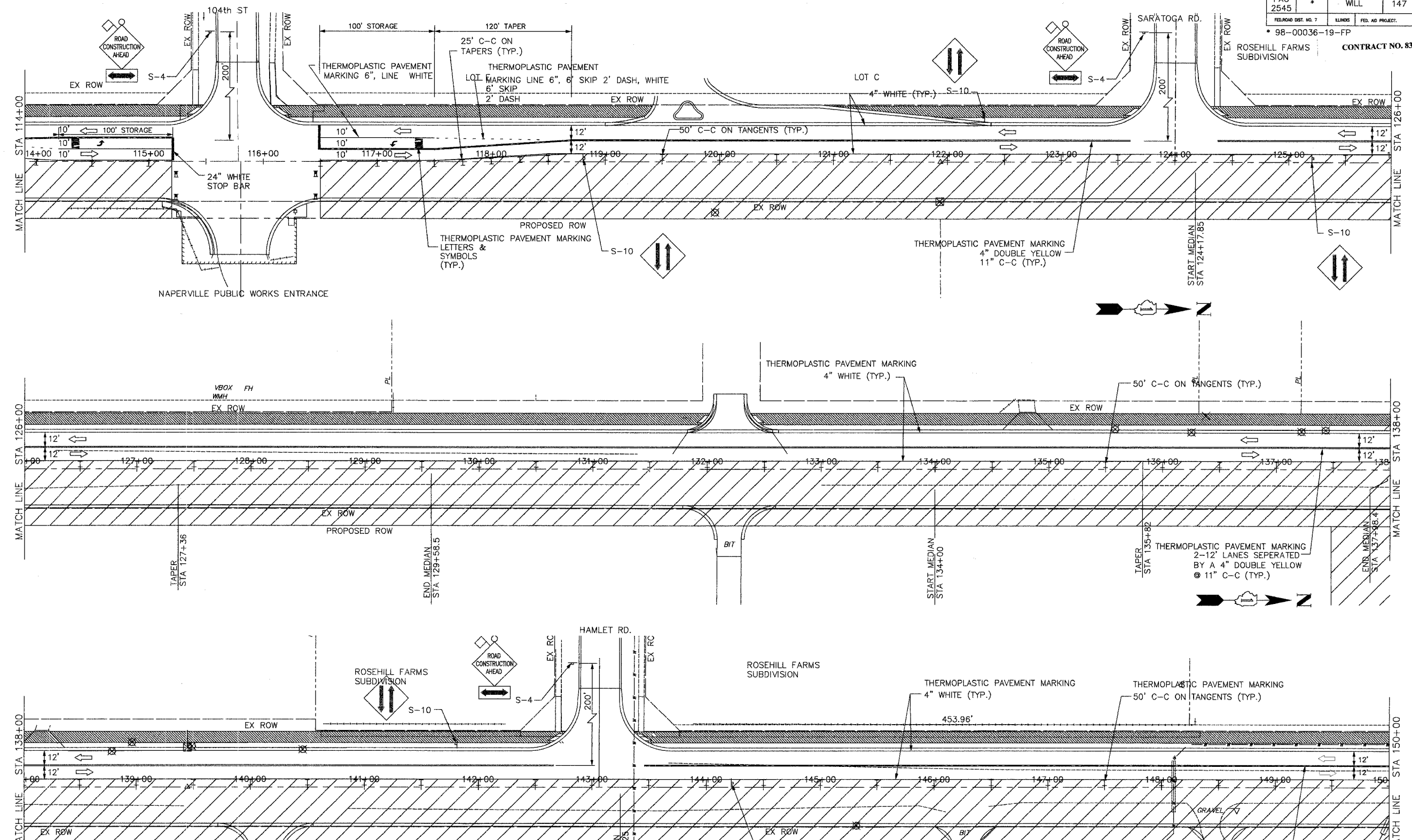


ROUTE NO.	SECTION	COUNTY	TOTAL SHEETS	SHEET NO.
FAU 2545	*	WILL	147	37
FED. ROAD DIST. NO. 7	ALMOS	FED. AID PROJECT:	* 98-00036-19-FP	

CONTRACT NO. 83896  
ROSEHILL FARMS SUBDIVISION



LEGEND

- PLASTIC DRUMS W/STEADY BURN LIGHTS @ 25FT SPACING
- ⊕ TYPE I OR TYPE II BARRICADES W/STEADY BURN LIGHTS @ 50' C-C ON TANGENTS; 25' C-C ON TAPERS
- ⊕ TYPE III BARRICADES W/STEADY BURN LIGHTS
- TRAFFIC LANE
- ⊕ TRAFFIC SIGN
- FLASHING ARROWBOARD
- ▨ WORK AREA

WILL COUNTY DEPARTMENT OF HIGHWAYS  
PLAINFIELD-NAPERVILLE ROAD (C.H. 14)  
ROADWAY RECONSTRUCTION  
M.O.T. STAGE 3  
STA 114+00 TO 150+00

McDonough Associates Inc.  
Engineers/Architects

DESIGNED BY: MC  
CHECKED BY: NUL  
DRAWN BY: JTF

SCALE:  
1" = 40'

P3  
DRAWING ID: G:\20030023 - Plainfield-Naperville Road\dwg\MOT13 1-4.dwg  
PLOT DATE: 07/08/05 - 10:33