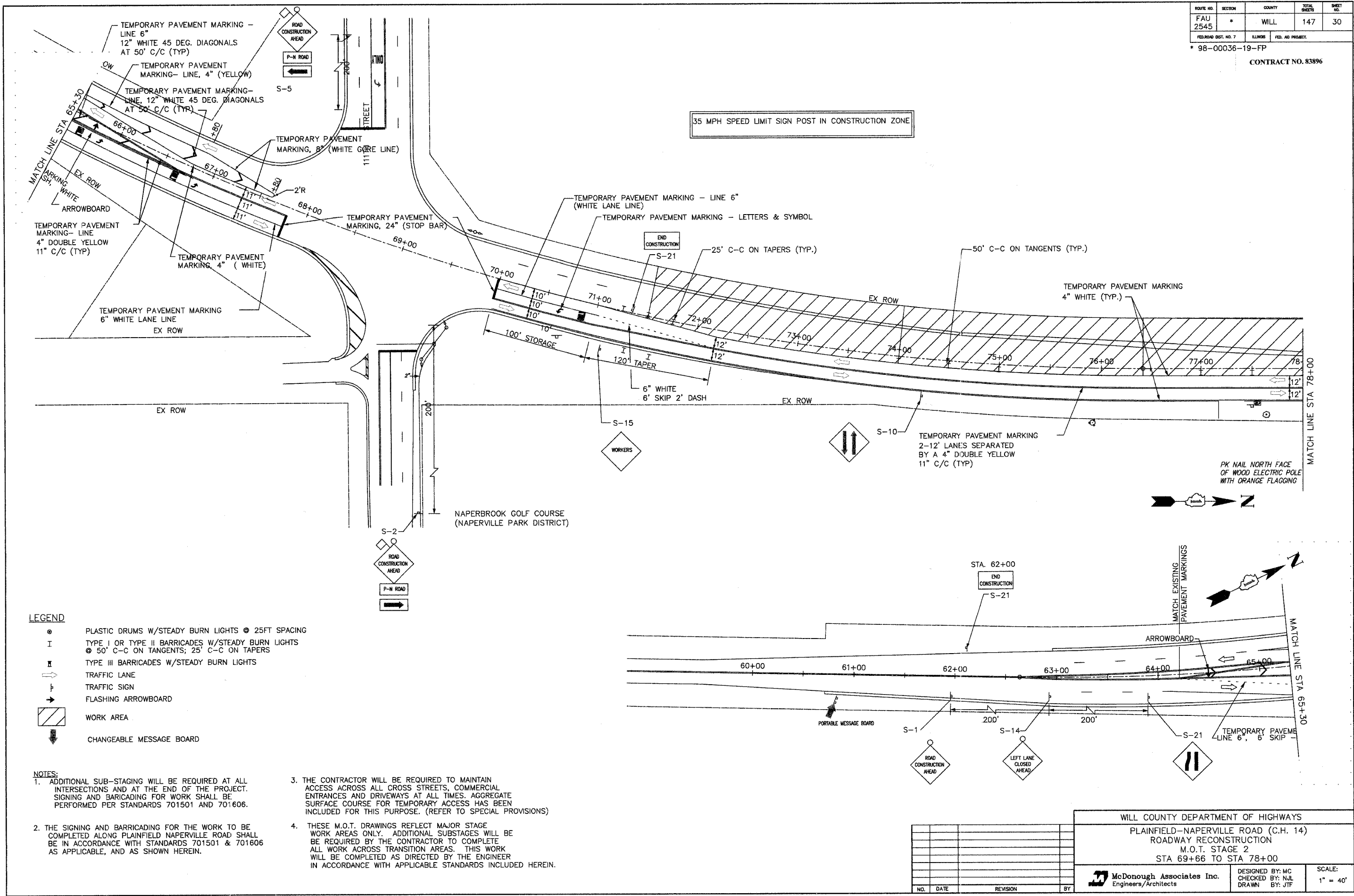


ROUTE NO.	SECTION	COUNTY	TOTAL SHEETS	SHEET NO.
FAU 2545	*	WILL	147	30
FED. ROAD DIST. NO. 7		LLINER	FED. AID PROJECT	
* 98-00036-19-FP				
CONTRACT NO. 83896				



- LEGEND**
- ⊙ PLASTIC DRUMS W/STEADY BURN LIGHTS @ 25FT SPACING
 - I TYPE I OR TYPE II BARRICADES W/STEADY BURN LIGHTS
 - ⊙ 50' C-C ON TANGENTS; 25' C-C ON TAPERS
 - II TYPE III BARRICADES W/STEADY BURN LIGHTS
 - ⇨ TRAFFIC LANE
 - ⇨ TRAFFIC SIGN
 - ⇨ FLASHING ARROWBOARD
 - ▨ WORK AREA
 - ⇨ CHANGEABLE MESSAGE BOARD

- NOTES:**
- ADDITIONAL SUB-STAGING WILL BE REQUIRED AT ALL INTERSECTIONS AND AT THE END OF THE PROJECT. SIGNING AND BARRICADING FOR WORK SHALL BE PERFORMED PER STANDARDS 701501 AND 701606.
 - THE CONTRACTOR WILL BE REQUIRED TO MAINTAIN ACCESS ACROSS ALL CROSS STREETS, COMMERCIAL ENTRANCES AND DRIVEWAYS AT ALL TIMES. AGGREGATE SURFACE COURSE FOR TEMPORARY ACCESS HAS BEEN INCLUDED FOR THIS PURPOSE. (REFER TO SPECIAL PROVISIONS)
 - THESE M.O.T. DRAWINGS REFLECT MAJOR STAGE WORK AREAS ONLY. ADDITIONAL SUBSTAGES WILL BE REQUIRED BY THE CONTRACTOR TO COMPLETE ALL WORK ACROSS TRANSITION AREAS. THIS WORK WILL BE COMPLETED AS DIRECTED BY THE ENGINEER IN ACCORDANCE WITH APPLICABLE STANDARDS INCLUDED HEREIN.

WILL COUNTY DEPARTMENT OF HIGHWAYS			
PLAINFIELD-NAPERVILLE ROAD (C.H. 14)			
ROADWAY RECONSTRUCTION			
M.O.T. STAGE 2			
STA 69+66 TO STA 78+00			
McDonough Associates Inc. Engineers/Architects		DESIGNED BY: MC CHECKED BY: NUL DRAWN BY: JTF	SCALE: 1" = 40'
NO.	DATE	REVISION	BY

P1 DRAWING ID: G:\20030023 - Plainfield-Naperville Road\dwg\MOT2 1-4.dwg
 PLOT DATE: 07/08/05 - 10:33