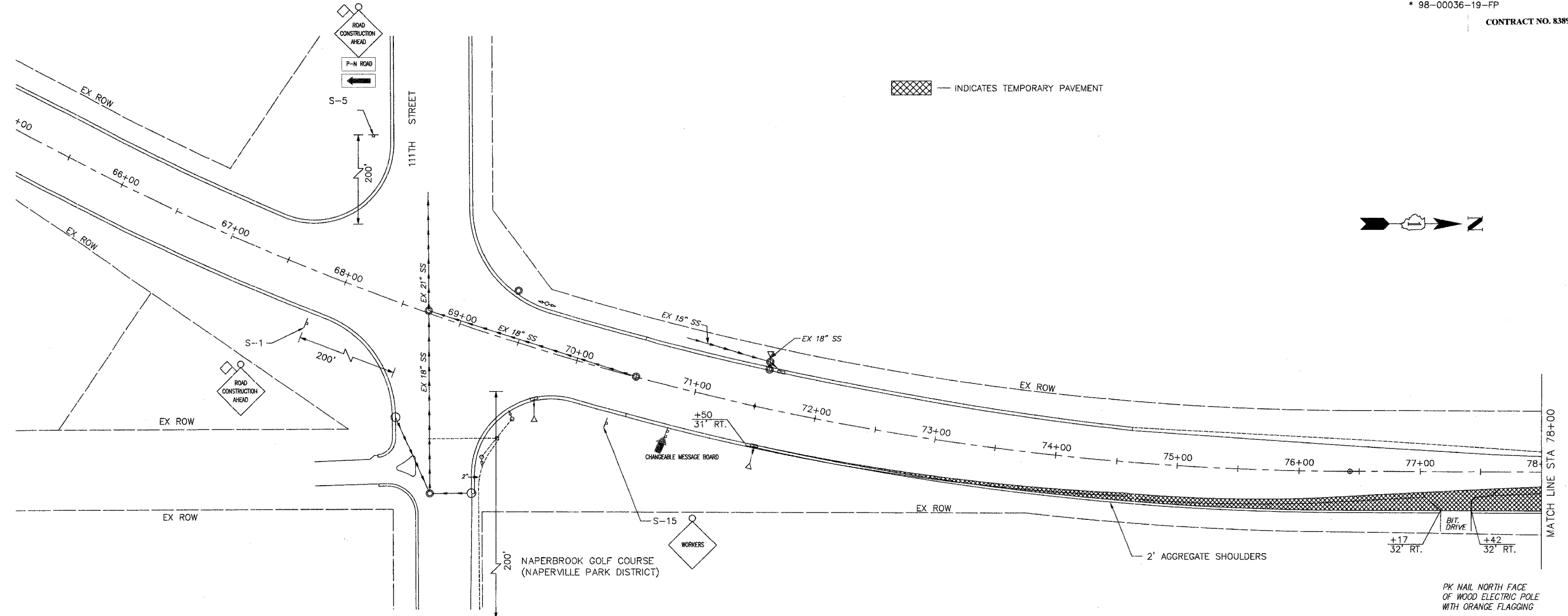
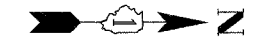


| ROUTE NO.             | SECTION  | COUNTY           | TOTAL SHEETS | SHEET NO. |
|-----------------------|----------|------------------|--------------|-----------|
| FAU 2545              | *        | WILL             | 147          | 26        |
| FED. ROAD DIST. NO. 7 | ILLINOIS | FED. AID PROJECT |              |           |

\* 98-00036-19-FP  
 CONTRACT NO. 83896

INDICATES TEMPORARY PAVEMENT



**NOTES:**

- SIGNING AND BARRICADING FOR TEMPORARY ROADWAY WIDENING SHALL BE IN ACCORDANCE WITH STANDARDS 701328 AND 701501 AS APPLICABLE.
- FOR SIGN LEGEND SEE SHEET NO. MOT2
- TEMPORARY PAINT PAVEMENT MARKINGS SHALL BE USED ON TEMPORARY PAVEMENT FOR STAGE CONSTRUCTION. (PAY FOR AS TEMPORARY PAVEMENT MARKING OF THE SIZE SPECIFIED.)
- PAVEMENT MARKING TAPE SHALL BE USED ON FINAL PAVEMENT FOR STAGE CONSTRUCTION.
- THERMOPLASTIC PAVEMENT MARKINGS SHALL BE USED FOR FINAL PAVEMENT MARKINGS.

| NO. | DATE | REVISION | BY |
|-----|------|----------|----|
|     |      |          |    |
|     |      |          |    |
|     |      |          |    |

WILL COUNTY DEPARTMENT OF HIGHWAYS  
 PLAINFIELD-NAPERVILLE ROAD (C.H. 14)  
 ROADWAY RECONSTRUCTION  
 TEMPORARY WIDENING AND M.O.T. STAGE 1  
 STA 69+66 TO STA 78+00

McDonough Associates Inc.  
 Engineers/Architects

DESIGNED BY: MC  
 CHECKED BY: NJL  
 DRAWN BY: JTF

SCALE:  
 1" = 40'

P1  
 DRAWING ID: G:\20030023 - Plainfield-Naperville Road\dwg\MOT1 1-4.dwg  
 PLOT DATE: 07/08/05 - 10:31